

Supplementary Information

Genomic deletion of malic enzyme 2 confers collateral lethality in pancreatic cancer

Prasenjit Dey^{1,3,11}, Joelle Baddour^{4,11}, Florian Muller², Chia Chin Wu³, Huamin Wang⁵, Wen-Ting Liao¹, Zangdao Lan¹, Alina Chen¹, Tony Gutschner³, Yaan Kang¹⁰, Jason Fleming¹⁰, Nikunj Satani², Di Zhao¹, Abhinav Achreja⁴, Lifeng Yang⁴, Jiyeon Lee⁴, Edward Chang^{3,6}, Giannicola Genovese³, Andrea Viale³, Haoqiang Ying⁷, Giulio Draetta^{3,6,7}, Anirban Maitra^{8,9}, Y. Alan Wang^{1,3*}, Deepak Nagrath^{4*}, Ronald A. DePinho^{1*}

¹Department of Cancer Biology, The University of Texas MD Anderson Cancer Center, Houston, TX 77030, USA

²Department of Cancer Systems Imaging, The University of Texas MD Anderson Cancer Center, Houston, TX 77030, USA

³Department of Genomic Medicine, The University of Texas MD Anderson Cancer Center, Houston, TX 77030, USA

⁴Department of Chemical and Biomolecular Engineering, Department of Bioengineering, Rice University, 6100 Main Street, Houston, TX 77005, USA

⁵Department of Pathology, Division of Pathology/Lab Medicine, The University of Texas MD Anderson Cancer Center, Houston, TX 77030, USA

⁶Institute for Applied Cancer Science, The University of Texas MD Anderson Cancer Center, Houston, TX 77030, USA

⁷Department of Molecular and Cellular Oncology, The University of Texas MD Anderson Cancer Center, Houston, TX 77030, USA

⁸Department of Translational Molecular Pathology, The University of Texas MD Anderson Cancer Center, Houston, TX 77030, USA

⁹Sheikh Ahmed Bin Zayed Al Nahyan Center for Pancreatic Cancer Research, The University of Texas MD Anderson Cancer Center, Houston, TX 77030, USA

¹⁰Department of Surgical Oncology, Division of Surgery, The University of Texas MD Anderson Cancer Center, Houston, TX 77030, USA

¹¹These authors contributed equally

*Correspondance to:

Ronald DePinho, M.D., The University of Texas MD Anderson Cancer Center, 1515 Holcombe Boulevard, Houston, TX 77030. Phone: 713-792-7928; Fax: 713-794-4005; E-

mail: rdepinho@mdanderson.org; Y. Alan Wang, Email: yalanwang@mdanderson.org;

Deepak Nagrath, Email: deepak.nagrath@rice.edu

Supplementary Contents

Supplementary Figure 1: Un-cropped immunoblot scans for **Fig 2b**.

Supplementary Figure 2: Un-cropped immunoblot scans for **Fig 3f**.

Supplementary Figure 3: Un-cropped immunoblot scans for **Fig 4a**.

Supplementary Figure 4: Un-cropped immunoblot scans for **Fig 4b**.

Supplementary Figure 5: Un-cropped immunoblot scans for **Fig 4c**.

Supplementary Figure 6: Un-cropped immunoblot scans for **Fig 4d**.

Supplementary Figure 7: Un-cropped immunoblot scans for **Fig 4f**.

Supplementary Figure 8: Un-cropped immunoblot scans for **Fig 4g**.

Supplementary Figure 9: Un-cropped immunoblot scans for **Fig 4i**.

Supplementary Figure 10: Un-cropped immunoblot scans for **Extended Fig 2c**.

Supplementary Figure 11: Un-cropped immunoblot scans for **Extended Fig. 3a**

Supplementary Figure 12: Un-cropped immunoblot scans for **Extended Fig. 3b**

Supplementary Figure 13: Un-cropped immunoblot scans for **Extended Fig. 3c**

Supplementary Figure 14: Un-cropped immunoblot scans for **Extended Fig. 3d**

Supplementary Figure 15: Un-cropped immunoblot scans for **Extended Fig. 3k**

Supplementary Figure 16: Un-cropped immunoblot scans for **Extended Fig. 5c**

Supplementary Figure 17: Un-cropped immunoblot scans for **Extended Fig. 8b**

Supplementary Figure 18: Un-cropped immunoblot scans for **Extended Fig. 8c**

Supplementary Figure 19: Un-cropped immunoblot scans for **Extended Fig. 8d**

Supplementary Figure 20: Un-cropped immunoblot scans for **Extended Fig. 8e**

Supplementary Figure 21: Un-cropped immunoblot scans for **Extended Fig. 8f**

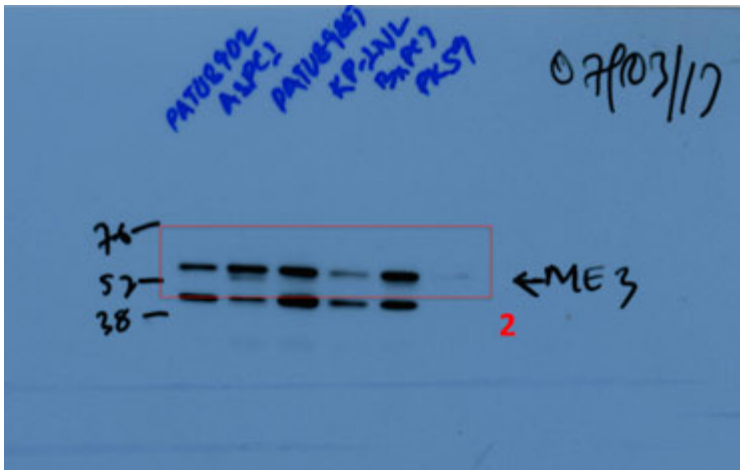
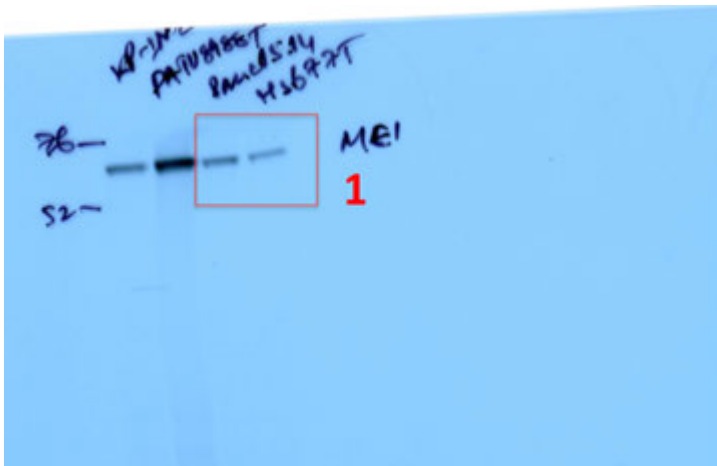
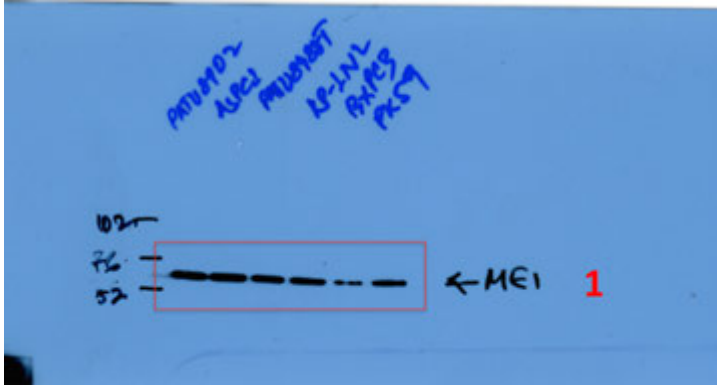
Supplementary Figure 22: Un-cropped immunoblot scans for **Extended Fig. 8g**

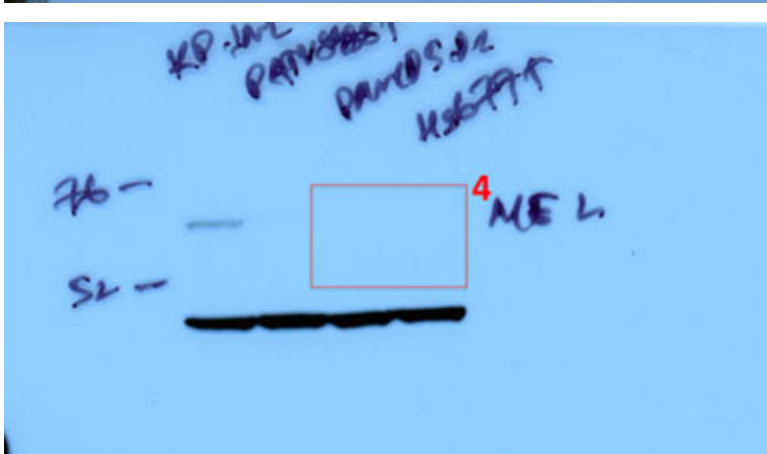
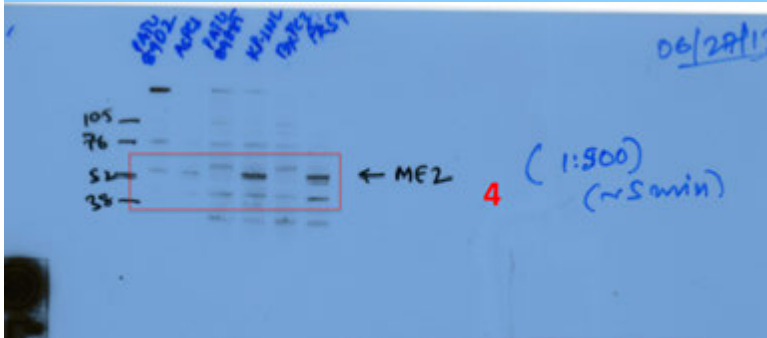
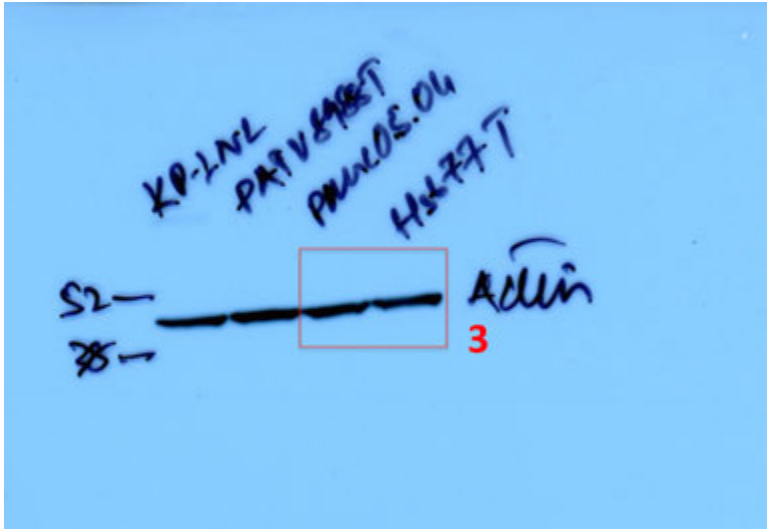
Supplementary Figure 23: Un-cropped immunoblot scans for **Extended Fig. 9c**

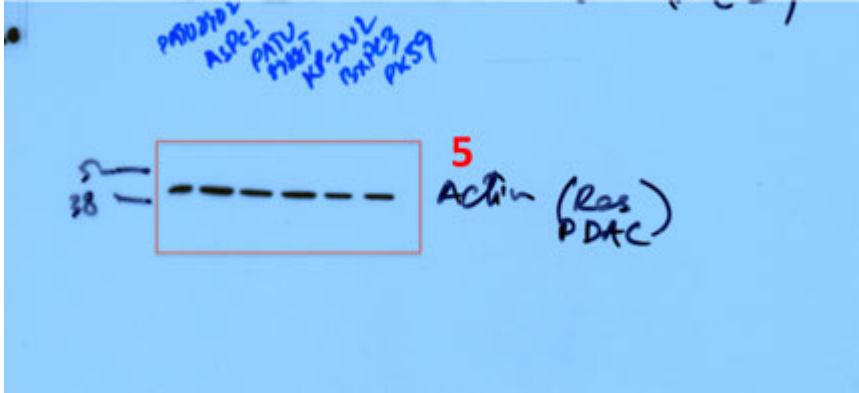
Supplementary Figure 24: Un-cropped immunoblot scans for **Extended Fig. 9d**

Additional references

Supplementary Figure 1

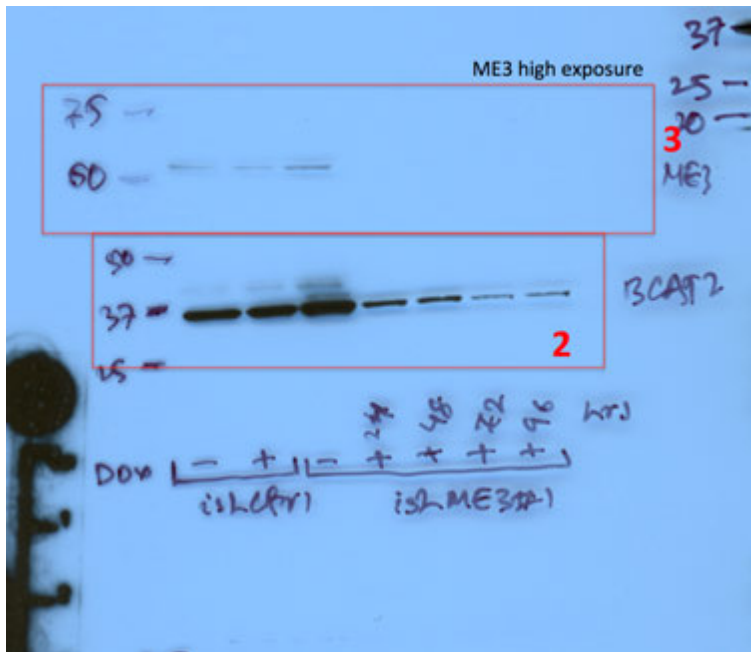






Supplementary Figure 1: Un-cropped immunoblot scans for **Fig 2b**. Raw film scans with red box indicating the area shown in the display. Numbers in red indicates the panel (numbered from top to down) in the figure.

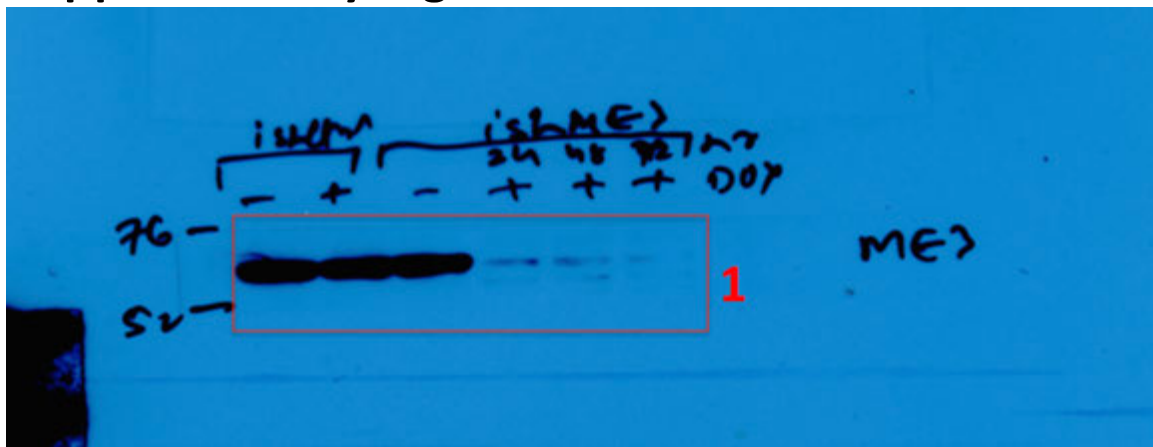
Supplementary Figure 2





Supplementary Figure 2: Un-cropped immunoblot scans for **Fig 3f**. Raw film scans with red box indicating the area shown in the display. Numbers in red indicates the panel (numbered from top to down) in the figure.

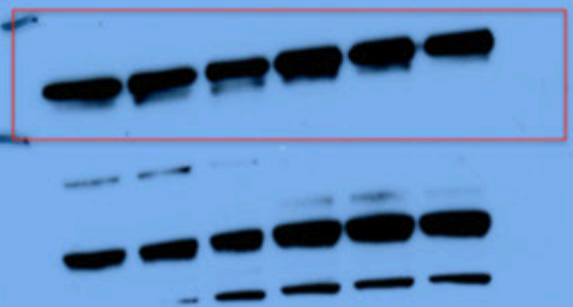
Supplementary Figure 3



DOX
DAYS

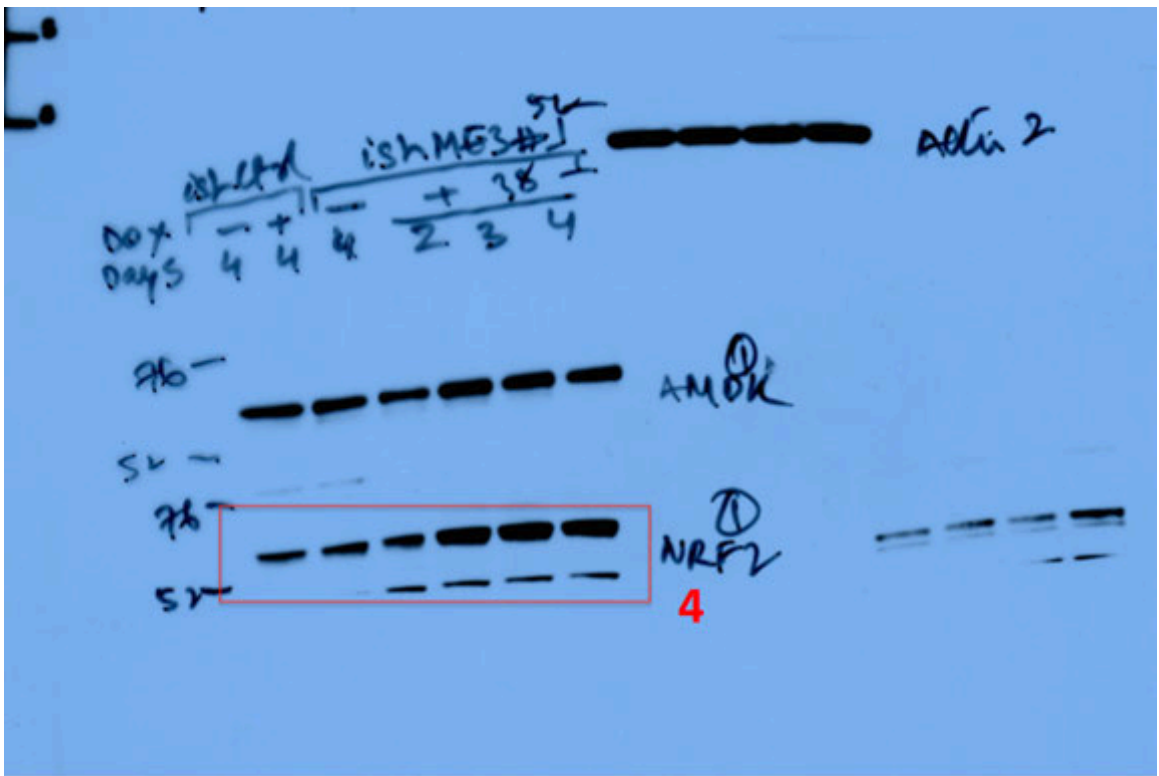
CS2004		ISHMETHI,			
-	+	-	+		
4	4	4	2	3	4

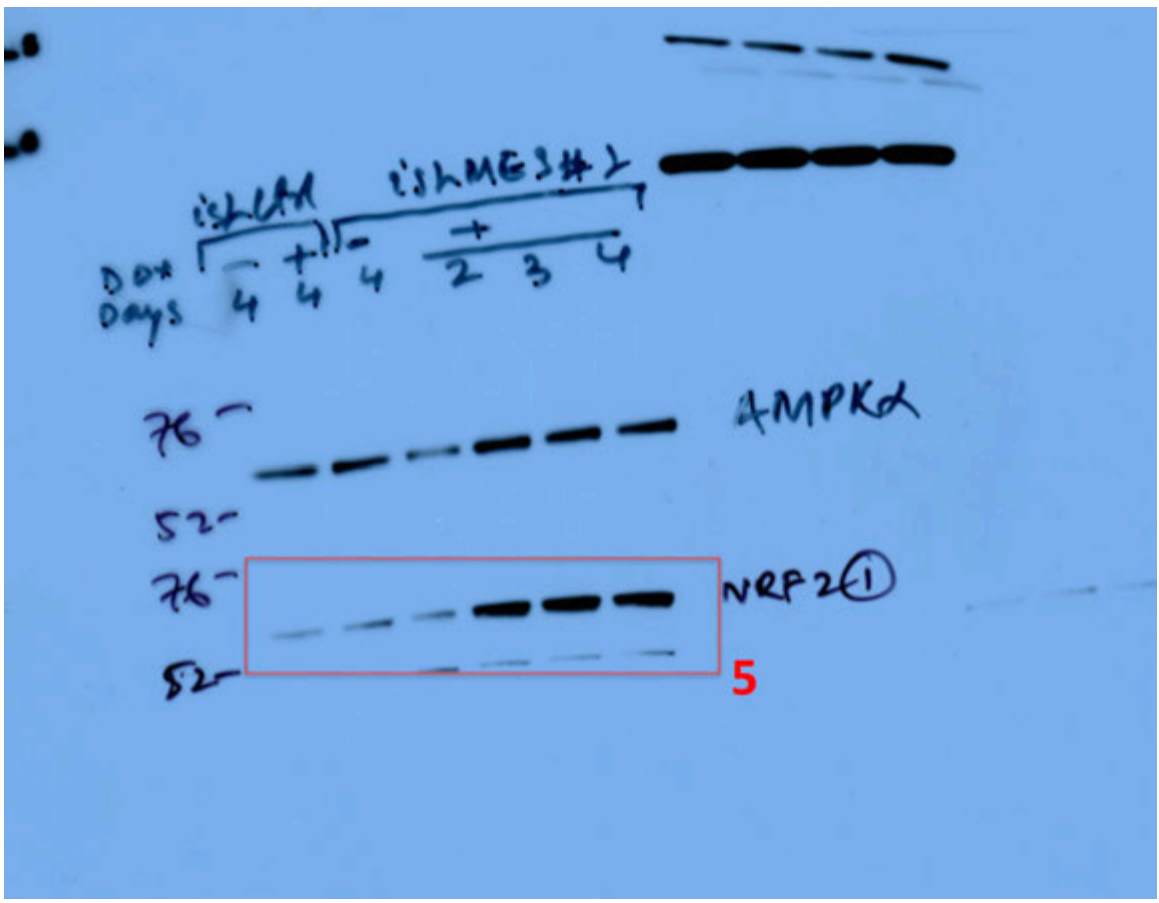
76
52



AMPK α
①

3





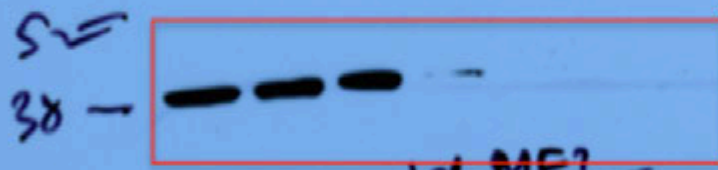
ISH LCM ISH ME2
 - + - +
 24 48 72 hr



①

245 —
 150 —
 125 —

①
 pCCTA



7

①
 BCAT238

ISH LCM ISH ME2
 - + - +
 24 48 72 hr

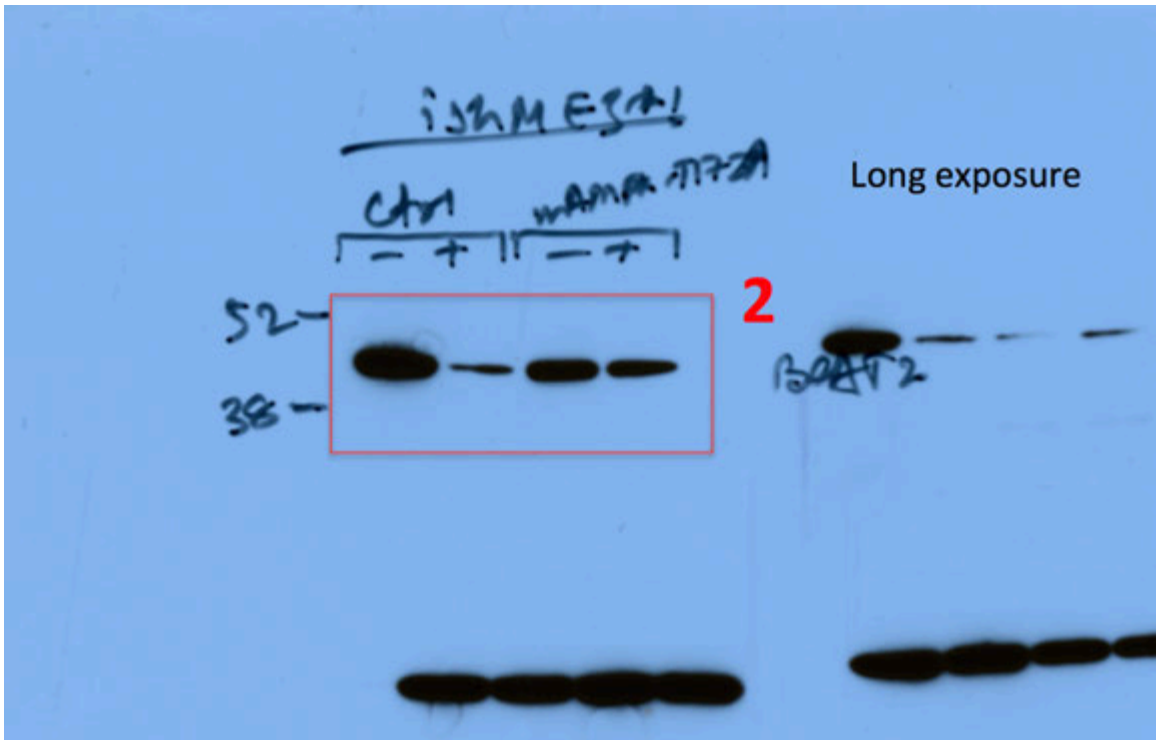
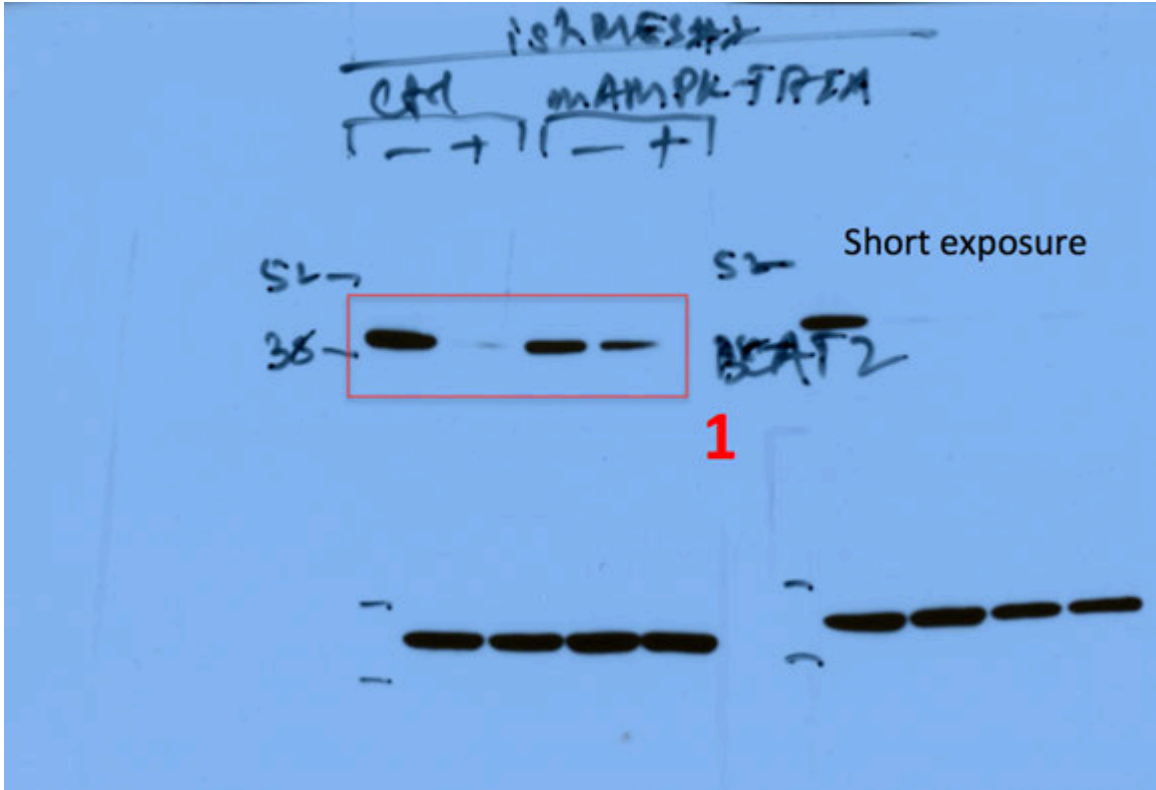


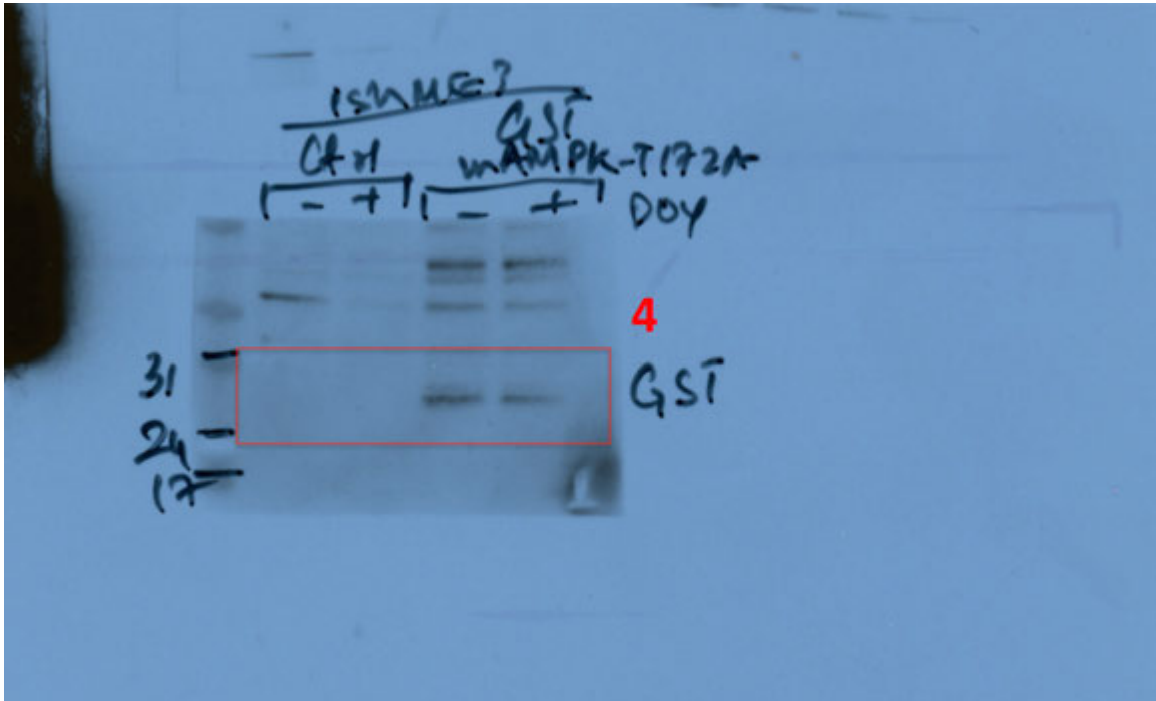
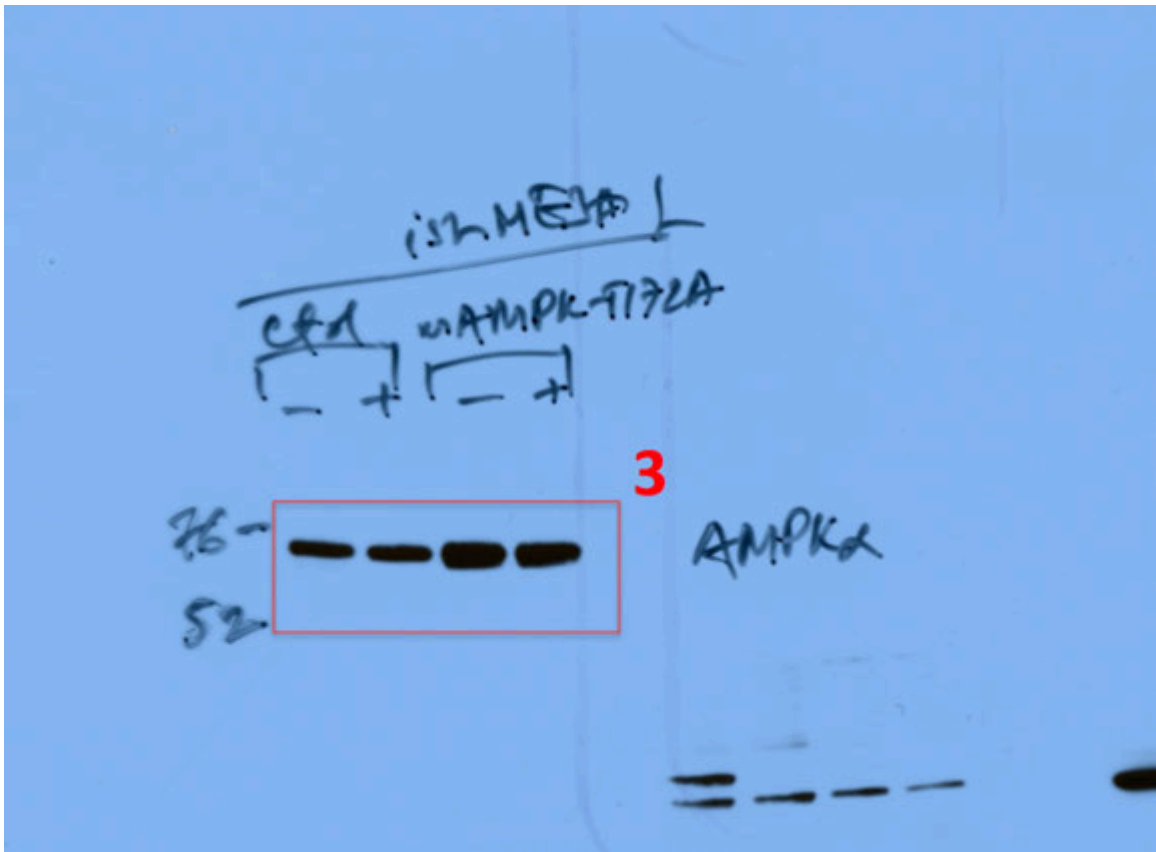
8

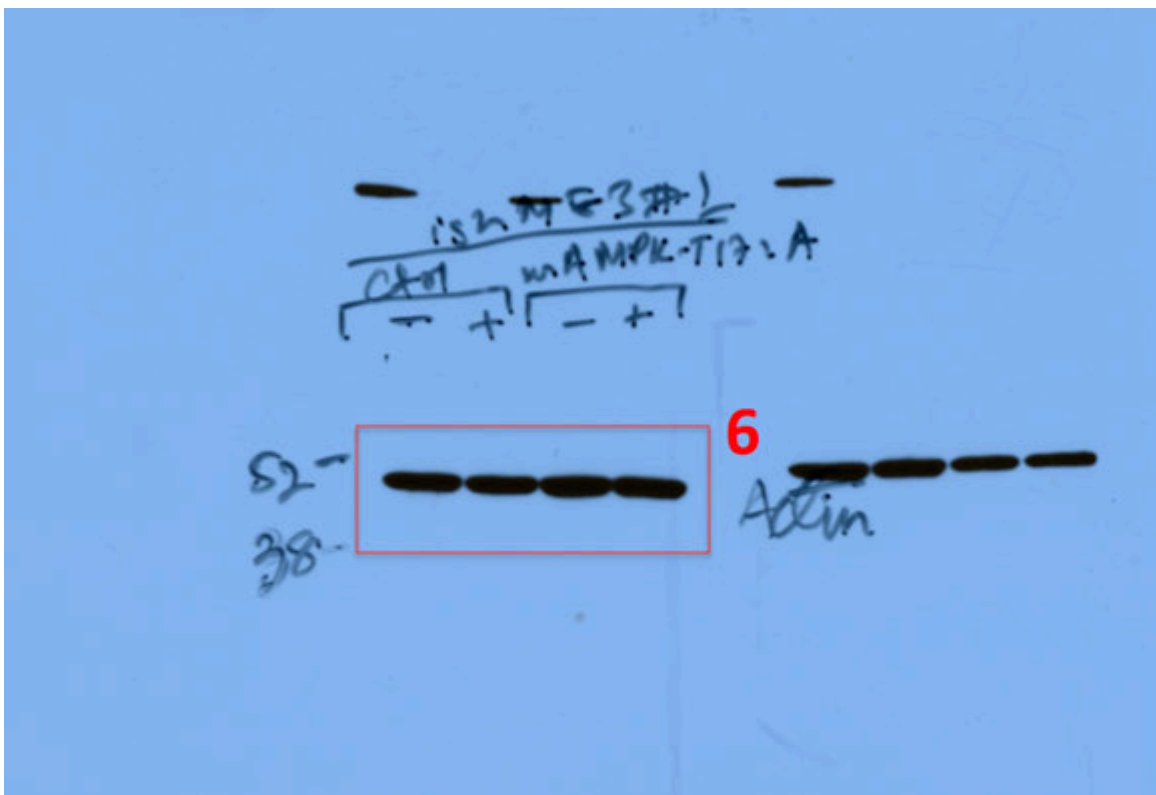
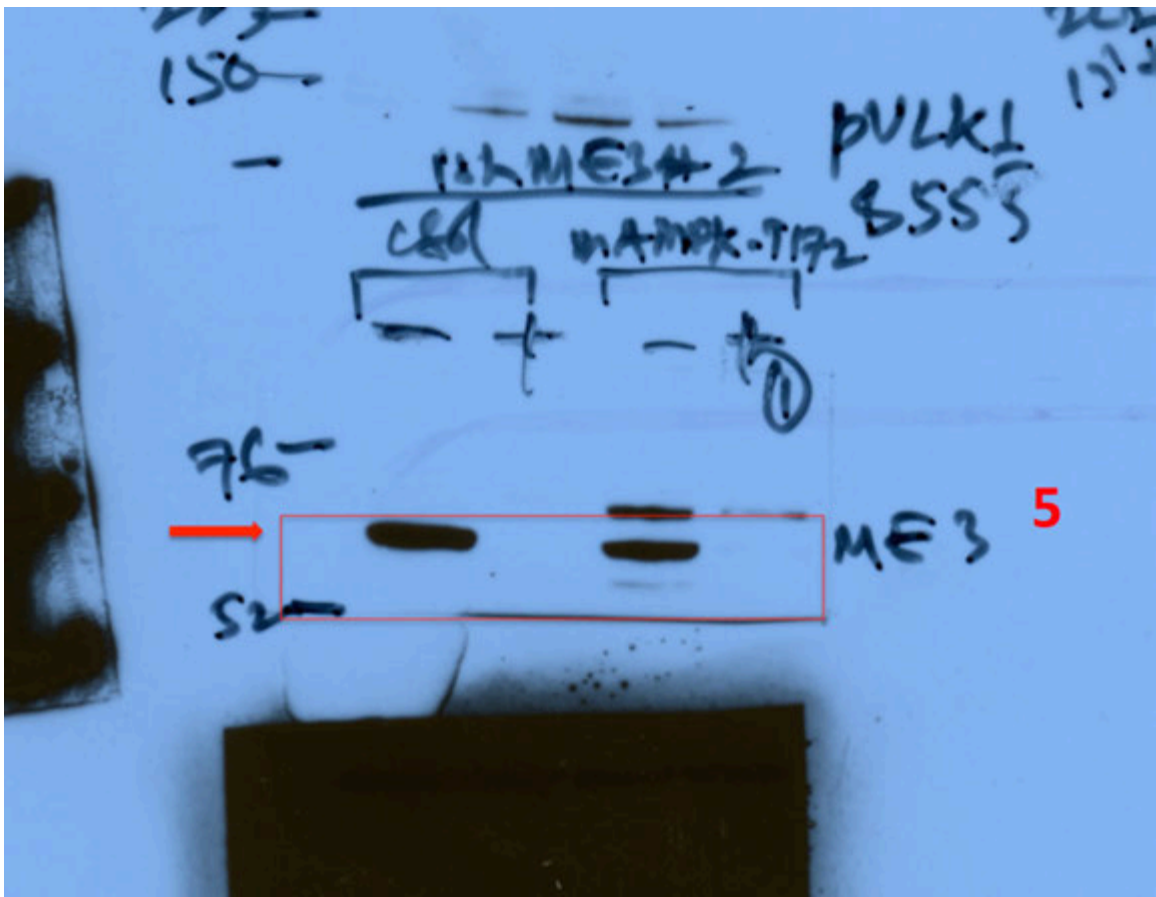
Acln5
 ① 98 —

Supplementary Figure 3: Un-cropped immunoblot scans for **Fig 4a**. Raw film scans with red box indicating the area shown in the display. Numbers in red indicates the panel (numbered from top to down) in the figure.

Supplementary Figure 4

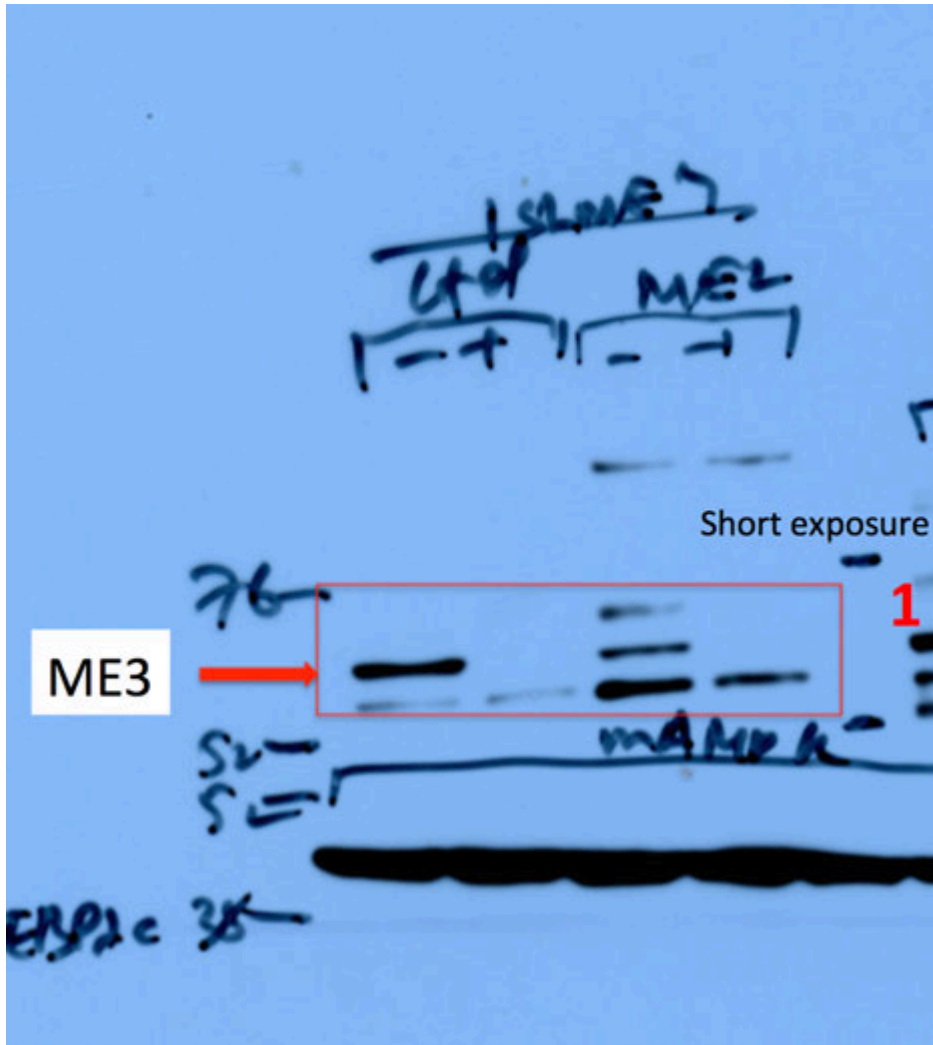


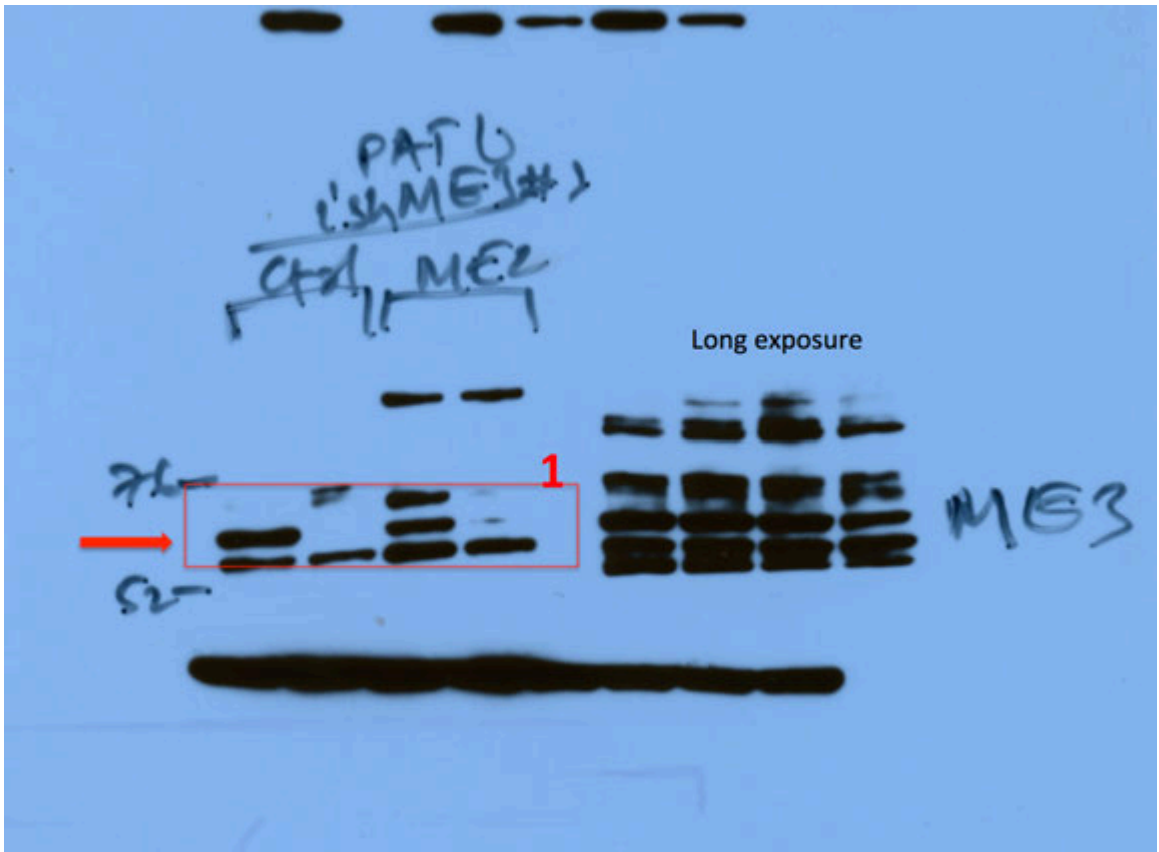


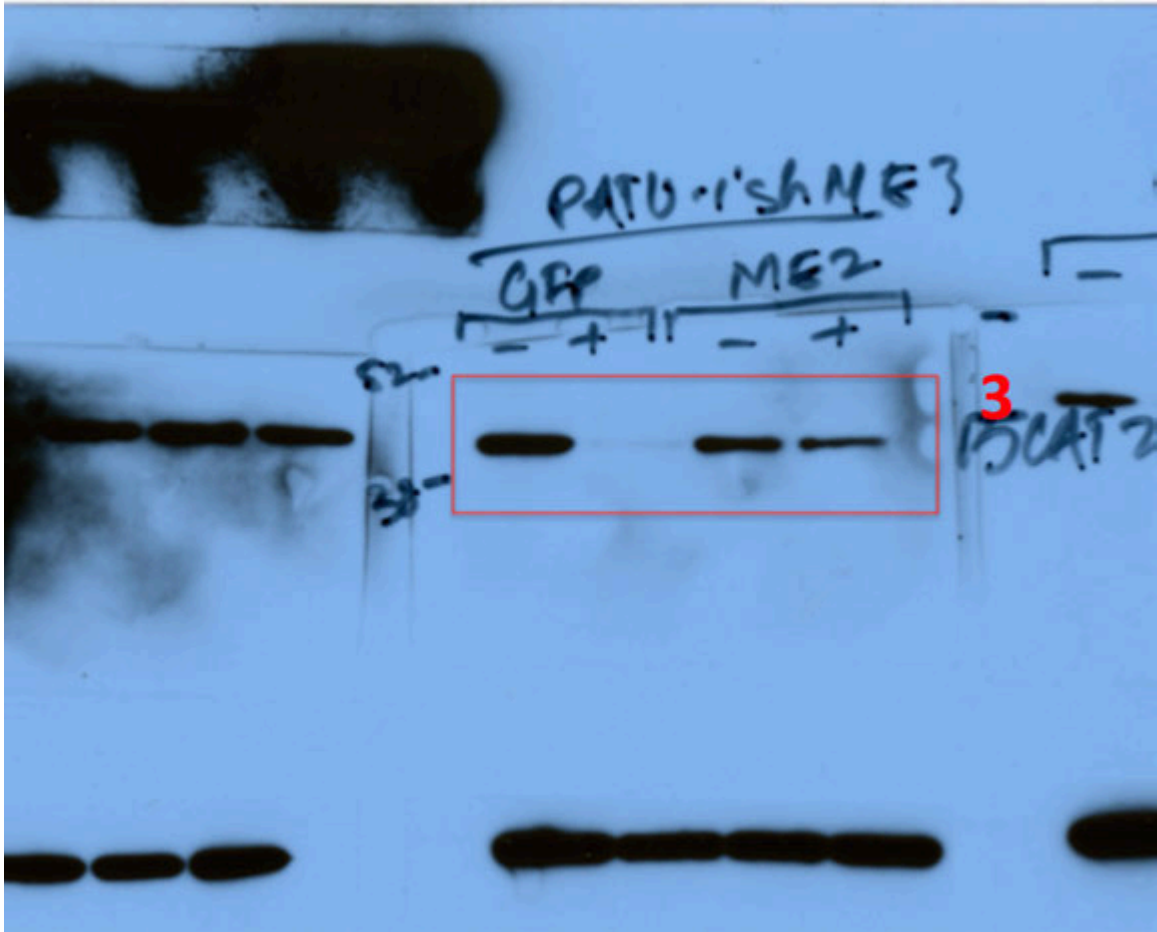


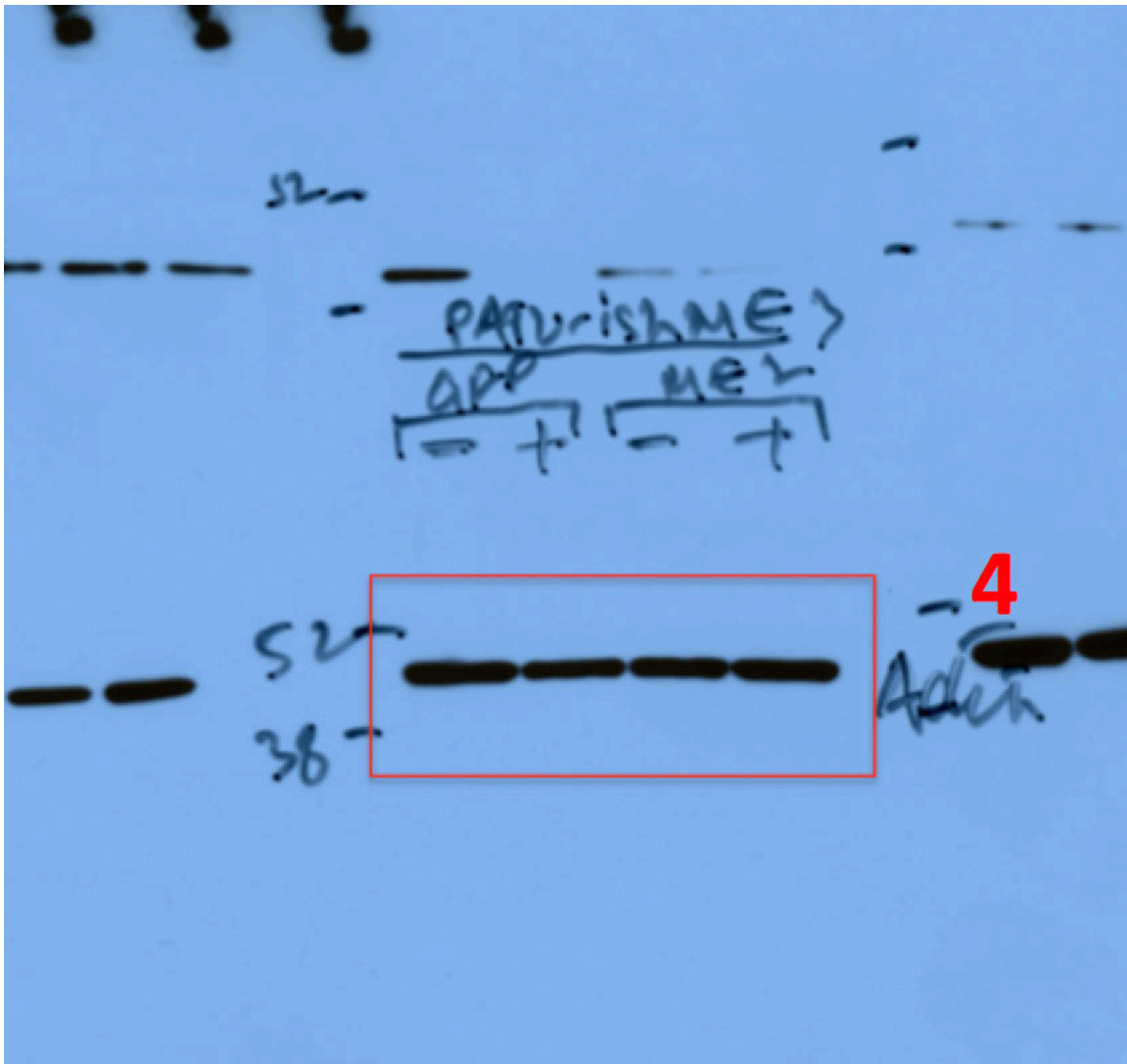
Supplementary Figure 4: Un-cropped immunoblot scans for **Fig 4b**. Raw film scans with red box indicating the area shown in the display. Numbers in red indicates the panel (numbered from top to down) in the figure.

Supplementary Figure 5

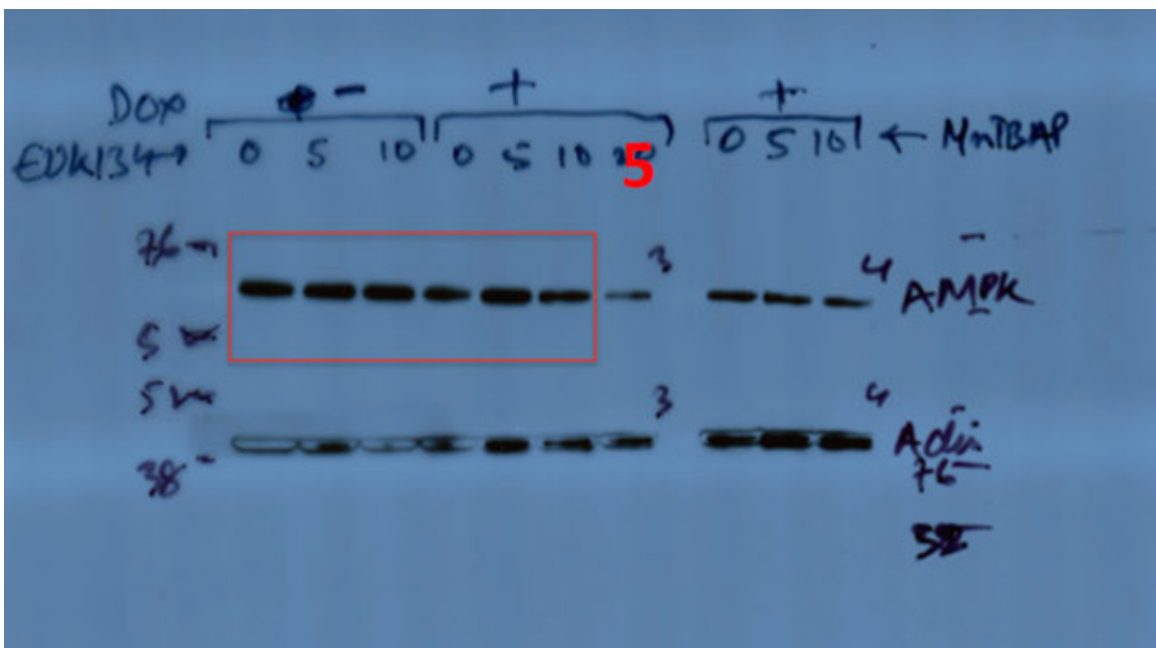
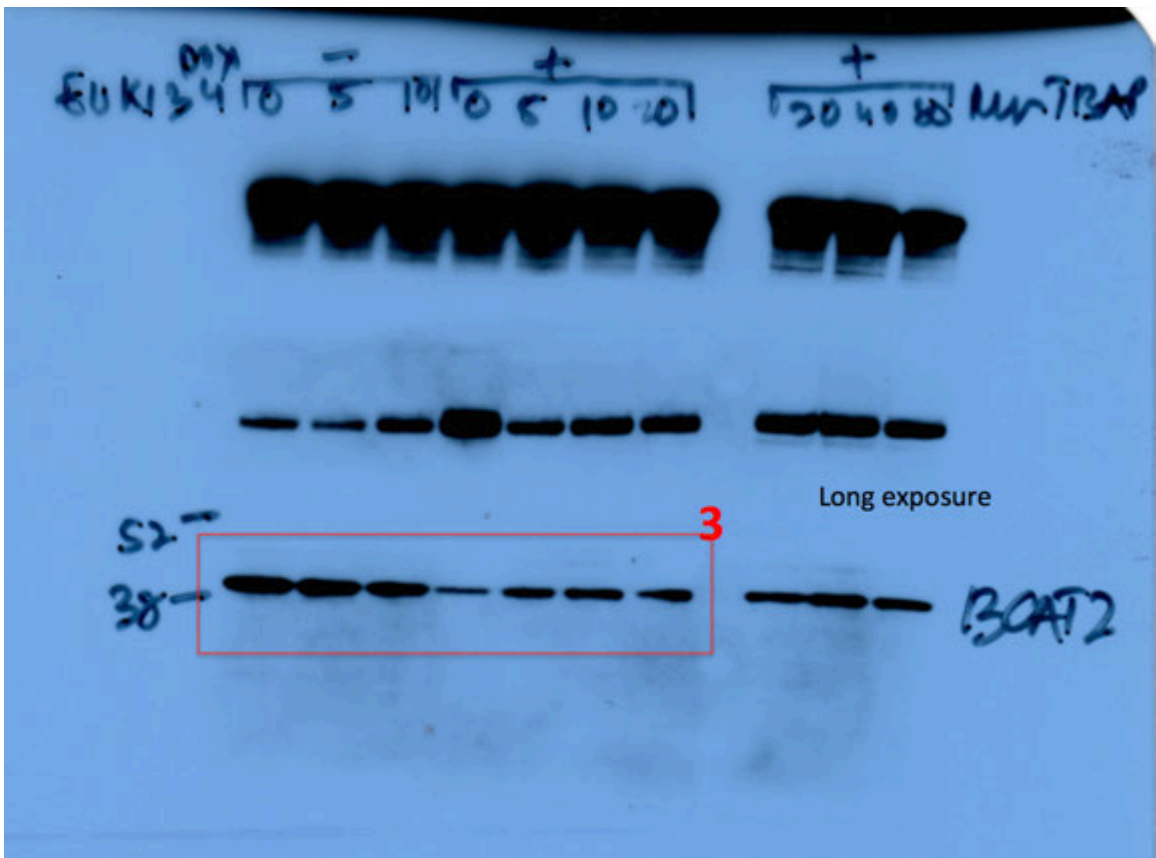


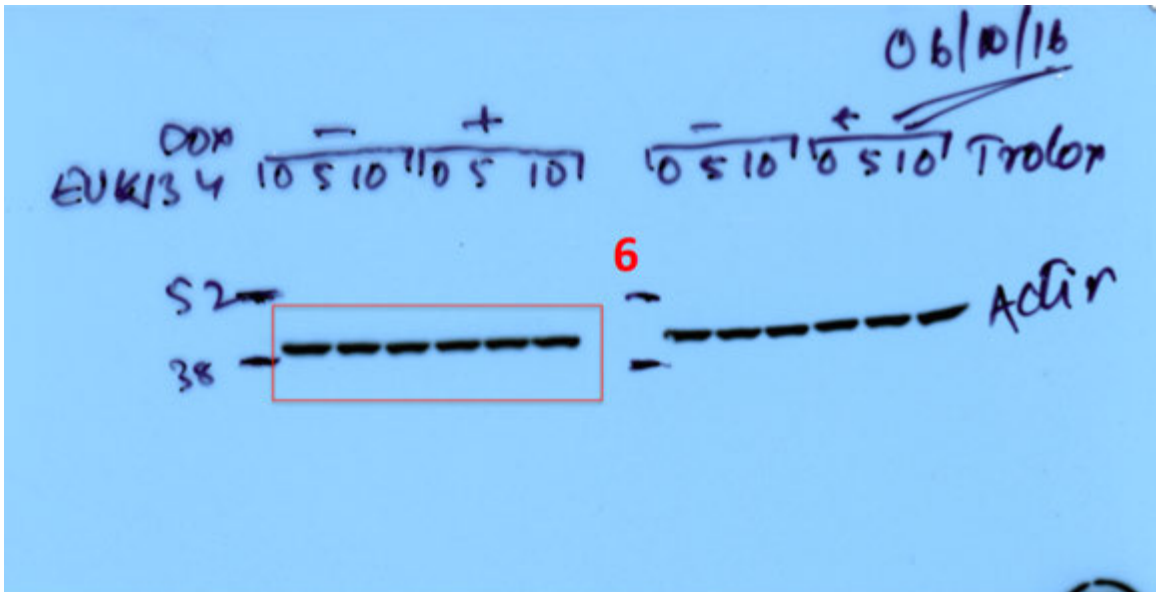






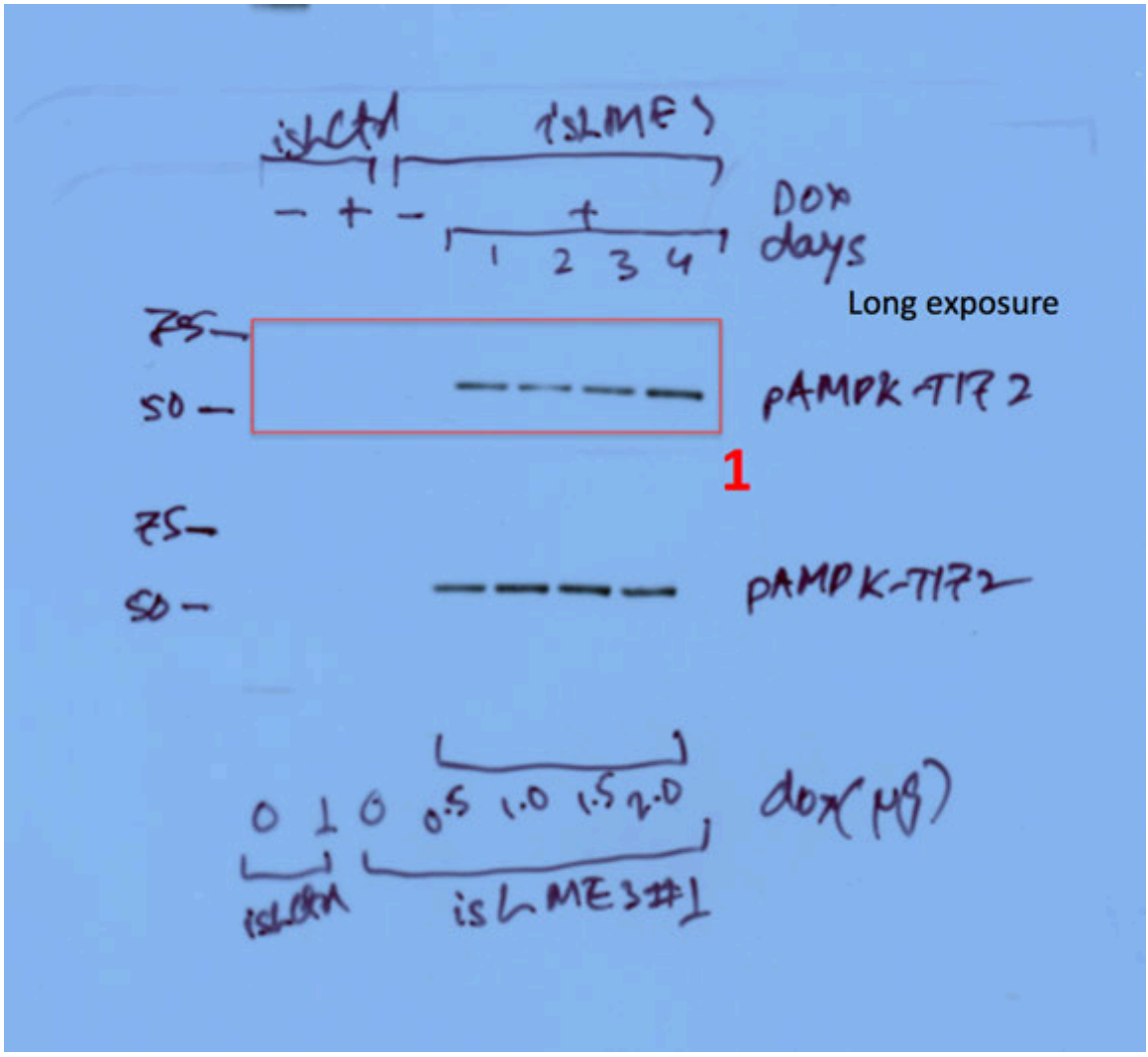
Supplementary Figure 5: Un-cropped immunoblot scans for Fig 4c. Raw film scans with red box indicating the area shown in the display. Numbers in red indicates the panel (numbered from top to down) in the figure.

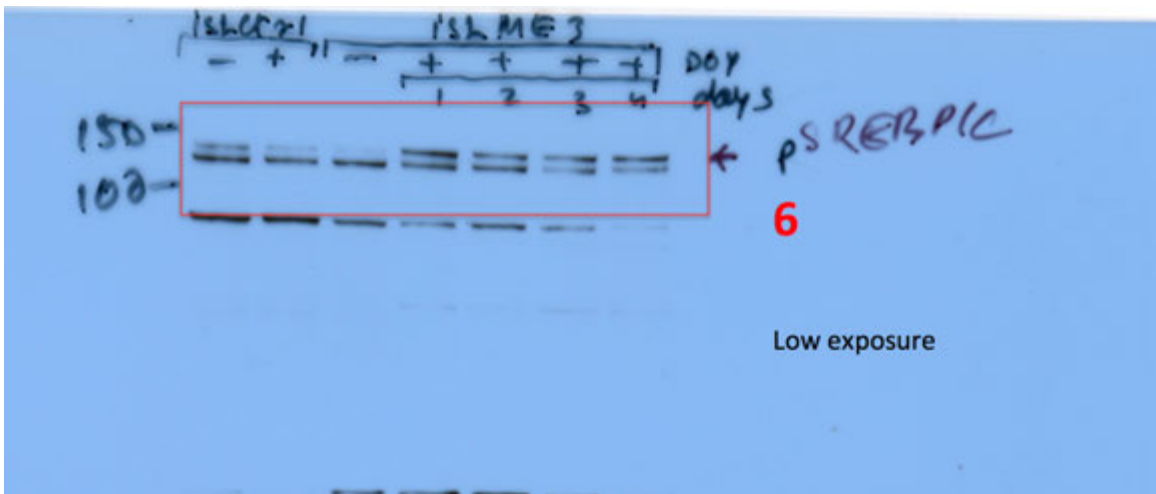
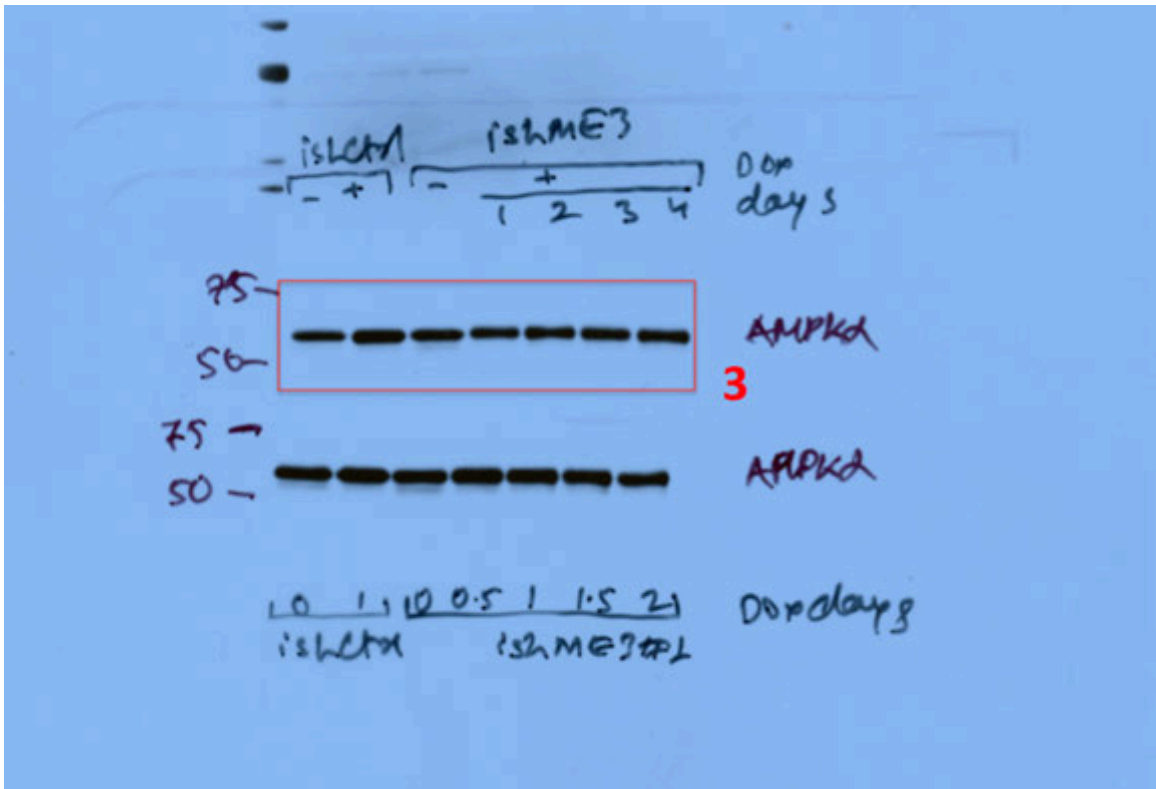


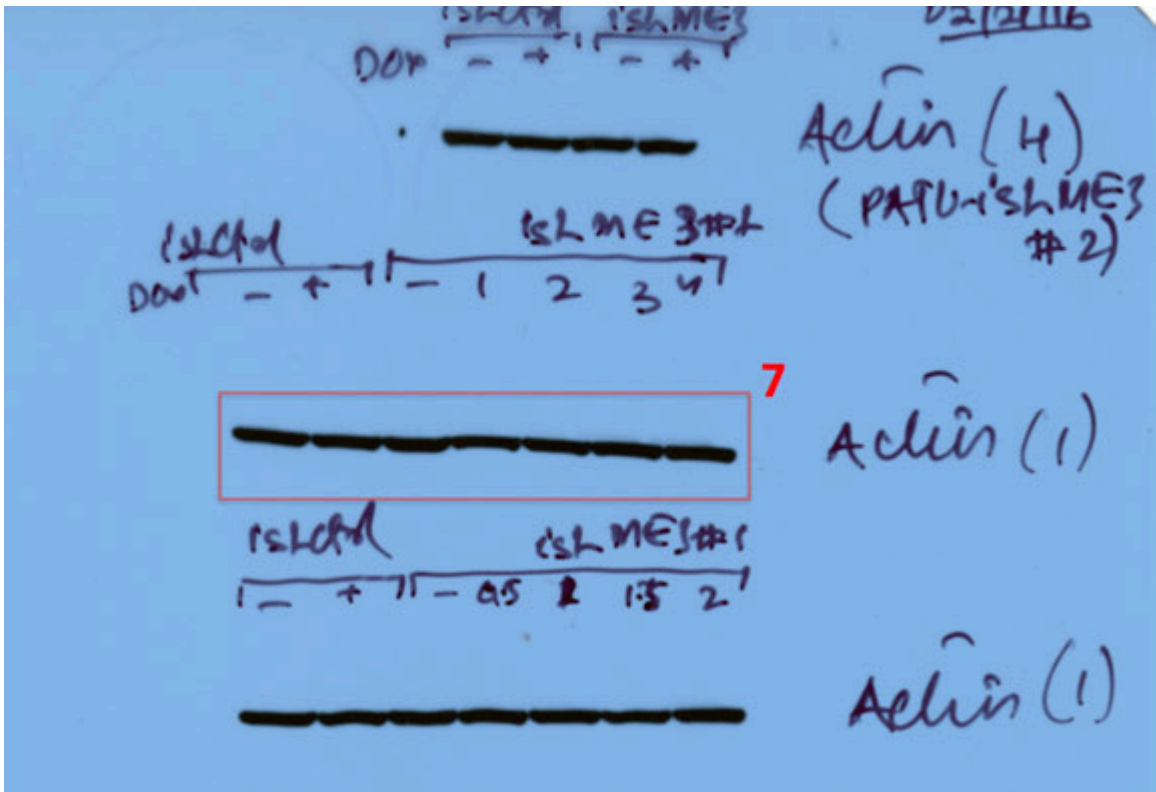
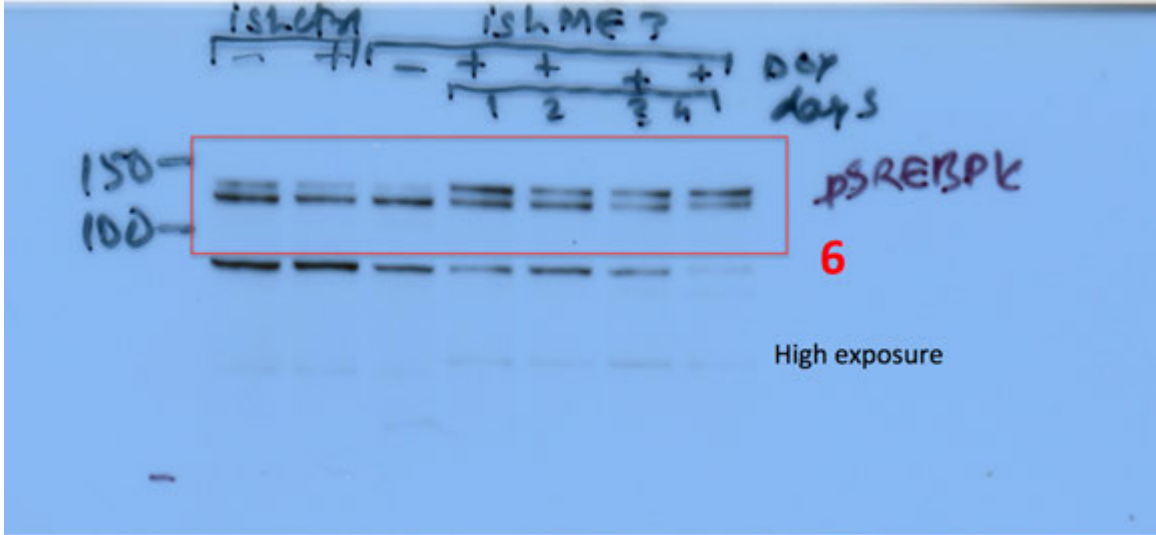


Supplementary Figure 6: Un-cropped immunoblot scans for **Fig 4d**. Raw film scans with red box indicating the area shown in the display. Numbers in red indicates the panel (numbered from top to down) in the figure.

Supplementary Figure 7

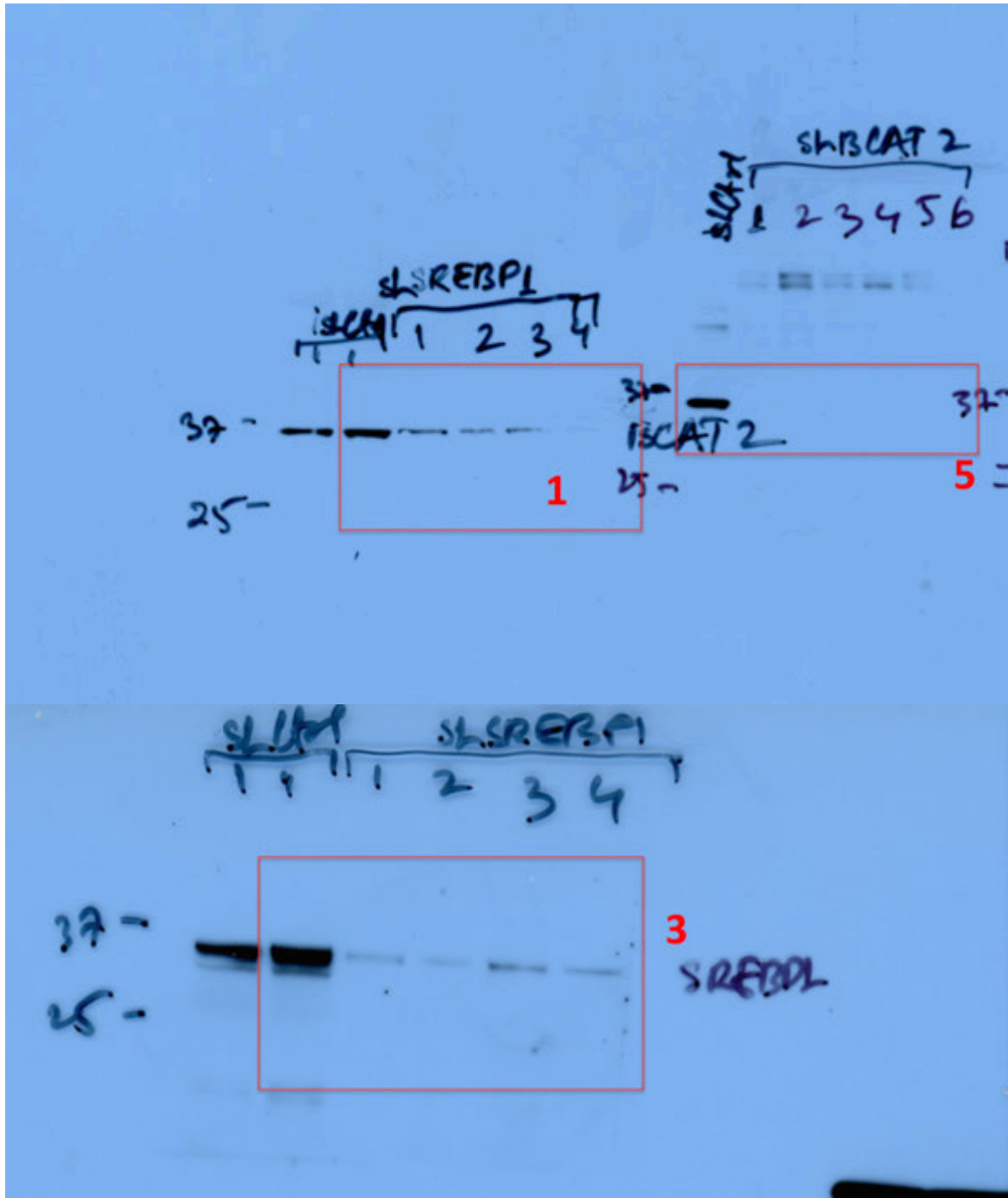


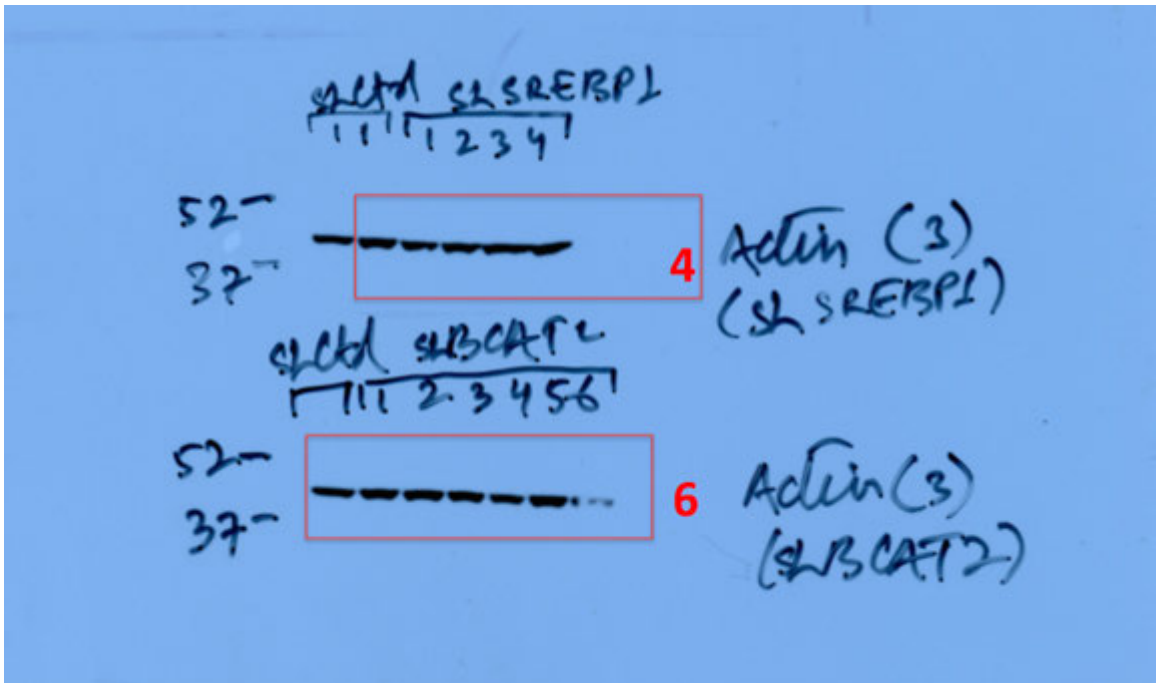




Supplementary Figure 7: Un-cropped immunoblot scans for Fig 4f. Raw film scans with red box indicating the area shown in the display. Numbers in red indicates the panel (numbered from top to down) in the figure.

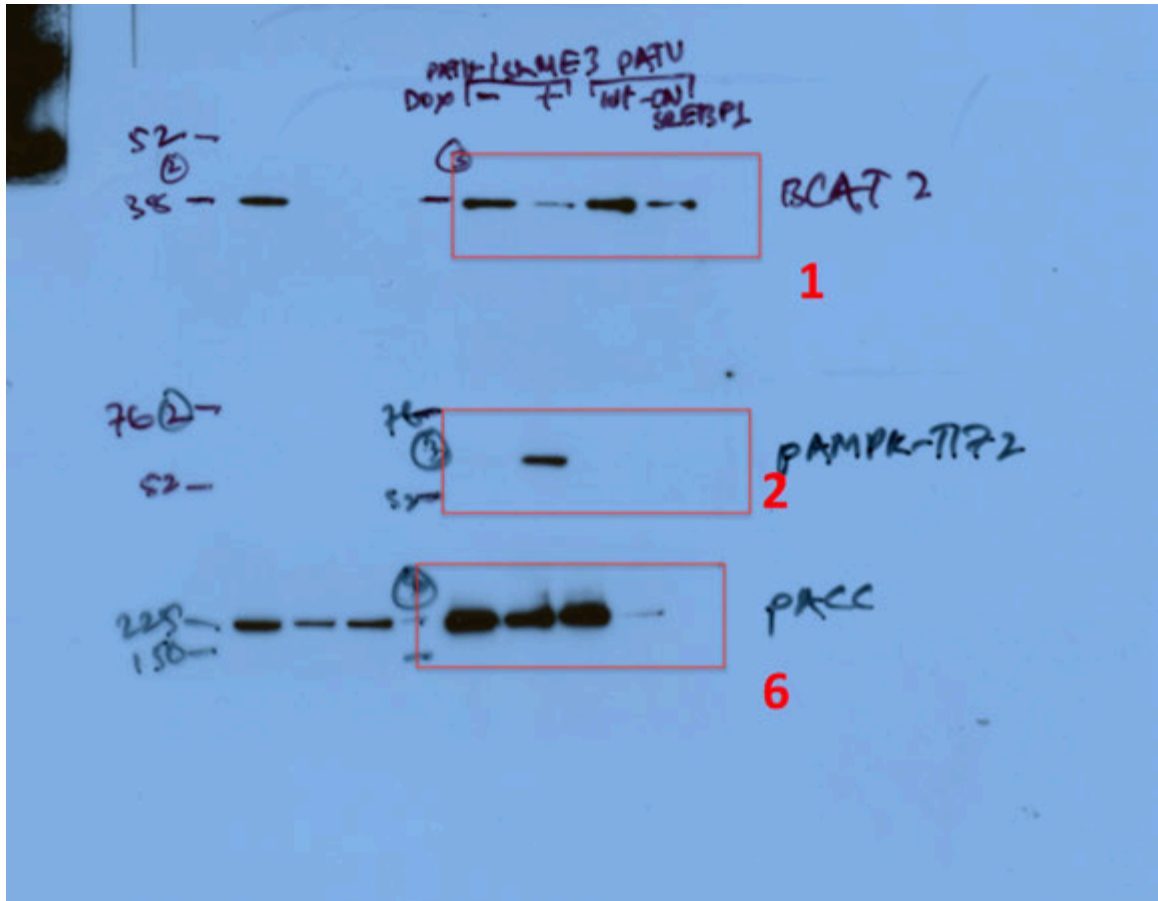
Supplementary Figure 8





Supplementary Figure 8: Un-cropped immunoblot scans for Fig 4g. Raw film scans with red box indicating the area shown in the display. Numbers in red indicates the panel (numbered from top to down) in the figure.

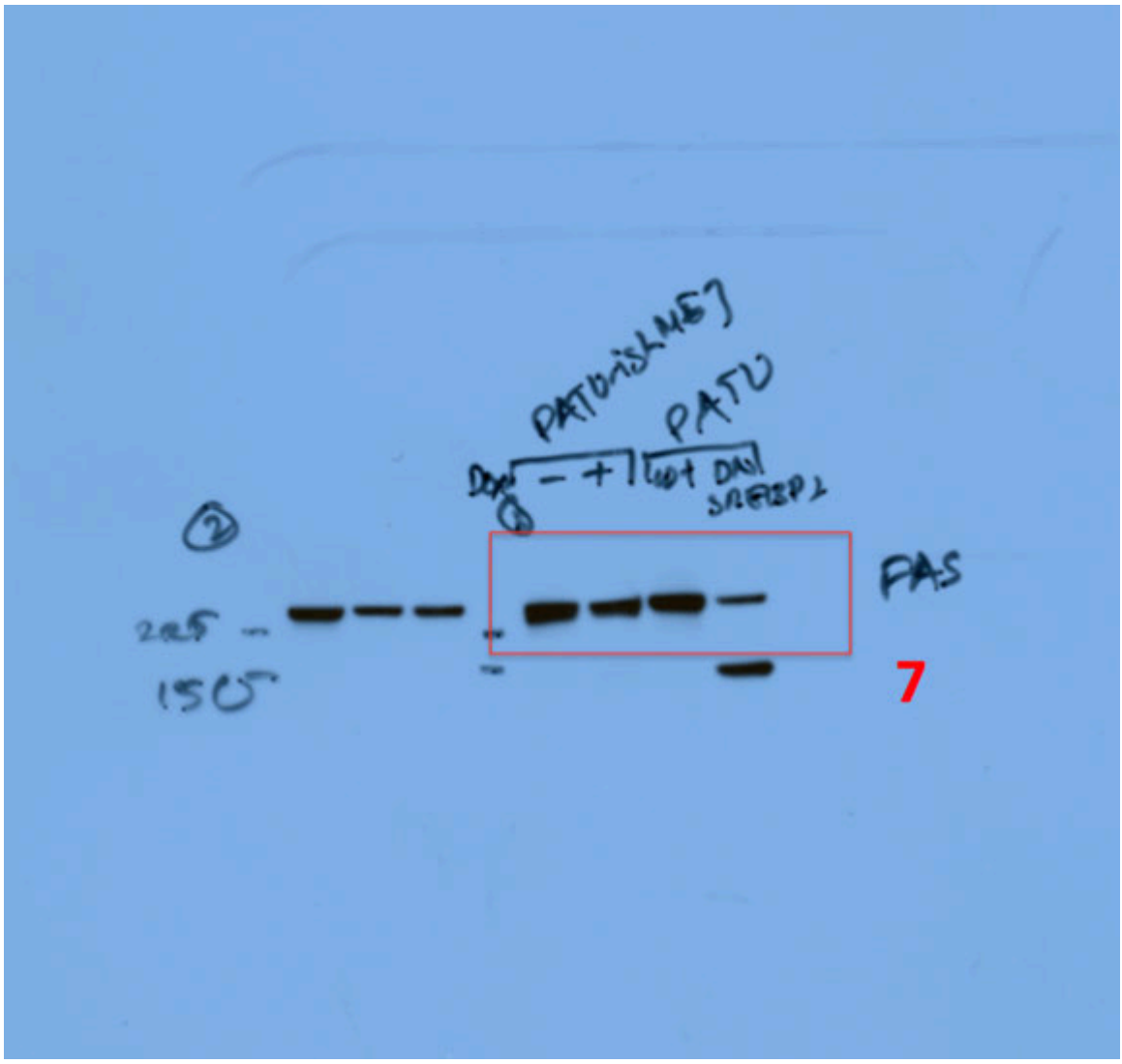
Supplementary Figure 9

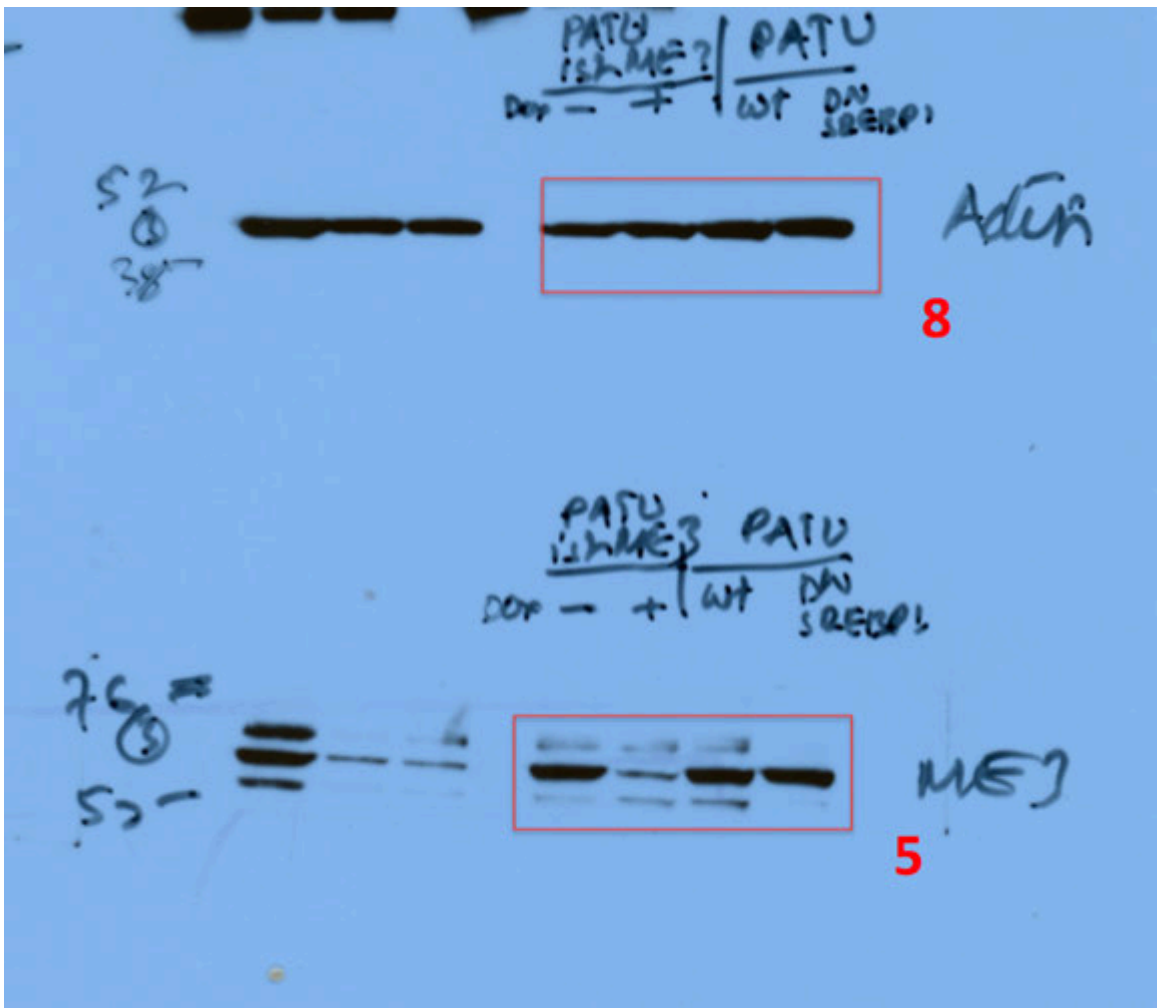


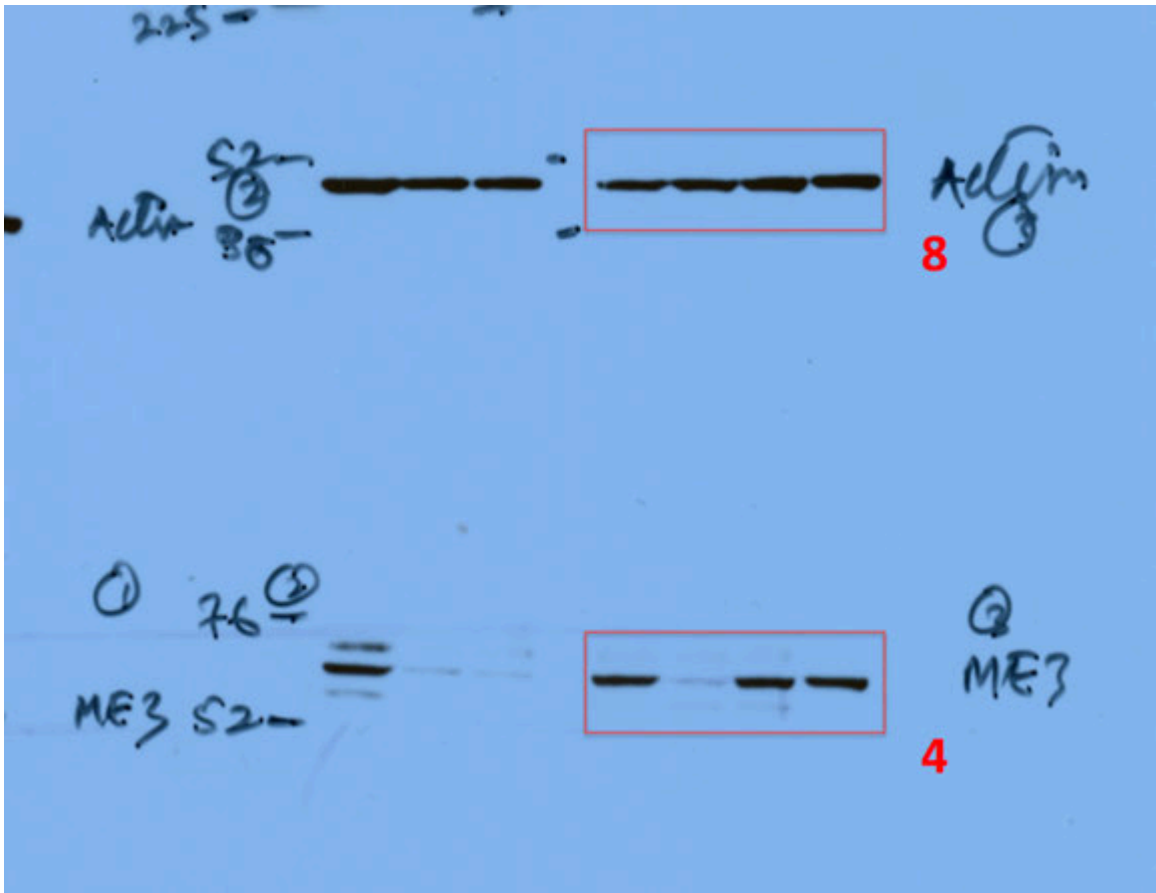
52-
38-
52-
38-
1 BCAT2

760-
52-

225-
158-
PACC

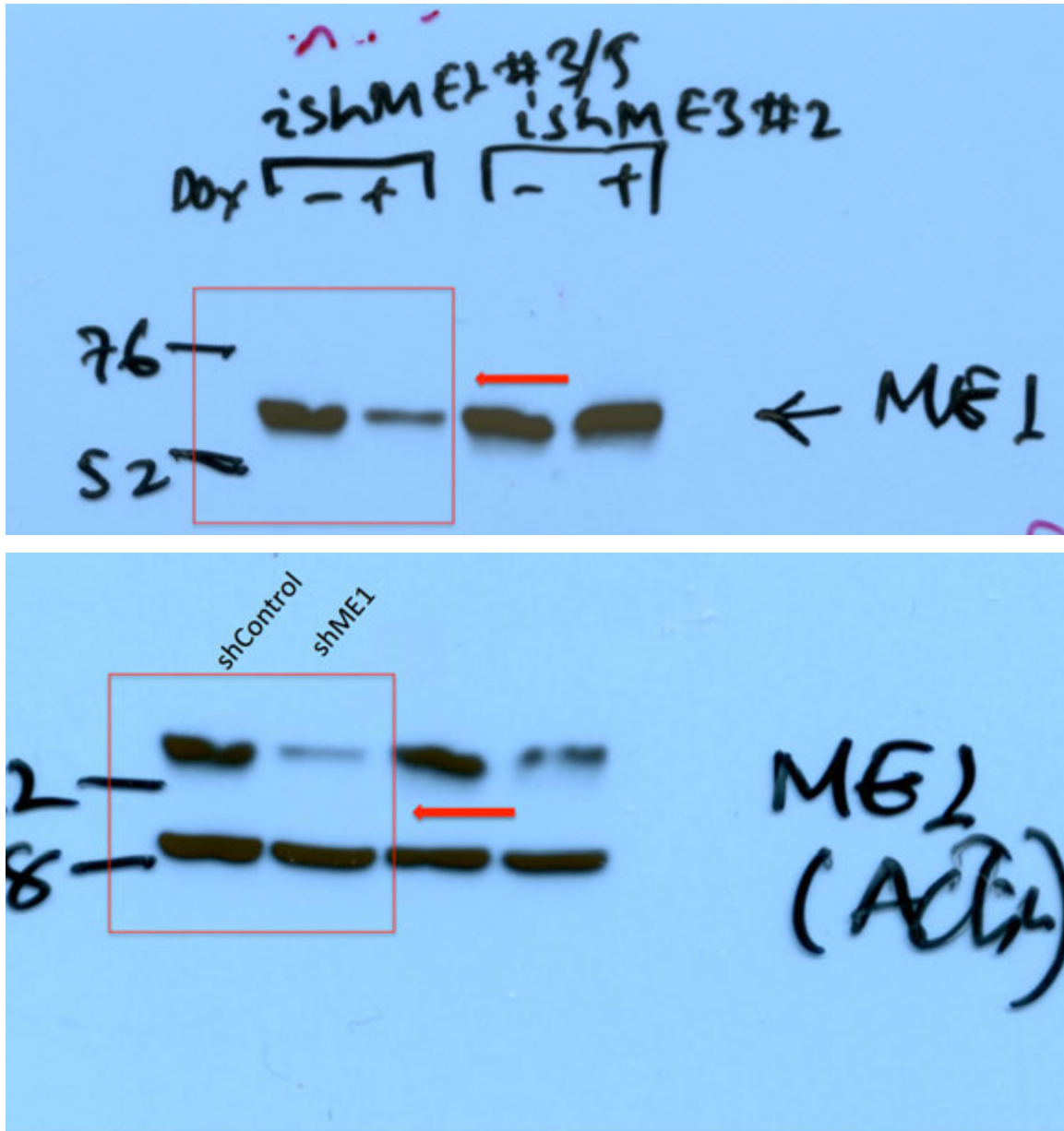






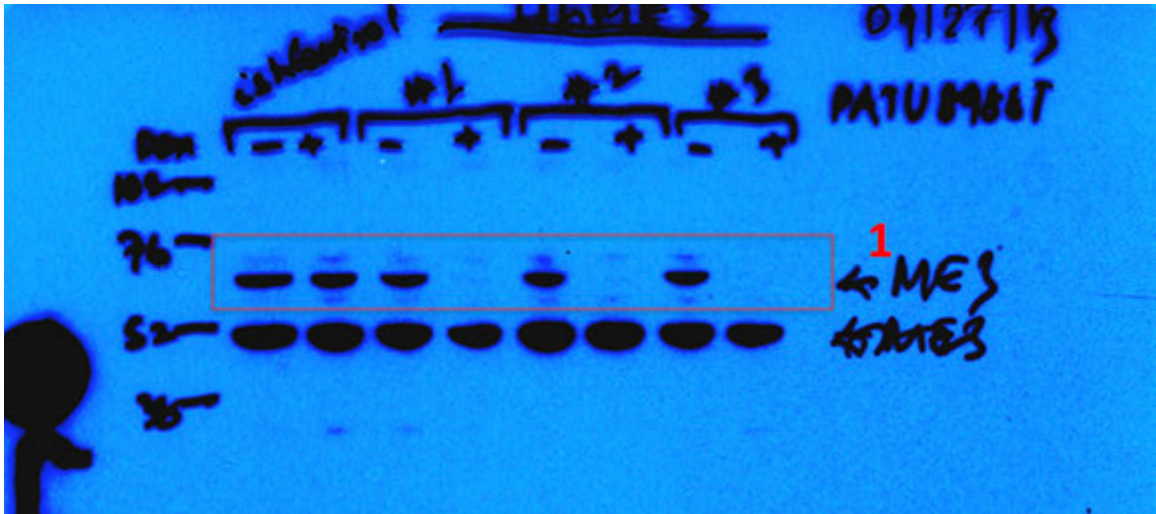
Supplementary Figure 9: Un-cropped immunoblot scans for **Fig 4i**. Raw film scans with red box indicating the area shown in the display. Numbers in red indicates the panel (numbered from top to down) in the figure.

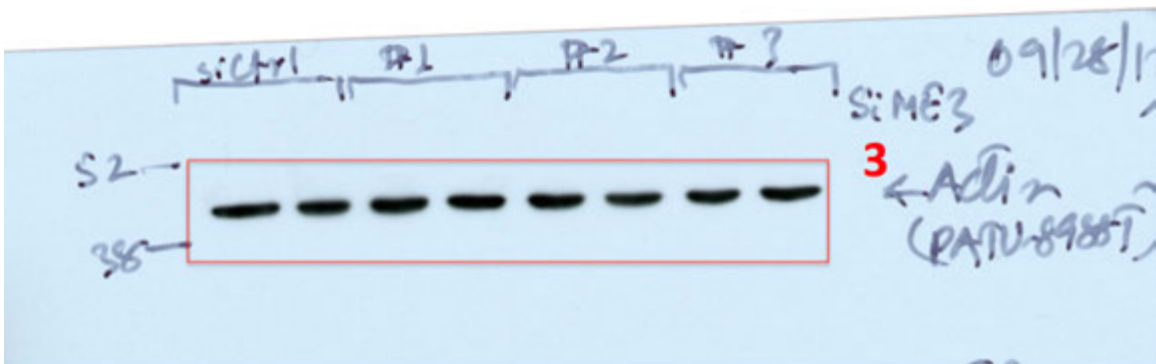
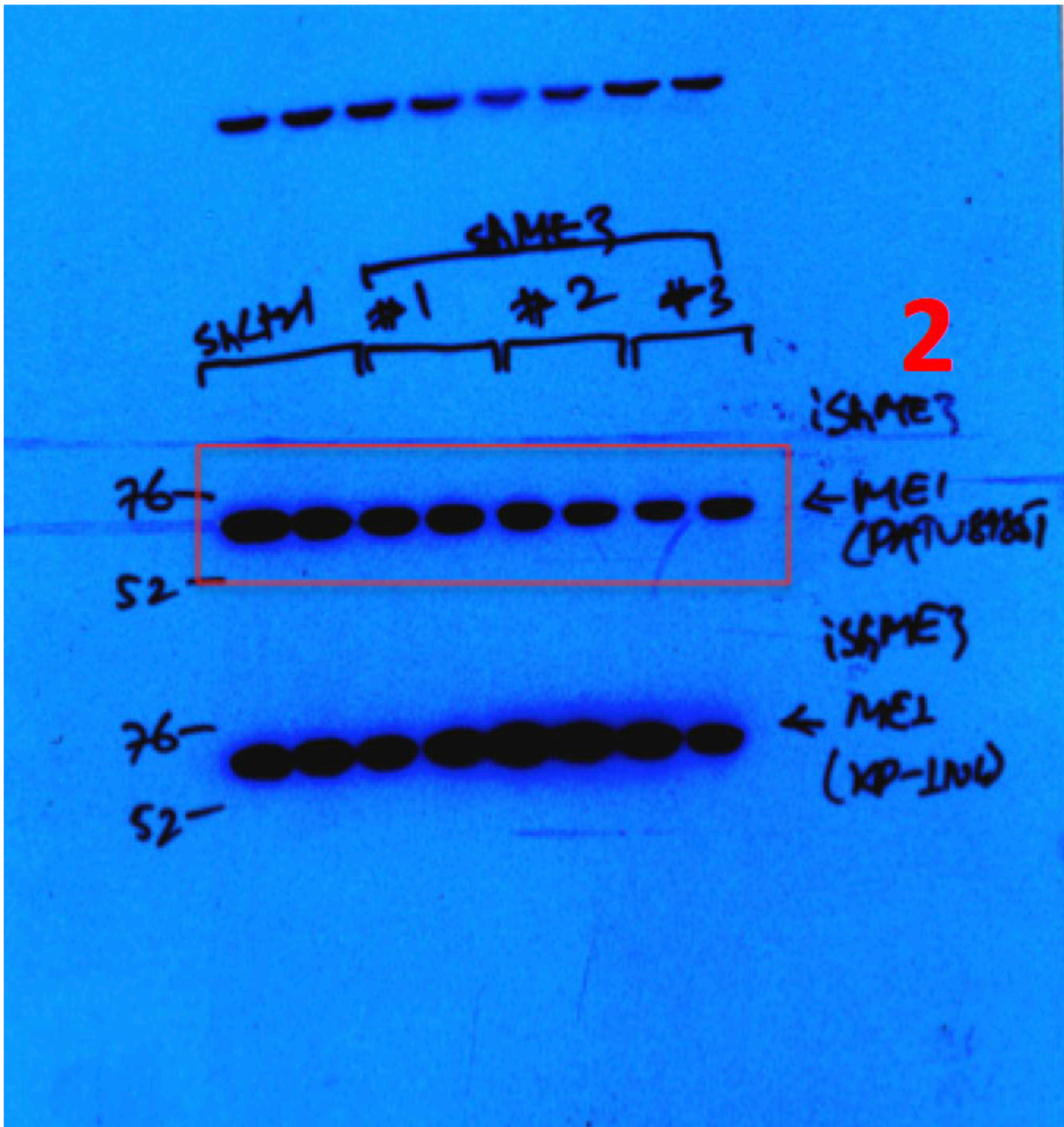
Supplementary Figure 10



Supplementary Figure 10: Un-cropped immunoblot scans for **Extended Fig 2c**. Raw film scans with red box indicating the area shown in the display. Numbers in red indicates the panel (numbered from top to down) in the figure.

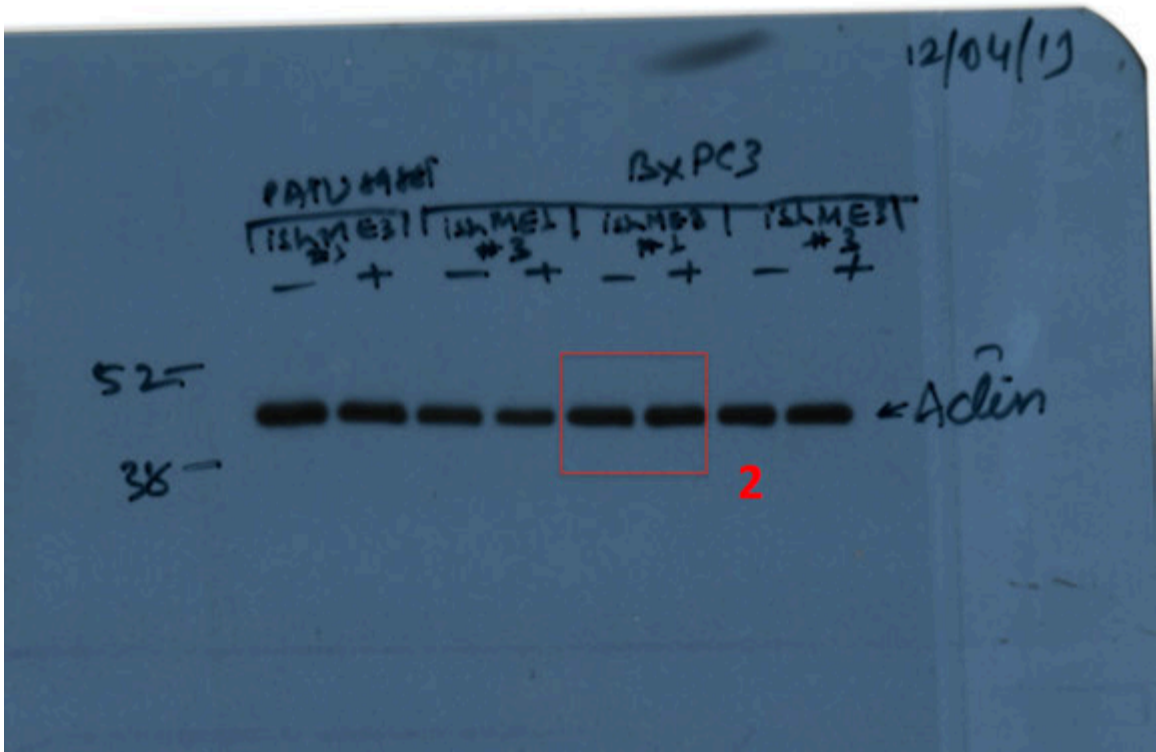
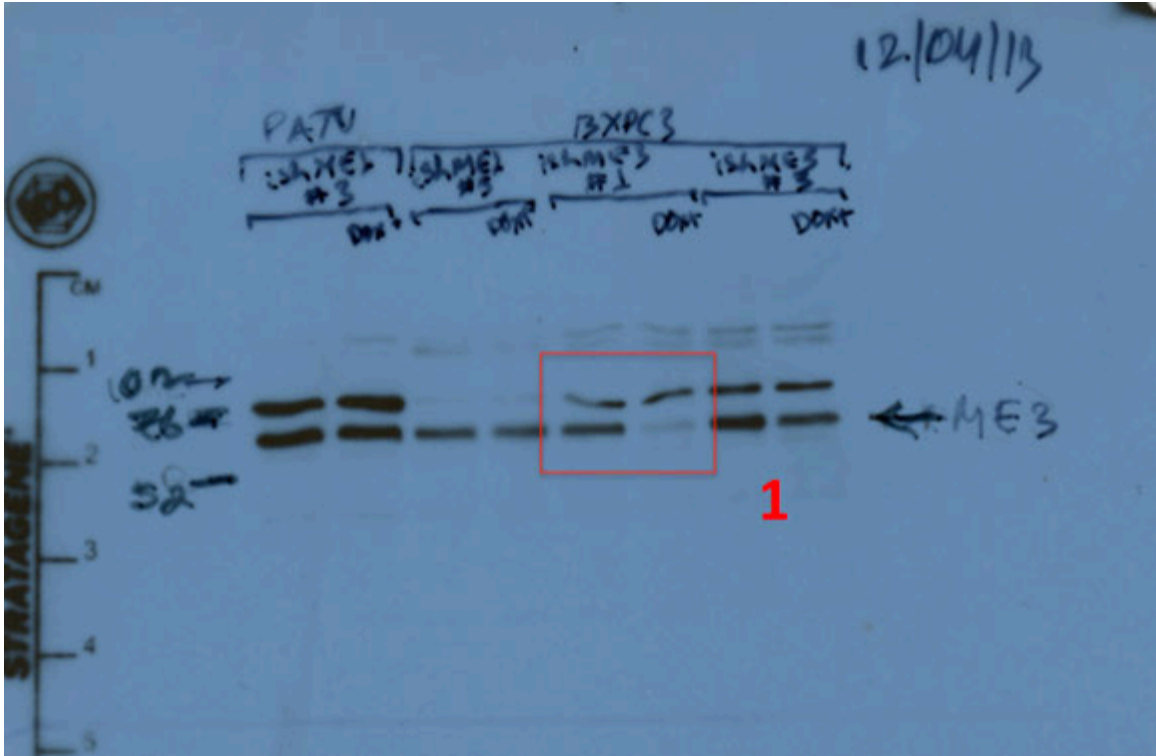
Supplementary Figure 11





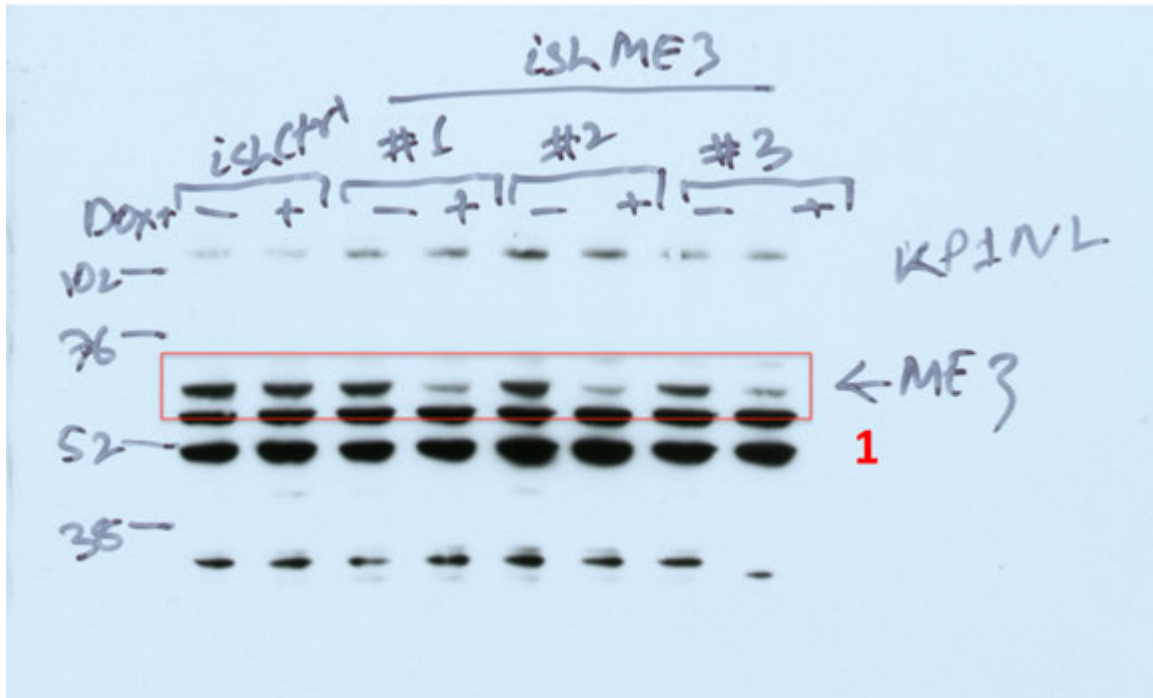
Supplementary Figure 11: Un-cropped immunoblot scans for **Extended Fig 3a**. Raw film scans with red box indicating the area shown in the display. Numbers in red indicates the panel (numbered from top to down) in the figure.

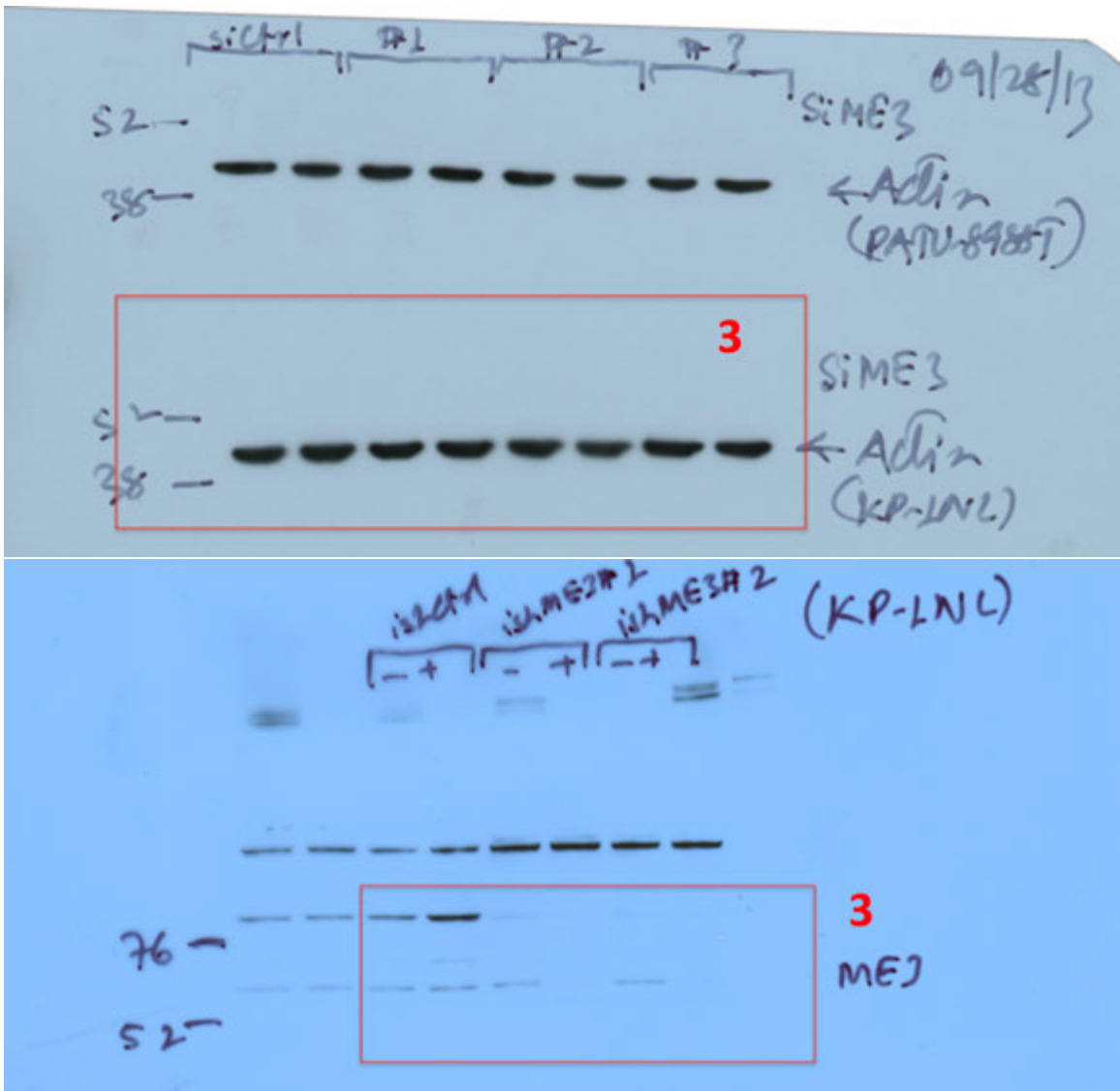
Supplementary Figure 12



Supplementary Figure 12: Un-cropped immunoblot scans for **Extended Fig 3b**. Raw film scans with red box indicating the area shown in the display. Numbers in red indicates the panel (numbered from top to down) in the figure.

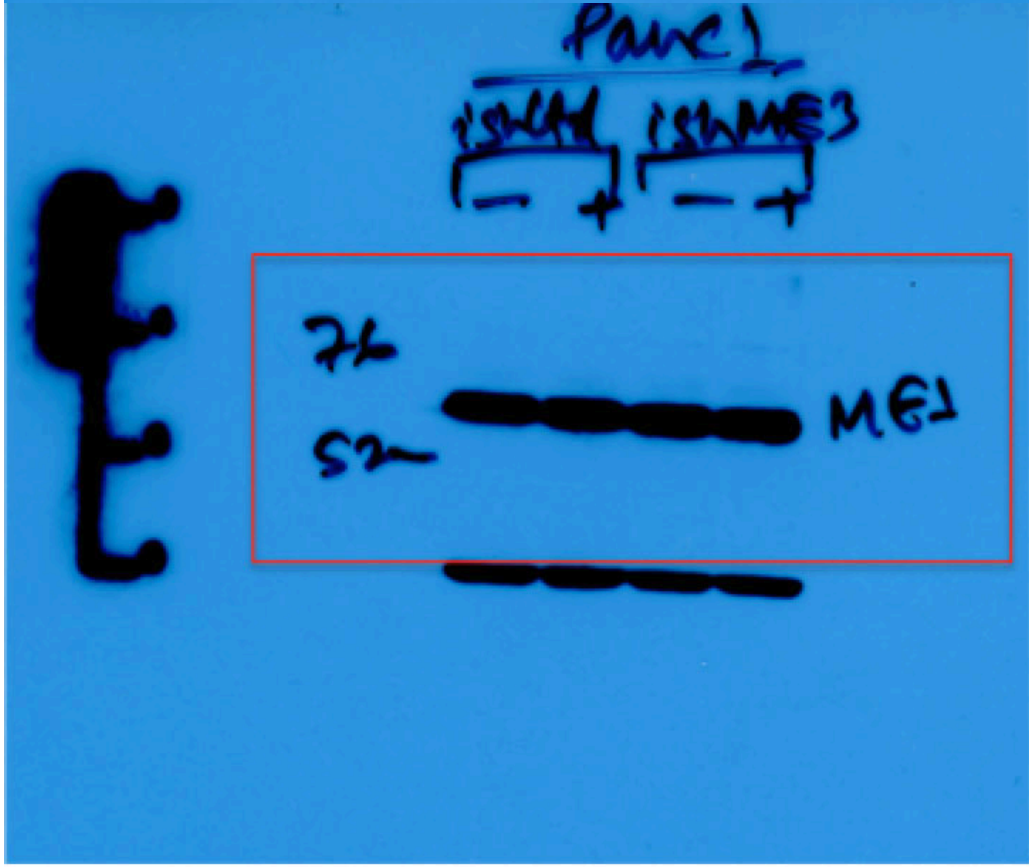
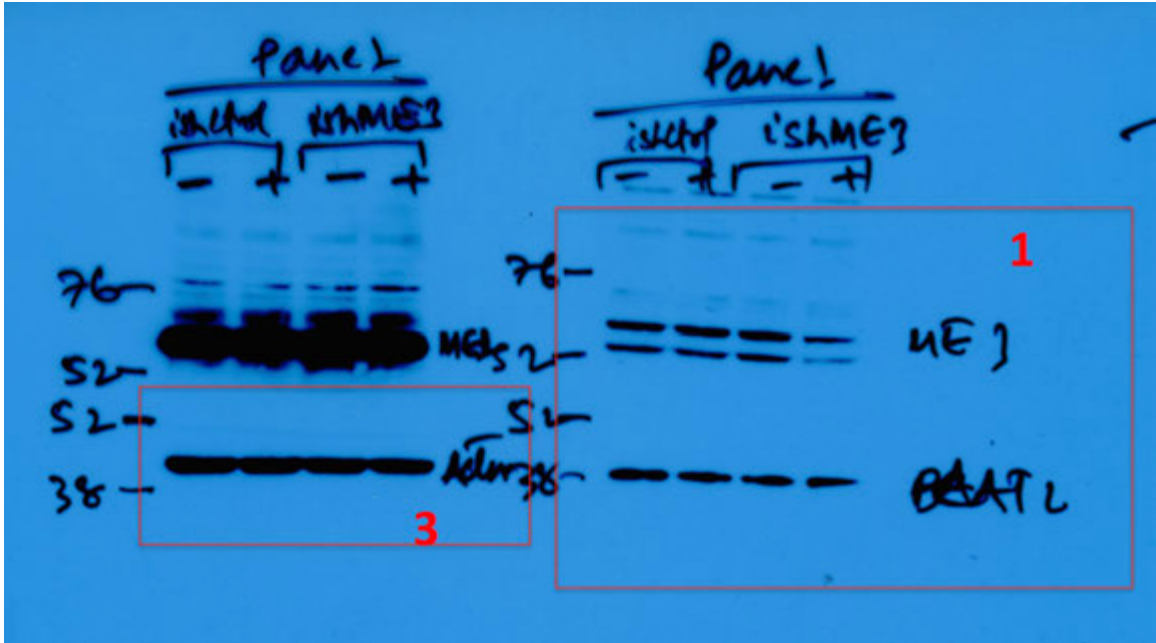
Supplementary Figure 13





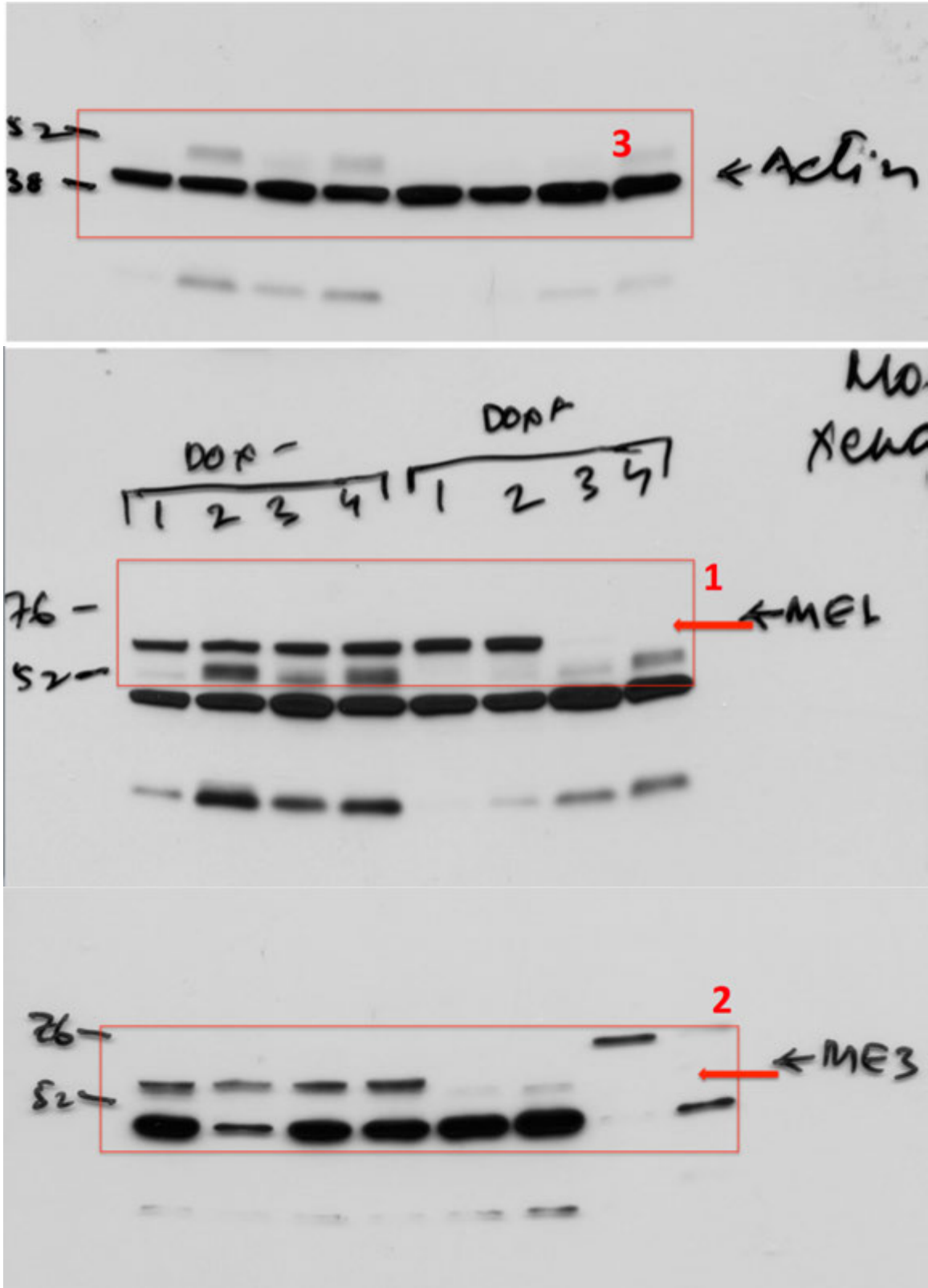
Supplementary Figure 13: Un-cropped immunoblot scans for **Extended Fig 3c**. Raw film scans with red box indicating the area shown in the display. Numbers in red indicates the panel (numbered from top to down) in the figure.

Supplementary Figure 14



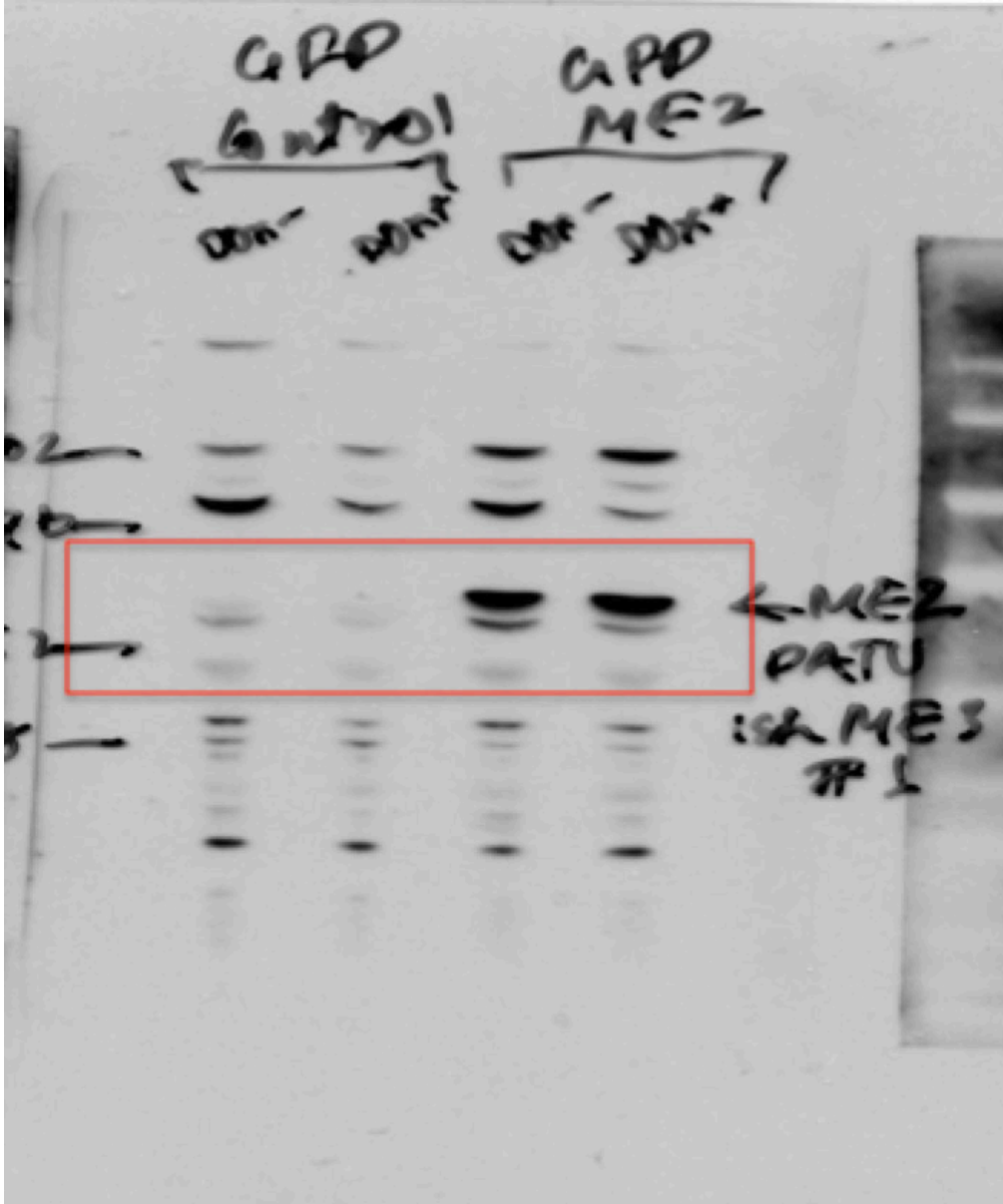
Supplementary Figure 14: Un-cropped immunoblot scans for **Extended Fig 3d**. Raw film scans with red box indicating the area shown in the display. Numbers in red indicates the panel (numbered from top to down) in the figure.

Supplementary Figure 15



Supplementary Figure 15: Un-cropped immunoblot scans for **Extended Fig 3k**. Raw film scans with red box indicating the area shown in the display. Numbers in red indicates the panel (numbered from top to down) in the figure.

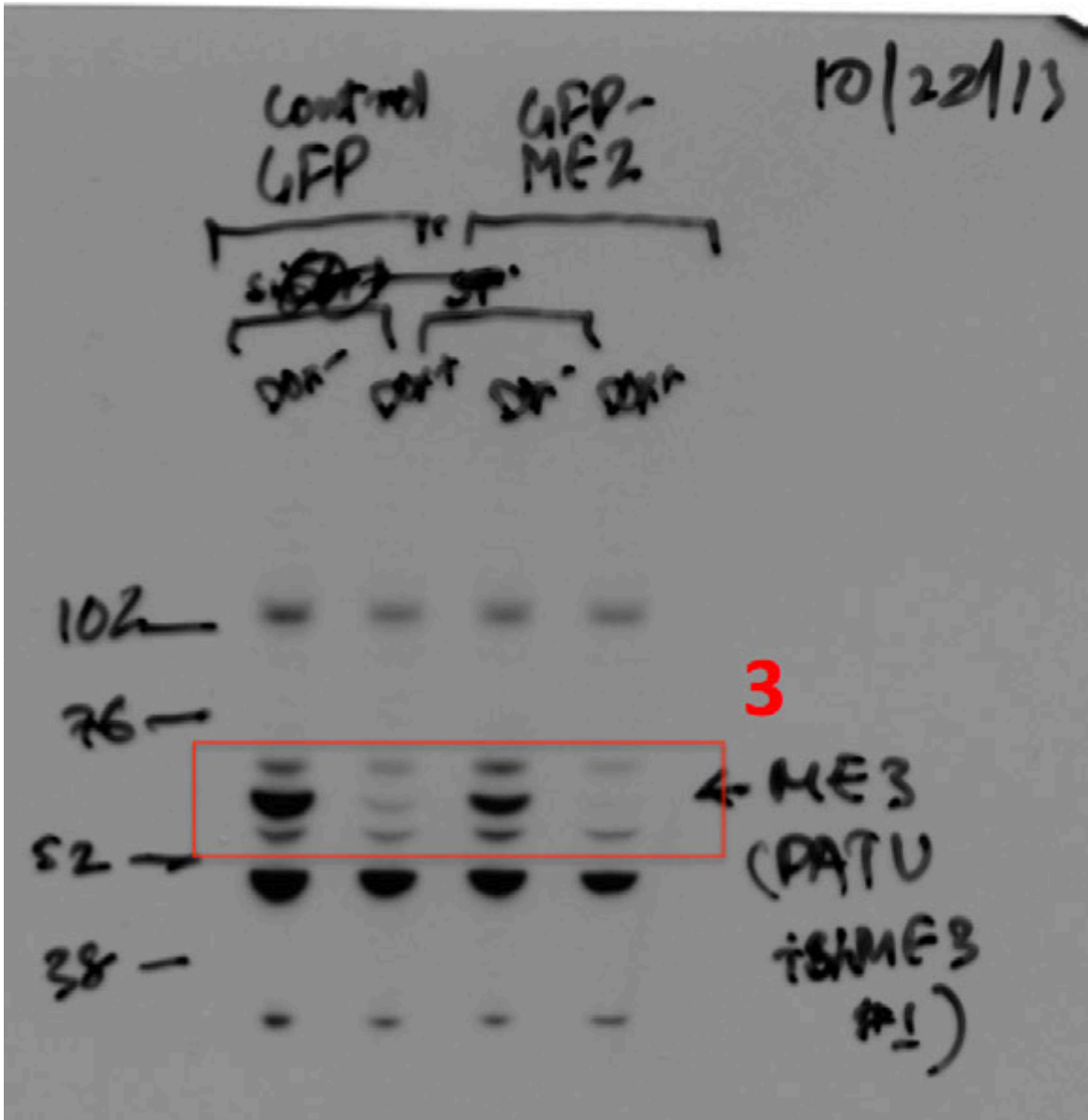
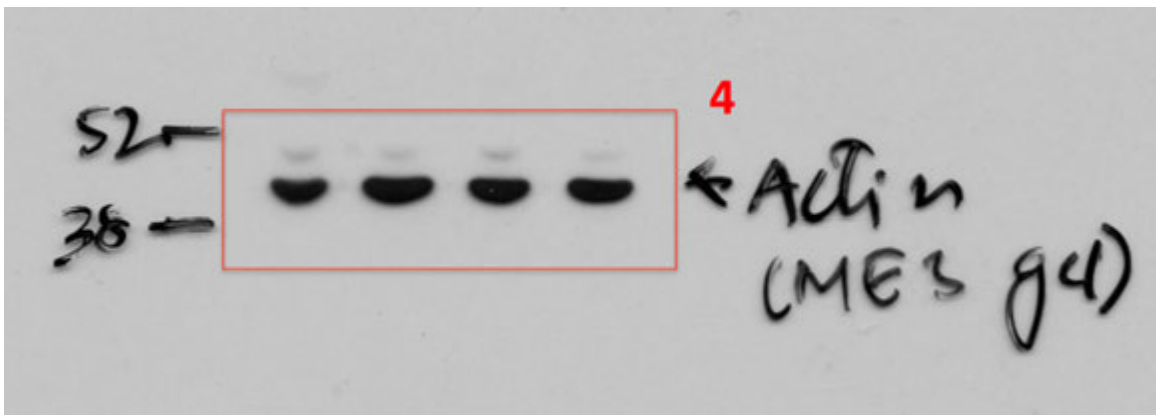
Supplementary Figure 16



2

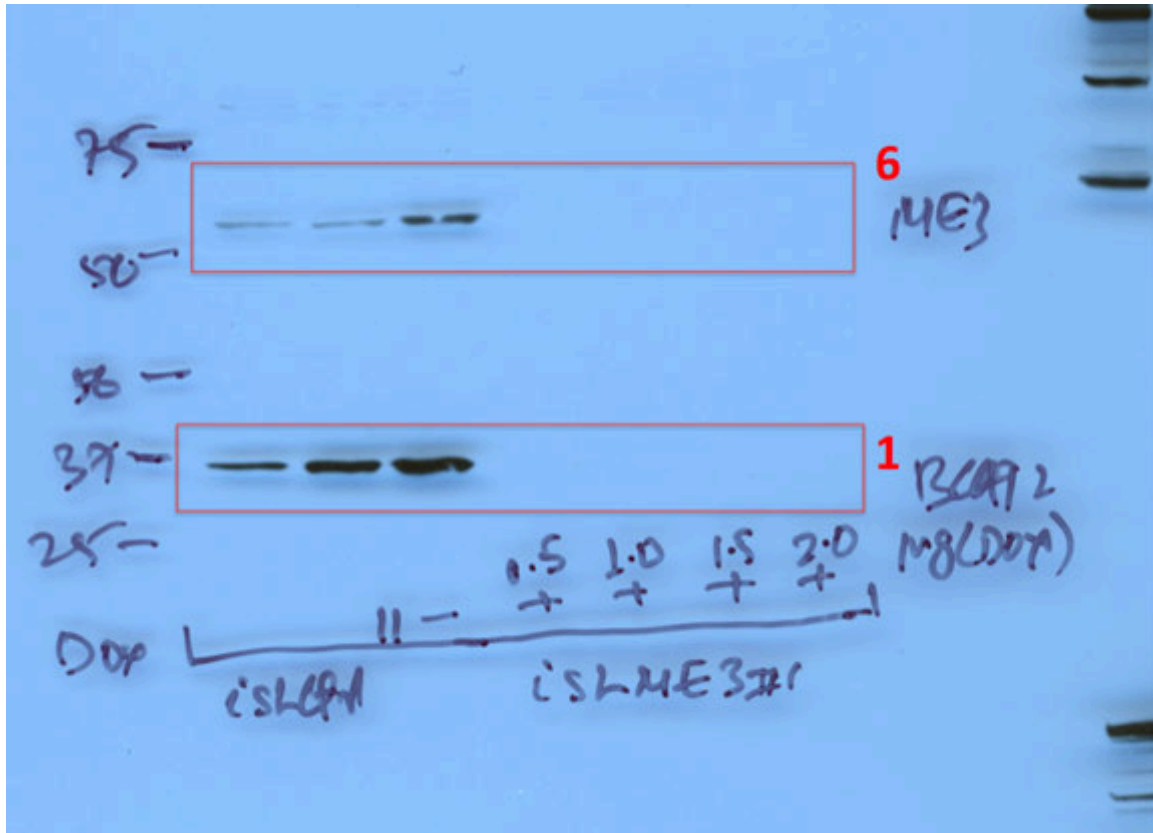


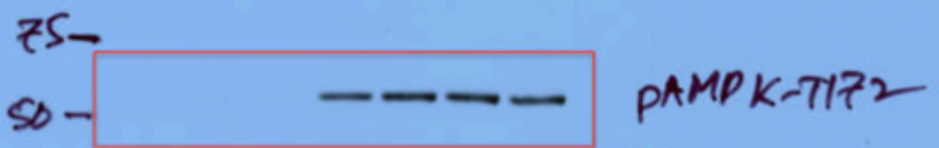
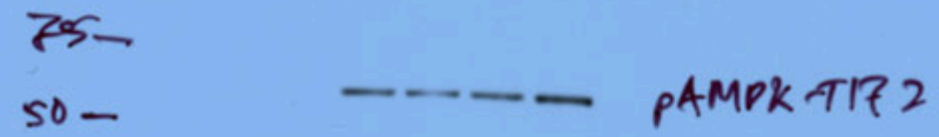
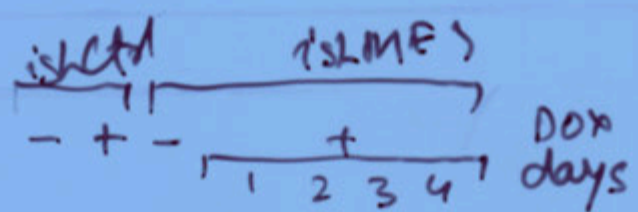
1



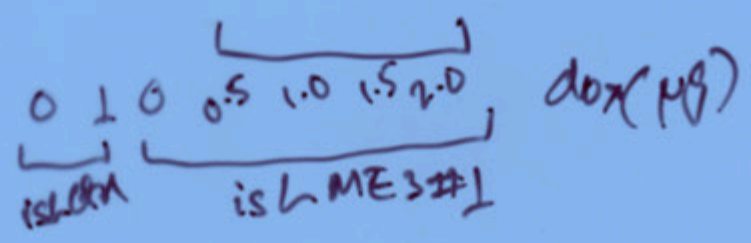
Supplementary Figure 16: Un-cropped immunoblot scans for **Extended Fig 5c**. Raw film scans with red box indicating the area shown in the display. Numbers in red indicates the panel (numbered from top to down) in the figure.

Supplementary Figure 17





3



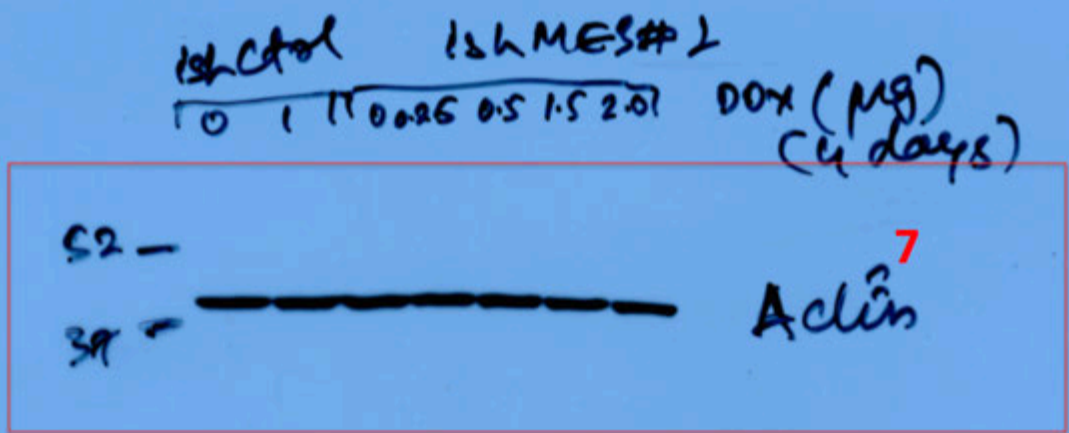
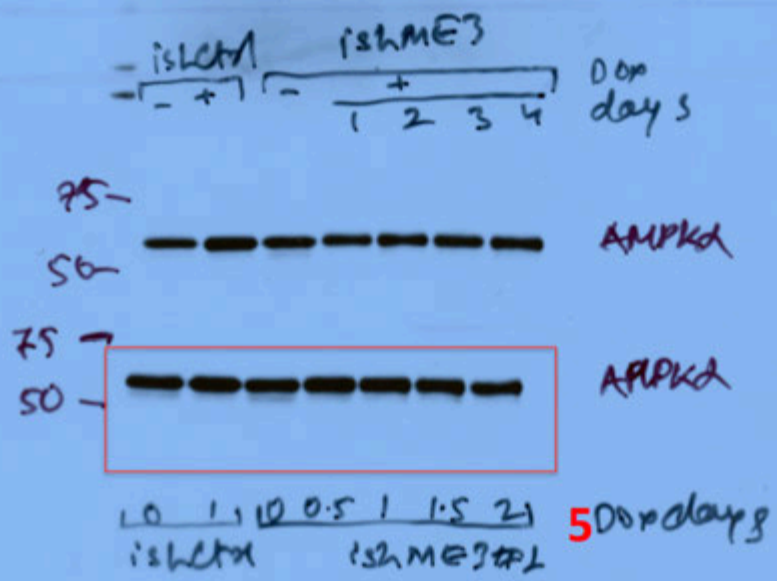
ishcpd ishME3
- + - +
1 2 3 4
day days

75 =
50 - PAMPK-T172

75 -
50 - PAMPK-T172

4

0 1 0 0.5 1.0 1.5 2.0
ishcpd ishME3
day (ng)

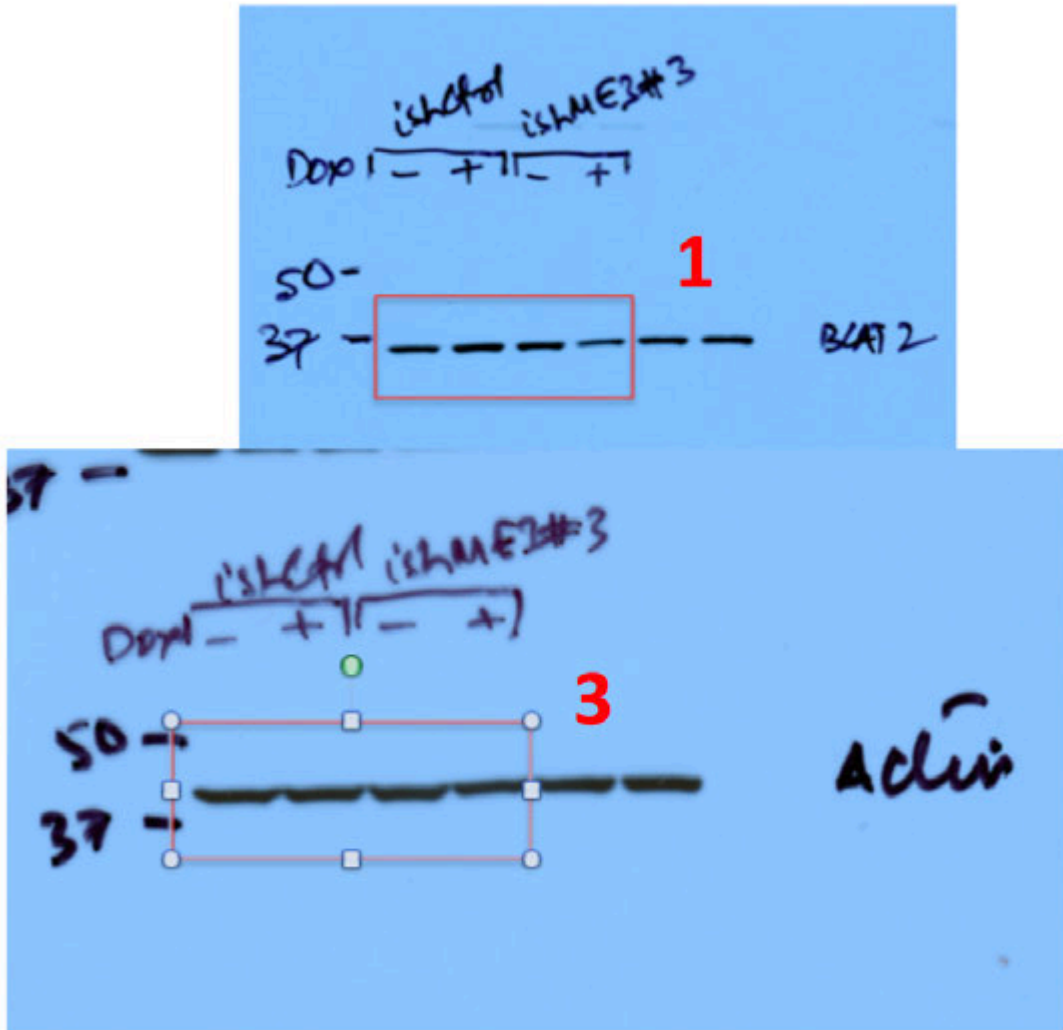


Supplementary Figure 17: Un-cropped immunoblot scans for Extended Fig 8b.

Raw film scans with red box indicating the area shown in the display.

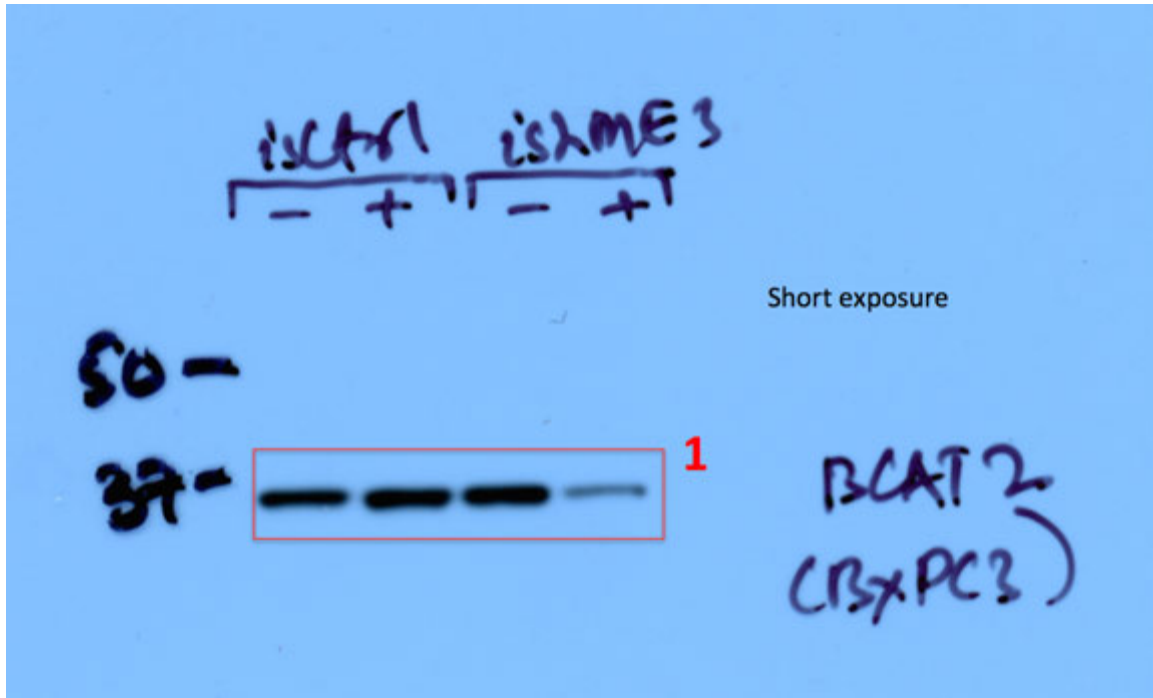
Numbers in red indicates the panel (numbered from top to down) in the figure.

Supplementary Figure 18



Supplementary Figure 18: Un-cropped immunoblot scans for **Extended Fig 8c**. Raw film scans with red box indicating the area shown in the display. Numbers in red indicates the panel (numbered from top to down) in the figure.

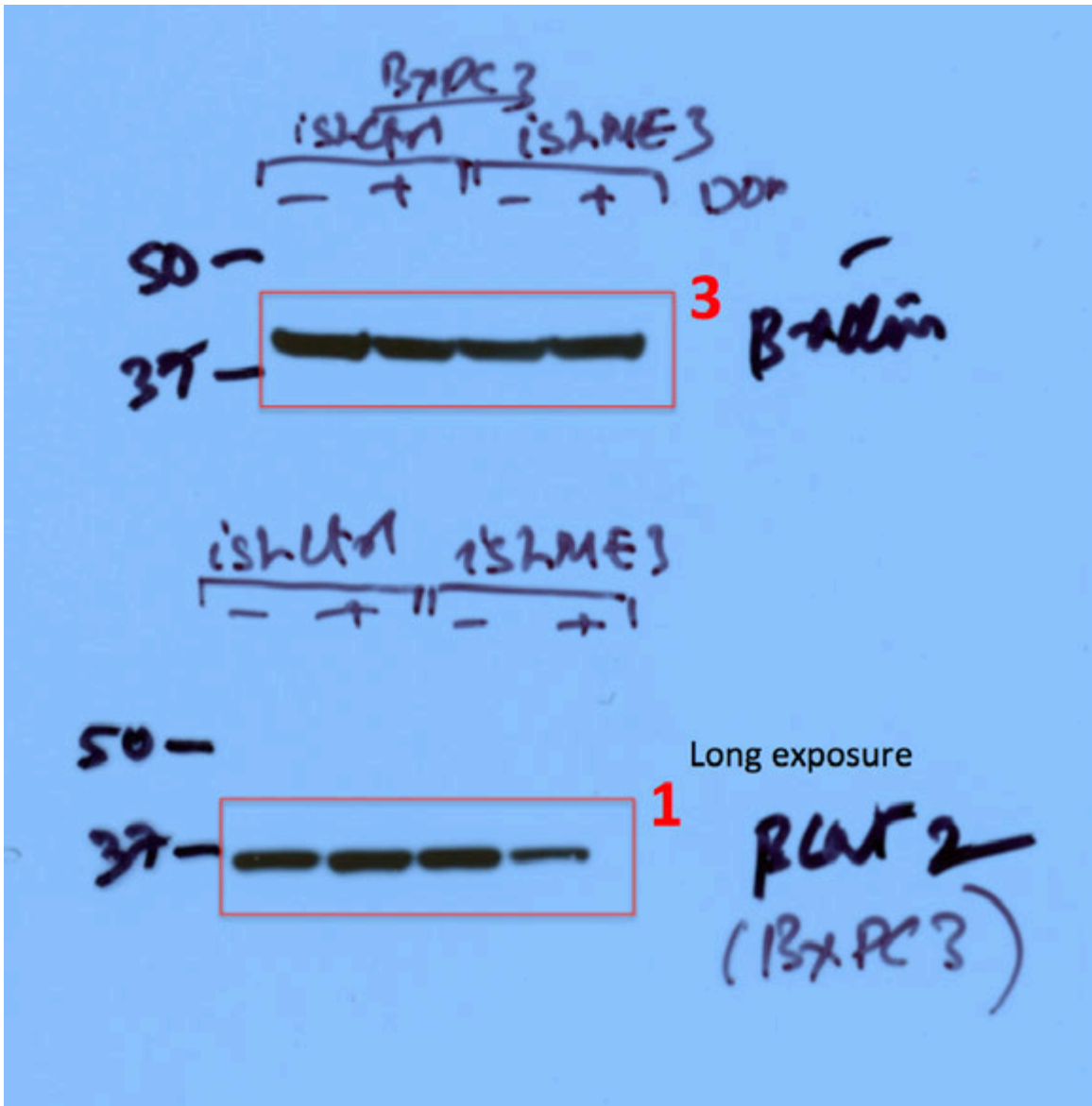
Supplementary Figure 19



BxPC3
i2hctrl i2hME3
- + - +

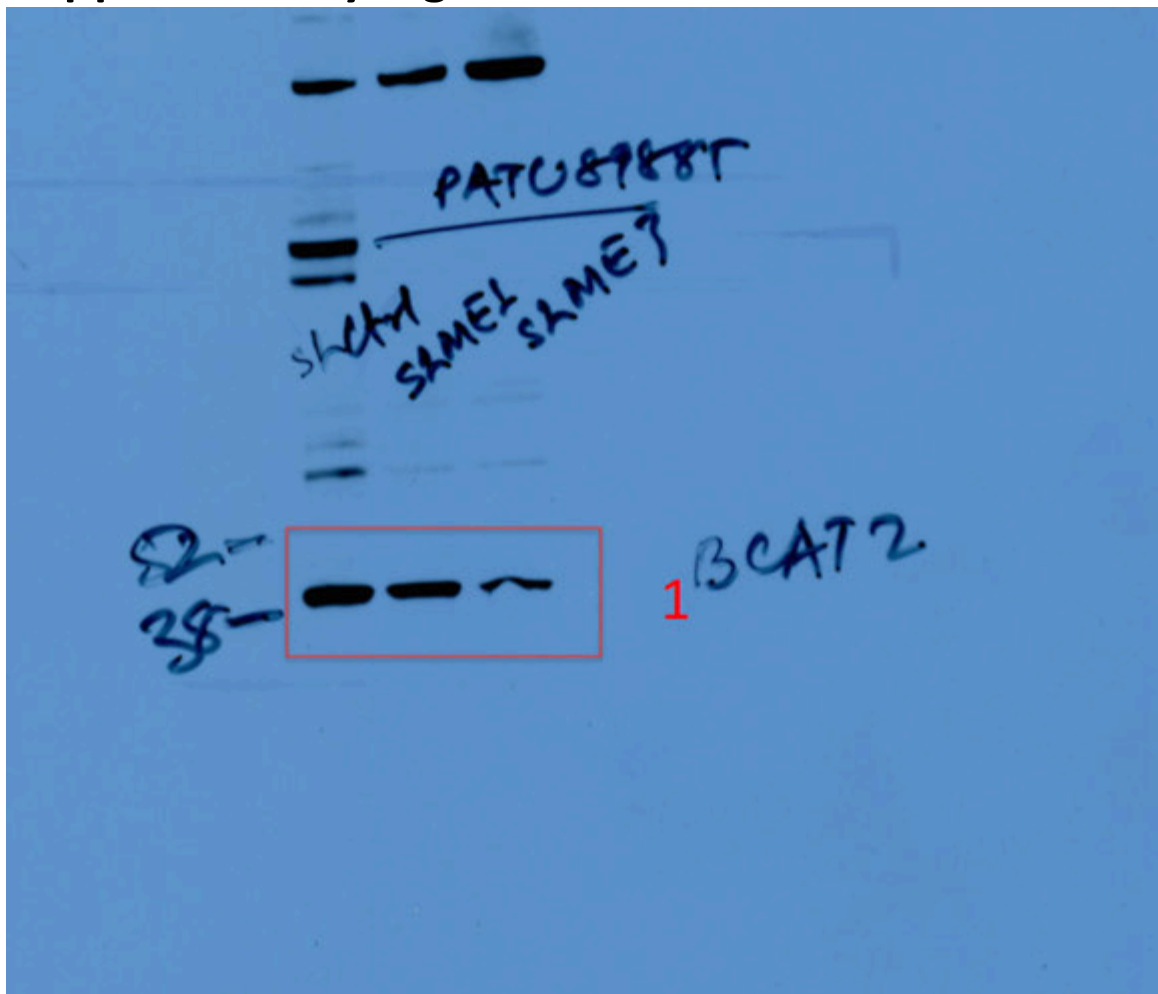
75



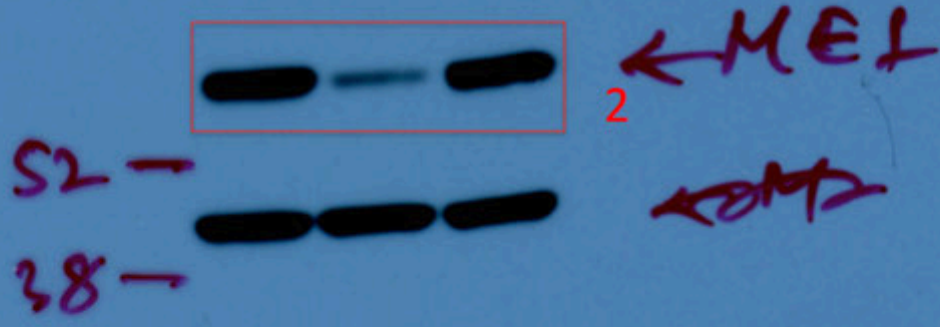


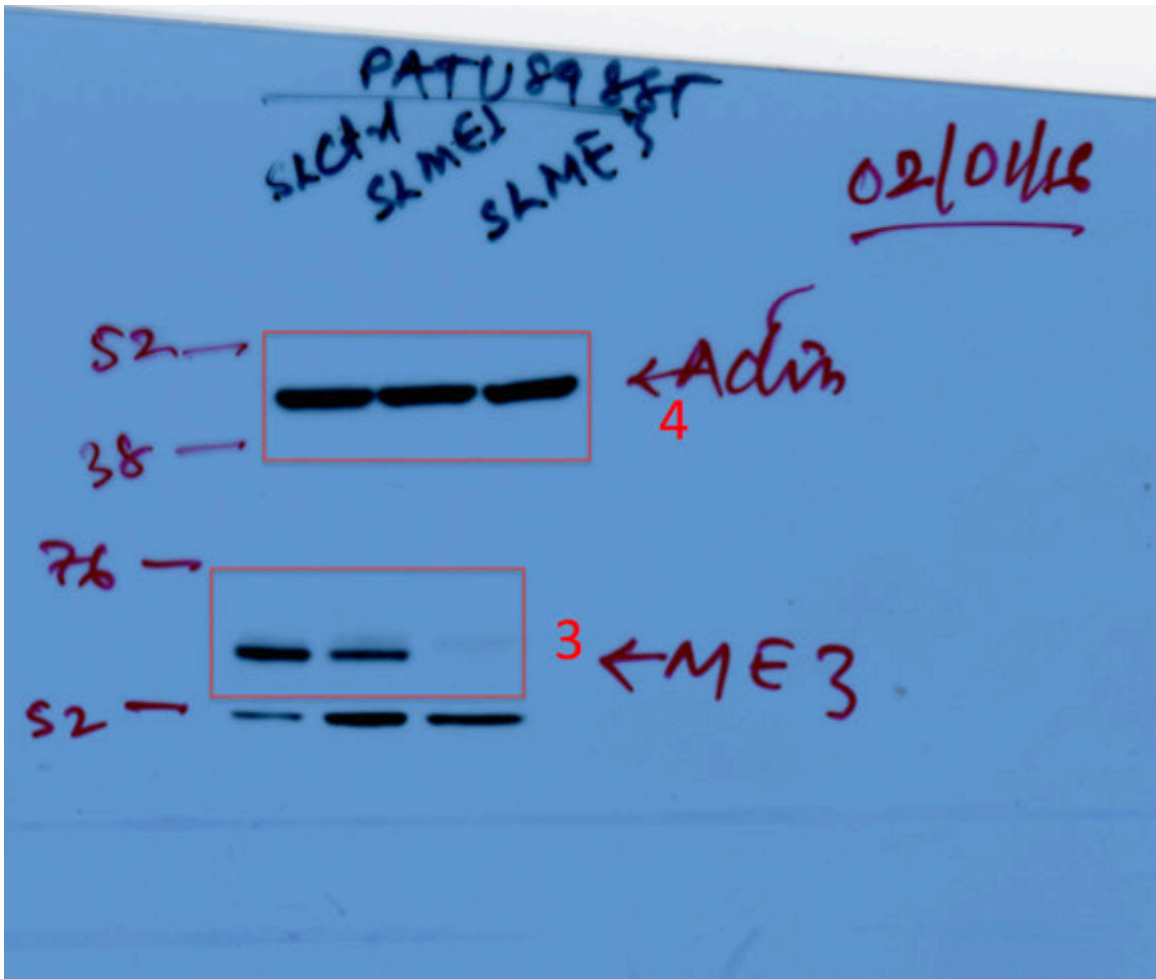
Supplementary Figure 19: Un-cropped immunoblot scans for **Extended Fig 8d**. Raw film scans with red box indicating the area shown in the display. Numbers in red indicates the panel (numbered from top to down) in the figure.

Supplementary Figure 20



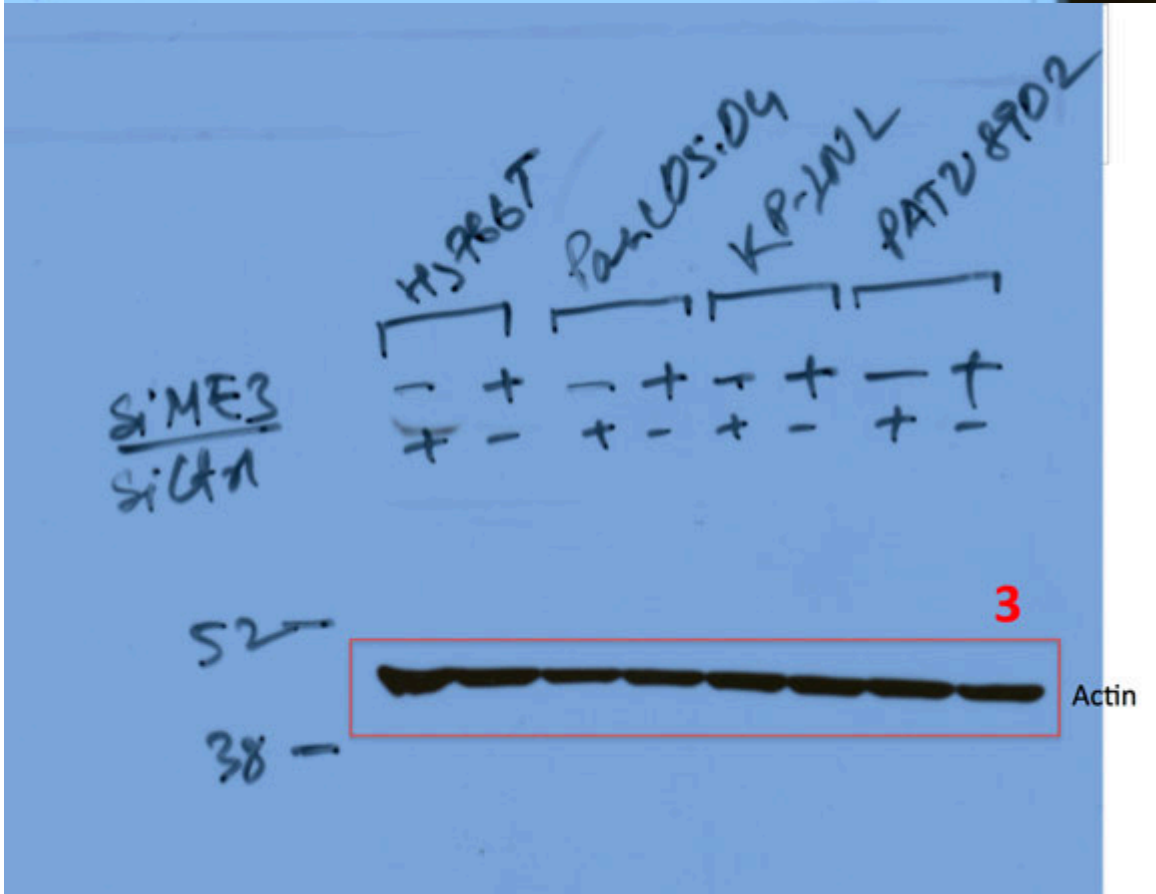
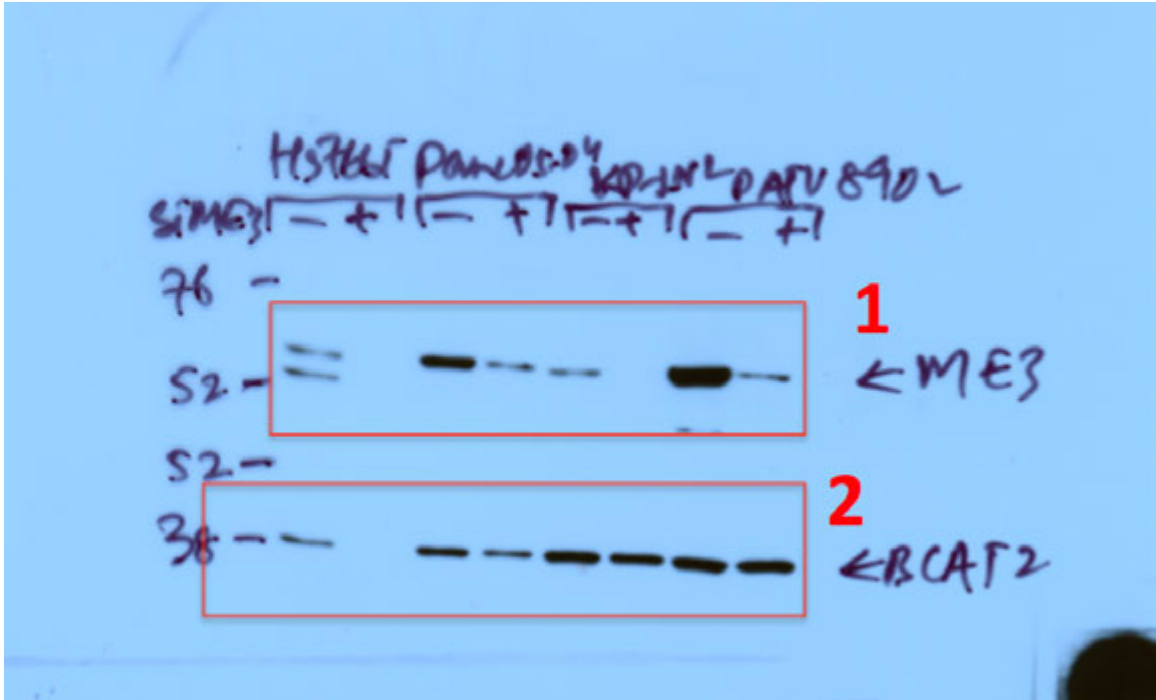
S2M
S2ME1
S2ME2



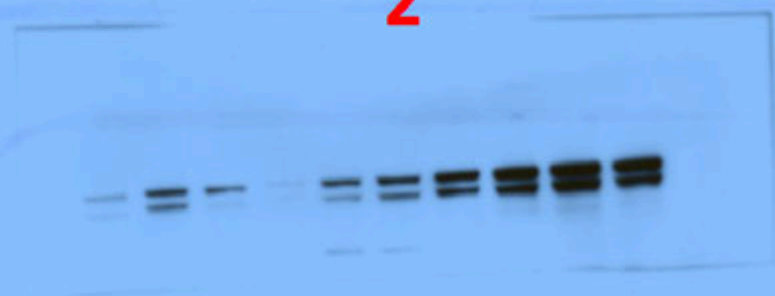
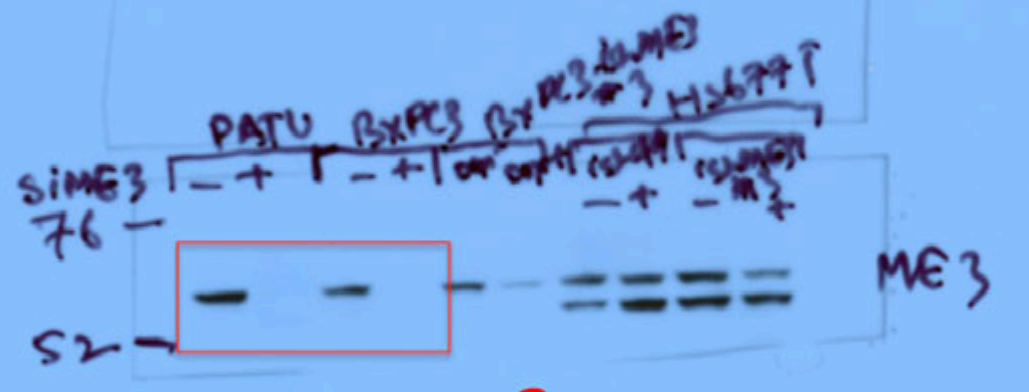
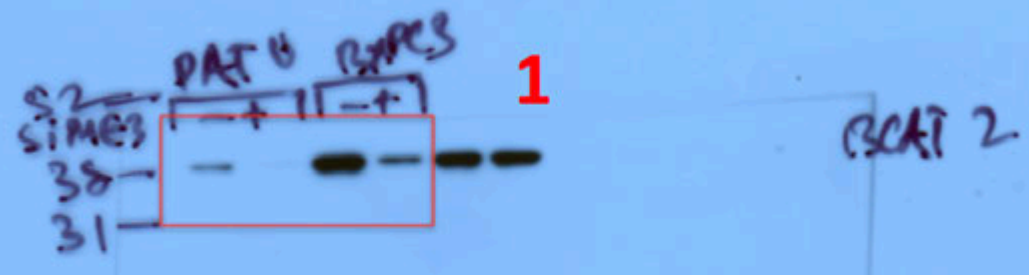


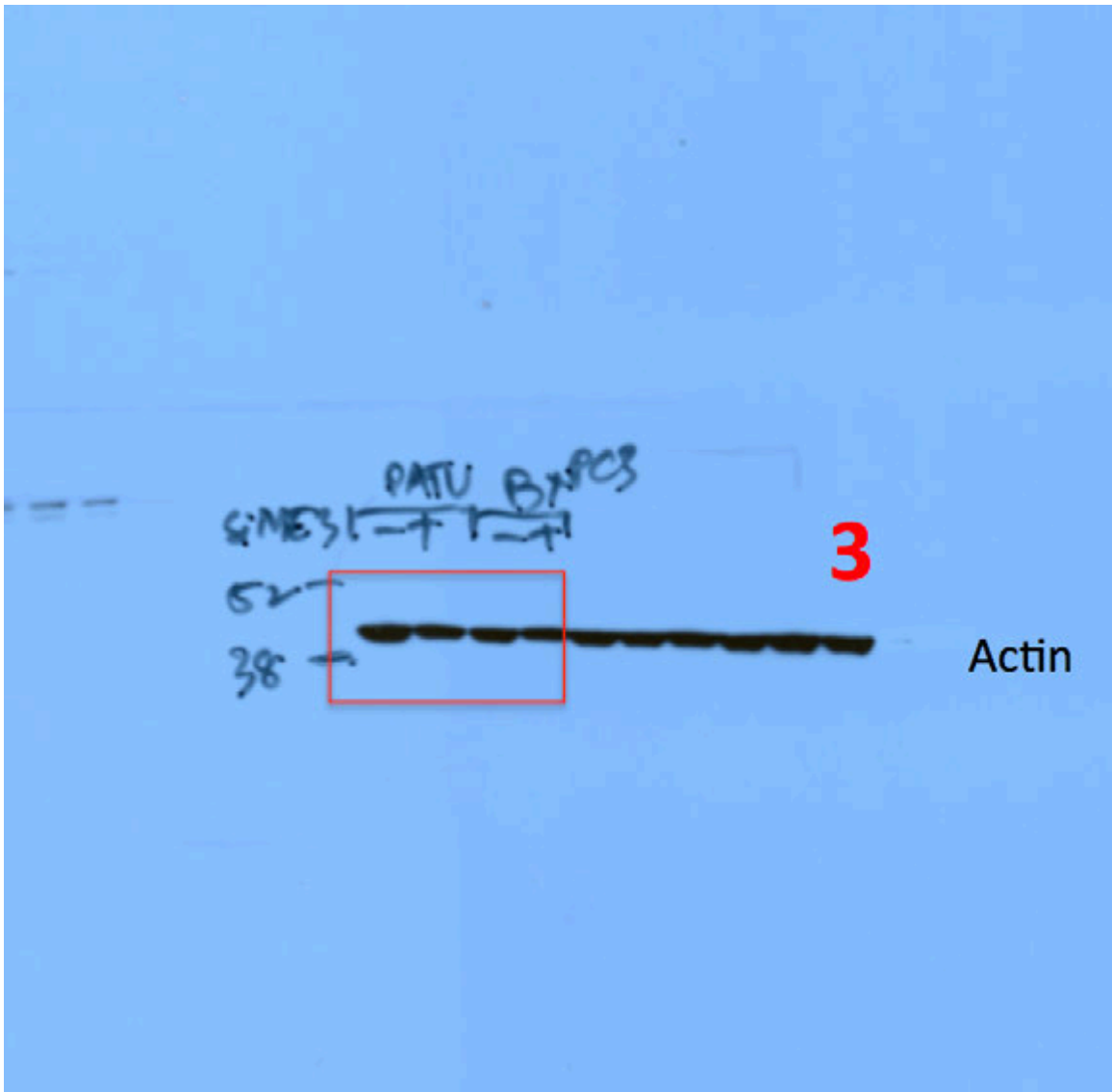
Supplementary Figure 20: Un-cropped immunoblot scans for **Extended Fig 8e**. Raw film scans with red box indicating the area shown in the display. Numbers in red indicates the panel (numbered from top to down) in the figure.

Supplementary Figure 21



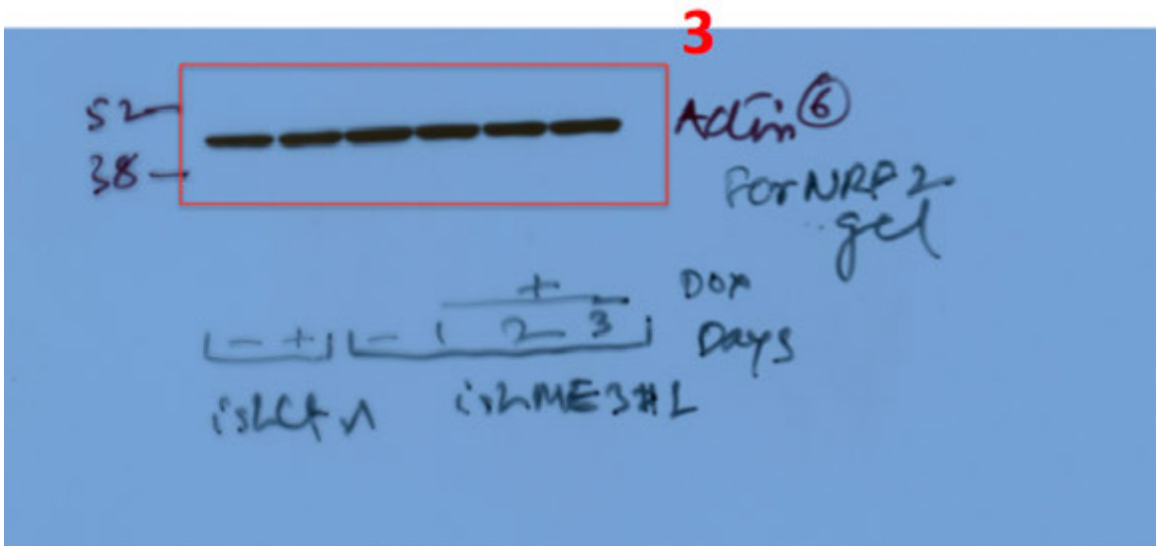
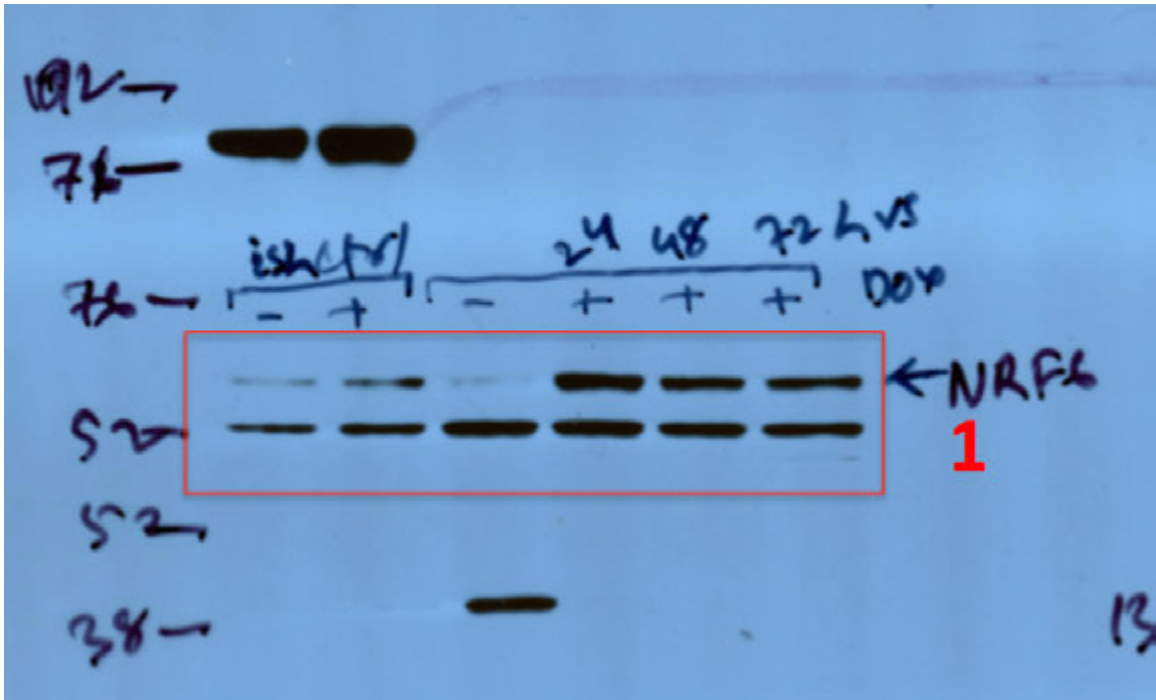
DIAGNOSIS SIMe3 pool

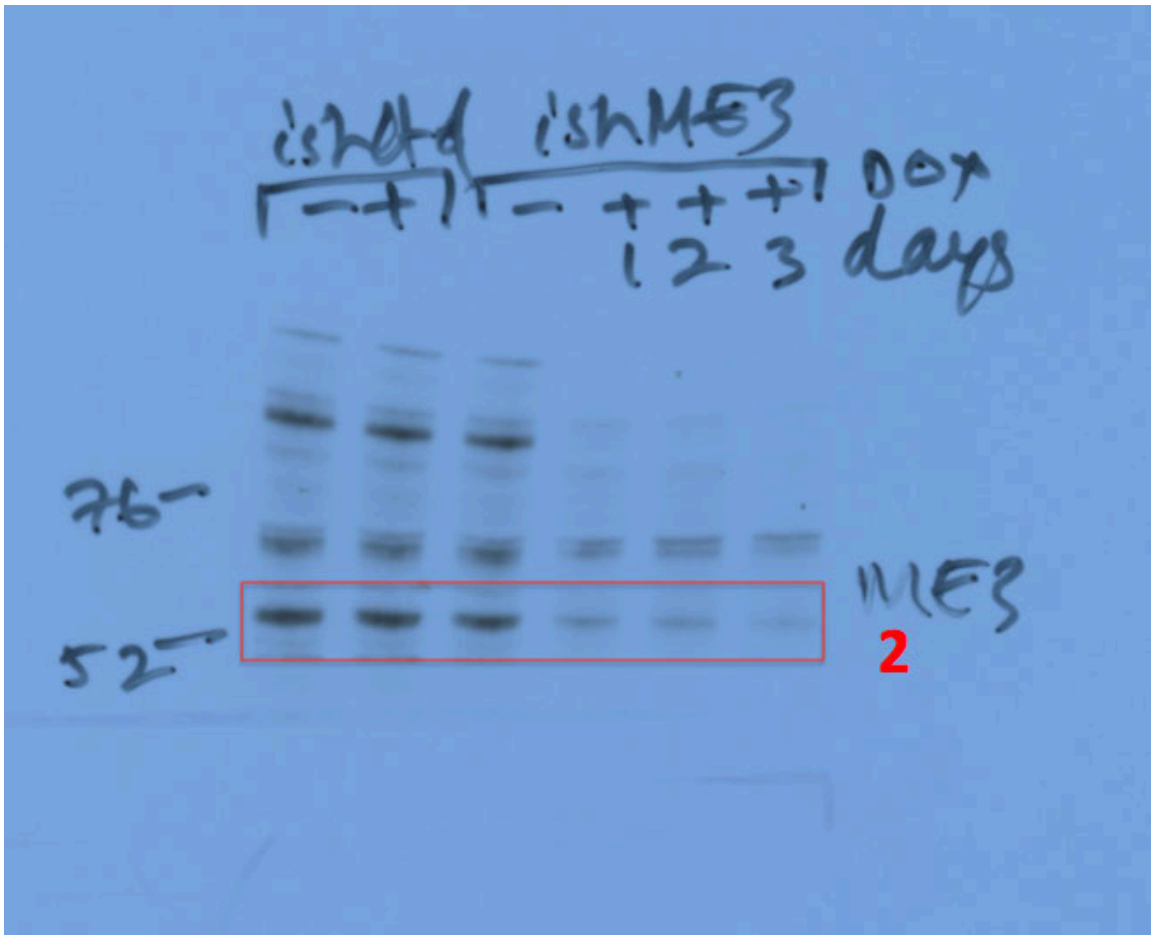




Supplementary Figure 21: Un-cropped immunoblot scans for **Extended Fig 8f**. Raw film scans with red box indicating the area shown in the display. Numbers in red indicates the panel (numbered from top to down) in the figure.

Supplementary Figure 22

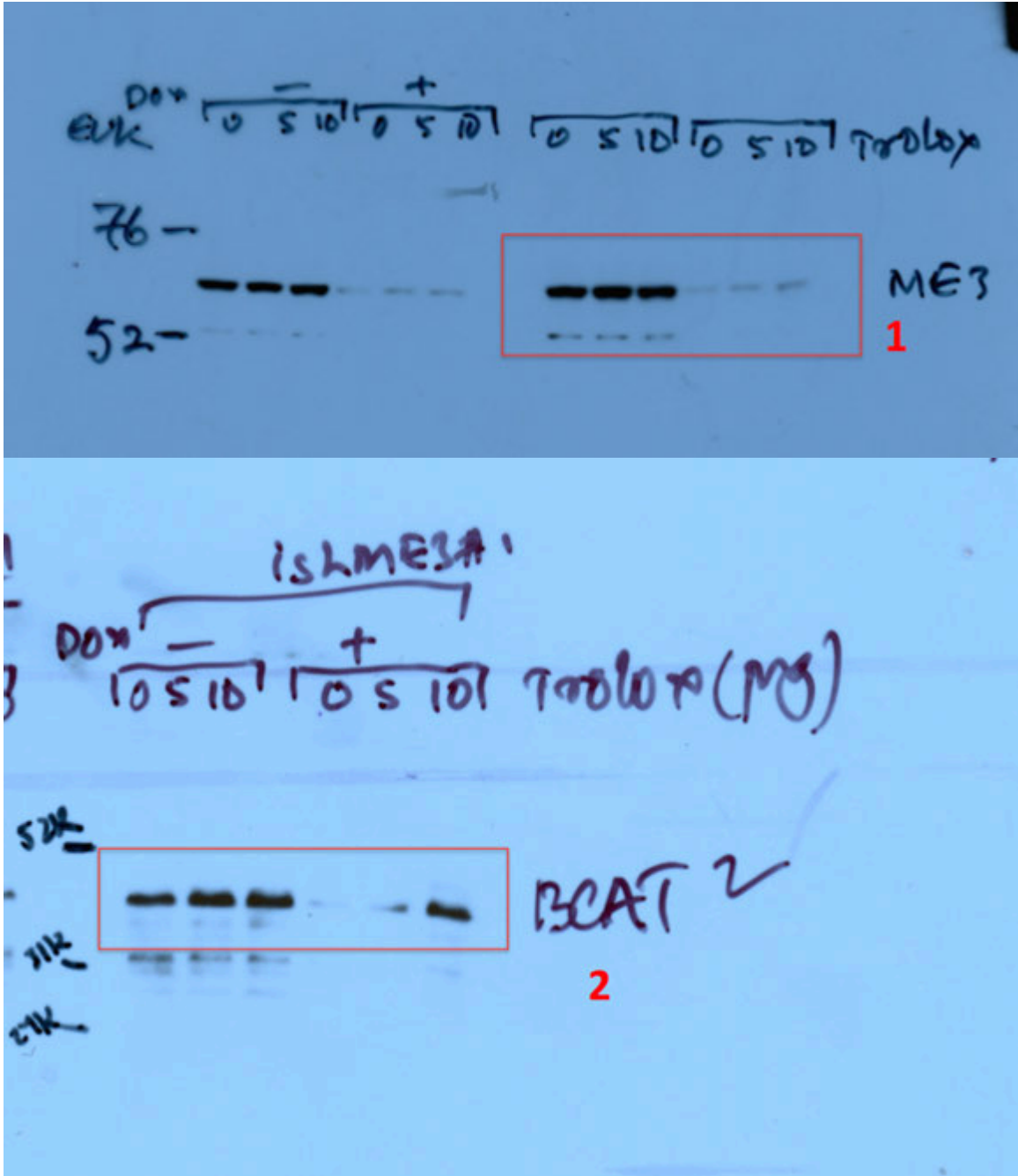




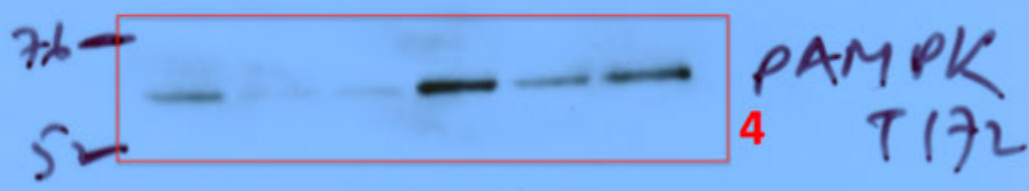
Supplementary Figure 22: Un-cropped immunoblot scans for **Extended Fig 8g**.

Raw film scans with red box indicating the area shown in the display. Numbers in red indicates the panel (numbered from top to down) in the figure.

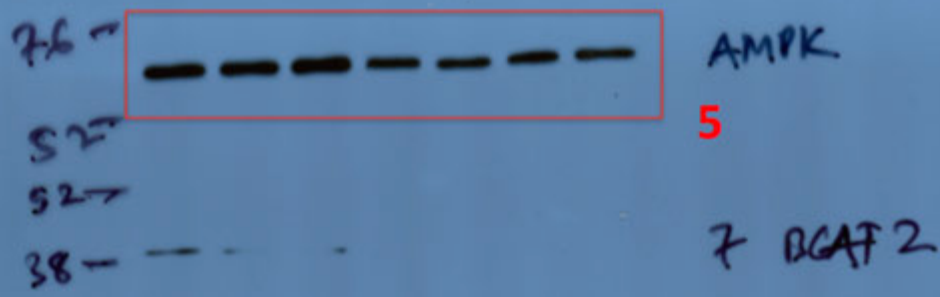
Supplementary Figure 23

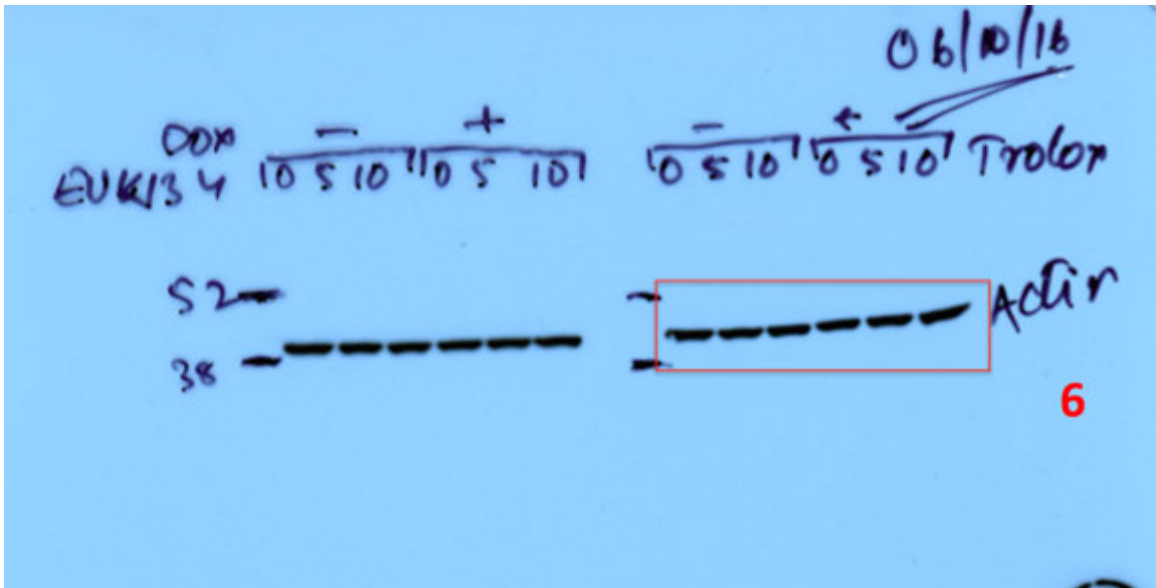


-DDP +DDP
| 0 5 10 | | 0 5 10 | | Total



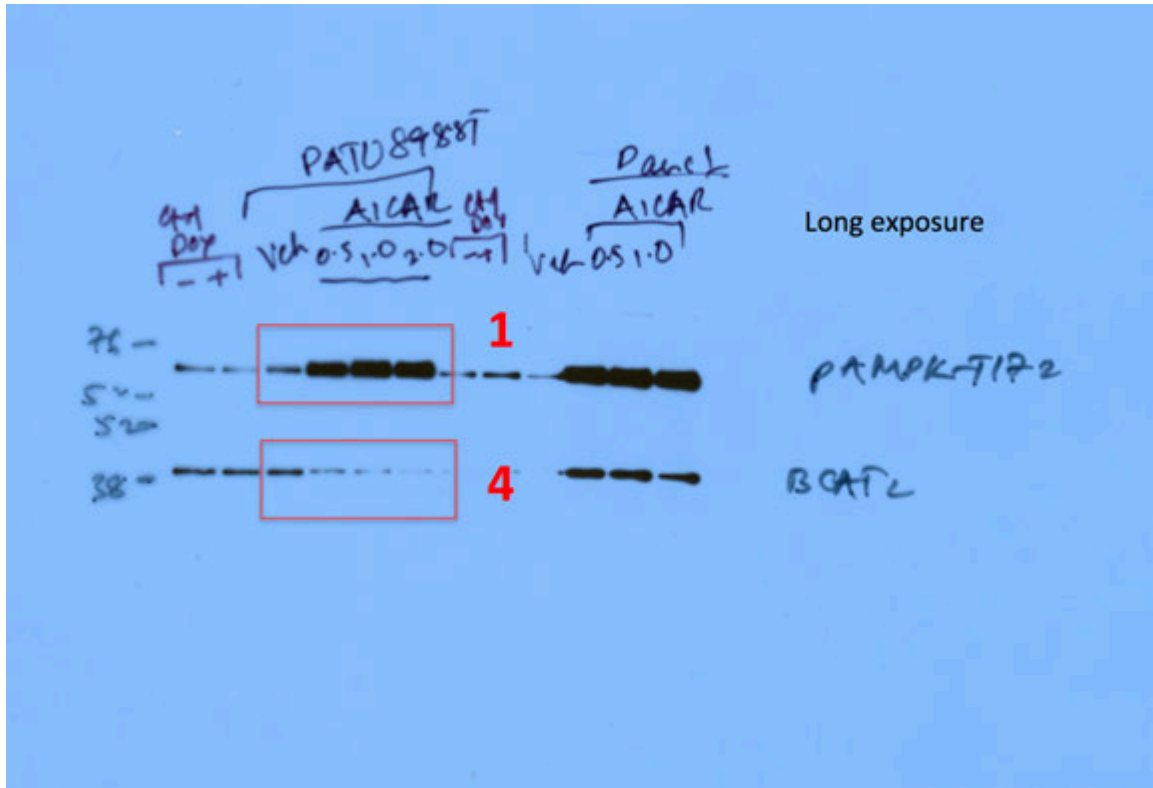
- +
| 0 5 10^{NI} | | 0 5 10 20^{NI} | | Total



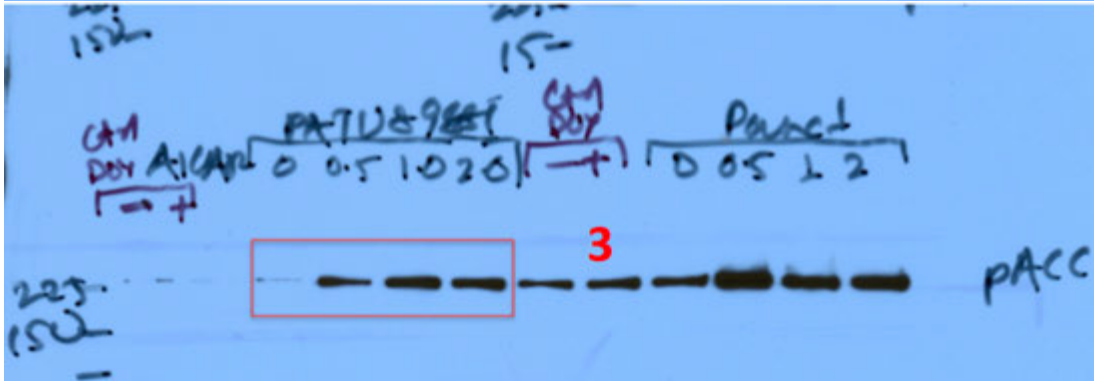
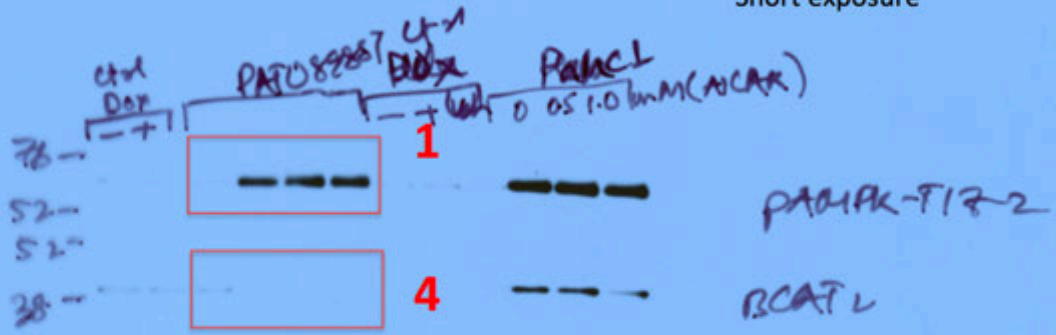


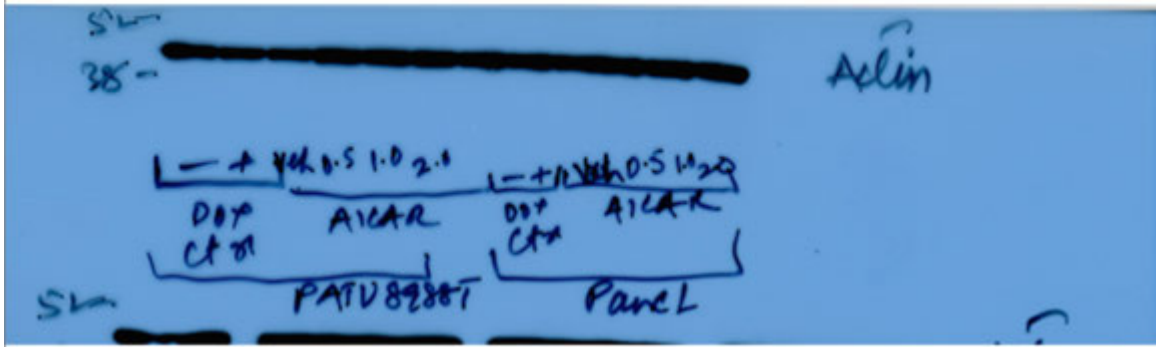
Supplementary Figure 23: Un-cropped immunoblot scans for **Extended Fig 9c**. Raw film scans with red box indicating the area shown in the display. Numbers in red indicates the panel (numbered from top to down) in the figure.

Supplementary Figure 24



Short exposure





Supplementary Figure 24: Un-cropped immunoblot scans for **Extended Fig 9d**. Raw film scans with red box indicating the area shown in the display. Numbers in red indicates the panel (numbered from top to down) in the figure.