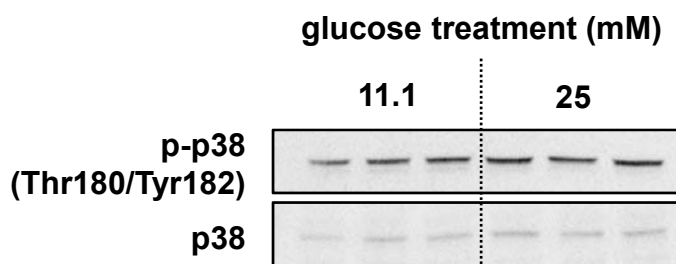
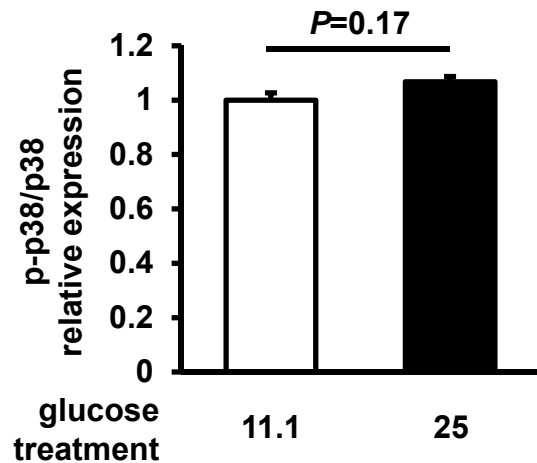


A**B**

S1 Figure. Phosphorylation status of p38. InR1G cells were exposed to regular (11.1 mM, white) or high (25 mM, black) glucose levels for 12 h. (A) Phospho-(p)p38 and p38 levels. (B) Relative expression of p-p38 was determined using densitometry and normalized using total p38 levels. $n=3$ in each group. Data are expressed as mean \pm SEM.