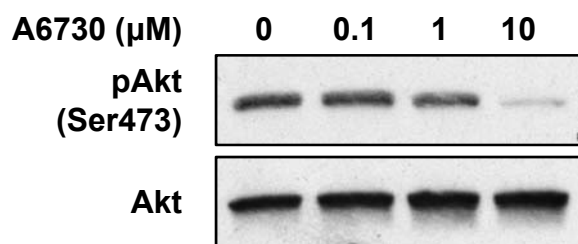
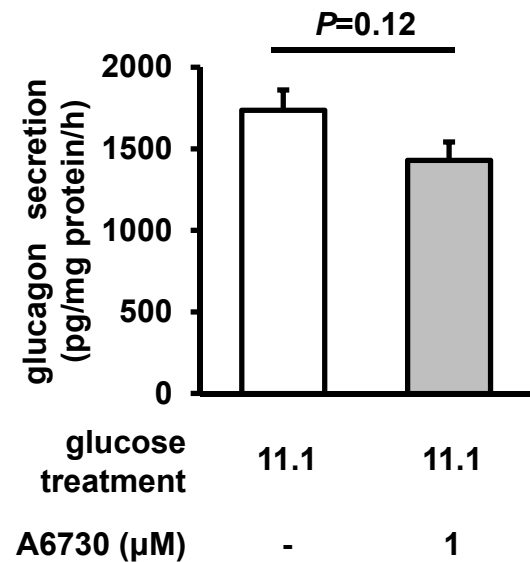


A**B**

S2 Figure. Effects of Akt inhibition on InR1G glucagon secretion. Cells were cultured with A6730 (Sigma-Aldrich, U.S.A.) in indicated concentrations for 12 h. **(A)** Akt and pAkt levels. **(B)** Glucagon secretion in cells treated without (white) or with 1 μM A6730 (gray) for 12 h before the static incubation with 25 mM glucose. $n=3-4$ in each group; data are expressed as mean \pm SEM.