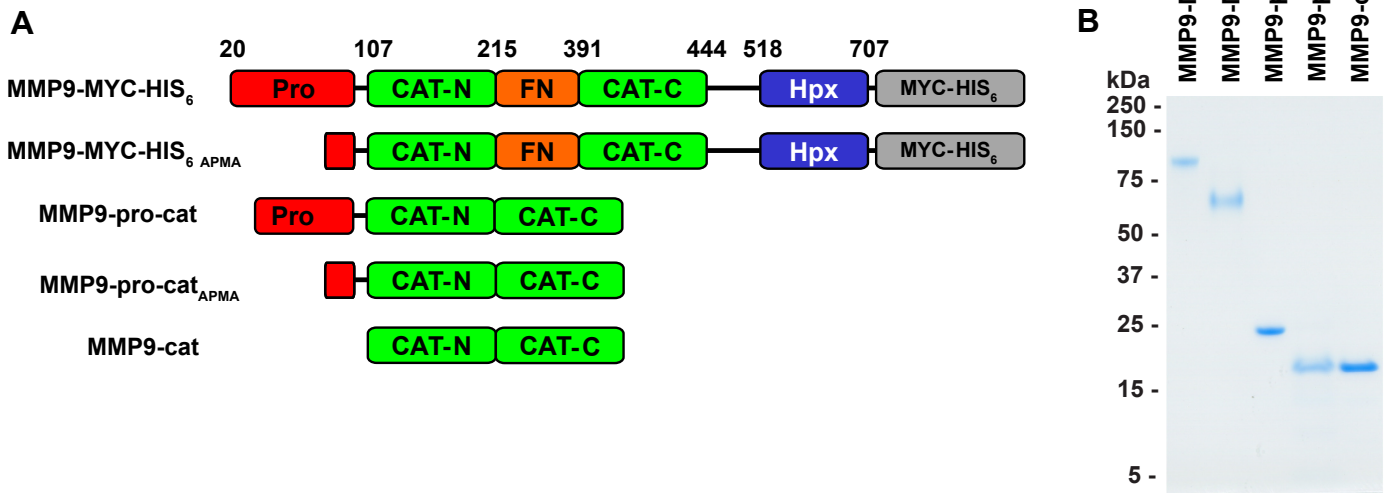
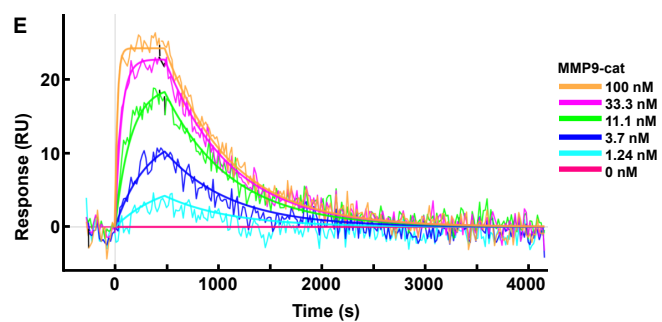
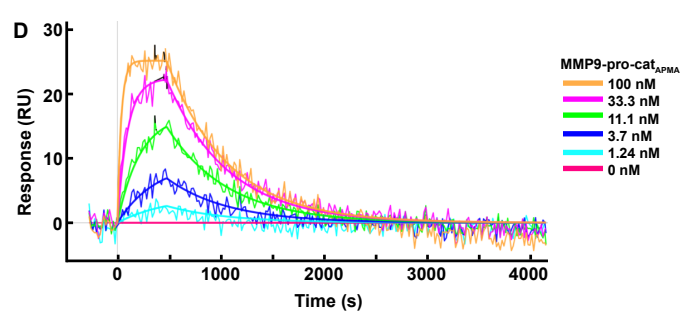
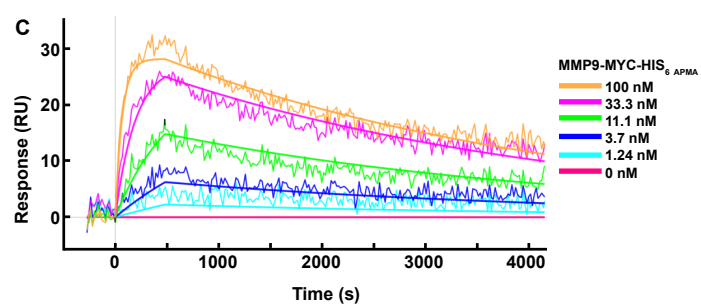
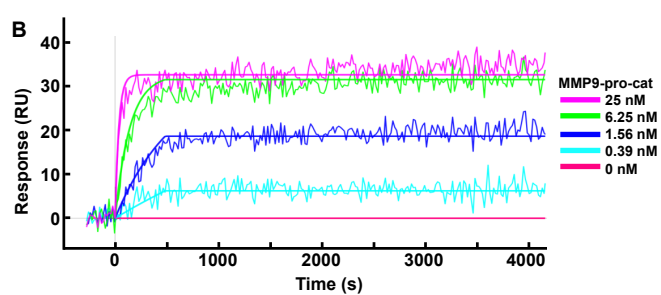
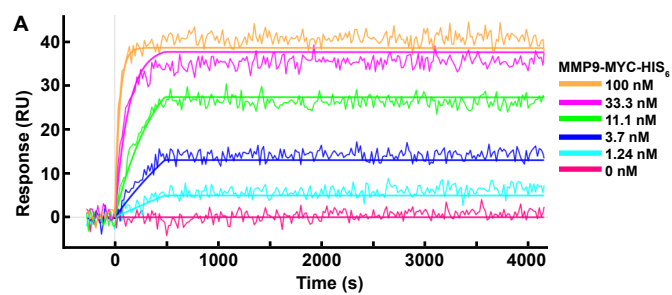


Supplementary Figure 1



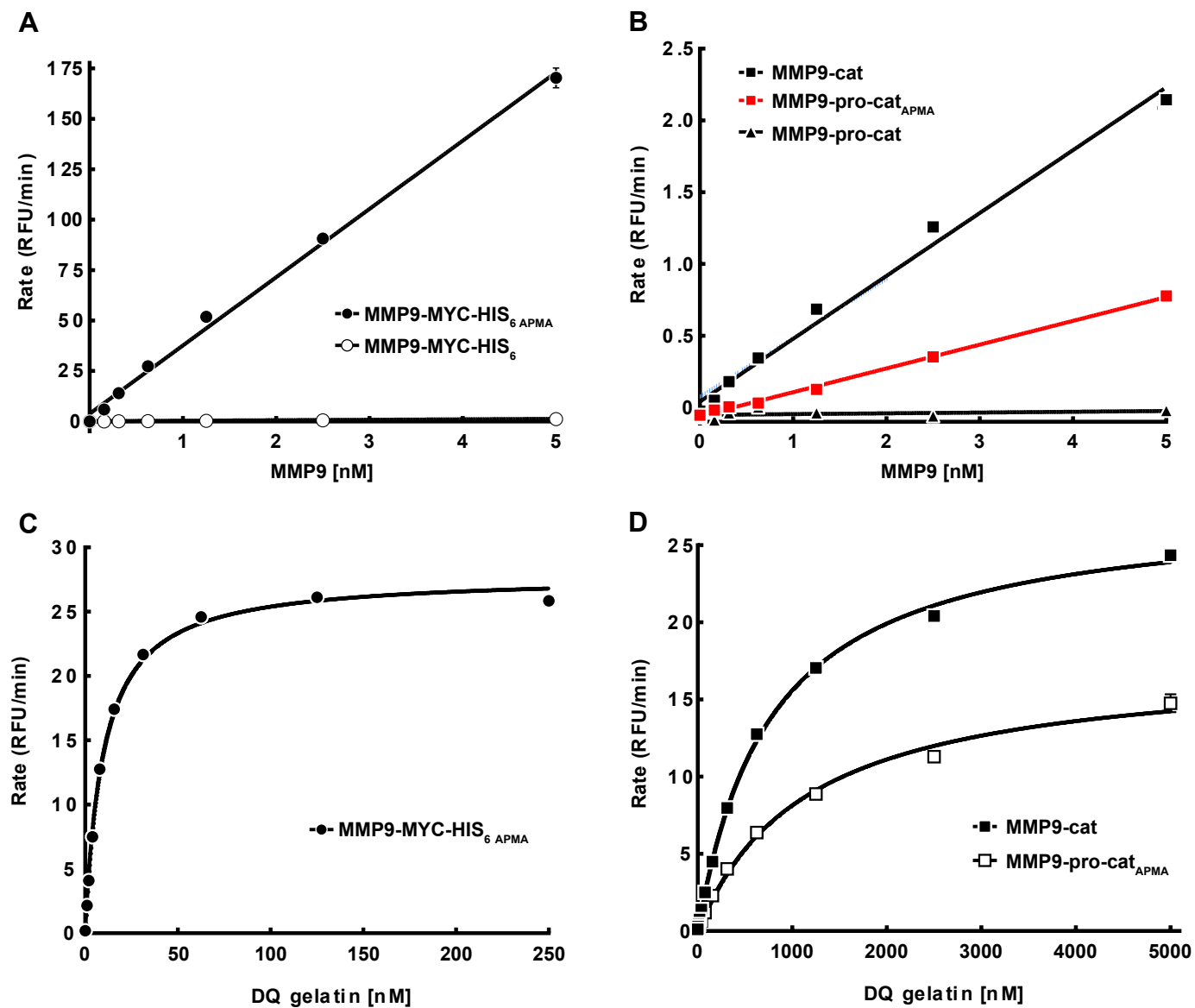
Supplementary Figure 2



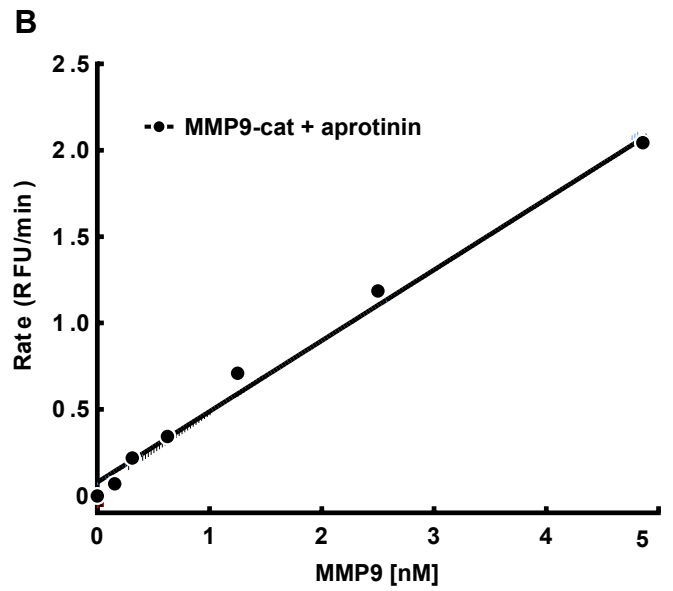
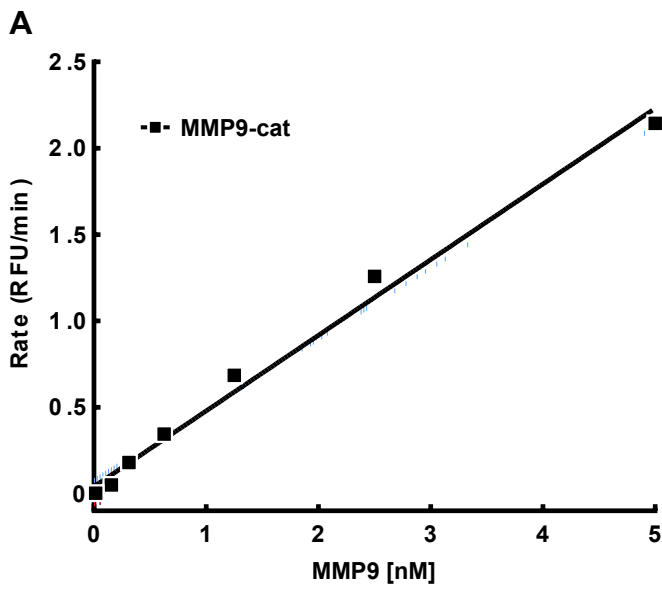
F

	k_{on} ($M^{-1}s^{-1}$)	k_{off} (s^{-1})
MMP9-MYC-HIS ₆	$2.4 \times 10^5 \pm 0.2 \times 10^5$	$\leq 1 \times 10^{-5}$
MMP9-pro-cat	$1.2 \times 10^5 \pm 0.1 \times 10^6$	$\leq 1 \times 10^{-5}$
MMP9-MYC-HIS ₆ APMA	$1.6 \times 10^5 \pm 0.3 \times 10^4$	$3.1 \times 10^{-4} \pm 0.4 \times 10^{-4}$
MMP9-pro-cat _{APMA}	$3.6 \times 10^5 \pm 0.8 \times 10^5$	$2.3 \times 10^{-3} \pm 0.5 \times 10^{-3}$
MMP9-cat	$7.0 \times 10^5 \pm 2.1 \times 10^5$	$2.3 \times 10^{-3} \pm 0.8 \times 10^{-3}$

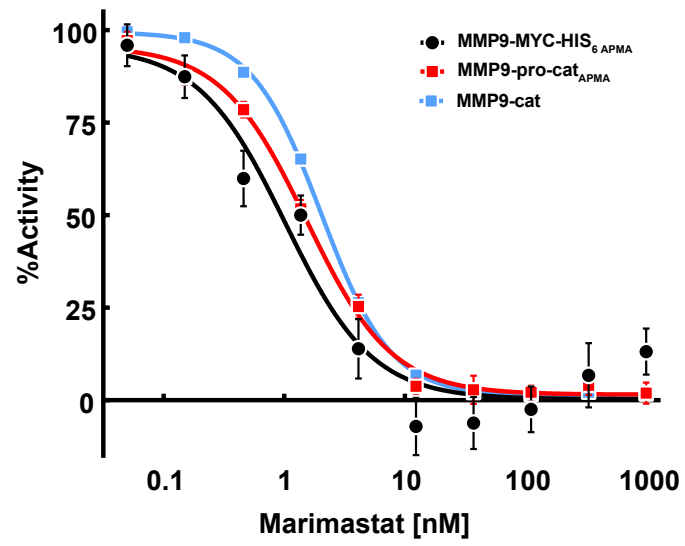
Supplementary Figure 3



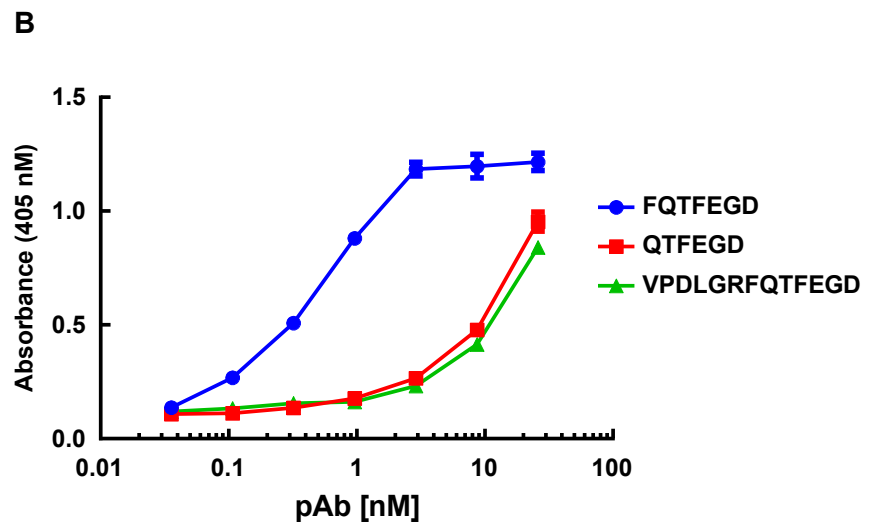
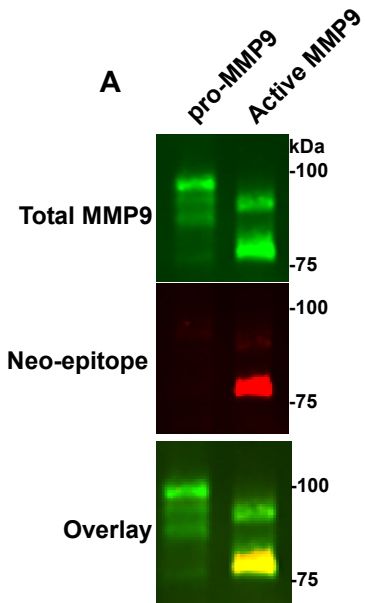
Supplementary Figure 4



Supplementary Figure 5



Supplementary Figure 6



Supplementary Figure 7

