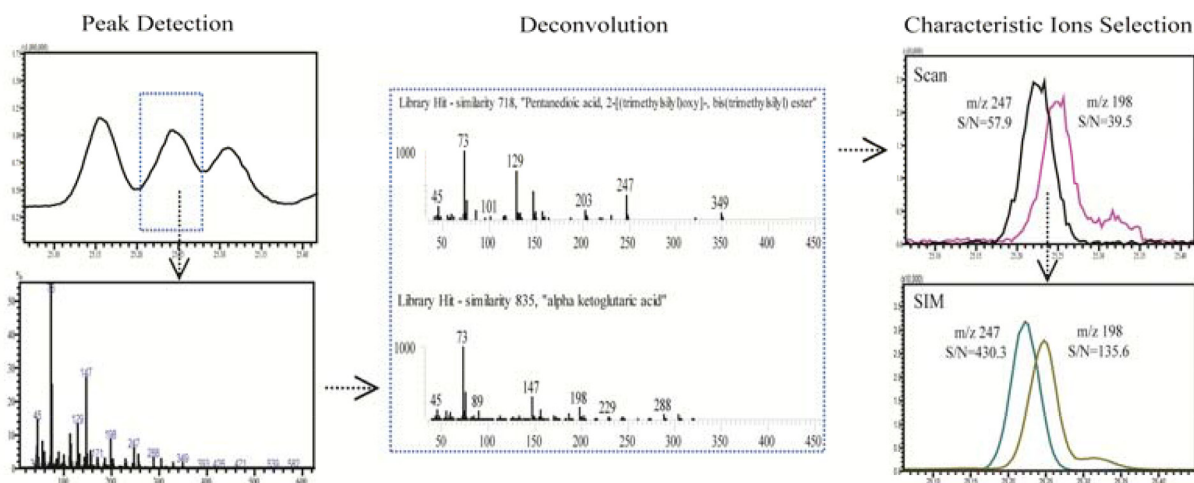
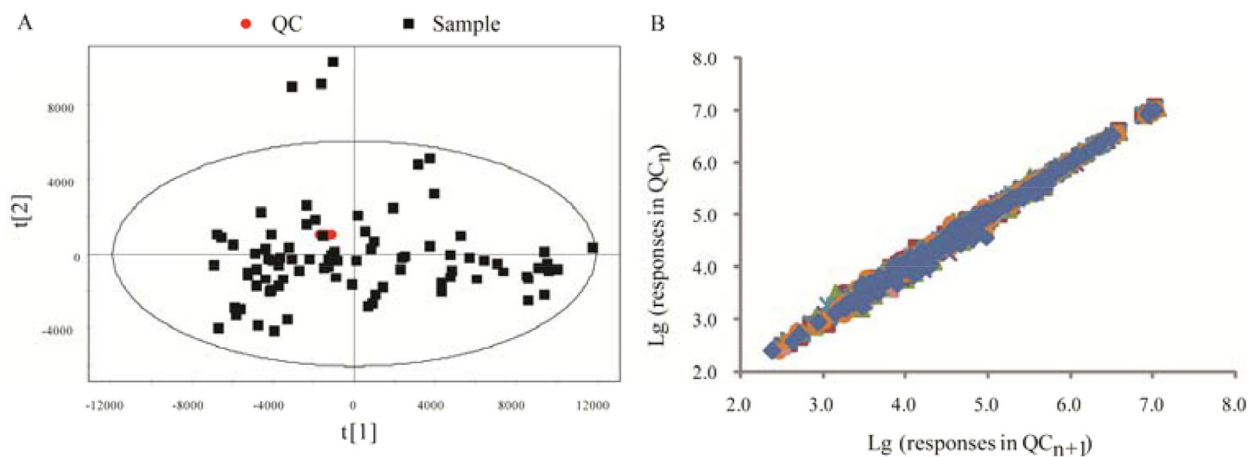


Discovery and validation of potential urinary biomarkers for bladder cancer diagnosis using a pseudotargeted GC-MS metabolomics method

Supplementary Materials



Supplementary Figure 1: An example of the characteristic ion selection.



Supplementary Figure 2: Quality monitoring of the entire analysis process. (A) PCA score scatter plots of the samples and QCs. (B) Scatter plots of the peaks in QC_n and QC_{n+1} (n = 1, 2, ..., 9).

Supplementary Table 1: Metabolites identified by the developed urinary pseudotargeted metabolomics method. See Supplementary_Table_1

Supplementary Table 2: Differential metabolites and related pathways in the discovery and external validation sets. See Supplementary_Table_2