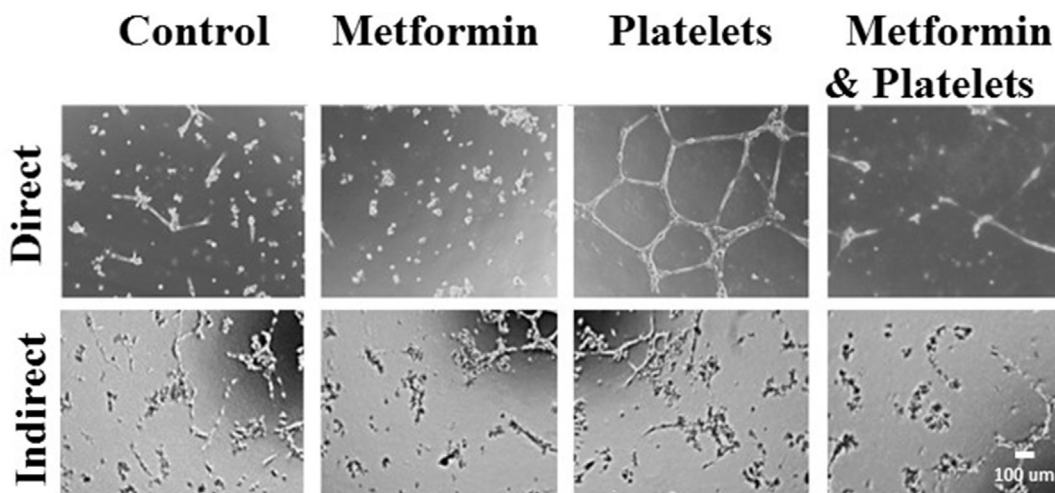


Diabetic concentrations of metformin inhibit platelet-mediated ovarian cancer cell progression

Supplementary Materials



Supplementary Figure 1: Platelets incubated at 37°C for 24 hours are not capable of increasing the formation of tubular structures in matrigel. (A) Direct: Endothelial cells (HUVEC) were seeded onto matrigel and incubated in the presence of vehicle (control), metformin (20 uM) platelets (150,000/ μ L) or metformin and platelets. (B) Indirect: HUVEC were seeded onto matrigel and incubated in the presence of culture media to which vehicle (control), metformin (20 uM) platelets (150,000/ μ L) or metformin and platelets had been previously added for 24 hrs at 37°C.