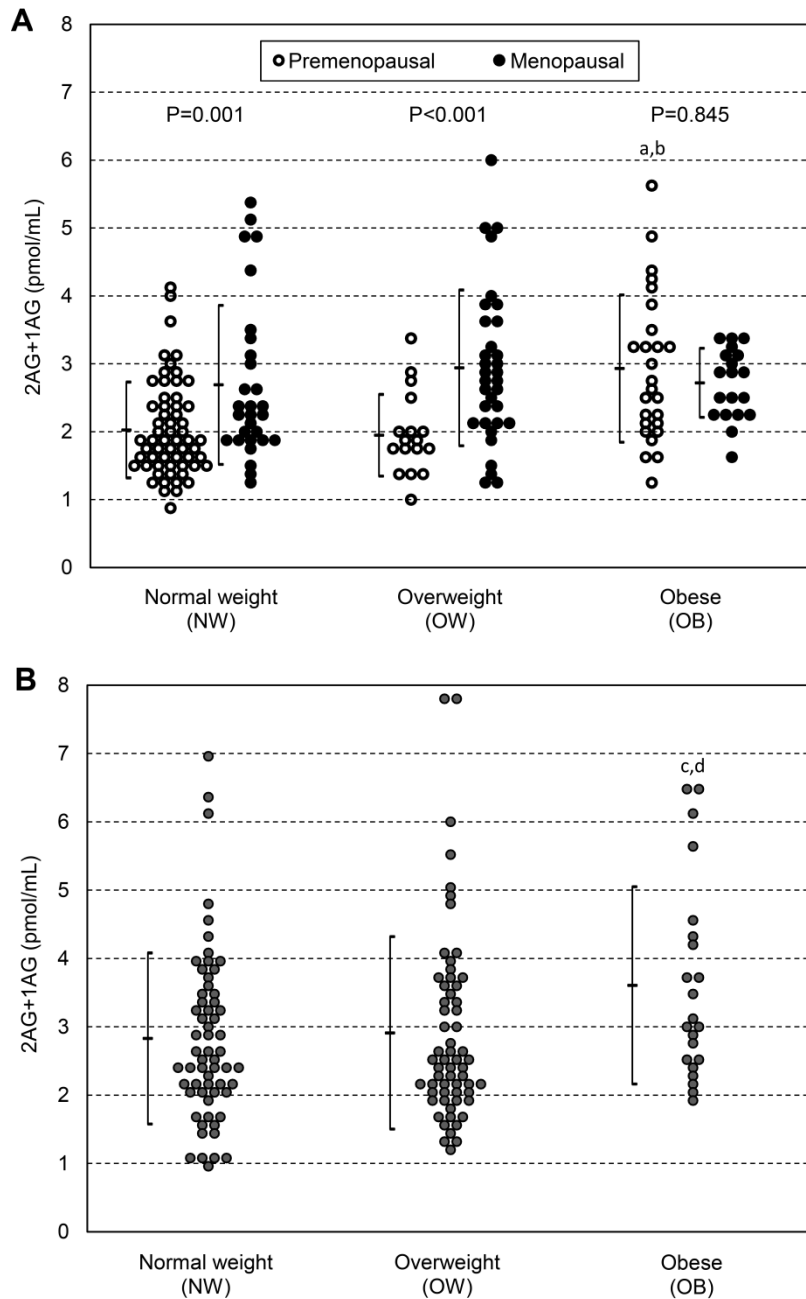


Supplemental Figure 1. Sum of 2-arachidonoylglycerol and 1-arachidonoylglycerol (2AG+1AG) levels (Mean \pm SD) according to body mass index in premenopausal and menopausal females (A) and in males (B) (Two-way ANOVA)



^a P<0.001: OB vs. NW premenopausal women; ^b P<0.001: OB vs. OW premenopausal women; ^c P=0.012: OB vs. NW men; ^d P=0.038: OB vs. OW men. No significant differences were found by comparing pairs of BMI classes within menopausal women (OW vs. NW: P=0.299; OB vs. NW: P=0.446; OB vs. OW: P=0.890) and by comparing OW vs. NW premenopausal women (P=0.799), as well as no significant difference was found in OW vs. NW men (P=0.505).