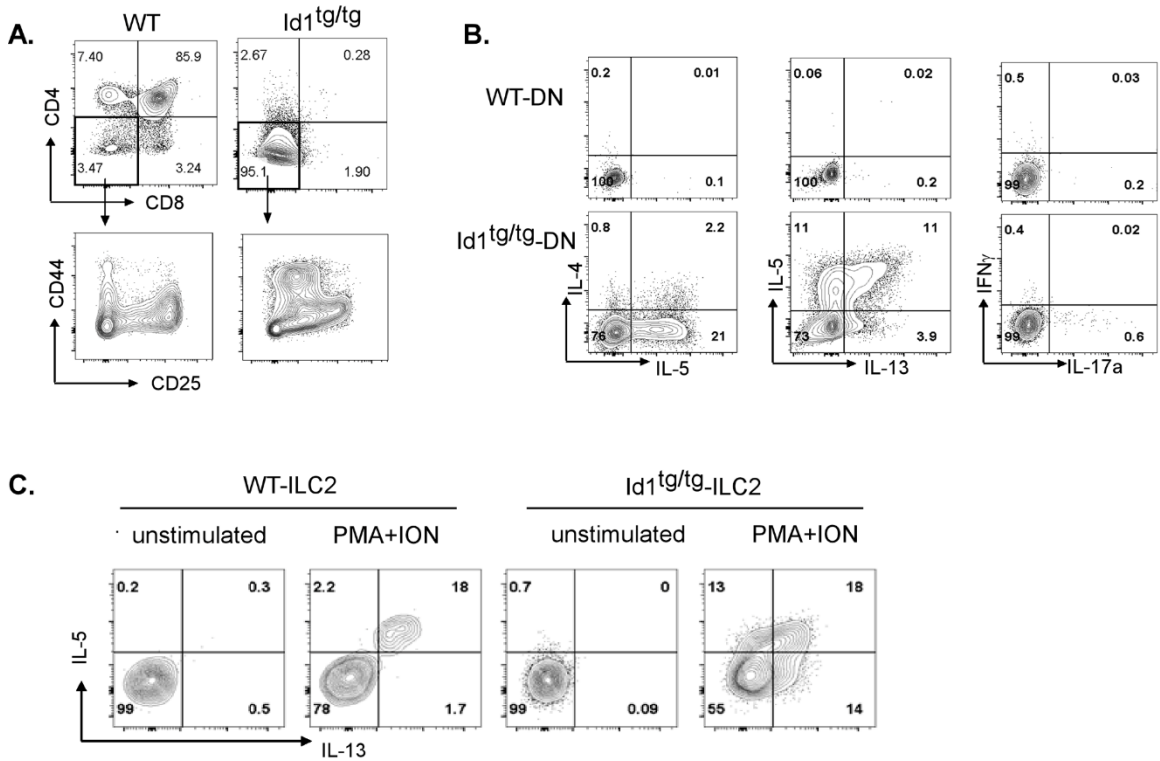
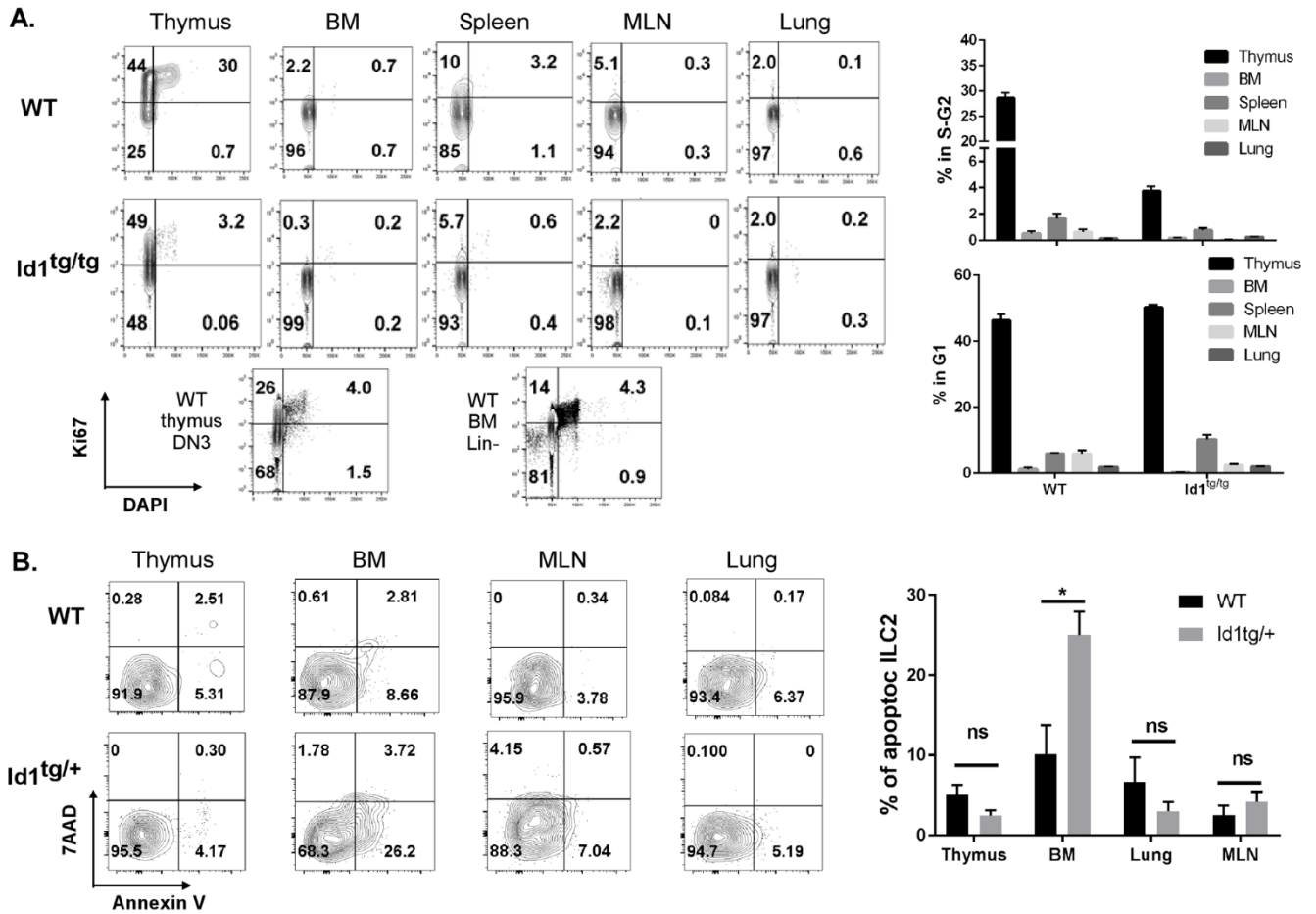


supplemental Figure 1



**Supplemental Figure 1. Id1 transgenic thymocytes are capable of producing type 2 cytokines.**

(A) The developmental profiles were determined by staining for CD4, CD8, CD44 and CD25 in thymocytes negative for B220, Mac-1, Gr-1, TCR $\gamma\delta$  and NK1.1. The CD4 and CD8 double negative subset was further analyzed for CD44 and CD25 expression. (B) Total thymocytes from WT and Id1<sup>tg/tg</sup> mice were stimulated with 500 ng/ml of ionomycin, 50 ng/ml PMA and monensin for 4 h. The CD4<sup>-</sup>CD8<sup>-</sup>B220<sup>-</sup>DX5<sup>-</sup> fraction was analyzed for the expression of indicated cytokines after intracellular staining with the Cytofix/Cytoperm Kit (BD Biosciences). (C) IL-5 and IL-13 production by thymic ILC2s (Lin<sup>-</sup>Thy1<sup>+</sup>ST2<sup>+</sup>) after stimulated as in (B). Data are representative of two independent experiments.



## Supplemental Figure 2. Augmented ILC2 counts in Id1 transgenic ILC2s are not due to increased proliferation or survival

(A) ILC2s in indicated tissues of WT and Id1<sup>tg/tg</sup> mice were stained intracellularly for Ki67 and DAPI along with antibodies described for Fig. 2B. Lin<sup>-</sup>Thy1<sup>+</sup>ST2<sup>+</sup> cells were gated to analyze Ki67 and DAPI fluorescence. Analyses of WT DN3 thymocytes and Lin<sup>-</sup> bone marrow cells served as controls for cycling cells. Numbers show the percentage in each quadrant. Ki67<sup>+</sup>DAPI<sup>+</sup> cells are considered to be in S-G2 phases of the cell cycle whereas Ki67<sup>+</sup>DAPI<sup>-</sup> mark cells in the G1 phase. Average percentages are shown in the bar graphs (n=3). Data are representative of two independent experiments. (B) ILC2s in indicated tissues of WT and Id1<sup>tg</sup> mice were stained with Annexin V and 7AAD along with antibodies described for Fig. 2B. Annexin-V<sup>+</sup>7AAD<sup>-</sup> cells are considered apoptotic. Average percentages are shown in the bar graphs (n=3 or 4). Data are representative of two independent experiments. \* < 0.05.

**Supplemental Table 1 Lists of genes shown in Fig. 3B**

WT-ILC2	Id1_M1	Id1_M2	Id1_T1	Id1_T2	ThyDN3	ThyDN3	Gene
-0.3056	-0.3782	-0.5911	0.2702	0.2795	0.3561	0.3690	Pif1
-0.2213	-0.4805	-0.5614	0.2685	0.3293	0.2943	0.3712	Ska1
-0.1881	-0.5136	-0.5501	0.2769	0.2783	0.3213	0.3753	Troap
-0.1922	-0.5008	-0.5597	0.2914	0.2741	0.3061	0.3811	Top2a
-0.1998	-0.4994	-0.5585	0.2916	0.2824	0.3349	0.3488	Spag5
-0.2062	-0.4600	-0.5823	0.2607	0.2340	0.3785	0.3752	Clspn
-0.2341	-0.4727	-0.5515	0.2639	0.2362	0.3307	0.4276	Pbk
-0.2313	-0.4934	-0.5340	0.2479	0.2538	0.3257	0.4312	Ccna2
-0.2439	-0.5128	-0.5114	0.2631	0.2593	0.3454	0.4003	Shcbp1
-0.2129	-0.5258	-0.5212	0.2941	0.2450	0.3493	0.3715	Figl1
-0.2754	-0.5243	-0.4853	0.3099	0.3284	0.3032	0.3436	Neil3
-0.2699	-0.5448	-0.4654	0.3334	0.3180	0.2703	0.3584	Prr11
-0.3132	-0.5142	-0.4639	0.3296	0.3137	0.2724	0.3756	Rrm2
-0.2893	-0.4859	-0.5050	0.2881	0.2884	0.2767	0.4270	2810417H13Rik
-0.2891	-0.4471	-0.5443	0.2949	0.2728	0.3075	0.4053	Ncapg
-0.3162	-0.4733	-0.4954	0.2654	0.2523	0.3497	0.4175	Espl1
-0.3098	-0.4610	-0.5123	0.2606	0.2570	0.3507	0.4149	Ncaph
-0.2808	-0.4879	-0.5129	0.2766	0.2791	0.3299	0.3960	Kif4
-0.2781	-0.4628	-0.5362	0.2665	0.2584	0.3610	0.3911	Cdc6
-0.3102	-0.5282	-0.4369	0.2339	0.2667	0.3240	0.4507	Cdca3
-0.3550	-0.4569	-0.4798	0.2721	0.3054	0.2773	0.4369	Nusap1
-0.4015	-0.3673	-0.5210	0.2521	0.2647	0.3810	0.3920	Matn2
-0.4072	-0.3774	-0.5131	0.2827	0.2977	0.3217	0.3956	Kif18b
-0.3821	-0.4084	-0.4988	0.2437	0.2611	0.3528	0.4317	Cdca5
-0.4204	-0.3982	-0.4755	0.2560	0.2646	0.3428	0.4307	Cdk1
-0.4484	-0.4268	-0.4301	0.3024	0.3005	0.3108	0.3917	Ttk
-0.4105	-0.4413	-0.4534	0.2988	0.2846	0.3456	0.3761	Bub1
-0.4348	-0.4348	-0.4348	0.2787	0.2927	0.3449	0.3881	Hnf4a
-0.4434	-0.4345	-0.4172	0.2491	0.2601	0.3615	0.4244	Aurkb
-0.4460	-0.4314	-0.4185	0.2466	0.2642	0.3705	0.4146	Nek2
-0.4222	-0.4350	-0.4437	0.2700	0.2687	0.3755	0.3867	Cenpf
-0.3983	-0.4229	-0.4771	0.2790	0.2552	0.3808	0.3833	Mcoln3
-0.3756	-0.4789	-0.4444	0.2815	0.2748	0.3438	0.3989	Ckap2l
-0.3962	-0.4455	-0.4538	0.2442	0.2916	0.3275	0.4321	F630043A04Rik
-0.4088	-0.4634	-0.4341	0.3230	0.3456	0.2831	0.3546	Gm11223
-0.4381	-0.4381	-0.4308	0.3150	0.3706	0.2911	0.3304	Tmem40
-0.4020	-0.4410	-0.4643	0.3447	0.3399	0.3076	0.3151	E2f7
-0.4360	-0.4360	-0.4360	0.3521	0.3479	0.3067	0.3011	2010110K18Rik
-0.4361	-0.4361	-0.4361	0.3502	0.3315	0.2936	0.3329	Gbx2

-0.4649	-0.3619	-0.4649	0.3257	0.3974	0.2102	0.3586	Gm11832
-0.1676	-0.5985	-0.4642	0.2356	0.2513	0.3321	0.4114	Fam64a
-0.1376	-0.5519	-0.5408	0.2702	0.2987	0.2918	0.3696	Birc5
-0.1482	-0.5752	-0.5094	0.3141	0.2840	0.2593	0.3756	Hmmr
-0.1681	-0.5609	-0.5150	0.3028	0.2725	0.2984	0.3702	Casc5
-0.1315	-0.5322	-0.5656	0.3044	0.2919	0.2904	0.3426	Esco2
-0.1448	-0.5215	-0.5683	0.3180	0.2988	0.2710	0.3468	Cep55
-0.0971	-0.5368	-0.5780	0.3117	0.2783	0.3233	0.2986	Mki67
-0.0735	-0.5683	-0.5571	0.2969	0.2752	0.2916	0.3352	Cenpe
-0.0876	-0.4803	-0.6226	0.2431	0.2546	0.2757	0.4172	Ube2c
-0.0741	-0.5304	-0.5900	0.2648	0.2580	0.2987	0.3730	Kif11
-0.0771	-0.5115	-0.6016	0.2390	0.2286	0.3583	0.3643	Aspm
-0.1474	-0.5131	-0.5733	0.2868	0.2592	0.3307	0.3571	Stil
-0.1323	-0.4847	-0.6068	0.2846	0.2606	0.3266	0.3519	Sgol1
-0.1253	-0.5096	-0.5818	0.2555	0.2387	0.3241	0.3985	Kif15
-0.1523	-0.5065	-0.5686	0.2458	0.2446	0.3178	0.4192	Spc25
-0.0520	-0.5490	-0.5663	0.1955	0.2062	0.3562	0.4094	E2f2
-0.0823	-0.5393	-0.5568	0.2099	0.1697	0.3851	0.4137	Mcm10
-0.0735	-0.5758	-0.5363	0.2283	0.2152	0.3436	0.3987	Rad51
-0.0324	-0.5103	-0.6084	0.2112	0.1753	0.3640	0.4007	5730590G19Rik
-0.1001	-0.6459	-0.4369	0.2340	0.2489	0.4505	0.2496	Spns2
0.0303	-0.6237	-0.5361	0.2858	0.2586	0.2538	0.3313	E2f8
0.0076	-0.6112	-0.5409	0.3219	0.2242	0.2770	0.3213	Muc13
0.0064	-0.6704	-0.4729	0.2576	0.2507	0.3061	0.3224	Mastl
0.0187	-0.5805	-0.5699	0.3047	0.3167	0.1696	0.3406	Cenpk
0.0961	-0.5543	-0.6168	0.2145	0.2142	0.2893	0.3571	BC030867
0.0865	-0.5716	-0.5995	0.2341	0.2117	0.2833	0.3555	Kif14
0.0412	-0.5131	-0.6356	0.2269	0.1889	0.2982	0.3936	Chek1
0.1273	-0.5229	-0.6453	0.2167	0.1581	0.3213	0.3447	Kntc1
0.0903	-0.5473	-0.6099	0.1945	0.1541	0.3389	0.3794	Dtl
0.1357	-0.5893	-0.5890	0.1970	0.2210	0.2645	0.3601	Ccnb2
0.1502	-0.5901	-0.5836	0.1639	0.2330	0.2389	0.3878	Cks1b
-0.1212	-0.3561	-0.7056	0.2982	0.2539	0.3797	0.2512	Gm17356
-0.1692	-0.5141	-0.5560	0.3206	0.3399	0.3674	0.2113	2810442I21Rik
-0.2273	-0.4942	-0.4898	0.1660	0.1291	0.4440	0.4721	Blk
-0.1382	-0.5490	-0.4717	0.1161	0.1158	0.4491	0.4779	Syt13
-0.1577	-0.5085	-0.5085	0.1297	0.1420	0.5326	0.3705	Gm11579
-0.1279	-0.6024	-0.3610	0.0756	0.0328	0.4741	0.5088	Tspan2
0.0603	-0.5042	-0.5769	0.0707	0.0546	0.4633	0.4321	Gria3
0.0218	-0.4642	-0.5804	0.0658	0.0163	0.4610	0.4796	Angptl2
-0.1075	-0.4121	-0.6132	0.0789	0.1453	0.4881	0.4206	Ddc

-0.5000	-0.3690	-0.3823	0.1867	0.1634	0.4489	0.4523	Myb
-0.4945	-0.3576	-0.3537	0.1350	0.0981	0.4593	0.5135	Tmem121
-0.4497	-0.3240	-0.4467	0.1563	0.1111	0.5098	0.4432	Rab44
-0.4465	-0.3309	-0.4465	0.1810	0.0945	0.4865	0.4619	Ybx2
-0.5344	-0.2535	-0.3969	0.1128	0.1034	0.4944	0.4741	Endou
-0.4078	-0.4078	-0.4078	0.1386	0.1179	0.4668	0.5001	BC048355
-0.4148	-0.4148	-0.4148	0.1752	0.1369	0.4688	0.4634	Fads2
-0.4151	-0.4141	-0.4276	0.1885	0.1616	0.4356	0.4712	Gm5648
-0.3557	-0.4248	-0.4762	0.1918	0.1697	0.4386	0.4565	Uhrf1
-0.3978	-0.3967	-0.4592	0.1831	0.1662	0.4118	0.4927	Clec12a
-0.4224	-0.4224	-0.4224	0.2356	0.1561	0.4680	0.4073	Prtg
-0.5003	-0.5003	-0.2836	0.3049	0.2649	0.3395	0.3749	Pcyt1b
-0.4674	-0.4674	-0.3456	0.2366	0.2206	0.4135	0.4098	Dmwd
-0.4741	-0.4741	-0.2877	0.1942	0.1343	0.4627	0.4447	Gm10384
-0.4791	-0.3316	-0.4735	0.2399	0.2900	0.4484	0.3059	S1pr3
-0.4617	-0.4617	-0.3629	0.2563	0.2931	0.4657	0.2711	Hist1h2bj
-0.5674	-0.3239	-0.3847	0.2465	0.2712	0.3387	0.4196	2010317E24Rik
-0.5860	-0.3110	-0.3796	0.3025	0.2732	0.3052	0.3957	Lrr1
-0.5081	-0.3729	-0.4204	0.3053	0.3008	0.3306	0.3648	Nuf2
-0.5062	-0.2702	-0.5006	0.2597	0.2887	0.3200	0.4086	Gm6091
-0.5798	-0.3402	-0.3628	0.3366	0.3532	0.2604	0.3326	Depdc1b
-0.5753	-0.2940	-0.4131	0.3058	0.3222	0.3093	0.3449	Uchl1
-0.5160	-0.3209	-0.4390	0.2676	0.2009	0.3905	0.4167	I830077J02Rik
-0.5482	-0.2728	-0.4317	0.2361	0.1788	0.4113	0.4264	Bcl11a
-0.5194	-0.3658	-0.3982	0.2443	0.2402	0.3732	0.4257	2610002D18Rik
-0.5415	-0.3696	-0.3592	0.2210	0.2266	0.3756	0.4471	Spc24
-0.6024	-0.3054	-0.3281	0.2116	0.1749	0.4259	0.4235	Ephb2
-0.6327	-0.2640	-0.3338	0.1966	0.2320	0.3530	0.4488	Cenpm
-0.6372	-0.3824	-0.2225	0.2569	0.2568	0.3431	0.3853	Iqgap3
-0.6288	-0.3266	-0.3096	0.3102	0.2889	0.3139	0.3520	Neur1b
-0.6217	-0.3388	-0.3027	0.2660	0.2903	0.3203	0.3866	Mxd3
-0.6207	-0.3159	-0.3274	0.2773	0.2798	0.3168	0.3901	Cdc25c
-0.6207	-0.3692	-0.2713	0.2948	0.3022	0.2777	0.3865	Ccnb1
-0.6620	-0.3406	-0.2403	0.3389	0.3066	0.2801	0.3173	Slc45a3
-0.5957	-0.3771	-0.2898	0.3335	0.2002	0.3959	0.3330	Olf1r524
-0.6899	-0.2253	-0.3057	0.2598	0.2810	0.3081	0.3721	Kif2c
-0.6640	-0.2321	-0.3418	0.2717	0.2821	0.3647	0.3194	Ankle1
-0.7441	-0.2249	-0.2056	0.2465	0.2543	0.3130	0.3608	Ccnf
-0.7375	-0.1942	-0.2514	0.2755	0.2490	0.3149	0.3437	Rad51ap1
-0.5645	-0.3398	-0.2892	0.1295	0.1123	0.4724	0.4793	Gpr56
-0.5917	-0.3222	-0.2729	0.1307	0.1170	0.4741	0.4649	Epb4.1l4b

-0.5700	-0.3373	-0.2381	0.0947	0.0584	0.4963	0.4960	Evpl
-0.6988	-0.2059	-0.1603	0.0856	0.0478	0.4715	0.4601	Actn1
-0.3153	-0.1014	-0.1169	-0.3153	-0.3153	0.5891	0.5751	Scn4b
-0.3752	-0.0373	-0.0015	-0.3174	-0.3752	0.5979	0.5088	Lipg
-0.1259	-0.0928	-0.0966	-0.3810	-0.4307	0.5778	0.5492	Spib
-0.0991	-0.2678	-0.2331	-0.3214	-0.2564	0.6144	0.5635	Xist
-0.0852	-0.2732	-0.2732	-0.2732	-0.2732	0.6042	0.5737	Fam163b
-0.2373	-0.2373	-0.2373	-0.2373	-0.2373	0.6782	0.5083	Gm14236
-0.2637	-0.2637	-0.2637	-0.1265	-0.2637	0.6533	0.5282	Vwce
-0.2548	-0.1727	-0.2548	-0.2548	-0.2548	0.5796	0.6121	Hmgcs2
-0.2390	-0.2390	-0.2390	-0.2390	-0.2390	0.5910	0.6041	Spats2
-0.2390	-0.2390	-0.2390	-0.2390	-0.2390	0.6118	0.5832	Camkv
-0.2390	-0.2390	-0.2390	-0.2390	-0.2390	0.6113	0.5837	Fbln2
-0.2390	-0.2390	-0.2390	-0.2390	-0.2390	0.6106	0.5844	A930002I21Rik
-0.2396	-0.2396	-0.2368	-0.2396	-0.2396	0.5983	0.5969	Ptcra
-0.2390	-0.2390	-0.2390	-0.2390	-0.2390	0.6053	0.5898	Gm525
-0.2396	-0.2396	-0.2396	-0.2396	-0.2367	0.6030	0.5922	Myzap
-0.2088	-0.2443	-0.2141	-0.2410	-0.2844	0.6133	0.5795	Notch3
-0.2387	-0.2387	-0.2387	-0.2387	-0.2387	0.6337	0.5599	Slc5a9
-0.2385	-0.2385	-0.2385	-0.2385	-0.2385	0.6427	0.5500	Adamtsl2
-0.2389	-0.2389	-0.2389	-0.2389	-0.2389	0.6222	0.5723	Odz1
-0.2389	-0.2389	-0.2389	-0.2389	-0.2389	0.6240	0.5704	Rtkn
-0.2388	-0.2388	-0.2388	-0.2388	-0.2388	0.6269	0.5673	Kcnh3
-0.2388	-0.2388	-0.2388	-0.2388	-0.2388	0.6261	0.5682	Cldn4
-0.2888	-0.1540	-0.2888	-0.1624	-0.2888	0.5985	0.5843	Tdrd5
-0.2630	-0.2630	-0.1796	-0.2231	-0.2630	0.6097	0.5820	Uaca
-0.2567	-0.2567	-0.1671	-0.2567	-0.2541	0.5868	0.6045	2010001M09Rik
-0.3069	-0.2515	-0.0951	-0.2195	-0.3041	0.5969	0.5801	Mst1r
-0.3840	-0.1931	-0.2408	-0.1534	-0.2048	0.5964	0.5797	Bst1
-0.4229	-0.2042	-0.1157	-0.1831	-0.2371	0.5742	0.5887	Tmem151b
-0.3094	-0.3094	-0.3094	-0.0778	-0.1603	0.6025	0.5639	Rag1
-0.3078	-0.3078	-0.3078	-0.0501	-0.1894	0.6087	0.5540	H19
-0.2926	-0.2926	-0.2926	-0.0836	-0.2134	0.6029	0.5719	Mpzl2
-0.2947	-0.2947	-0.2910	-0.0534	-0.2353	0.5853	0.5838	Lhfpl2
-0.3058	-0.3058	-0.3058	-0.0474	-0.1992	0.5699	0.5940	Trbv5
-0.3401	-0.3401	-0.2775	-0.0784	-0.1220	0.5722	0.5858	Dntt
-0.3522	-0.3522	-0.2640	-0.0407	-0.1407	0.5774	0.5723	Slc16a5
-0.3290	-0.3290	-0.3290	-0.0389	-0.1219	0.5754	0.5725	Elfn2
-0.3241	-0.3241	-0.3241	-0.0387	-0.1407	0.5874	0.5644	1810059H22Rik
-0.3216	-0.3216	-0.3216	-0.0322	-0.1558	0.5774	0.5754	C1qtnf1
-0.4104	-0.2156	-0.3280	-0.0962	-0.0977	0.5787	0.5691	Gfra1

-0.3235	-0.2539	-0.3235	-0.1131	-0.1585	0.5661	0.6065	Ly6d
-0.3092	-0.3092	-0.3092	-0.1265	-0.1152	0.5920	0.5774	Gm5111
-0.3008	-0.3008	-0.2968	-0.1452	-0.1329	0.5853	0.5913	Cpne5
-0.3110	-0.2520	-0.3071	-0.1356	-0.1730	0.6253	0.5533	Col15a1
-0.2695	-0.2695	-0.2664	-0.2695	-0.1048	0.6356	0.5442	Gm12503
-0.2675	-0.2675	-0.2640	-0.2209	-0.1707	0.6098	0.5809	Pgpep1l
-0.3986	-0.2856	-0.1840	-0.1741	-0.1236	0.5988	0.5671	A930013B10Rik
-0.3444	-0.3444	-0.2051	-0.2180	-0.0436	0.6215	0.5340	Chrna9
-0.5428	-0.2115	-0.1507	-0.1166	-0.0877	0.5807	0.5286	Pld4
-0.4982	-0.2104	-0.1387	-0.1146	-0.1729	0.5923	0.5426	Adamts17
-0.3869	-0.2919	-0.3419	-0.0421	-0.0697	0.5784	0.5541	Ptprf
-0.3454	-0.3454	-0.3454	-0.0383	-0.0544	0.5762	0.5528	Rag2
-0.3527	-0.3527	-0.3527	-0.0008	-0.0578	0.5566	0.5601	Ptk7
-0.3580	-0.3580	-0.3543	0.0152	-0.0533	0.5335	0.5748	Tubb3
-0.4397	-0.2966	-0.3164	-0.0052	-0.0519	0.5561	0.5537	Sox13
-0.3539	-0.3539	-0.3501	-0.0696	0.0168	0.5052	0.6055	Id3
-0.3907	-0.3907	-0.3907	0.0886	0.0524	0.5182	0.5127	Prss57
-0.3922	-0.3922	-0.3888	0.0878	0.0553	0.5140	0.5160	Slc43a1
-0.3747	-0.3747	-0.3747	0.0209	0.0283	0.5397	0.5351	Sstr2
0.5291	-0.4272	-0.1444	0.3699	0.3601	-0.2604	-0.4272	Stc2
0.5843	-0.3636	-0.3636	0.2930	0.3836	-0.1702	-0.3636	Igfbp7
0.5443	-0.3337	-0.1910	0.3400	0.3931	-0.4126	-0.3400	Ccr6
0.6636	-0.2962	-0.1486	0.2887	0.2617	-0.4169	-0.3523	Sox8
0.6106	-0.2929	-0.1487	0.2863	0.3437	-0.3995	-0.3995	2810468N07Rik
0.7032	-0.4078	-0.3203	0.2444	0.2440	-0.1607	-0.3027	Il1r1
0.7206	-0.3818	-0.3818	0.2452	0.2090	-0.2269	-0.1844	Mapk10
0.7577	-0.3470	-0.3419	0.1918	0.2021	-0.1867	-0.2760	Scrt1
0.7394	-0.3305	-0.3900	0.2153	0.2125	-0.2028	-0.2438	Abi3bp
0.7398	-0.2968	-0.2968	0.2094	0.2378	-0.2968	-0.2968	1700006J14Rik
0.6935	-0.3081	-0.3017	0.2941	0.2384	-0.3081	-0.3081	Tdrd9
0.7914	-0.1657	-0.2684	0.1662	0.1472	-0.3354	-0.3354	Fzd4
0.7945	-0.1855	-0.3042	0.1882	0.1248	-0.3089	-0.3089	Irg1
0.7980	-0.3179	-0.2098	0.1568	0.1533	-0.3179	-0.2625	Kcnk1
0.8159	-0.2733	-0.2679	0.1080	0.1639	-0.2733	-0.2733	Smarca1
0.7796	-0.2703	-0.1801	0.1675	0.1774	-0.3371	-0.3371	Il23r
0.7952	-0.2132	-0.1423	0.1343	0.1476	-0.3907	-0.3309	Plekhg1
0.7334	-0.2451	-0.1614	0.2167	0.2109	-0.3772	-0.3772	Upp1
0.7708	-0.4411	-0.3643	0.0905	0.0243	-0.2224	0.1423	Hspa1a
0.7373	-0.4203	-0.4963	0.1664	0.0393	0.0308	-0.0573	Lingo4
0.7428	-0.4871	-0.2879	0.1845	0.1890	-0.1644	-0.1769	Mc5r
0.6922	-0.4070	-0.4683	0.2789	0.1588	-0.1444	-0.1101	Sdc1

0.6346	-0.5840	-0.4039	0.2346	0.1864	-0.0567	-0.0110	Tox2
0.8992	-0.2280	-0.1693	-0.2280	-0.2251	0.0347	-0.0836	Gm17056
0.9062	-0.2188	-0.2219	-0.1986	-0.1934	-0.0040	-0.0694	Fosb
0.9074	-0.2091	-0.2043	-0.2091	-0.2091	-0.0586	-0.0173	4930532G15Rik
0.9186	-0.1866	-0.1823	-0.1866	-0.1866	-0.0503	-0.1263	9630028B13Rik
0.9188	-0.1756	-0.1756	-0.1756	-0.1756	-0.0411	-0.1756	Hs6st2
0.9079	-0.2479	-0.0420	-0.2479	-0.1793	-0.1138	-0.0770	Slc24a1
0.8668	-0.3352	-0.2789	-0.1856	-0.1445	0.0285	0.0488	mt-Rnr2
0.8854	-0.2661	-0.2621	-0.0360	-0.0475	-0.0035	-0.2702	Ptgs2
0.9042	-0.2840	-0.1250	-0.1775	-0.0692	-0.0266	-0.2218	Snord118
0.8702	-0.0280	-0.1182	-0.2709	-0.2709	0.0888	-0.2709	SNORA17
0.9197	-0.0485	-0.1742	-0.1742	-0.1742	-0.1742	-0.1742	Cxcl2
0.9233	-0.1674	-0.1674	-0.0862	-0.1674	-0.1674	-0.1674	Il22
0.9258	-0.1543	-0.1543	-0.1543	-0.1543	-0.1543	-0.1543	Cxcl1
0.9258	-0.1543	-0.1543	-0.1543	-0.1543	-0.1543	-0.1543	Gm12473
0.9258	-0.1549	-0.1549	-0.1549	-0.1515	-0.1549	-0.1549	Zmat4
0.8875	-0.0428	-0.0760	-0.0585	-0.0880	-0.3111	-0.3111	Atf3
0.9009	-0.1349	-0.0976	-0.1104	-0.0389	-0.3375	-0.1817	Gjb2
0.3797	-0.4122	-0.6332	-0.0105	-0.0713	0.3582	0.3893	Ctla4
0.1692	-0.4067	-0.7403	0.1984	0.1950	0.2224	0.3619	Cdkn3
0.1983	-0.3574	-0.7457	0.2280	0.0072	0.3161	0.3535	Pou2af1
0.3883	-0.6554	-0.5042	0.1939	0.1216	0.1596	0.2961	Gm5465
0.4797	-0.6083	-0.5234	0.1264	0.1183	0.1233	0.2841	Gas2l3
0.4328	-0.5301	-0.6259	0.2576	0.1858	0.1428	0.1370	Auts2
0.3358	-0.5227	-0.6562	0.2499	0.1894	0.2439	0.1599	Tacstd2
0.5866	-0.6068	-0.4216	-0.0256	-0.0001	0.2375	0.2300	Dock1
0.5246	-0.6072	-0.4898	0.0515	0.1915	0.2711	0.0583	Rnf150
0.5745	-0.5802	-0.4791	0.0619	0.0509	0.3044	0.0677	Gls2
0.4332	-0.3232	-0.3232	-0.3232	-0.3232	0.5418	0.3177	Gm12913
0.4375	-0.3265	-0.3265	-0.3265	-0.3265	0.4855	0.3829	mt-Tl1
0.3568	-0.3308	-0.2693	-0.4427	-0.2308	0.5614	0.3554	Mir5115
0.4883	-0.2533	-0.2486	-0.4109	-0.3547	0.5264	0.2528	Mir5109
0.5765	-0.3228	-0.3228	-0.3228	-0.3194	0.3587	0.3527	Gm5263
0.7845	-0.2834	-0.2834	-0.2834	-0.2800	0.1205	0.2253	Gm7618
0.7407	-0.2829	-0.2294	-0.4038	-0.2528	0.2092	0.2191	Gm12420
0.0044	-0.4524	-0.4524	0.5456	0.5202	-0.0164	-0.1490	Svep1
0.3101	-0.4581	-0.4581	0.4447	0.3541	0.1705	-0.3632	Cacna1e
0.4055	-0.5457	-0.5457	0.3261	0.3539	-0.0617	0.0677	Grb10
0.1249	-0.4878	-0.6175	0.4901	0.3068	0.0082	0.1754	Lrrc66
0.3621	-0.2443	-0.7250	0.4612	0.2500	-0.0134	-0.0907	Sprn
-0.1141	-0.6483	-0.3389	0.4344	0.4362	-0.0367	0.2675	Depdc1a



0.0325	-0.4609	-0.3282	0.4806	0.5318	-0.3851	0.1293	Hhex
-0.3659	-0.3659	-0.3659	0.6079	0.4333	-0.1121	0.1687	Gm16194
-0.4179	-0.2851	-0.4179	0.5290	0.3839	-0.1416	0.3495	42257
-0.3176	-0.3176	-0.3176	0.4964	0.5460	-0.3176	0.2279	Olfir523
-0.3358	-0.3358	-0.2540	0.6018	0.5593	-0.1778	-0.0576	Clec4e
-0.3170	-0.3170	-0.3170	0.6237	0.5353	-0.1297	-0.0784	Cldn2
-0.4244	-0.2093	-0.2944	0.5854	0.5669	-0.1216	-0.1025	Gm8113
-0.2395	-0.2395	-0.2327	0.5336	0.6570	-0.2395	-0.2395	Syt6
-0.2607	-0.2607	-0.2607	0.5147	0.6664	-0.2607	-0.1383	Siglec5
-0.2626	-0.2626	-0.2626	0.5026	0.6748	-0.2626	-0.1269	Prss16
-0.2864	-0.1069	-0.2864	0.6078	0.5722	-0.2864	-0.2138	Cd34
-0.2750	-0.0824	-0.2676	0.6353	0.5396	-0.2750	-0.2750	Gcm2
-0.2388	-0.2388	-0.2388	0.6292	0.5648	-0.2388	-0.2388	Fgf3
-0.2390	-0.2390	-0.2390	0.6055	0.5897	-0.2390	-0.2390	Ripply1
-0.2390	-0.2390	-0.2390	0.6109	0.5841	-0.2390	-0.2390	Sema3c
-0.2405	-0.2405	-0.2327	0.6154	0.5794	-0.2405	-0.2405	Gm15947
-0.2390	-0.2390	-0.2390	0.6170	0.5778	-0.2390	-0.2390	Aox1
-0.2383	-0.2383	-0.2383	0.6512	0.5404	-0.2383	-0.2383	Ahsg
-0.2378	-0.2378	-0.2378	0.6669	0.5221	-0.2378	-0.2378	Ctsg
-0.2374	-0.2374	-0.2374	0.6769	0.5100	-0.2374	-0.2374	Caly
-0.2370	-0.2370	-0.2370	0.6856	0.4993	-0.2370	-0.2370	Trav14n-3
-0.4078	-0.2114	-0.4078	0.5766	0.5277	0.0277	-0.1048	Slc35d3
-0.3127	-0.3127	-0.3127	0.7026	0.4252	-0.0106	-0.1790	Gm11692
-0.2947	0.0418	-0.2947	0.5194	0.6174	-0.2947	-0.2947	Adamts2
-0.3427	-0.0422	-0.3340	0.6328	0.4968	-0.0680	-0.3427	Stbd1
-0.1874	0.0497	0.0613	0.5145	0.5020	-0.4657	-0.4745	Lgals3
-0.1692	0.0488	0.1016	0.4936	0.4949	-0.4849	-0.4849	Cx3cr1
-0.4426	0.1036	-0.0047	0.5512	0.4822	-0.4426	-0.2470	Parm1
-0.3073	-0.1526	-0.0954	0.5933	0.5765	-0.3073	-0.3073	Fam179a
-0.3610	-0.0549	-0.0382	0.5586	0.5653	-0.4033	-0.2665	Igfbp4
-0.3546	-0.1209	0.0893	0.5521	0.5434	-0.3546	-0.3546	Mmp27
-0.3696	-0.0382	0.0665	0.5516	0.5291	-0.3696	-0.3696	Lama3
-0.3843	0.0233	0.0813	0.5095	0.5387	-0.3843	-0.3843	Abhd12b
-0.4266	-0.4266	-0.4196	0.4613	0.3860	0.2748	0.1507	Morc4
-0.5206	-0.3192	-0.4411	0.4082	0.3801	0.2528	0.2398	Gm15428
-0.4316	-0.4316	-0.4316	0.4083	0.3834	0.2720	0.2312	Il31ra
-0.4410	-0.4082	-0.4517	0.3726	0.3807	0.2978	0.2499	Cd163l1
-0.4478	-0.4107	-0.4324	0.3815	0.4195	0.2122	0.2778	Lgals1
-0.4333	-0.4333	-0.4333	0.3660	0.3908	0.2371	0.3061	Gm2788
-0.6235	-0.3308	-0.2922	0.3943	0.3676	0.3074	0.1771	Kif5a
-0.4849	-0.3835	-0.3756	0.3990	0.4748	0.0767	0.2935	Gm12856

-0.5218	-0.4174	-0.2762	0.5154	0.3470	0.0564	0.2966	Mdga1
-0.4592	-0.4132	-0.3421	0.4643	0.4916	0.0563	0.2023	Stmn1
-0.4455	-0.4455	-0.3009	0.5377	0.4457	0.0660	0.1426	Odz4
-0.4621	-0.4621	-0.1797	0.5237	0.5068	0.0950	-0.0216	E030002O03Rik
-0.4422	-0.3288	-0.2869	0.5780	0.5253	0.0156	-0.0609	Slc15a1
-0.4824	-0.3692	-0.2162	0.5454	0.5274	0.0631	-0.0680	Slc17a8
-0.6279	-0.3401	-0.0579	0.5022	0.4799	0.0628	-0.0189	Sox5
-0.6532	-0.2605	-0.2083	0.4730	0.4701	0.1142	0.0647	Gm5593
-0.7603	-0.1472	-0.1546	0.4273	0.4106	0.1090	0.1152	Tgfb3
-0.6027	-0.2326	-0.3502	0.4366	0.4586	0.2372	0.0531	Lyl1
-0.6737	-0.1559	-0.2654	0.4761	0.4329	0.1930	-0.0069	Tas1r1
-0.8596	0.0915	0.1164	0.3349	0.3412	-0.0839	0.0595	Cpa3
-0.7068	0.0370	0.0970	0.4630	0.4557	-0.2355	-0.1104	Emilin2
-0.9115	0.0552	0.0739	0.1644	0.1555	0.2671	0.1953	Adcy6
-0.8876	-0.0173	-0.0131	0.2333	0.2504	0.2067	0.2276	5830411N06Rik
-0.9076	0.0272	0.0601	0.2281	0.2336	0.1572	0.2014	Sell
-0.8855	-0.0028	0.0287	0.3039	0.2962	0.1034	0.1559	Slc22a3
0.6935	-0.1365	-0.0843	0.2182	0.2068	-0.4514	-0.4463	Fosl2
0.6026	-0.1774	-0.1227	0.3154	0.2847	-0.4158	-0.4868	Hey1
0.6050	-0.1310	-0.0770	0.3040	0.2526	-0.4768	-0.4768	Tns4
0.5129	-0.1126	-0.0500	0.3185	0.3376	-0.5032	-0.5032	Rhod
0.5697	-0.0196	0.0439	0.2261	0.2417	-0.5309	-0.5309	Calca
0.5213	-0.0771	-0.0068	0.2913	0.2940	-0.6296	-0.3932	Plaur
0.4660	0.0929	-0.0749	0.3214	0.2786	-0.5420	-0.5420	Sv2b
0.1855	-0.0551	0.0152	0.4492	0.4547	-0.4852	-0.5642	Ifitm1
0.1877	-0.0549	-0.0649	0.4934	0.4501	-0.5057	-0.5057	Edil3
0.1896	0.0612	0.0589	0.3992	0.3990	-0.6644	-0.4437	Fam20a
0.1232	-0.0750	-0.1854	0.5454	0.4920	-0.4556	-0.4446	Podxl
0.2691	-0.2535	-0.0686	0.4666	0.4856	-0.4686	-0.4307	Btnl9
0.3834	-0.1700	-0.1277	0.3530	0.4869	-0.5570	-0.3685	Nqo1
0.3280	-0.2113	-0.3586	0.5132	0.4457	-0.3586	-0.3586	Fam81a
0.4094	-0.2448	-0.3698	0.4645	0.4255	-0.2963	-0.3886	Dsp
0.2838	-0.3221	-0.3221	0.5077	0.4967	-0.3221	-0.3221	Eml1
0.2780	-0.3072	-0.3072	0.2593	0.6914	-0.3072	-0.3072	Clec4d
0.4409	0.2308	0.2028	0.1497	0.1297	-0.6334	-0.5205	Hs3st1
0.4776	0.2250	0.2065	0.1133	0.1191	-0.5708	-0.5708	Klrg1
0.4367	0.2149	0.2107	0.1520	0.1467	-0.5805	-0.5805	Ccr8
0.4201	0.2090	0.2137	0.1600	0.1647	-0.5837	-0.5837	Il4
0.4367	0.2327	0.2170	0.1497	0.1221	-0.5791	-0.5791	Fbxl21
0.4242	0.2319	0.2245	0.1497	0.1324	-0.5814	-0.5814	Naip6
0.3976	0.1997	0.2105	0.1748	0.1840	-0.6631	-0.5036	Fam46a

0.4018	0.1894	0.2043	0.1831	0.1923	-0.6359	-0.5349	Neurl3
0.4078	0.2028	0.1787	0.2077	0.1694	-0.6477	-0.5188	Abcb1a
0.4143	0.2073	0.1957	0.1816	0.1657	-0.6470	-0.5177	Myo1e
0.4159	0.1863	0.1519	0.2022	0.2023	-0.6698	-0.4888	Il2rb
0.4306	0.1868	0.2082	0.1664	0.1525	-0.6958	-0.4487	Lilrb4
0.4818	0.1201	0.1464	0.2059	0.1860	-0.5209	-0.6194	Gp49a
0.4427	0.1764	0.1637	0.2056	0.1725	-0.5705	-0.5904	Rora
0.4687	0.1745	0.1203	0.1770	0.2089	-0.5747	-0.5747	1700113H08Rik
0.6257	0.1705	0.1634	0.0392	0.0488	-0.5238	-0.5238	Csf2
0.5689	0.1764	0.1793	0.1055	0.0632	-0.5468	-0.5468	Clnk
0.6369	0.0918	0.0639	0.1138	0.1414	-0.5239	-0.5239	Il13
0.6970	0.0781	0.0609	0.0707	0.0845	-0.5182	-0.4730	Tgm2
0.6953	0.0402	0.0443	0.0926	0.1181	-0.4952	-0.4952	Klrb1b
0.4613	0.3035	0.3075	-0.0244	0.0393	-0.6042	-0.4831	Cxcl10
0.6073	0.2295	0.2460	-0.0535	-0.0150	-0.5227	-0.4916	Ccr12
0.2632	0.3181	0.3217	0.1238	0.1254	-0.4511	-0.7011	Gm4956
0.2702	0.3468	0.3214	0.1219	0.1039	-0.5821	-0.5821	Art2b
0.2762	0.3369	0.3539	0.0831	0.1038	-0.5495	-0.6045	Ffar2
0.2490	0.3628	0.3691	0.0724	0.0925	-0.5729	-0.5729	Hpn
0.3144	0.2988	0.3328	0.1122	0.1058	-0.5820	-0.5820	Pard3
0.3131	0.3406	0.3160	0.0948	0.0920	-0.5782	-0.5782	Asb2
0.3359	0.3245	0.2981	0.1001	0.1013	-0.5800	-0.5800	Serpina3f
0.3312	0.3002	0.2883	0.1215	0.1297	-0.5854	-0.5854	Csf1
0.3829	0.2873	0.2778	0.1081	0.1027	-0.5794	-0.5794	Ret
0.3897	0.3051	0.2789	0.1108	0.0652	-0.5748	-0.5748	Art2a-ps
0.4132	0.3016	0.2857	0.0579	0.0792	-0.5688	-0.5688	Sdc4
0.4175	0.2933	0.2576	0.0752	0.1028	-0.5732	-0.5732	Il6
0.4006	0.2876	0.2716	0.0888	0.0977	-0.5073	-0.6390	Gimap4
0.3762	0.2303	0.2058	0.1786	0.1503	-0.4011	-0.7401	Adam19
0.4332	0.2026	0.1969	0.1503	0.1596	-0.4454	-0.6972	Dkk3
0.4832	0.2619	0.2242	0.0791	0.0483	-0.4113	-0.6855	Irak3
0.2573	0.3125	0.2975	0.1502	0.1641	-0.5908	-0.5908	Serpina3g
0.2538	0.2850	0.2927	0.1657	0.1903	-0.5937	-0.5937	1810011H11Rik
0.2483	0.2929	0.3046	0.1613	0.1778	-0.5925	-0.5925	Cpne7
0.2516	0.3074	0.3179	0.1507	0.1496	-0.6284	-0.5488	H2-Q6
0.2023	0.2990	0.3007	0.1822	0.2027	-0.6119	-0.5750	Gimap3
0.2286	0.2921	0.3172	0.1645	0.1819	-0.6062	-0.5781	Fam55d
0.2421	0.2746	0.2708	0.2003	0.2037	-0.6187	-0.5729	Naip2
0.2376	0.2587	0.2778	0.2115	0.2066	-0.6223	-0.5699	Mmp25
0.1580	0.2931	0.3101	0.2019	0.2178	-0.6516	-0.5293	Acsbg1
0.1768	0.3332	0.3398	0.1660	0.1575	-0.6156	-0.5576	H2-Q8

0.2292	0.2571	0.2524	0.2304	0.2195	-0.5237	-0.6649	Eif2s3y
0.2056	0.2519	0.2564	0.2261	0.2512	-0.5461	-0.6450	Gm14303
0.2043	0.2736	0.2696	0.2106	0.2335	-0.5648	-0.6268	Zbtb7b
0.2495	0.2358	0.2440	0.2209	0.2447	-0.5975	-0.5975	Krt80
0.2272	0.2323	0.2369	0.2401	0.2581	-0.6119	-0.5827	Ptgir
0.1491	0.2871	0.2755	0.2249	0.2513	-0.5940	-0.5940	Alox5
0.1783	0.2707	0.2834	0.2273	0.2314	-0.5863	-0.6047	Samhd1
0.1916	0.2805	0.2733	0.2211	0.2254	-0.5959	-0.5959	Fam19a3
0.1895	0.3046	0.2770	0.2039	0.2141	-0.5946	-0.5946	Metrn1
0.1879	0.2719	0.2659	0.2322	0.2338	-0.6210	-0.5707	Tspan32
0.1875	0.2876	0.2816	0.2131	0.2200	-0.6199	-0.5698	Gm5127
0.3410	0.2425	0.2225	0.1904	0.1895	-0.5930	-0.5930	1300014I06Rik
0.3577	0.2668	0.2370	0.1670	0.1493	-0.6088	-0.5691	Nmur1
0.3674	0.2172	0.2506	0.1734	0.1702	-0.5636	-0.6152	Pde7b
0.3564	0.1985	0.2594	0.1691	0.1984	-0.5909	-0.5909	Klrk1
0.2858	0.2652	0.2422	0.1977	0.2007	-0.5958	-0.5958	Rnf128
0.2981	0.2335	0.2355	0.2144	0.2107	-0.5961	-0.5961	Il18rap
0.2912	0.2709	0.2206	0.2131	0.1942	-0.5635	-0.6265	Cntn1
0.3069	0.2529	0.2398	0.1902	0.1996	-0.5728	-0.6166	Cxcr6
0.3084	0.2294	0.2659	0.1782	0.2066	-0.5736	-0.6149	Slc7a8
0.3336	0.2156	0.2279	0.2038	0.2060	-0.5621	-0.6248	Ddx3y
0.3715	0.2380	0.2223	0.1700	0.1667	-0.4937	-0.6749	Epas1
0.3440	0.2562	0.2310	0.1803	0.1556	-0.4722	-0.6950	Lpcat2
0.3886	0.2395	0.2242	0.1450	0.1720	-0.5254	-0.6440	Arg1
0.3142	0.2621	0.2681	0.1693	0.1691	-0.5471	-0.6357	Ttc39b
0.3299	0.2919	0.2381	0.1871	0.1281	-0.5260	-0.6490	Pcsk1
0.2736	0.2613	0.2703	0.1759	0.1929	-0.4722	-0.7019	Naip5
0.2300	0.2413	0.2454	0.2237	0.2300	-0.4425	-0.7280	Nt5e
0.2556	0.2172	0.1977	0.2602	0.2509	-0.4918	-0.6898	Gpr114
0.2510	0.2196	0.2305	0.2613	0.2271	-0.5301	-0.6594	Nav2
0.2743	0.2274	0.2133	0.2436	0.2275	-0.5123	-0.6738	Cd200r1
0.3068	0.2070	0.1779	0.2541	0.2353	-0.5073	-0.6738	Jag1
0.3497	0.1908	0.1622	0.2490	0.2231	-0.5066	-0.6683	Ahnak
0.2269	0.1275	0.1452	0.3365	0.3344	-0.6057	-0.5650	Il18r1
0.2381	0.1380	0.1185	0.3489	0.3244	-0.6097	-0.5582	Gzmb
0.3299	0.1222	0.1097	0.3004	0.3049	-0.5835	-0.5835	Stab2
0.3542	0.1205	0.1418	0.2785	0.2757	-0.6065	-0.5643	Ramp3
0.2814	0.1941	0.1756	0.2759	0.2624	-0.5907	-0.5987	Hlf
0.3255	0.1886	0.1843	0.2489	0.2401	-0.5937	-0.5937	Itga2
0.3582	0.1697	0.1671	0.2394	0.2460	-0.6067	-0.5737	Icos
0.2457	0.2582	0.2421	0.2227	0.2199	-0.6645	-0.5243	Fgl2

0.2833	0.2401	0.2378	0.2157	0.2057	-0.6846	-0.4980	Kdm5d
0.3258	0.2184	0.2306	0.2087	0.1938	-0.6858	-0.4915	Uty
0.3266	0.2165	0.2004	0.2244	0.2071	-0.6945	-0.4804	Cd226
0.0699	0.2841	0.2742	0.2608	0.2821	-0.6401	-0.5309	Rpsa-ps10
0.1362	0.2769	0.2687	0.2408	0.2616	-0.6427	-0.5414	Gm15500
0.1161	0.2858	0.2820	0.2525	0.2407	-0.6618	-0.5154	Fam124b
0.0757	0.2225	0.1871	0.3300	0.3496	-0.5825	-0.5825	S100a4
0.1409	0.2272	0.2364	0.2945	0.2869	-0.6073	-0.5786	Rab27b
0.1999	0.2023	0.2341	0.2714	0.2840	-0.5958	-0.5958	9430031J16Rik
0.1528	0.1214	0.2584	0.3160	0.3256	-0.5871	-0.5871	Zbtb16
-0.0809	0.2491	0.2616	0.3422	0.3467	-0.5593	-0.5593	S1pr1
0.0167	0.2713	0.2670	0.2934	0.3109	-0.5797	-0.5797	Rpl28-ps1
-0.0401	0.2785	0.2860	0.2980	0.3117	-0.6380	-0.4961	Rarg
0.0638	0.2847	0.2832	0.2503	0.2713	-0.4472	-0.7060	Gm13654
0.0194	0.3092	0.3334	0.2260	0.2589	-0.4807	-0.6661	Ltb4r1
0.1126	0.2798	0.2767	0.2572	0.2570	-0.5917	-0.5917	Il1rl1
0.0776	0.2784	0.2820	0.2623	0.2759	-0.5765	-0.5997	Tnfrsf25
0.0992	0.3084	0.2686	0.2577	0.2429	-0.5371	-0.6396	Tlr1
0.0833	0.2723	0.2744	0.2618	0.2826	-0.5352	-0.6393	Rps25-ps1
0.1435	0.3244	0.3335	0.1885	0.1857	-0.5563	-0.6193	Gvin1
0.1064	0.3470	0.3412	0.1866	0.1865	-0.5714	-0.5964	Grin2d
0.1247	0.3345	0.3406	0.1824	0.1817	-0.5019	-0.6621	Gm4070
-0.6358	0.3335	0.3195	0.2932	0.3144	-0.3479	-0.2769	Gm11361
-0.6136	0.3311	0.3274	0.2997	0.3150	-0.3260	-0.3337	Gm5045
-0.5881	0.3207	0.3282	0.3162	0.3180	-0.3241	-0.3708	Id1
-0.6026	0.3250	0.3301	0.2916	0.3288	-0.3001	-0.3729	Gm10709
-0.6861	0.2604	0.2726	0.3528	0.3411	-0.2741	-0.2668	Elovl7
-0.6634	0.3284	0.3113	0.2914	0.3158	-0.2818	-0.3018	Gm6274
-0.6931	0.3264	0.3338	0.2701	0.2937	-0.2384	-0.2926	Gm5148
-0.4650	0.3698	0.3512	0.3003	0.2808	-0.3721	-0.4650	St8sia6
-0.4657	0.3970	0.4032	0.2440	0.2438	-0.3565	-0.4657	Apol9b
-0.4986	0.3356	0.3321	0.3062	0.3261	-0.3410	-0.4605	Gm7536
-0.4677	0.3472	0.3390	0.2952	0.3225	-0.3686	-0.4677	Gm12191
-0.4731	0.3368	0.3390	0.2962	0.3335	-0.3822	-0.4503	Gm10119
-0.4736	0.3144	0.3205	0.3146	0.3494	-0.3338	-0.4915	Gm10736
-0.5052	0.3370	0.3441	0.2781	0.3248	-0.2735	-0.5052	Gm13611
-0.5383	0.3311	0.3261	0.3082	0.3314	-0.3507	-0.4078	Gm5428
-0.5313	0.3412	0.3360	0.2957	0.3237	-0.4236	-0.3417	Gm13268
-0.4579	0.3381	0.3293	0.3110	0.3300	-0.4134	-0.4371	Gm13436
-0.4361	0.3396	0.3471	0.2981	0.3236	-0.4361	-0.4361	Gm12918
-0.4364	0.3268	0.3174	0.3362	0.3287	-0.4364	-0.4364	5430421N21Rik

-0.4361	0.3065	0.3150	0.3303	0.3565	-0.4361	-0.4361	Gm10116
-0.4359	0.3064	0.2977	0.3479	0.3557	-0.4359	-0.4359	Gm10241
-0.4251	0.2126	0.2007	0.4129	0.4492	-0.4251	-0.4251	Ggt1
-0.4342	0.2949	0.2589	0.3630	0.3856	-0.4342	-0.4342	Al646023
-0.4314	0.2537	0.2445	0.3780	0.4180	-0.4314	-0.4314	Spon2
-0.3677	0.3239	0.3290	0.3064	0.3293	-0.5731	-0.3477	Gm8430
-0.2017	0.3278	0.3188	0.2971	0.3175	-0.5297	-0.5297	Rps27a-ps2
-0.2919	0.3442	0.3346	0.3015	0.3093	-0.4989	-0.4989	Rpl9-ps4
-0.4870	0.5179	0.5514	-0.0701	-0.0001	-0.0909	-0.4212	Fscn1
-0.4088	0.5673	0.5526	-0.0354	-0.0433	-0.2804	-0.3520	Gm4841
-0.3979	0.5830	0.5352	-0.0084	-0.0952	-0.2187	-0.3979	Gm5970
-0.6080	0.4849	0.4918	0.0274	0.1247	-0.2873	-0.2334	Ifit3
-0.5554	0.5243	0.5084	0.0562	0.0145	-0.3224	-0.2256	Gm4951
-0.5893	0.5039	0.5245	-0.0102	0.0551	-0.2830	-0.2011	I830012O16Rik
-0.5960	0.5161	0.5240	-0.0127	0.0191	-0.2544	-0.1961	Ifi44
-0.4696	0.4955	0.4825	0.0872	0.1172	-0.4696	-0.2434	Ms4a4c
-0.4982	0.4911	0.5059	0.0896	0.0956	-0.3850	-0.2989	Slfn1
-0.6663	0.3964	0.4193	0.1788	0.2122	-0.2643	-0.2762	Pydc3
-0.6989	0.4368	0.4621	0.0787	0.1293	-0.1806	-0.2273	Tlr7
-0.7469	0.4577	0.4664	-0.0697	0.0281	-0.0798	-0.0558	Gm14446
-0.8407	0.3459	0.3395	0.1384	0.1621	-0.0379	-0.1073	Ly6c1
-0.1229	0.5597	0.5354	-0.0444	-0.0687	-0.3614	-0.4977	F830016B08Rik
0.1025	0.5190	0.5192	-0.1364	-0.0872	-0.4153	-0.5018	Gbp10
0.1623	0.5275	0.5550	-0.3112	-0.3112	-0.3112	-0.3112	Apol7c
0.0369	0.5753	0.5492	-0.3394	-0.3394	-0.1433	-0.3394	Aldh1a2
-0.0176	0.5639	0.5713	-0.0996	-0.3393	-0.3393	-0.3393	Vmn2r100
-0.2675	0.5409	0.6396	-0.1105	-0.2675	-0.2675	-0.2675	Clu
-0.2781	0.5749	0.6124	-0.1873	-0.1657	-0.2781	-0.2781	Klra14
-0.2386	0.6410	0.5519	-0.2386	-0.2386	-0.2386	-0.2386	Anxa3
-0.2389	0.5687	0.6255	-0.2389	-0.2389	-0.2389	-0.2389	Gm8221
-0.2388	0.5684	0.6259	-0.2388	-0.2388	-0.2388	-0.2388	Zfp366
-0.2390	0.5928	0.6024	-0.2390	-0.2390	-0.2390	-0.2390	Lyz1
-0.2331	0.4253	0.7400	-0.2331	-0.2331	-0.2331	-0.2331	Cd209b
0.5345	0.3458	0.4050	-0.3873	-0.2656	-0.2452	-0.3873	Ccl22
0.5224	0.3849	0.3906	-0.3181	-0.3470	-0.3637	-0.2692	Dgat2
0.5150	0.3705	0.3614	-0.1966	-0.1491	-0.4506	-0.4506	Cybb
0.3815	0.5408	0.3444	-0.2676	-0.1784	-0.4497	-0.3711	Cyp26b1
0.7509	0.2120	0.2010	-0.3391	-0.3391	-0.2058	-0.2801	Ahrr
0.7005	0.2774	0.2316	-0.2386	-0.2975	-0.2797	-0.3938	Atp8a2
0.8038	0.1909	0.0781	-0.2860	-0.3536	-0.2894	-0.1439	Ppfibp2
0.4294	0.4628	0.2500	-0.1762	-0.6633	-0.0462	-0.2566	Ceacam15

-0.1808	0.4432	0.3482	-0.4698	-0.5663	0.3067	0.1189	Gbp11
-0.4263	0.3477	0.3104	-0.4263	-0.4195	0.4726	0.1414	Dnahc2
-0.1121	0.3904	0.1626	-0.2991	-0.6375	0.5559	-0.0602	Gm12194
-0.4548	0.2581	0.1787	-0.3542	-0.4548	0.3129	0.5142	Akap2
-0.4585	0.4588	0.4745	-0.2721	-0.4585	-0.0081	0.2639	Lad1
-0.4696	0.4803	0.4063	-0.2673	-0.4630	0.3129	0.0004	Lama4
-0.4469	0.4339	0.5917	-0.2097	-0.4469	0.1261	-0.0483	Gm16340
-0.4462	0.4168	0.6050	-0.2090	-0.4462	0.1271	-0.0474	Ttc39a
0.0087	0.2248	0.2459	-0.5908	-0.5605	0.3300	0.3419	Pou6f1
0.2755	0.1192	0.1961	-0.6592	-0.5115	0.3500	0.2299	Tlr9