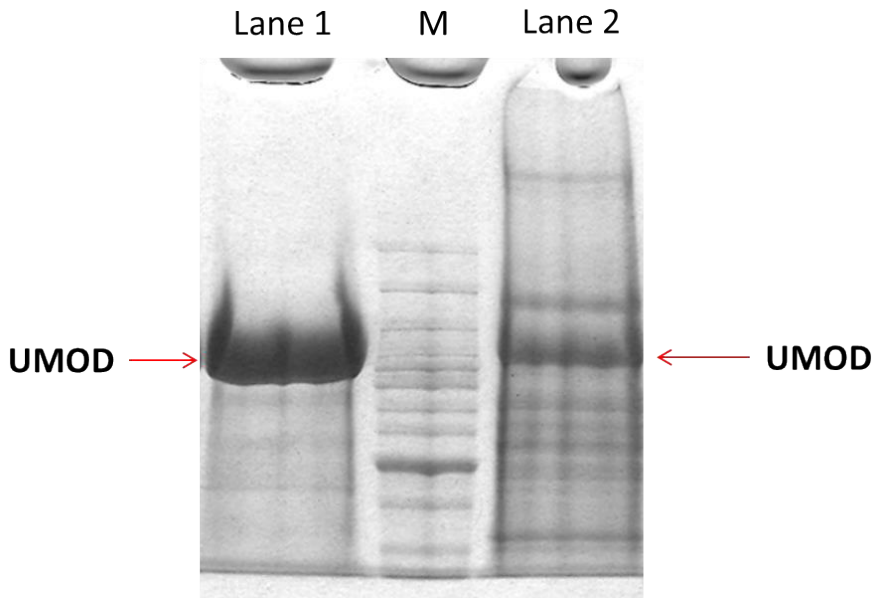
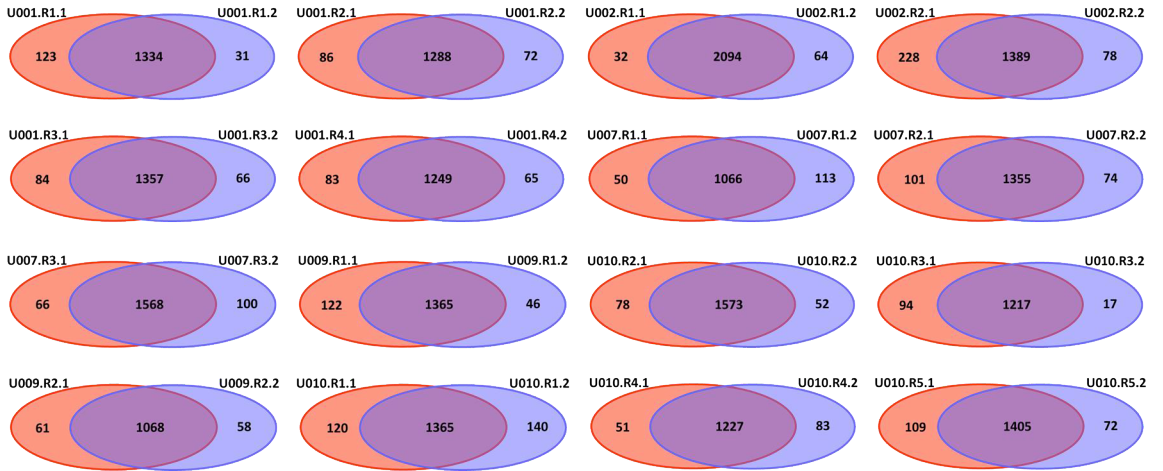


Supplementary Data:

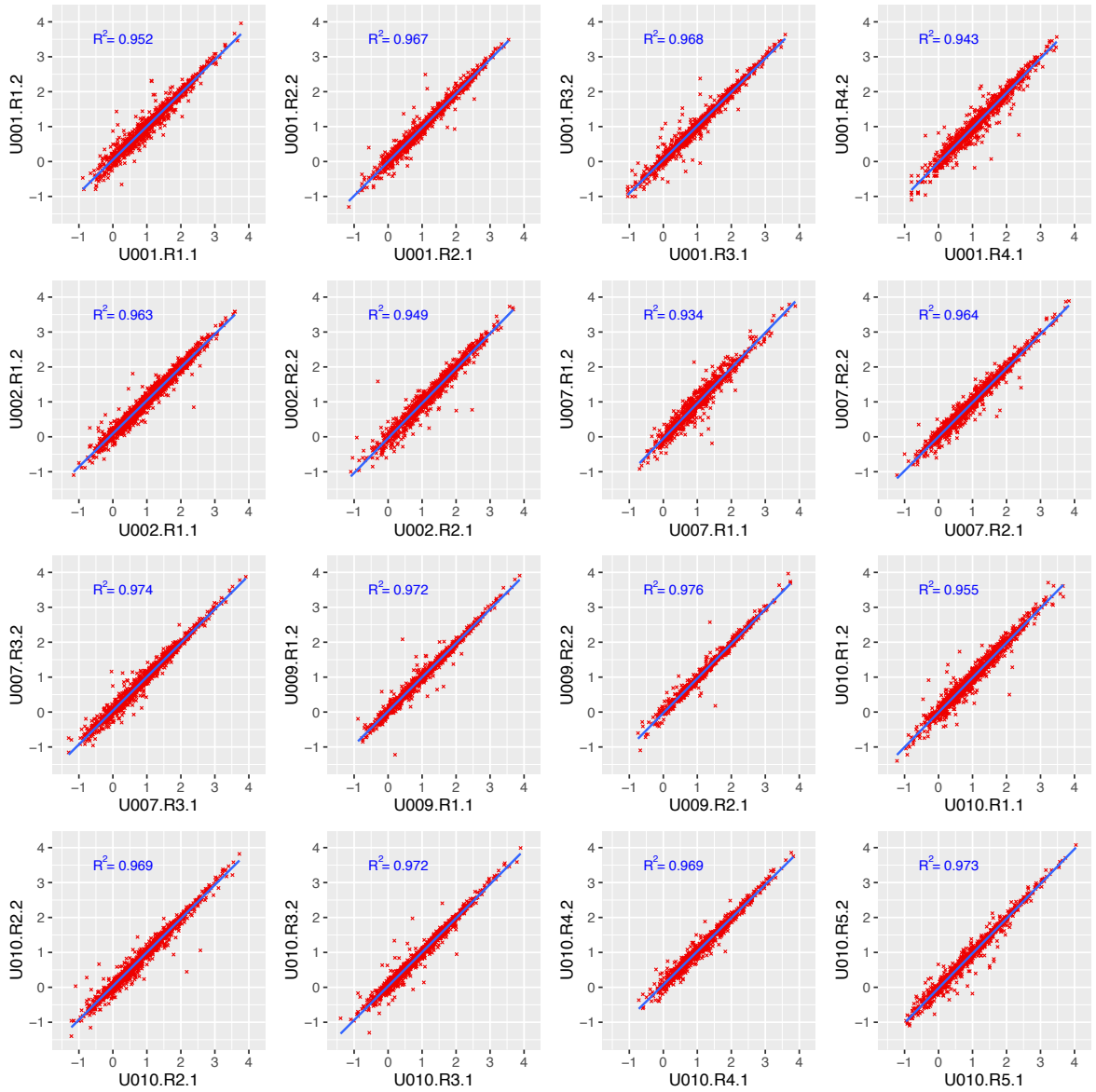


Supplementary Fig. 1. Depletion of uromodulin with DTT reduction. Lane1: Pellet from 20 ml of urine centrifuged at 200Kg for 70 mins was dissolved in 400 ul 1% SDS buffer, and 10 ul of sample was loaded on gel. M: Protein ruler. Lane2: Pellet from the same method as lane1 was reduced with 50 mM DTT. Then the resulting pellet was dissolved in 60 ul of 1% SDS buffer, and 30 ul of sample was loaded on gel.

a.

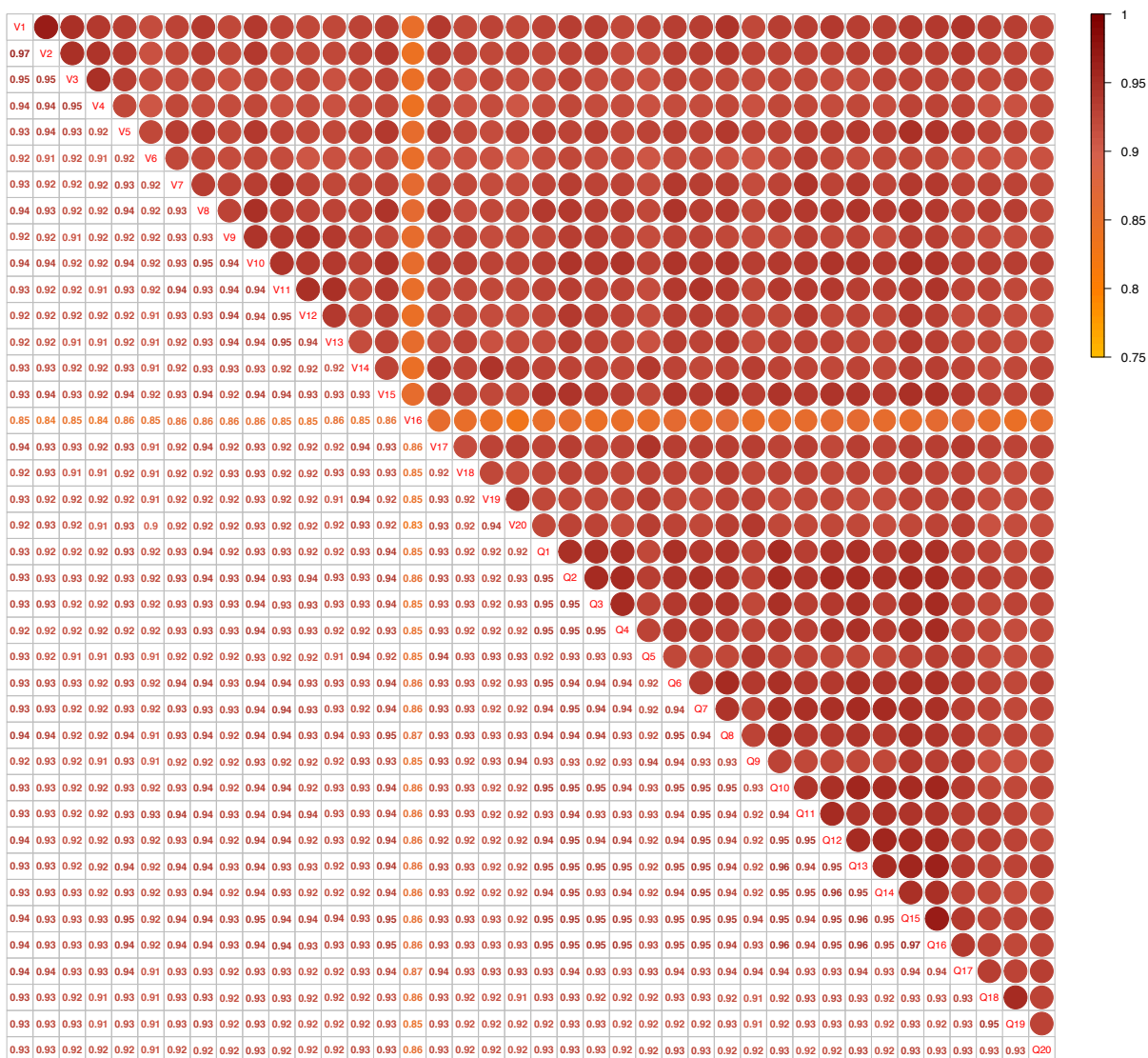


b.

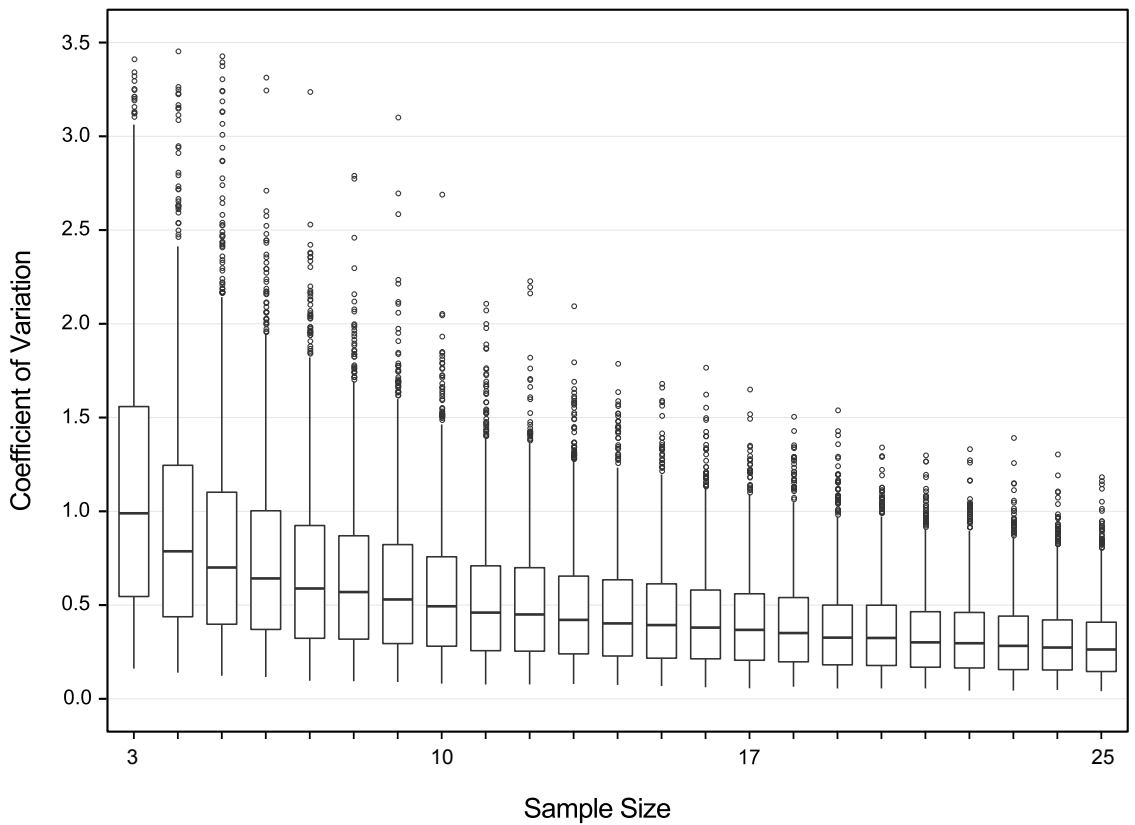


d.

BCM



Supplementary Fig. 2. Reproducibility of the fast workflow for profiling urine proteome. (a) Reproducibility of GP identifications. 16 urine samples from 5 donors were split into 2 MS samples each. Following the same sample preparation and LC-MS/MS analysis, the overlaps of GP identifications between two split samples were around 90%. (b) Reproducibility of GP quantification. Squares of coefficients of correlation range from 0.94 to 0.97 for all 16 pairs of samples, which demonstrate robustness and high reproducibility of the fast workflow. (c) Analysis of Pearson correlation for QC data over 2 months from LC-MS in BPRC. V1-V20 and Q1-Q20 represented the 20 of QC data from Orbitrap-Velos and Q-Exacte, respectively. Coefficients of correlation range from 0.85 to 0.96. Inter-day variation from each machine and inter-machine variation were included in the analysis. (d) Analysis of Pearson correlation for QC data over 2 months from LC-MS in BCM. V1-V20 and Q1-Q20 represented the 20 of QC data from Orbitrap-Velos and Q-Exacte, respectively. Coefficients of correlation range from 0.83 to 0.97. Inter-day variation from each machine and inter-machine variation were included in the analysis.



Supplementary Fig. 3. The effect of sample size on intra-personal variation of urine proteomes from U002. Numbers in x-axis represent sample sizes. CVs in y-axis were calculated with 100 iterations of mean iFOT5 for each GP in each subset size.

Subjects	Time span (days)	Number of samples
U001	314	62
U002	264	51
U003	138	14
U004	117	10
U005	141	15
U006	77	6
U007	86	25
U008	133	10
U009	174	22
U010	5	20
U011	171	15
U012	61	13
U013	66	11
U014	65	12
U015	18	13
U016	63	8
U017	17	12

Supplementary Table 2. Time span of urine sampling and numbers of samples for 17 test subjects in BCM dataset.