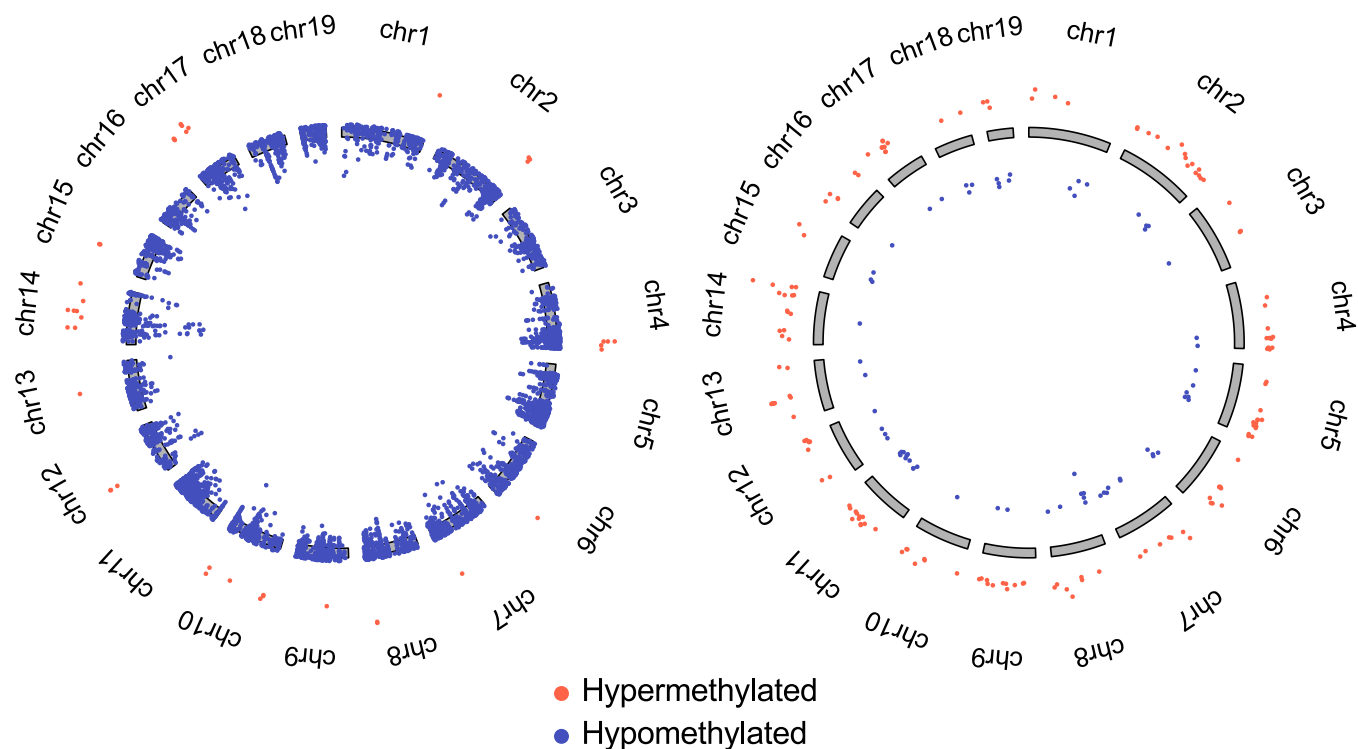


SUPPLEMENTARY FIGURE 2

MAT1A-KO + vehicle vs. WT + vehicle MAT1A-KO + SAME vs. MAT1A-KO + vehicle



DMR*	MAT1A-KO + vehicle vs. WT + vehicle	MAT1A-KO + SAME vs. WT + vehicle	MAT1A-KO + SAME vs. MAT1A-KO + vehicle
Hypermethylated	43	53	161
Hypomethylated	6678	5330	69
Total	6721	5383	230

*Filtering parameters: Q-value < .05, methylation difference > 20%