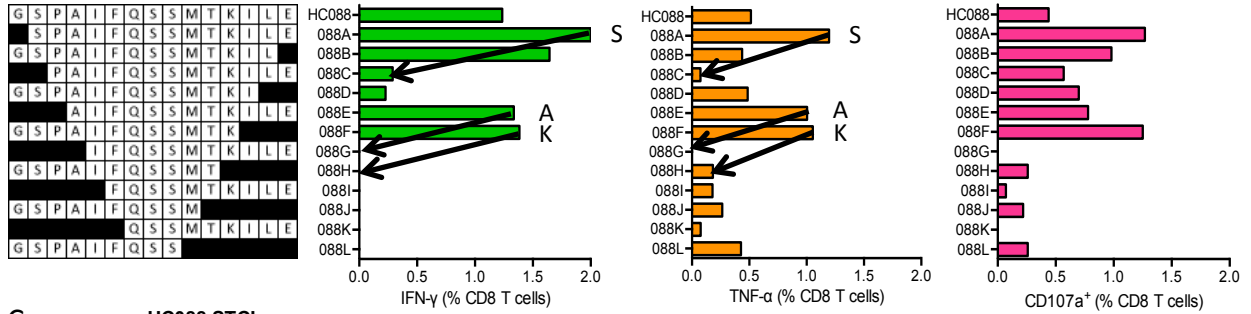


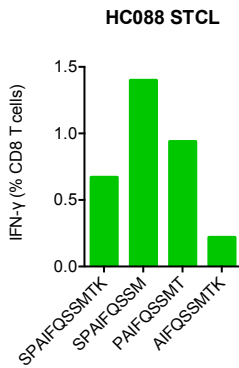
A

**HC088 GSPAIFQSSMTKILE (Pol)**  
 VID 421 - A\*02:01 (A02) A\*11:01 (A03) B\*35:03 (B07) B\*40:02 (B44) C\*02:02 C\*12:03  
**SPAIFQSSMTK/HLA-A\*11:01** Not predicted, reported A11, confirmed A\*11:01, 'A-list' candidate  
**SPAIFQSSM** Predicted B\*35:03, not reported, **not** B\*35:03 **not** A\*11:01  
**AIFQSSMTK/HLA-A\*11:01** Predicted A\*11:01, confirmed A\*11:01, already on 'A list'

B

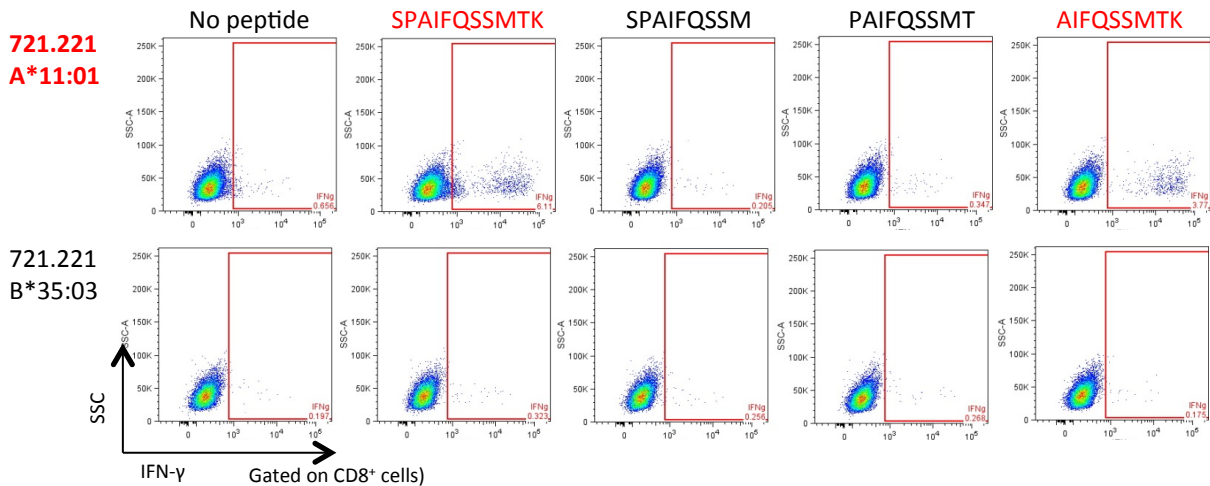


C



D

**VID 421 - HLA restriction of HC088 STCL on HLA-transfected 721.221**



**S8 Fig. HC088 GSPAIFQSSMTKILE (Pol) - Definition of CD8<sup>+</sup> T-cell determinants.** (A) The box. 15-mer peptide HC088 was recognized by volunteer 421 of the indicated HLA type. Optimal peptides and determined HLA restriction are shown below. Volunteer's lymphocytes were expanded by stimulation with peptide HC088 for 10 days to establish an STCL, which was subjected to ICS using serially truncated (B), and overlapping 9-mer (C) peptides monitoring IFN- $\gamma$  (green) and TNF- $\alpha$  (orange) production and surface expression of CD107a (pink). In (B), arrows next to an amino acid indicate the peptide-terminal amino acid residue required for efficient peptide recognition. (D) 721.221 cells expressing the HLA-A\*11:01 (top) and HLA-B\*35:03 (bottom) alleles were used to determine the HLA restriction of overlapping 9-mer peptides.