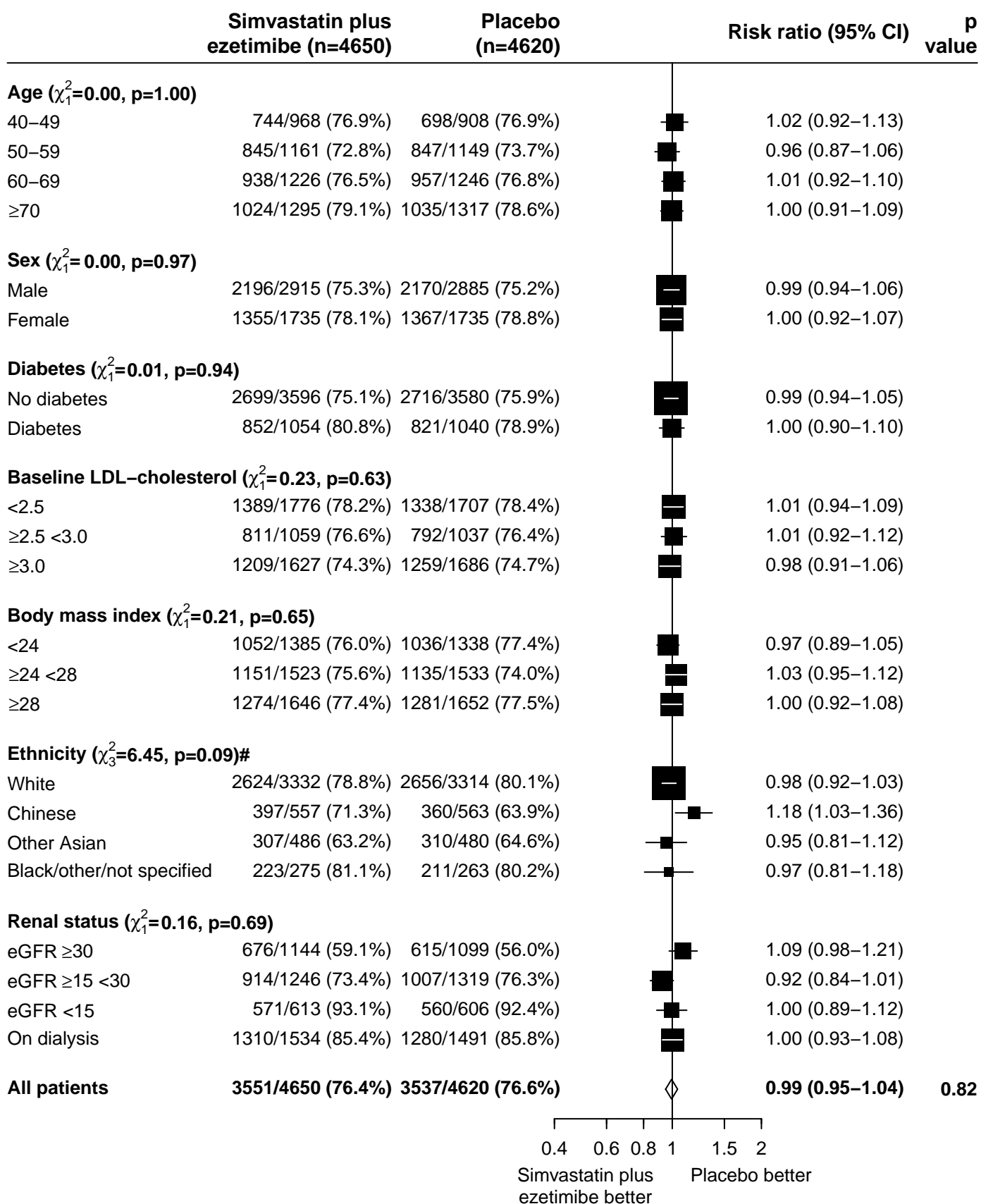
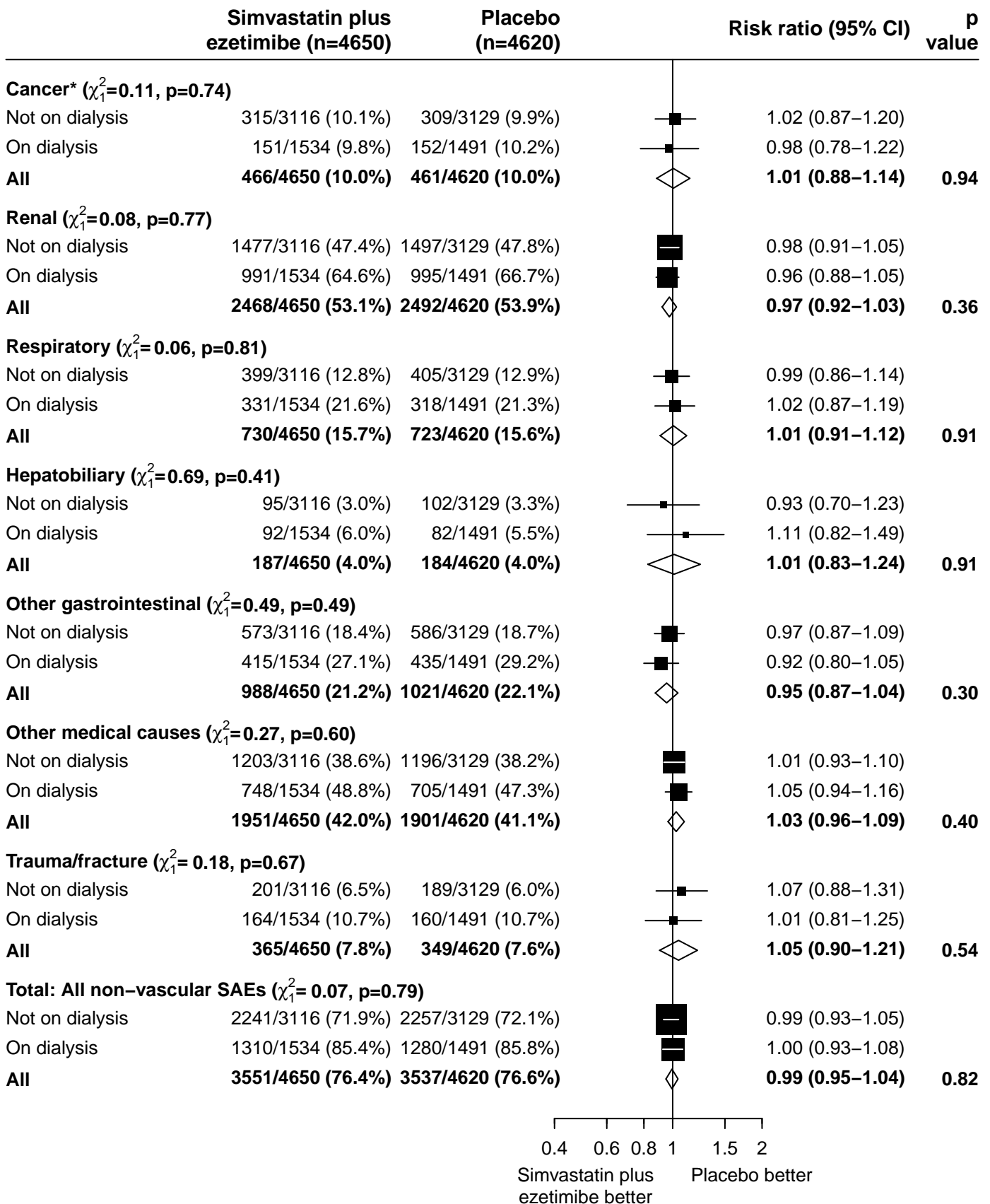


Webfigure 1: All non-vascular SAEs, by particular baseline characteristics



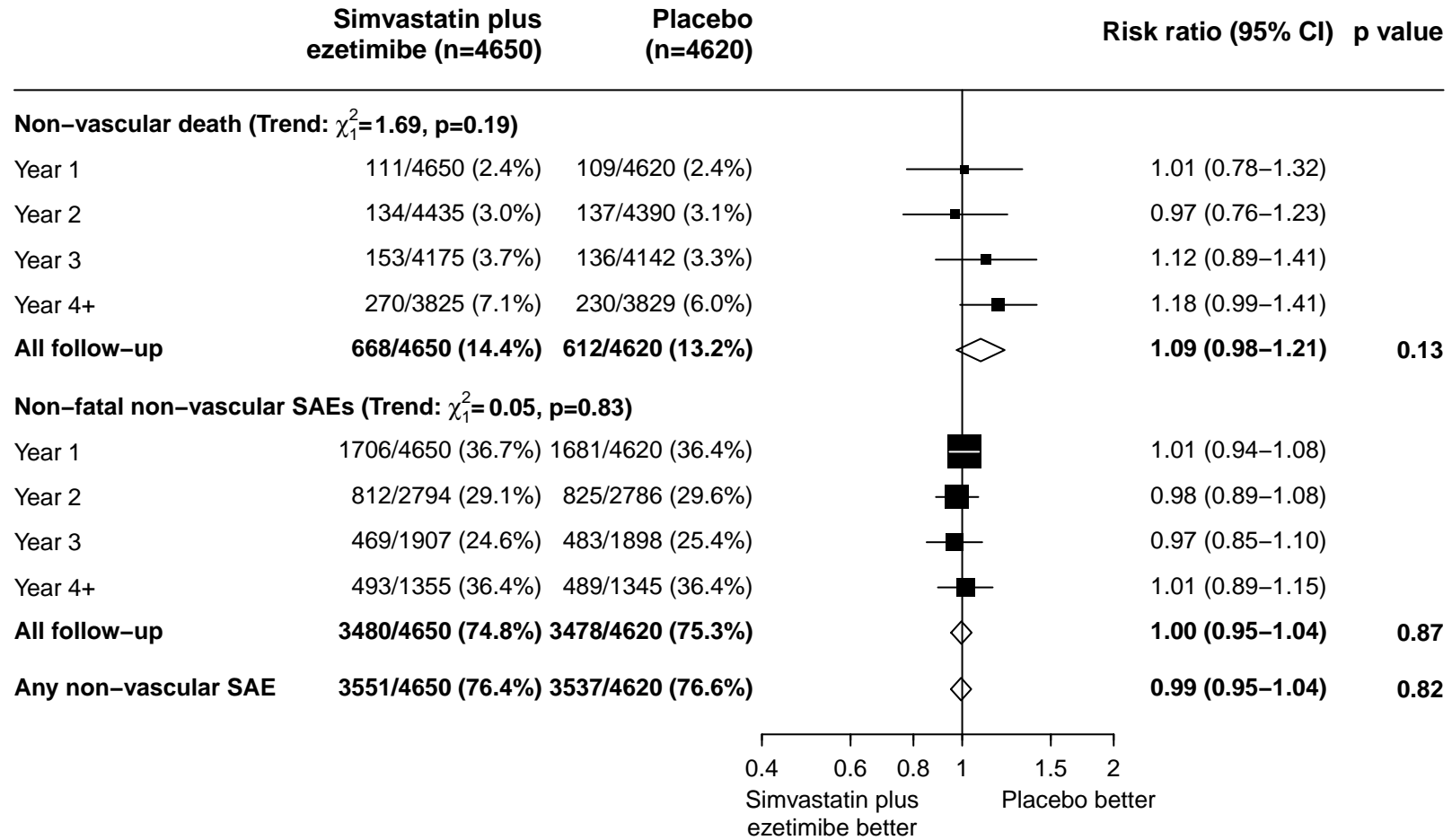
SAE=serious adverse event. eGFR = estimated glomerular filtration rate. #Subgroup analysis defined retrospectively.

Webfigure 2: All non-vascular SAEs, by system of disease and dialysis status



SAE=serious adverse event. *Includes cancer complications and deaths from pre-randomization cancers.

Webfigure 3: All non-vascular SAEs, by duration of follow-up



SAE=serious adverse event.