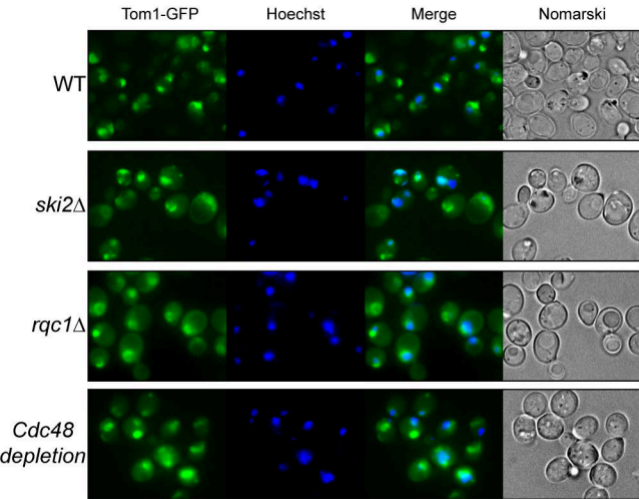


# Supplemental Materials

*Molecular Biology of the Cell*

Defenouillère et al.

**SUPPLEMENTAL FIGURE 1.** Tom1 cellular localization does not depend on the presence of Rqc1, Ski2 or Cdc48. WT, *rqc1* $\Delta$ , *ski2* $\Delta$  strains and strain depleted for Cdc48 for 13h, expressing Tom1-GFP fusion protein were analyzed by fluorescence microscopy. Yeast cells are shown on the right panels (Nomarski), GFP and Hoechst fluorescent signals are displayed respectively in the left and middle-left panels and merged in the middle-right panels.



**Figure. S1**