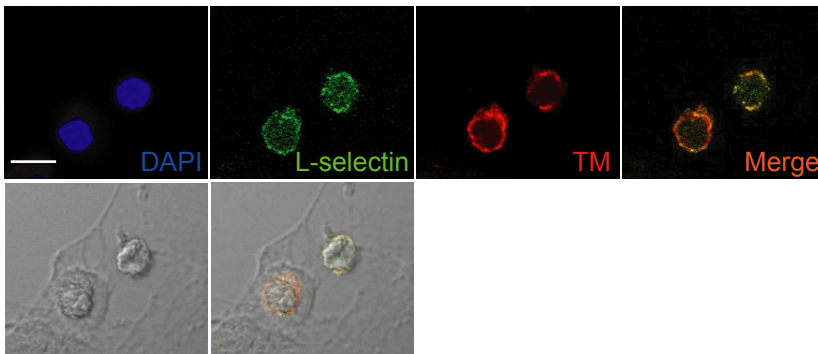
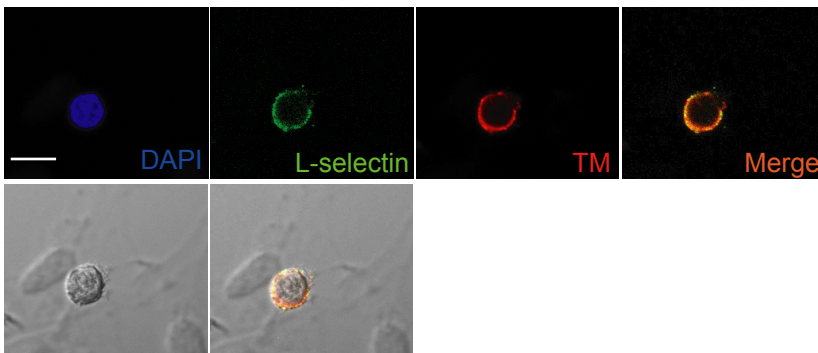
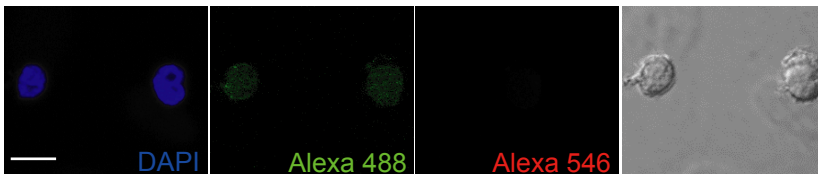
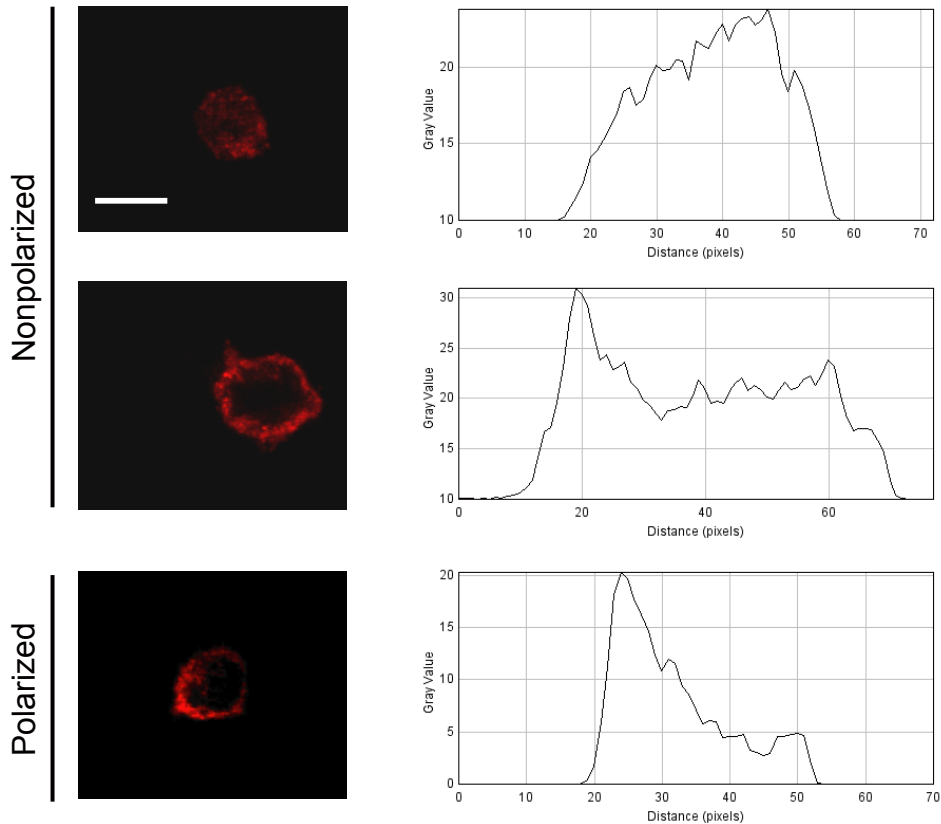


Monocytic thrombomodulin promotes cell adhesion through interacting with its ligand, Lewis^y.

Wei-Ling Lin, Chia-Chi Chen, Guey-Yueh Shi, Chih-Yuan Ma,
Chuan-Fa Chang, and Hua-Lin Wu

a**b****c**

Supplementary Figure 1. Immunofluorescence analysis of adherent THP-1 cells on the endothelium. (a-b) Fluorescence images of representative adherent THP-1 cells on the endothelium. Cells with nonpolarized (a) or polarized distribution (b) of L-selectin (green) and TM (red) are shown. Nuclei were counterstained with DAPI (blue). The lower right panels show the merged fluorescence and bright-field images for visualization of adherent THP-1 cells on the endothelium. Scale bar: 10 μ m. (c) Fluorescence images of representative adherent THP-1 cells stained with control antibodies (Con IgG) and visualized using secondary antibodies conjugated with Alexa Fluor 488 or 546. Nuclei were counterstained with DAPI (blue). The right panel shows the bright-field image.



Supplemental figure 2. Differential expression of TM in adherent THP-1 cells.

Confocal microscopy images (left panels) and lateral intensity plots (right panels) of representative adherent THP-1 cells with nonpolarized or polarized distribution of TM. A gray value within a discrete region of at least two-fold greater than the rest of the cell body was considered polarized. Scale bar: 10 μm .