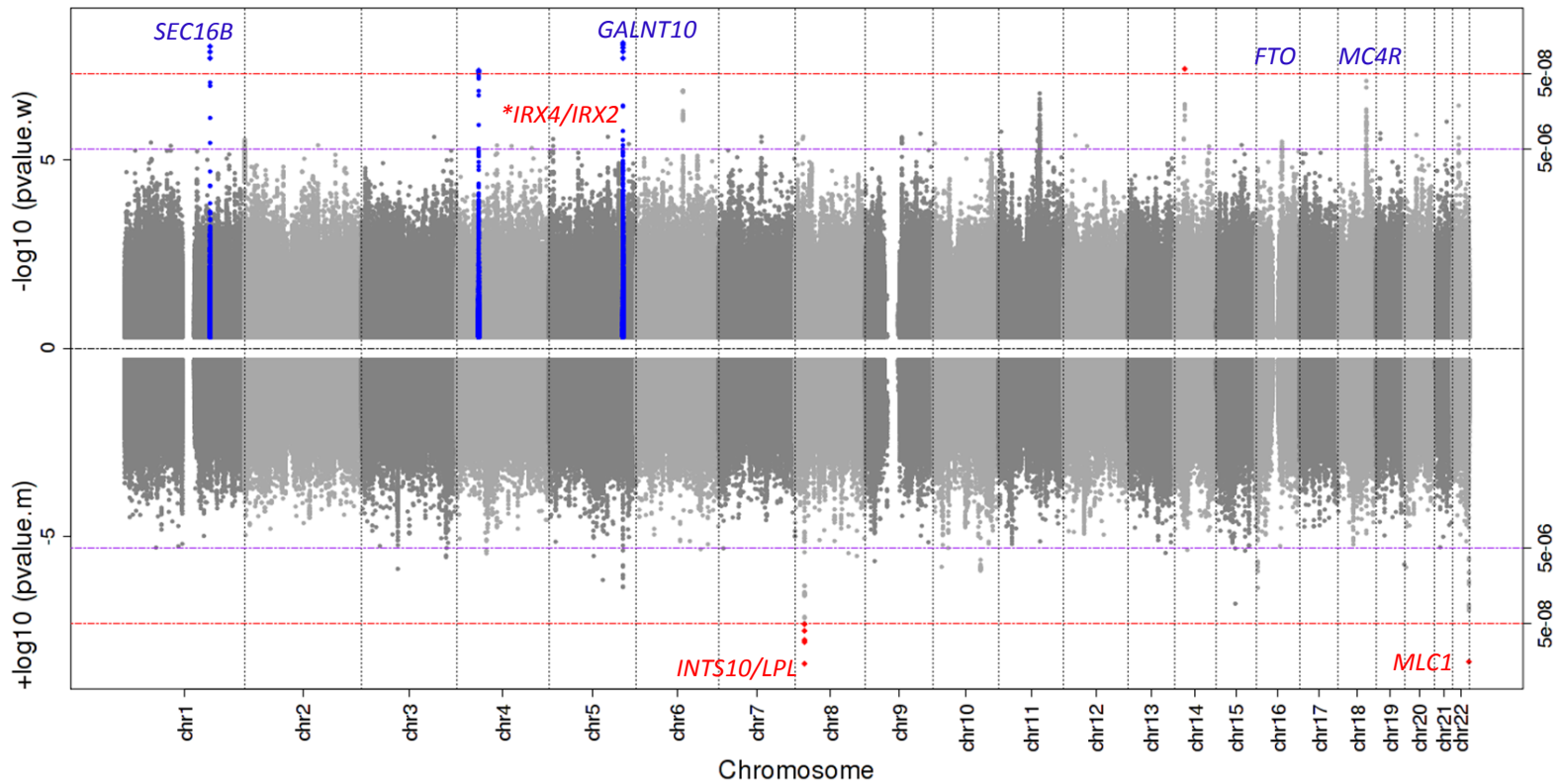


BMI, Women only (top) and Men only (bottom)

Known loci

Novel SNPs, Pvalue<5e-08



* *IRX4/IRX2* (chromosome 5, position 2,177,693), *FTO* (chromosome 16, position 53,828,066), and *MC4R* (chromosome 18, position 57,829,135) were genome-wide significant after combining discovery with replication results.