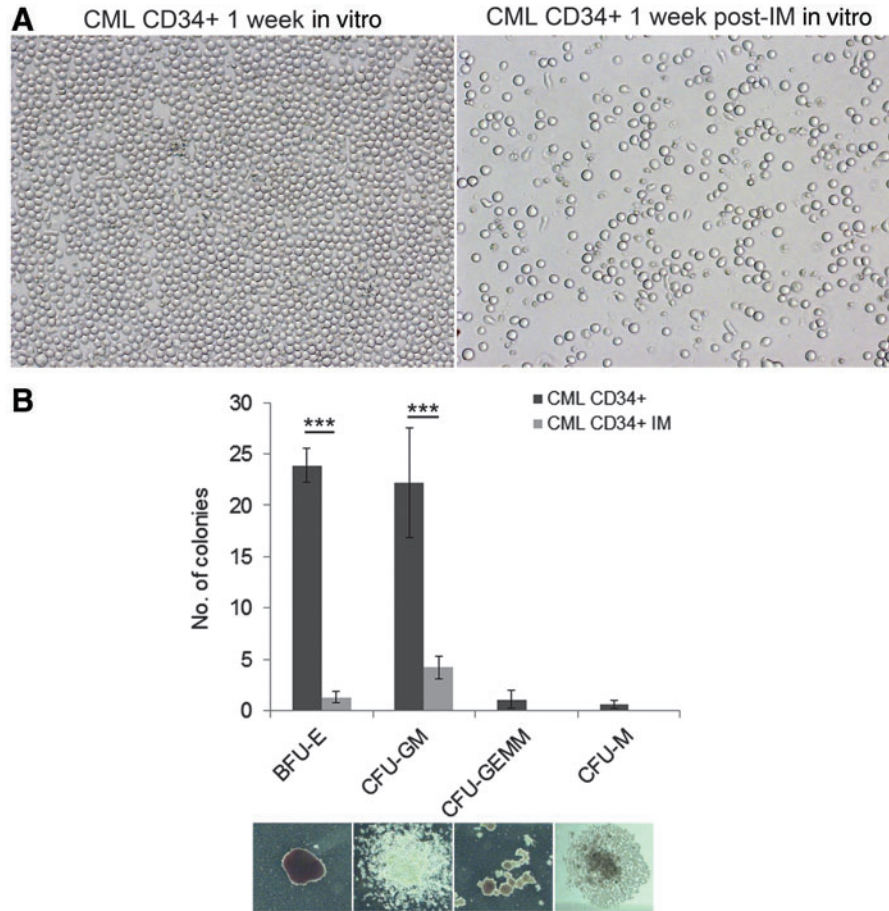


## Supplementary Data



**SUPPLEMENTARY FIG. S1.** (A) Representative DIC images of CML CD34<sup>+</sup> cells cultured without (*left*) and with (*right*) 5  $\mu$ M of IM for 1 week. Cells were cultured in serum-free stem cell growth supporting media in the presence of cytokines as indicated in Materials and Methods. (B) Colonies derived from burst-forming units erythroid (BFU-E), multilineage granulopoietic, erythroid, macrophage, and megakaryocytic colony-forming units (CFU-GEMM), granulocyte-macrophage colony-forming units (CFU-GM), and macrophage colony-forming units (CFU-M) were scored in situ after 14 days of incubation of CML CD34<sup>+</sup> cells in methylcellulose-based medium with cytokines in the presence or absence of 5  $\mu$ M of IM. CML CD34<sup>+</sup> cells isolated from the bone marrow of three CML patients ( $n=3$ ) prior exposure to IM were used. Cells were plated in quadruplicates. Representative micrographs of scored colonies are shown. \*\*\* $P < 0.0001$ .