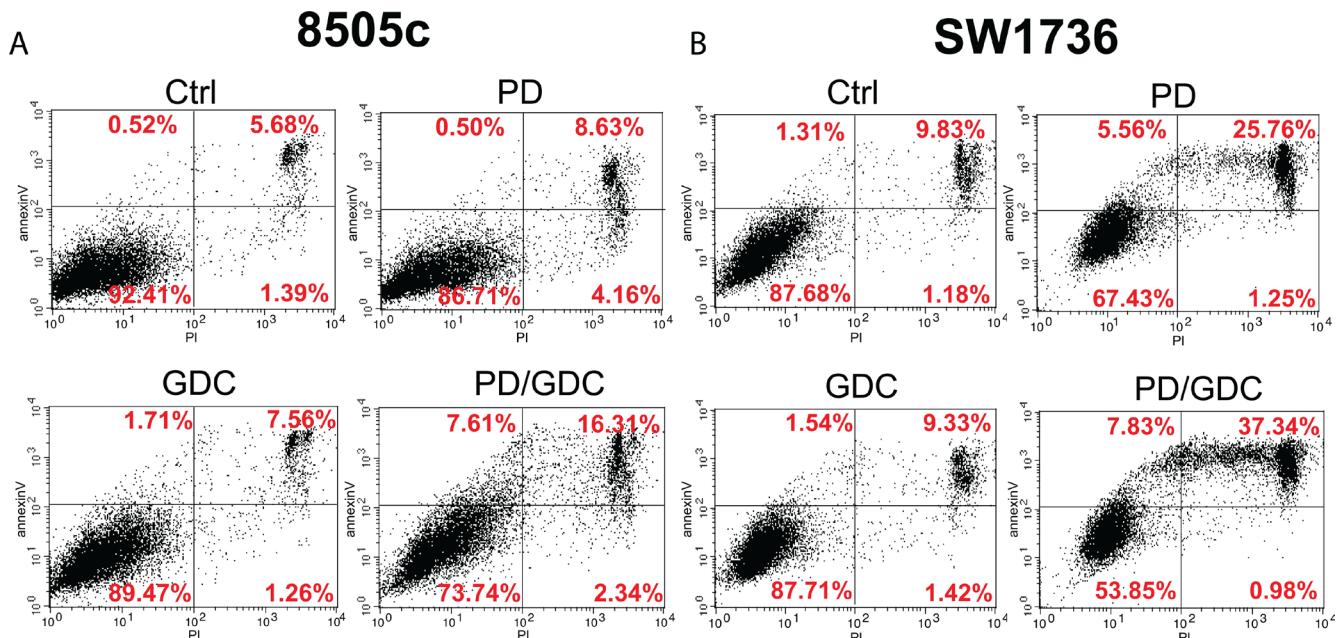


# Combined MEK and Pi3'-kinase inhibition reveals synergy in targeting thyroid cancer *in vitro* and *in vivo*

## Supplementary Materials



**Supplementary Figure 1: Drug combination synergistically induces apoptosis only after 48 h in 8505c and SW1736 anaplastic thyroid cancer cell lines.** (A–B) Flow cytometry analysis of 8505c and Sw1736 cell lines treated with 100 nM of PD-325901, 1 μM of GDC-0941 or the combination for 48 h stained with FITC annexinV and Propidium iodine.