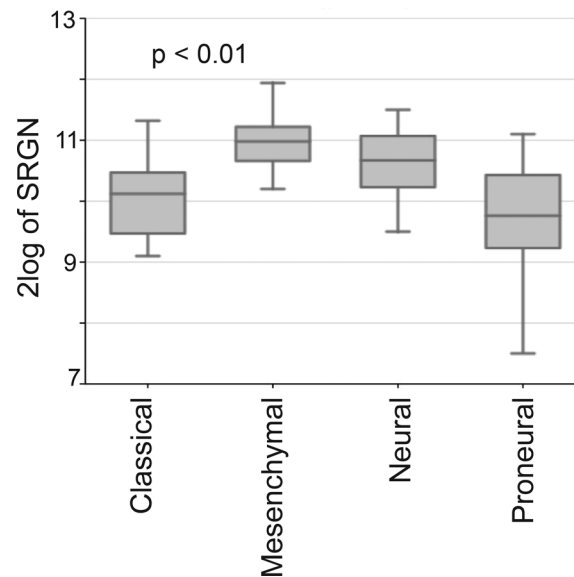
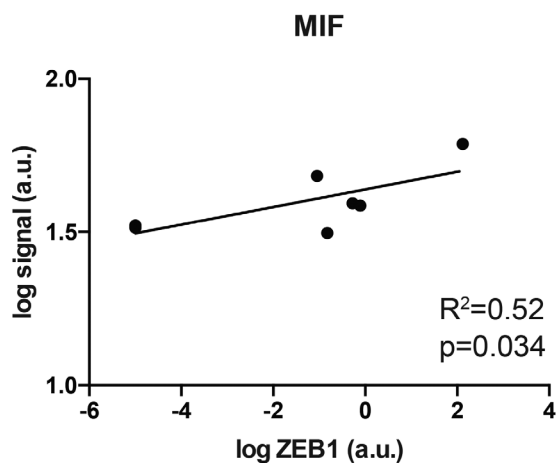
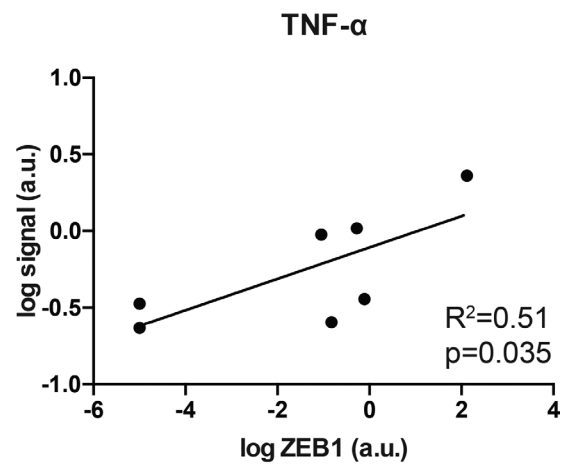
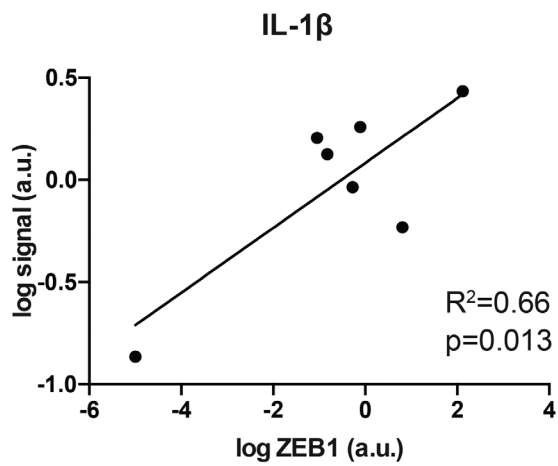
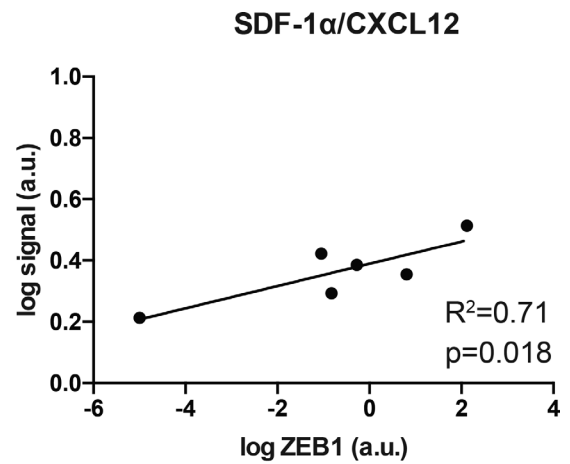
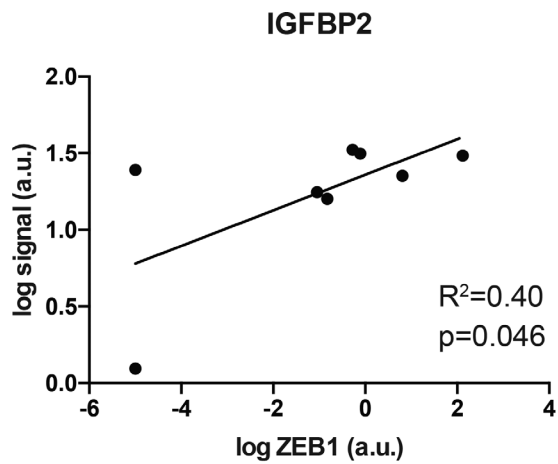


Serglycin as a potential biomarker for glioma: association of serglycin expression, extent of mast cell recruitment and glioblastoma progression

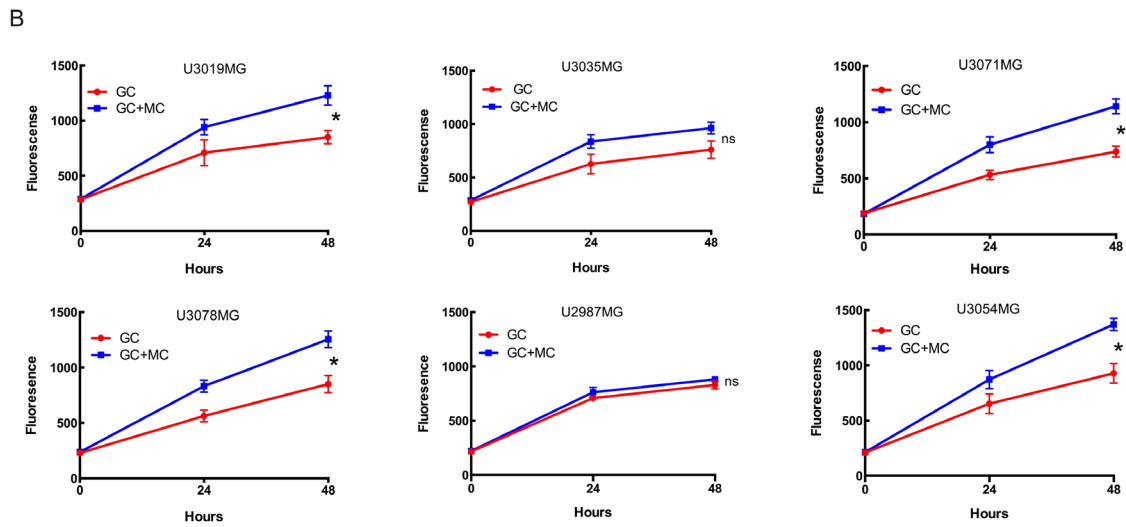
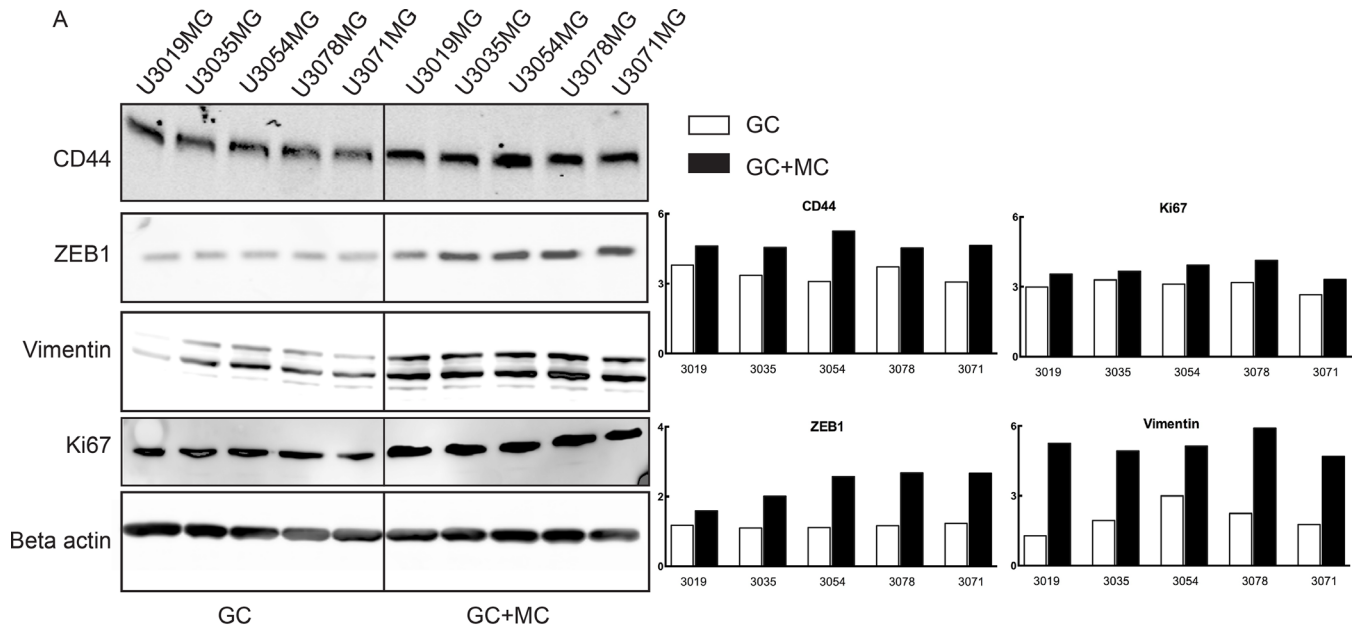
Supplementary Materials



Supplementary Figure 1: Expression levels of SRGN in the four GBM subtypes show significant variation. Clinical data for the patients are from the TCGA portal and the analysis is done on the R2 genomic analysis platform. Difference in expression between groups was analysed using ANOVA. $p < 0.01$.



Supplementary Figure 2: Analysis of GBM patient tumor specimens demonstrated that levels of pro-inflammatory cytokine SDF-1 α (CXCL 12), IGFBP2, IL-1 β , TNF- α and MIF correlate significantly with ZEB1.



Supplementary Figure 3: (A) Western blot analysis showing expression levels of beta actin, Ki67, vimentin, ZEB1 and CD44 in the glioma cells before and after co-culture (B) CyQuant NF cell proliferation assay performed with the glioma cell lines grown alone or in co-culture with LAD2 cells. GC = glioma cells, GC + MC = glioma cells co-cultured with LAD2 cells. * $p < 0.05$.