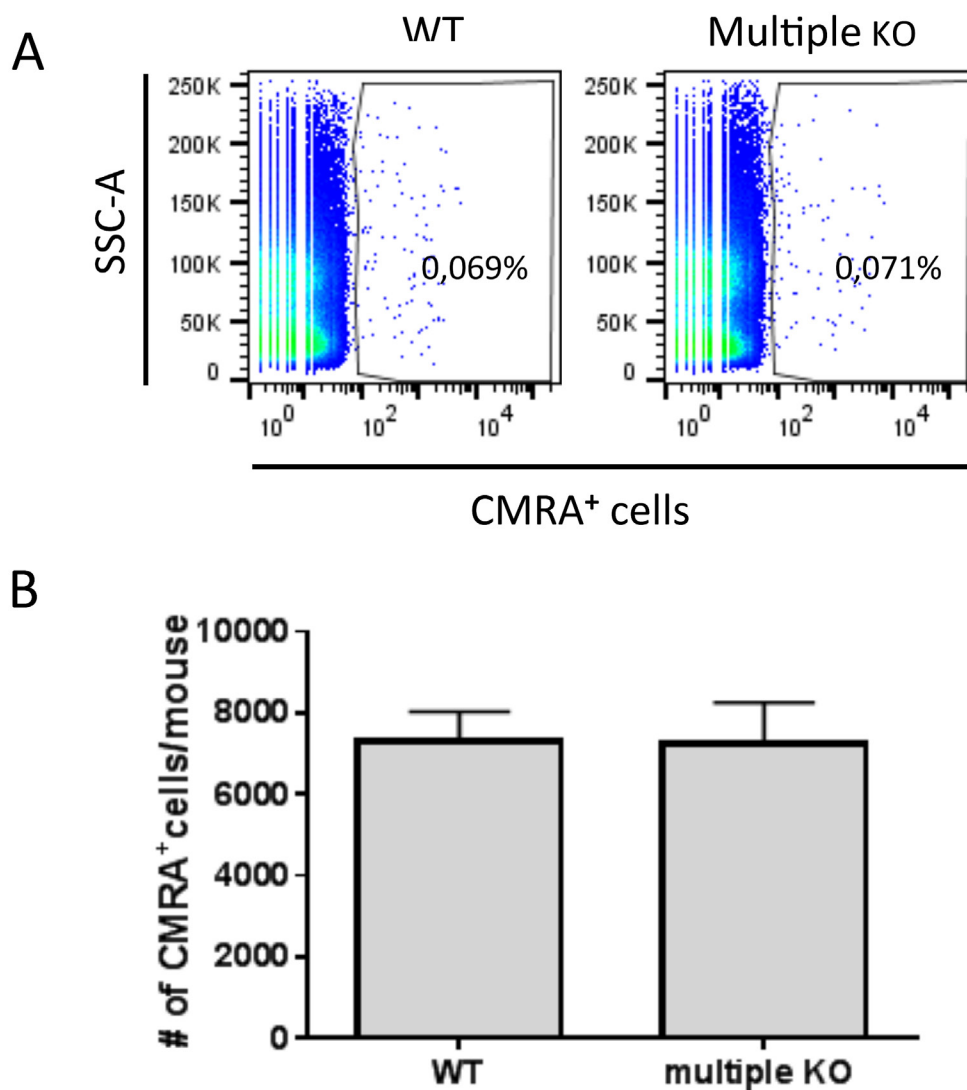


# The combined action of mast cell chymase, tryptase and carboxypeptidase A3 protects against melanoma colonization of the lung

## SUPPLEMENTARY FIGURE



**Supplementary Figure 1: Similar early colonization of tumor cells in lungs of WT and multiple KO mice.** 0.25 million of B16F10 cells pre-stained with cell tracker orange CMRA were injected i.v. into WT or into multiple KO mice. Nine hours post injection, lungs were analyzed for the presence of CMRA<sup>+</sup> cells by flow cytometry. Representative dot plots **A.** and numbers **B.** of CMRA<sup>+</sup> cells, presented as mean ± SEM (n=4 /group).