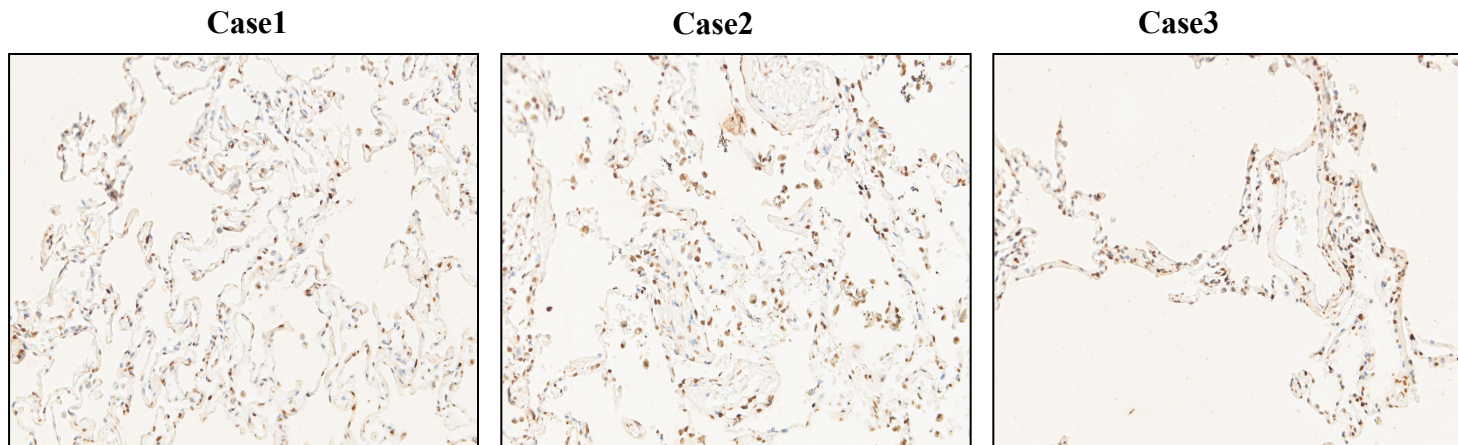


Supplementary Figure 2

A



B

COX-2 protein expression in 75 lung cancer patients from T stage

T Stage	-/+ (%)	+/+/+/+/+/+ (%)	P Value
T1	5 (23.8)	16 (76.2)	
T2	13 (31.7)	28 (68.3)	0.553
T3	4 (50)	4 (50)	
T4	1 (20)	4 (80)	