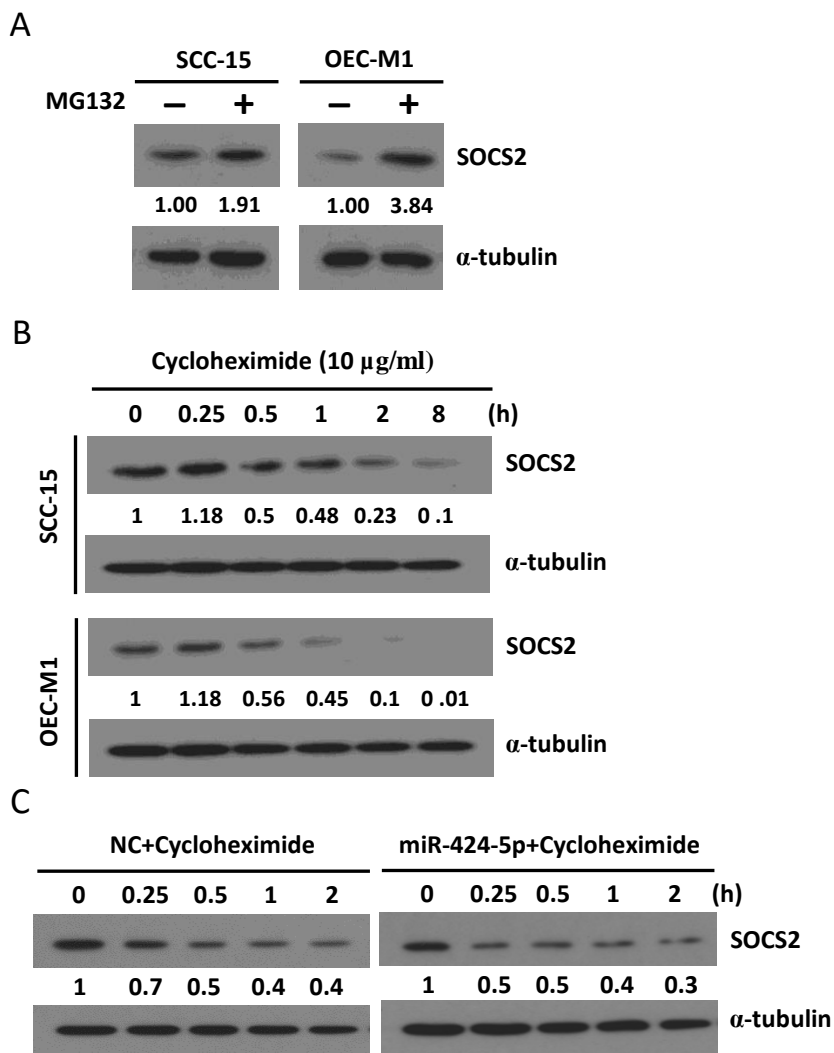


Supplementary Figure 4



Supplementary Figure 4 – Effects of MG132 and cycloheximide on SOCS2 stability.

A: Western blot analysis of the SOCS2 protein levels in SCC-15 and OEC-M1 cells treated with or without 20 μ M of MG132 for 12 h. **B:** Western blot analysis of the SOCS2 protein levels in SCC-15 and OEC-M1 cells treated with or without 10 μ g/ml of cycloheximide for the indicated times. **C:** SCC-15 cells were transfected with miR-424-5p mimics (50 nM) or scramble control (NC) for 24 h. Cells were then treated with cycloheximide (10 μ g/ml) for the indicated hours, and western blotting was performed. All western blotting experiments were used α -tubulin as protein loading control. The numerical values for protein band intensities were corrected with the values for the loading control α -tubulin bands.