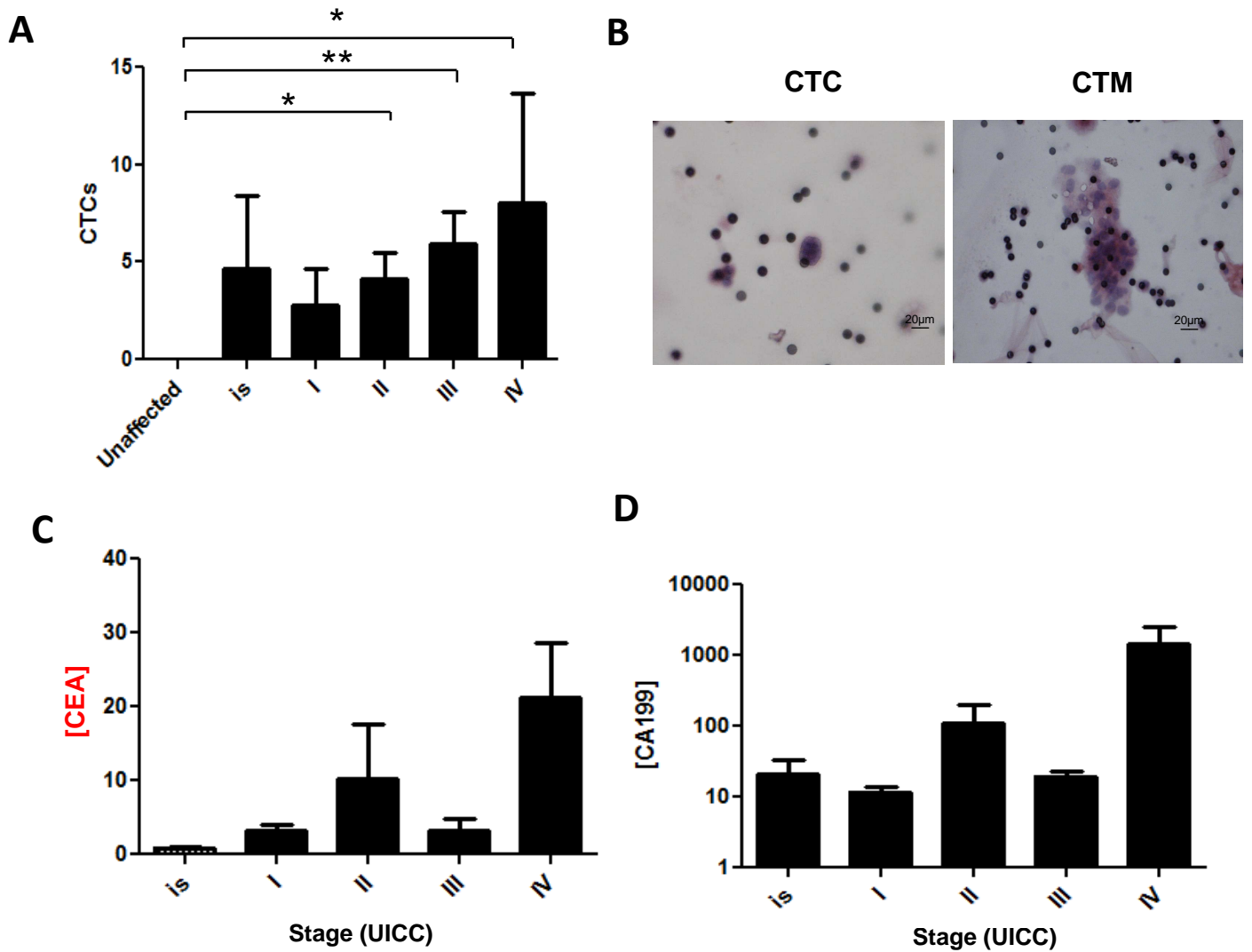


Supp Data 2



Supp. Data 2. Relation between the number of circulating tumor cells (CTCs) and serum tumor markers and disease stage (UICC guidelines). **A**, Number of CTCs per 3 mL blood. **B**, Cytology performed on filters showing representative images of CTCs or CTMs (circulating tumor microemboli) for patient 5 and patient 8, respectively. Hematoxylin & Eosin staining. **C**, Serum concentration of the tumor markers CEA and **D**, CA19.9 (normal levels of CEA < 5 µg/L and of CA19.9, 37 kU/L). Statistics were performed by the Kruskal-Wallis test followed by a multiple comparison test with significance $\alpha < 0,05$ (*) or $< 0,01$ (**).