

Figure S1

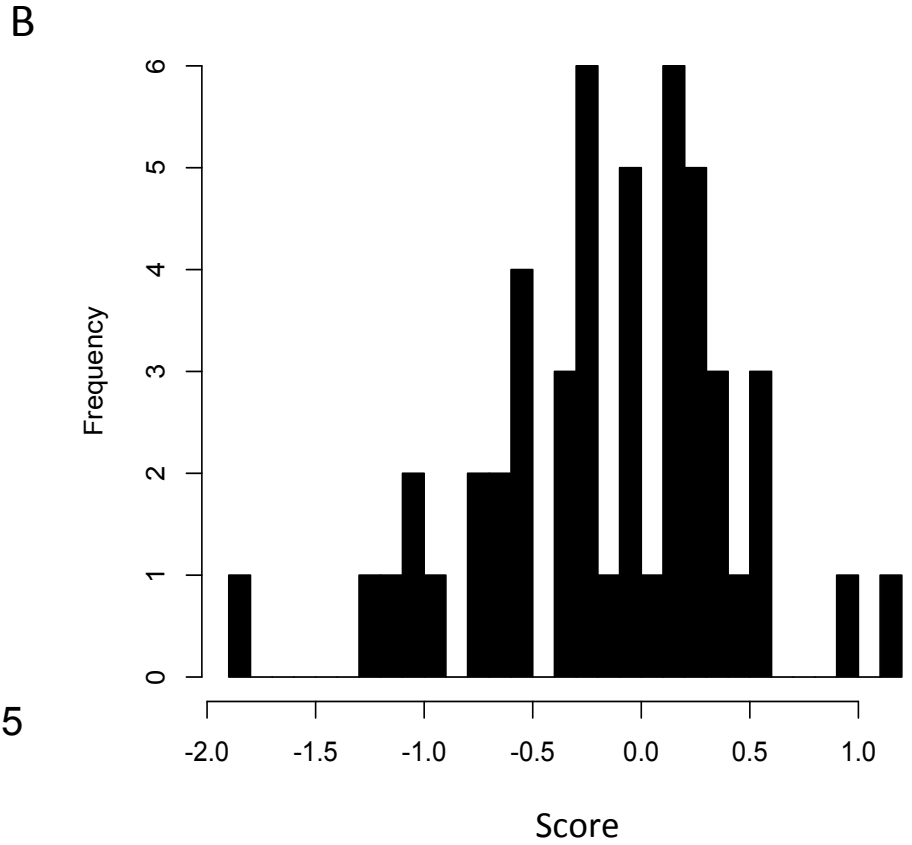
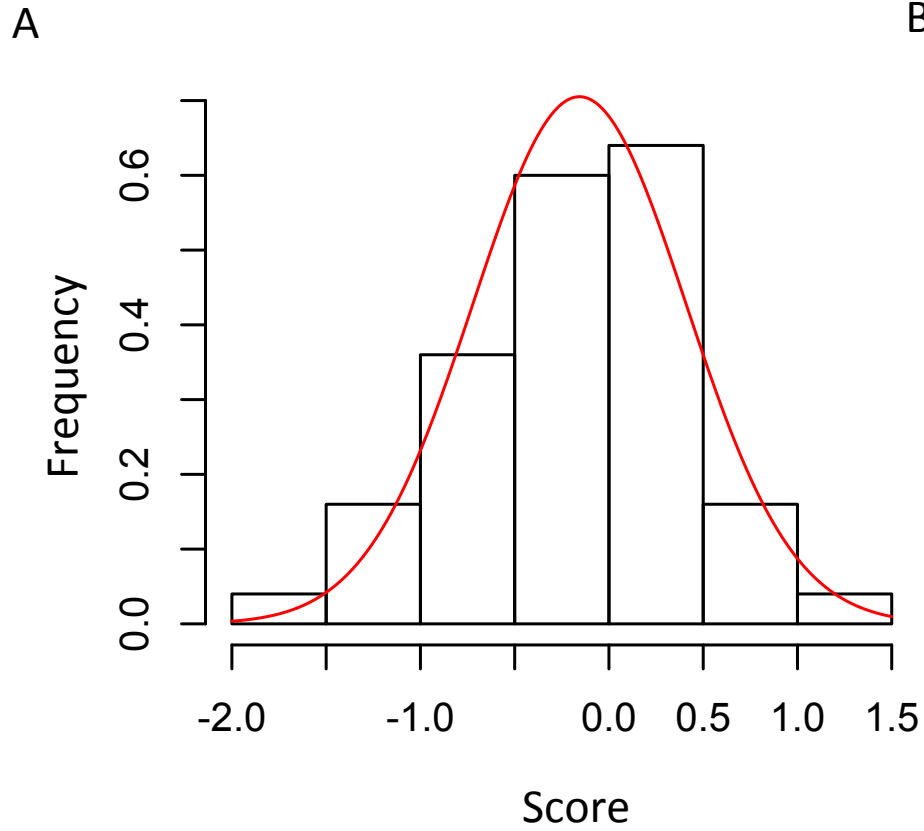


Table S1

| Characteristic | Number of patients (n=473) |
|-----------------------------------------------------------|---------------------------------------|
| Age (median=60) | |
| <60 years | 224 |
| ≥60 years | 249 |
| Gender | |
| Male | 290 |
| Female | 183 |
| Karnovsky Performance score | |
| ≤70 | 207 |
| >70 | 150 |
| Not available | 116 |
| Days to death/ last follow-up (median=9.73 months) | |
| <450 days | 331 |
| ≥450 days | 142 |
| <30 days | 26 |

Table S2

| Minimum value on graph | Risk score at minimum | Hazard ratio of log-rank | 95% confidence intervals | p value |
|------------------------|-----------------------|--------------------------|--------------------------|----------|
| 1 | -1.54 | NA | | |
| 2 | -0.87 | 0.1 | CI=0.01-0.77 | 0.027 |
| 3 | -0.46 | 0.15 | CI=0.05-0.45 | 7.40E-04 |
| 4 | 0.00 | 0.16 | CI=0.07-0.36 | 1.20E-05 |
| 5 | 0.79 | 0.09 | CI=0.01-0.95 | 0.046 |

Table S3

Multivariate cox regression for training set

| | Number of subjects | HR | 95% CI | p-value |
|-----------------|---------------------------|-----------|---------------|----------------|
| miR profile | 50 | 0.118 | 0.04-0.32 | 2.40E-05 |
| No information | 8 | 0.95 | 0.06-15.41 | 9.70E-01 |
| Adjuvant tmt | 8 | 1.016 | 0.11-9.11 | 9.90E-01 |
| Progression tmt | 29 | 1.956 | 0.25-15.60 | 5.30E-01 |
| Recurrence tmt | 5 | 1.019 | 0.08-12.43 | 9.90E-01 |

Multivariate cox regression for test set

| | Number of subjects | HR | 95% CI | p-value |
|-----------------|---------------------------|-----------|---------------|----------------|
| miR profile | 37 | 4.36E-01 | 0.04-1.31 | 0.14 |
| No information | 11 | 1.62E-08 | 0-inf | 1 |
| Adjuvant tmt | 8 | 2.20E+00 | 0.26-18.40 | 0.47 |
| Progression tmt | 16 | 8.16E-01 | 0.09-7.23 | 0.86 |
| Recurrence tmt | 2 | 1.30E-08 | 0-inf | 1 |

Figure S2

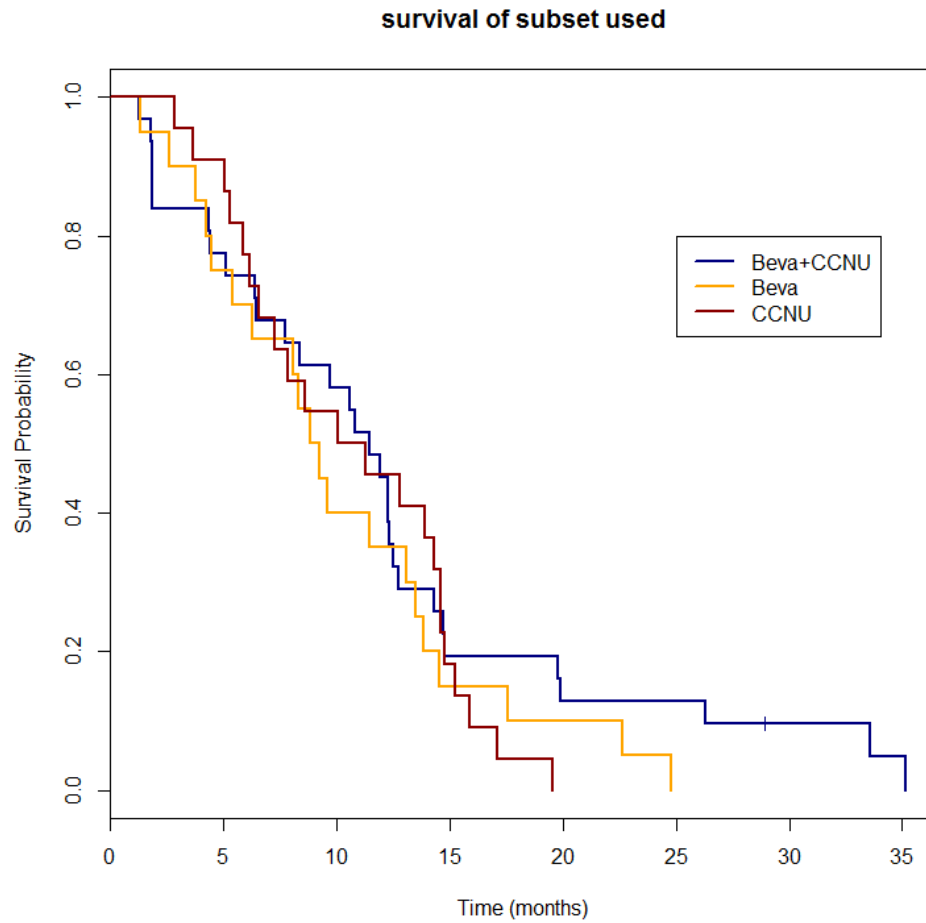
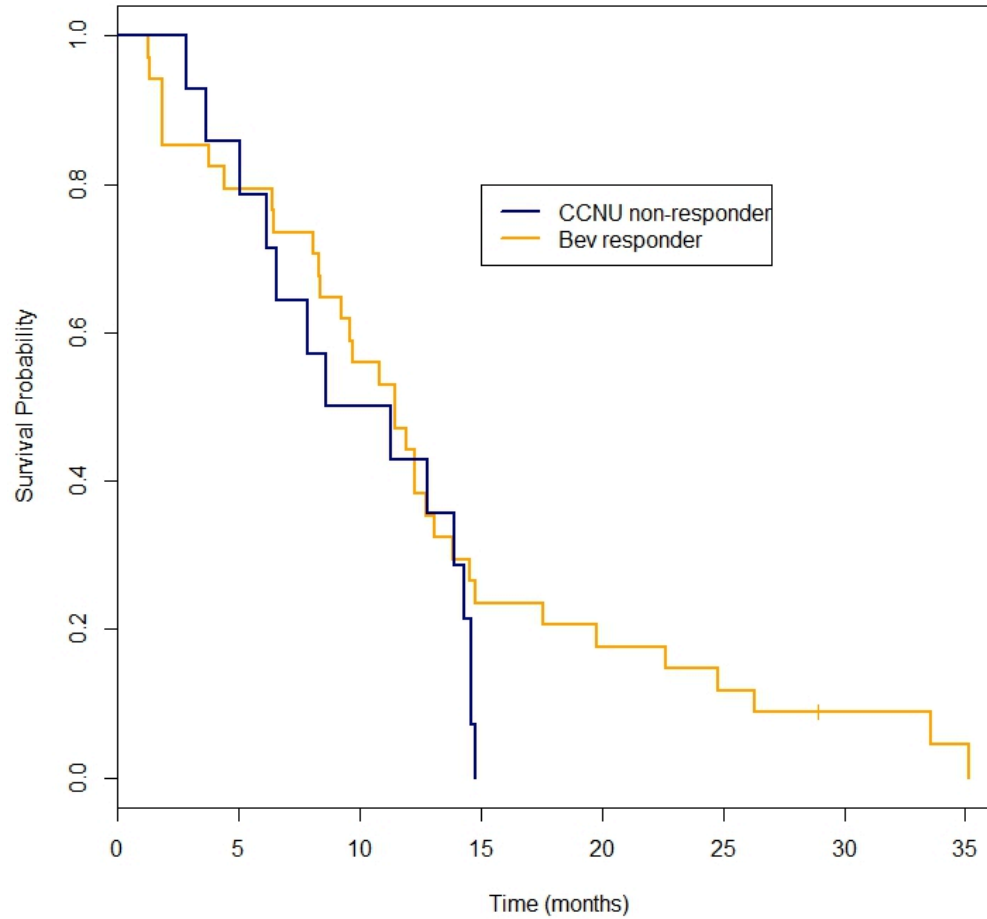


Figure S3



HR=1.12

95% CI 0.51- 2.49

p=0.77