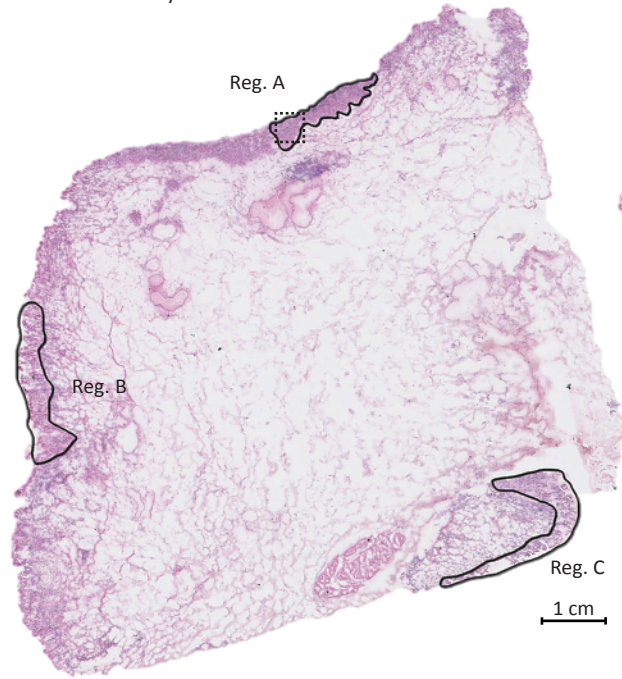
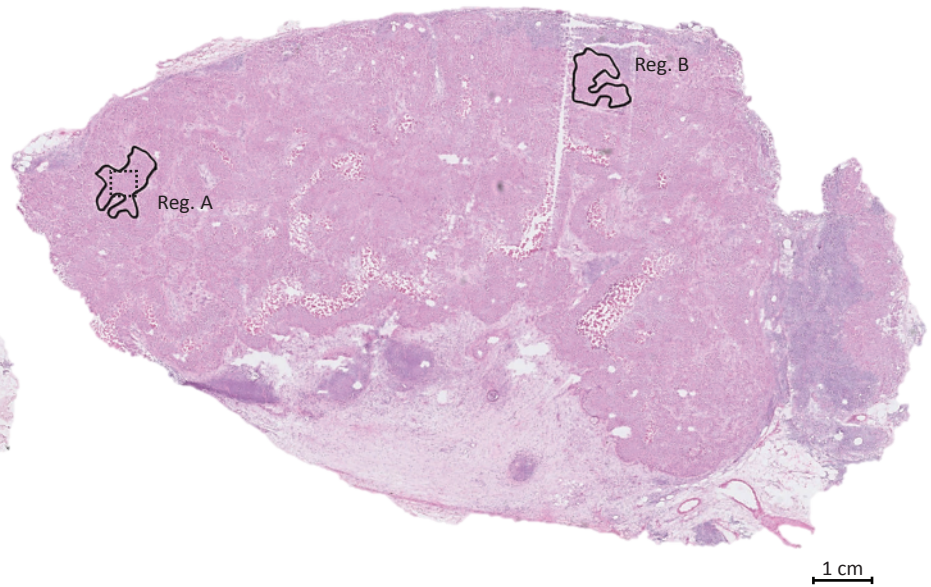


Supplementary Figure S3

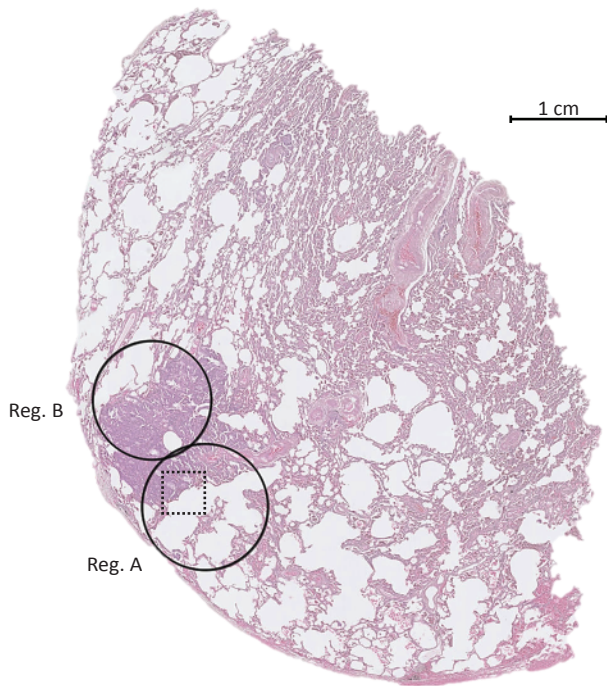
Patient 3 Primary Tumour



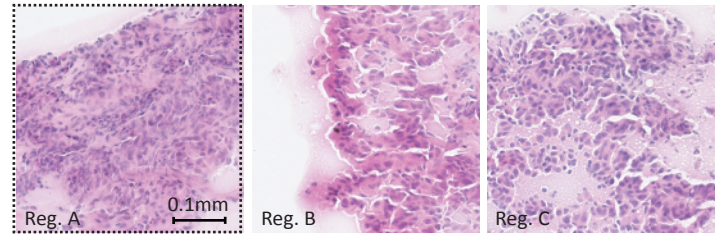
Patient 3 Lymph Node Metastasis



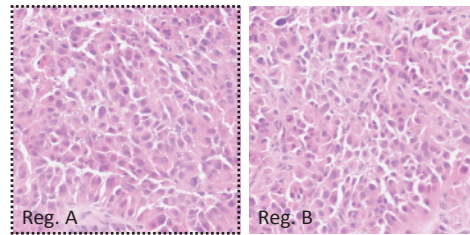
Patient 3 Distant Metastasis - Lung



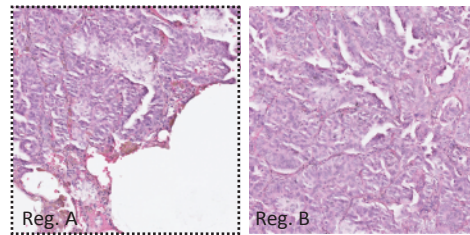
Primary Tumour



Lymph Node Metastasis



Distant Metastasis



Supplementary Figure S3 - Laser micro dissection overview – Patient 3. Presented is the primary tumour (FF), the lymph node metastasis (FF), and distant metastasis (FFPE) in the lung from patient 3. For FFPE samples, small cellular regions were obtained by punctures indicated by circles whereas for FF samples, regions were procured by laser micro dissections. Images of each subpopulation at 40x magnification are presented and a box placed in region A in each sample for comparison. Scalebars are indicated in macro-figures.