

Appendix S2

Pollen profiles

Hradec nad Svitavou

49° 43' 0.1'' N, 16°28'21.1'' E, 427 m a.s.l.

Pollen analyst Helena Svitavská Svobodová

Jedlová

49°39'53.6'' N, 16°18'6.6'' E, 602 m a.s.l.

Pollen analyst Helena Svitavská Svobodová

Kameničky

49°44'19.2'' N, 15°57'49.1'' E. 629 m a.s.l.

Pollen analyst Eliška Rybničková

Lubenský les

49°45'50.5'' N, 16°09'58.5'' E, 634 m a.s.l.

Pollen analyst Markéta G. Švarcová

Šestidomí

49°39'44.8'' N, 16°19'25.9'' E, 599 m a.s.l.

Pollen analyst Markéta G. Švarcová

Řásná

49°13'38.3'' N, 15 °22'28,3'' E, 679 m a.s.l.

Pollen analyst Petr Kuneš

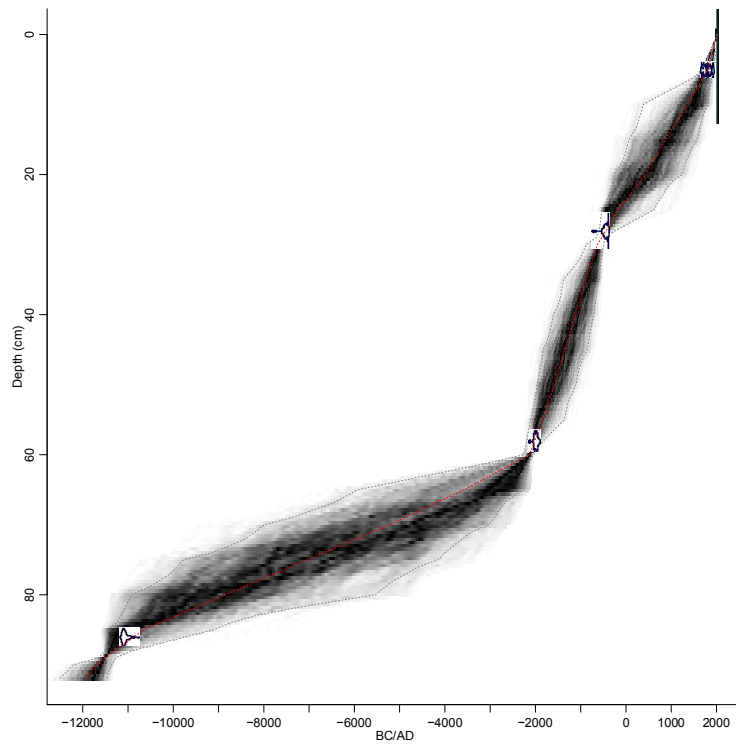
Dated layers

<i>Site name</i>	<i>Depth [cm]</i>	<i>¹⁴C age</i>	<i>Laboratory number</i>	<i>Material dated</i>
Hradec nad Svitavou	5	140±20	UG-20511	bulk peat sample
Hradec nad Svitavou	28	2380±20	UG-20512	bulk peat sample
Hradec nad Svitavou	58	3620±20	UG-20513	bulk peat sample
Hradec nad Svitavou	86	11130±30	UG-20514	bulk peat sample
Jedlová	9	1660±25	UG-18367	bulk peat sample
Jedlová	23	6370±30	UG-18368	bulk peat sample
Jedlová	40	8030±30	UG-15645	bulk peat sample
Jedlová	55	8620±30	UG-15646	bulk peat sample
Jedlová	75	9000±30	UG-15647	bulk peat sample
Jedlová	100	9160±30	UG-15648	wood

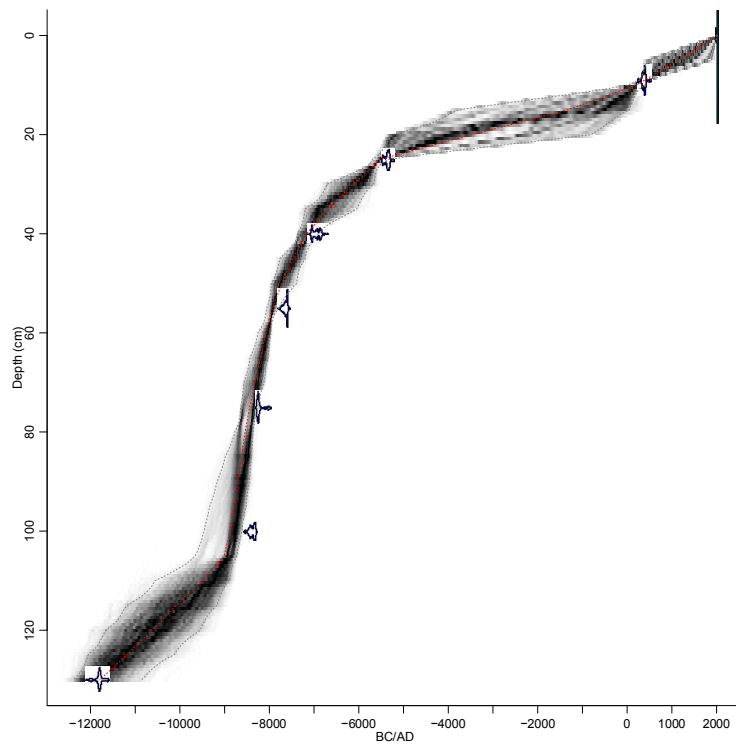
Jedlová	105	11270±30	UG-15649	bulk peat sample
Jedlová	130	11930±30	UG-15650	bulk peat sample
Kameničky	15.25	1830±150	Hv-12961	bulk peat sample
Kameničky	20.5	2140±80	Hv-11529	bulk peat sample
Kameničky	30.5	4160±105	Hv-11530	bulk peat sample
Kameničky	45.5	6100±105	Hv-11531	bulk peat sample
Kameničky	60.5	8080±190	Hv-11532	bulk peat sample
Kameničky	65.25	8145±295	Hv-12962	bulk peat sample
Kameničky	70.5	7580±315	Hv-11533	bulk peat sample
Kameničky	95	9985±220	Hv-11534	bulk peat sample
Kameničky	122.5	11070±245	Hv-11536	bulk peat sample
Lubenský les	29	3360±25	UG-15651	bulk peat sample
Lubenský les	64	5230±40	Poz-55298	twigs of pine
Lubenský les	67	6440±25	UG-15652	bulk peat sample
Lubenský les	77	9170±30	UG-15653	bulk peat sample
Lubenský les	82	5390±40	Poz-55299	twigs of pine
Lubenský les	103	10060±30	UG-15654	bulk peat sample
Lubenský les	114	4280±50	Poz-55300	plant remains
Lubenský les	130	11100±60	Poz-51945	terrestrial plant seeds
Šestidomí	56	9070±30	UG-15658	bulk peat sample
Šestidomí	102	9840±30	UG-15659	bulk peat sample
Šestidomí	126	9910±30	UG-15660	bulk peat sample
Šestidomí	164	10850±30	UG-15661	bulk peat sample
Šestidomí	217	12490±60	Poz-51946	terrestrial plant seeds
Řásná	40.5	160±20	UG-19581	plant seeds (<i>Betula</i> , <i>Urtica</i> , <i>Carex</i>) + branch
Řásná	80.5	890±25	UG-19580	spruce needle, <i>Rubus</i> fragment
Řásná	102.5	5830±30	UG-22641	fragment of wood
Řásná	135	6310±30	UG-20897	wood
Řásná	162.25	6960±30	UG-20898	wood
Řásná	179.5	7690±30	UG-19579	<i>Comarum</i> seeds
Řásná	229	6880±40	UG-19578	branches (wood)
Řásná	350	8930±30	UG-19577	<i>Pinus</i> seed, <i>Betula</i> scale
Řásná	390.5	9290±30	UG-19576	plant remains (<i>Phragmites</i> , <i>Cyperus fuscus</i>)
Řásná	419.5	13180±35	UG-22642	bulk peat sample

Age-depth models constructed for each pollen profile

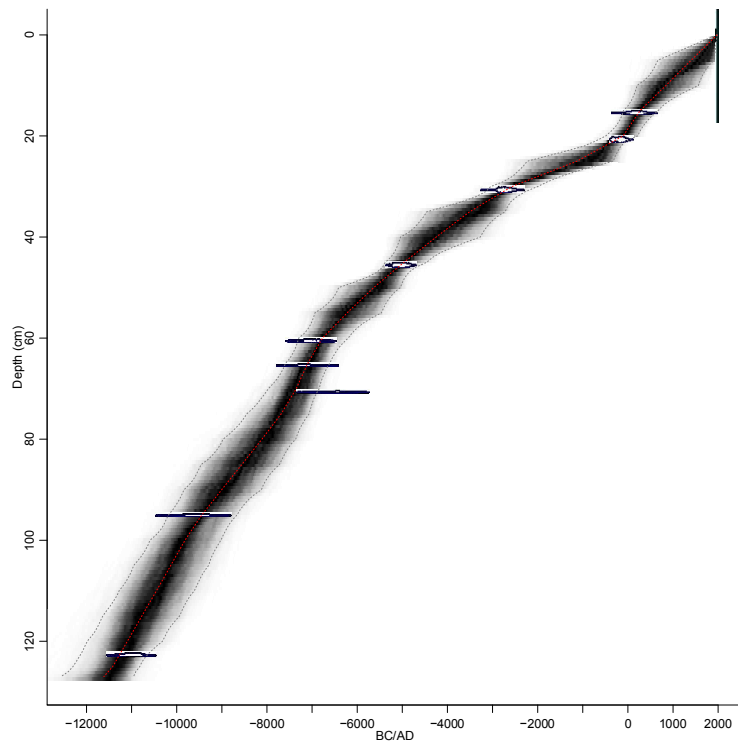
Hradec nad Svitavou



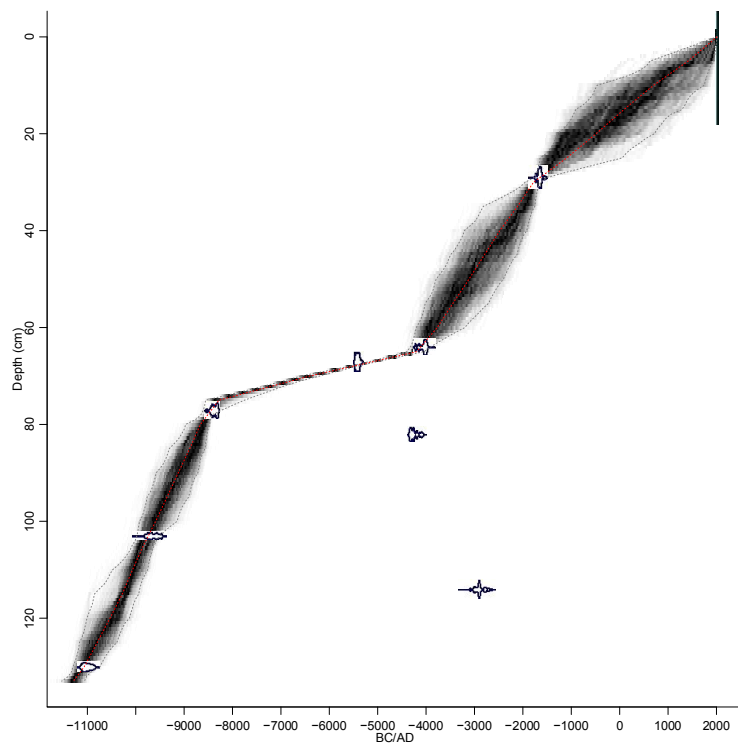
Jedlová



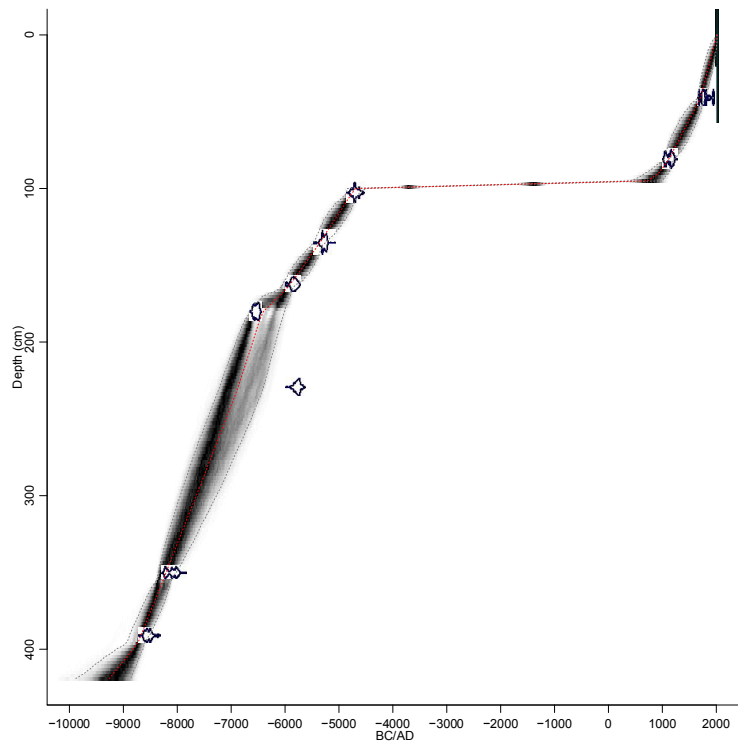
Kameničky



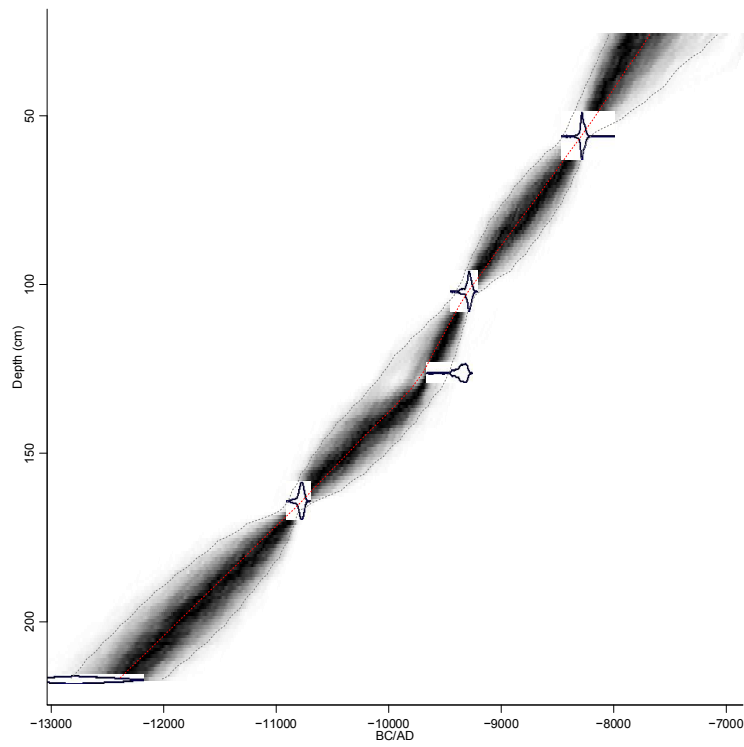
Lubenský les



Řásná



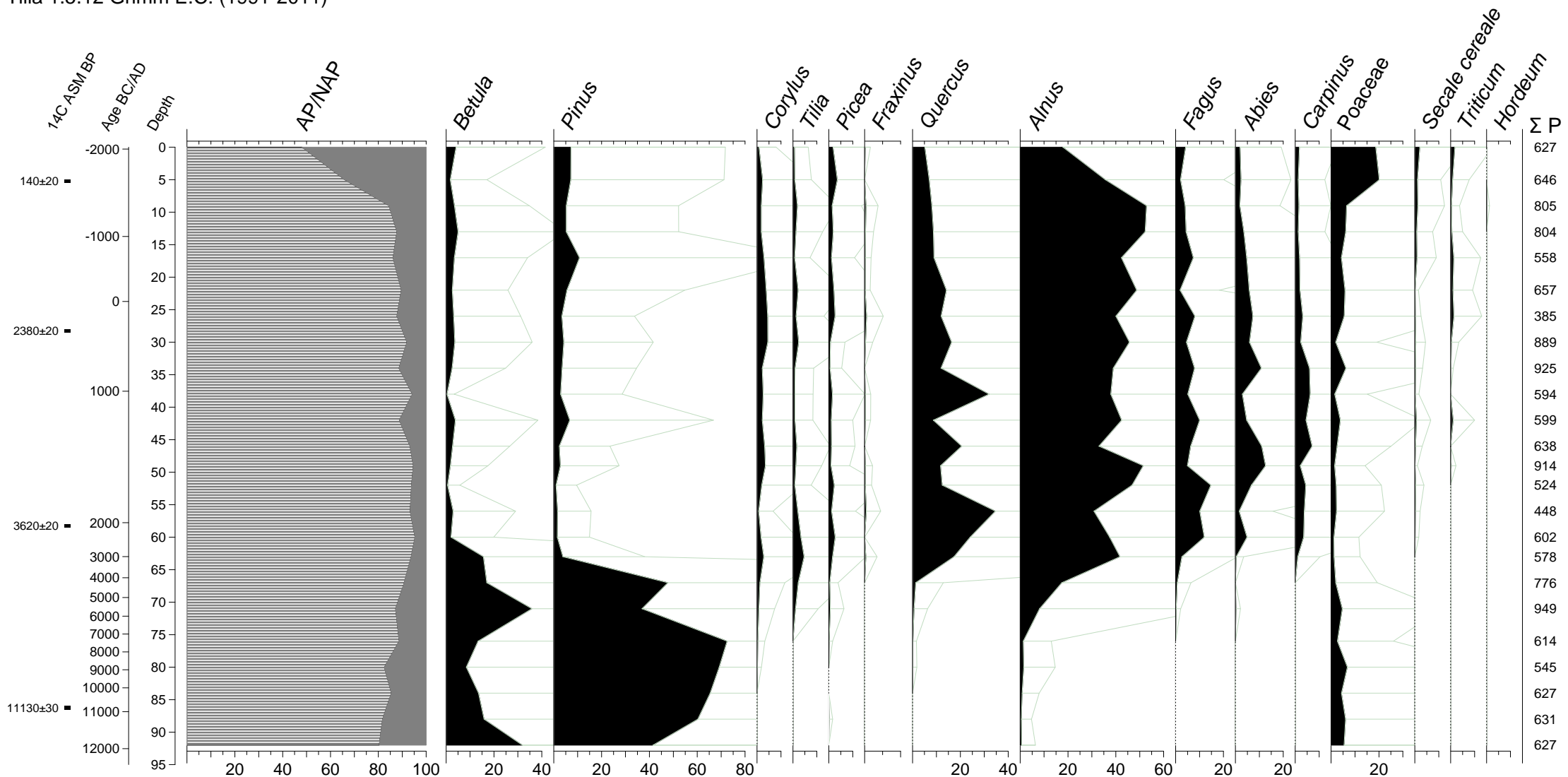
Šestidomí



HRADEC NAD SVITAVOU

Pollen percentages

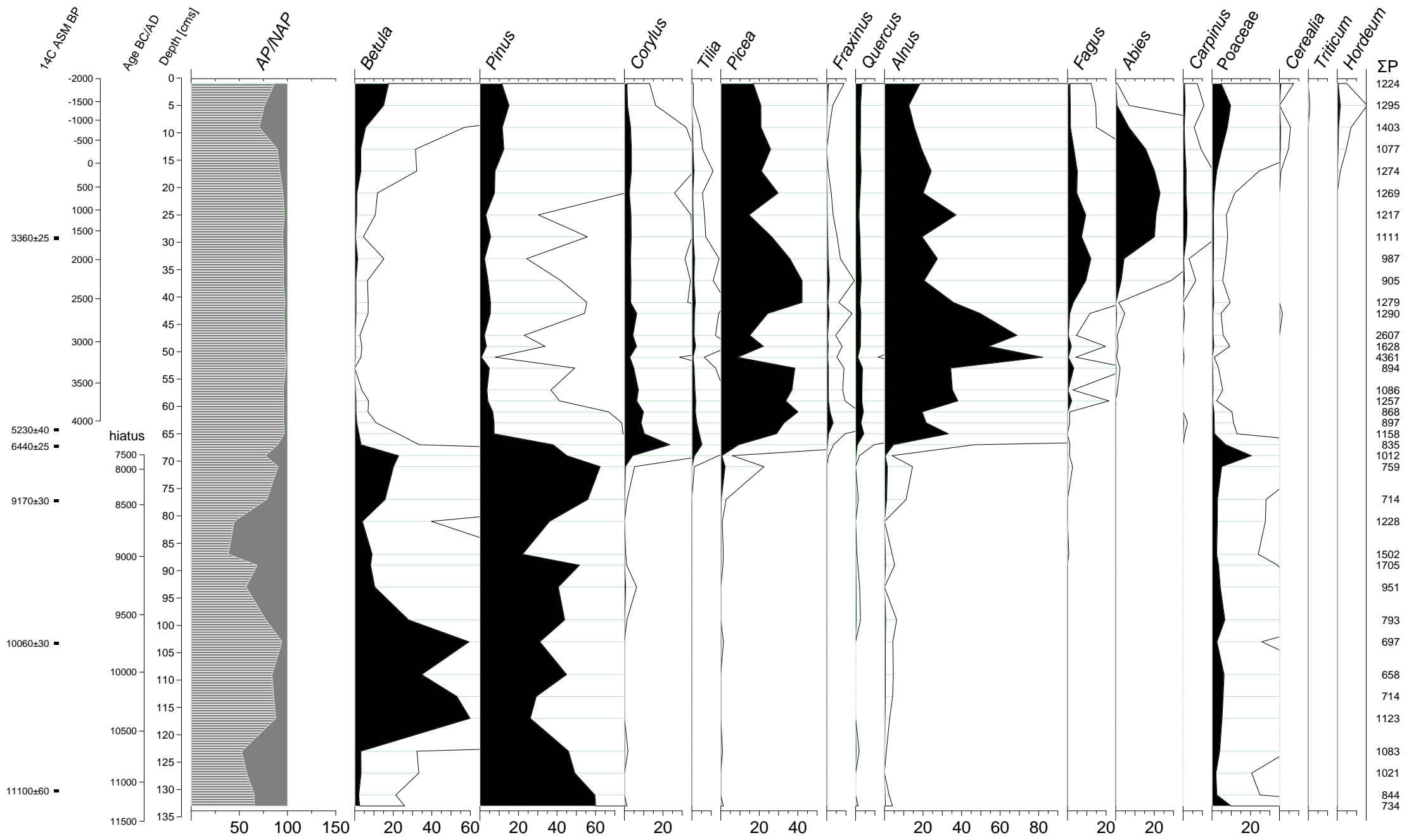
Tilia 1.5.12 Grimm E.C. (1991-2011)



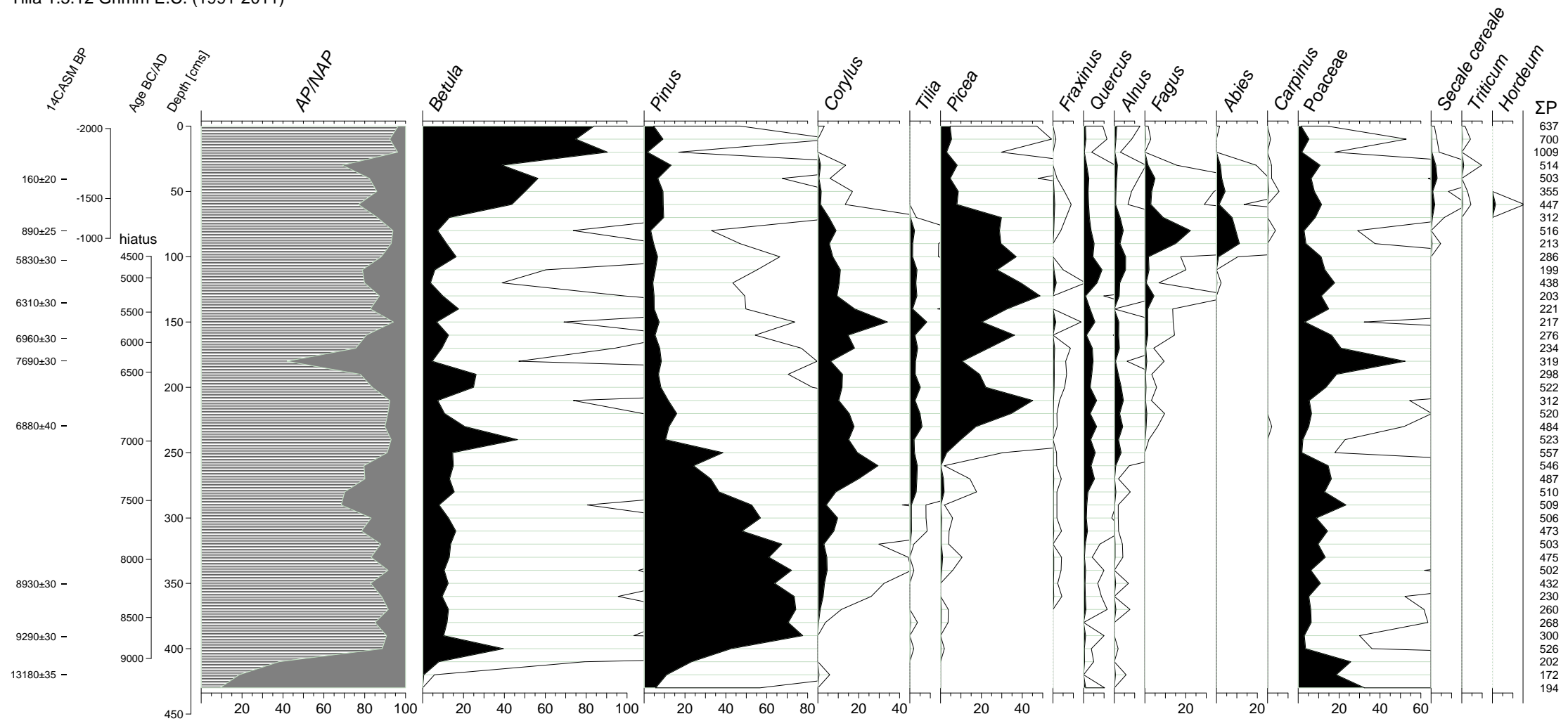
LUBENSKÝ LES

Pollen percentages

Tilia 1.5.12 Grimm E.C. (1991-2011)

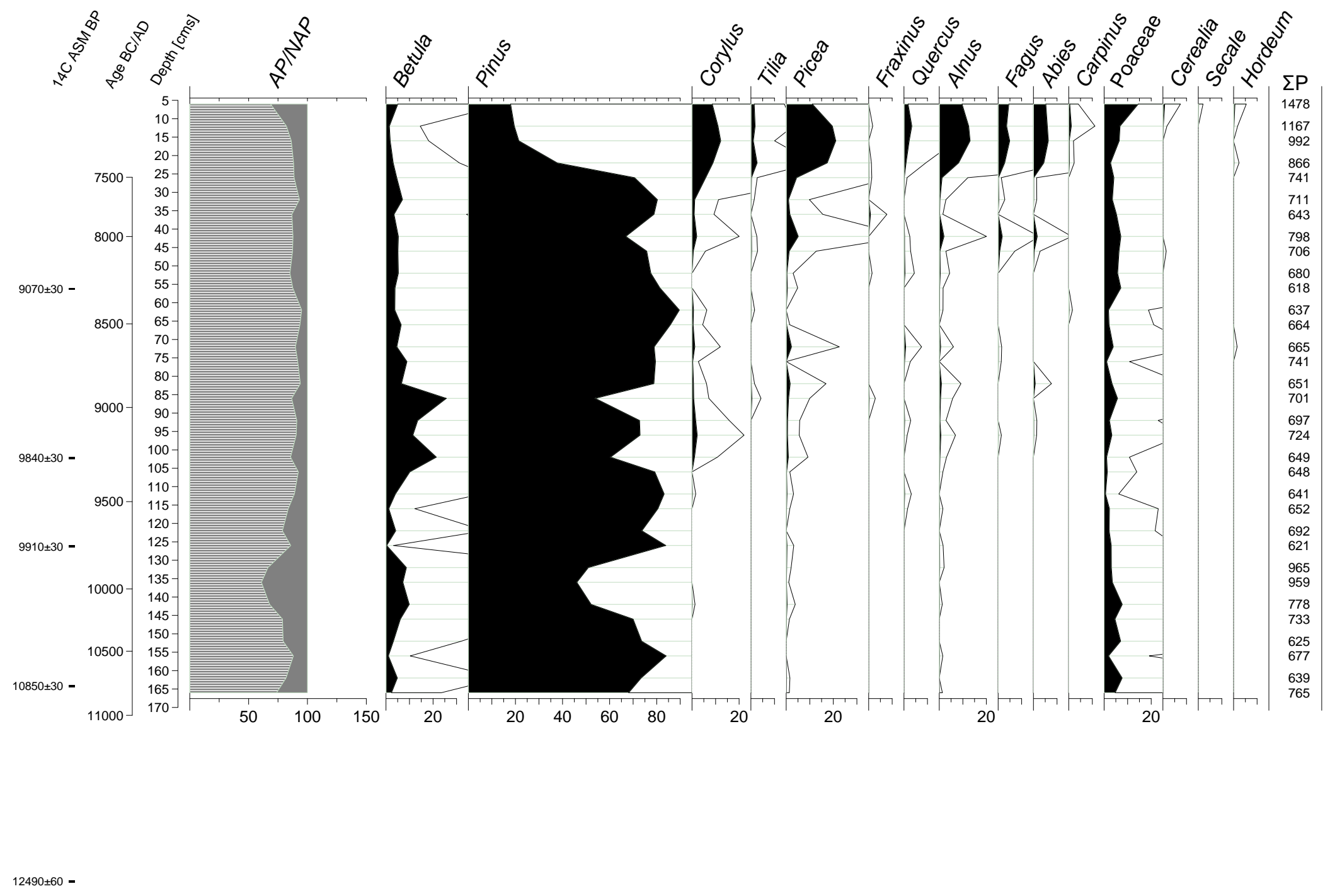


ŘÁSNÁ
 Pollen percentages
 Tilia 1.5.12 Grimm E.C. (1991-2011)



ŠESTIDOMÍ

Pollen percentages
Tilia 1.5.12 Grimm E.C. (1991-2011)



12490±60 -