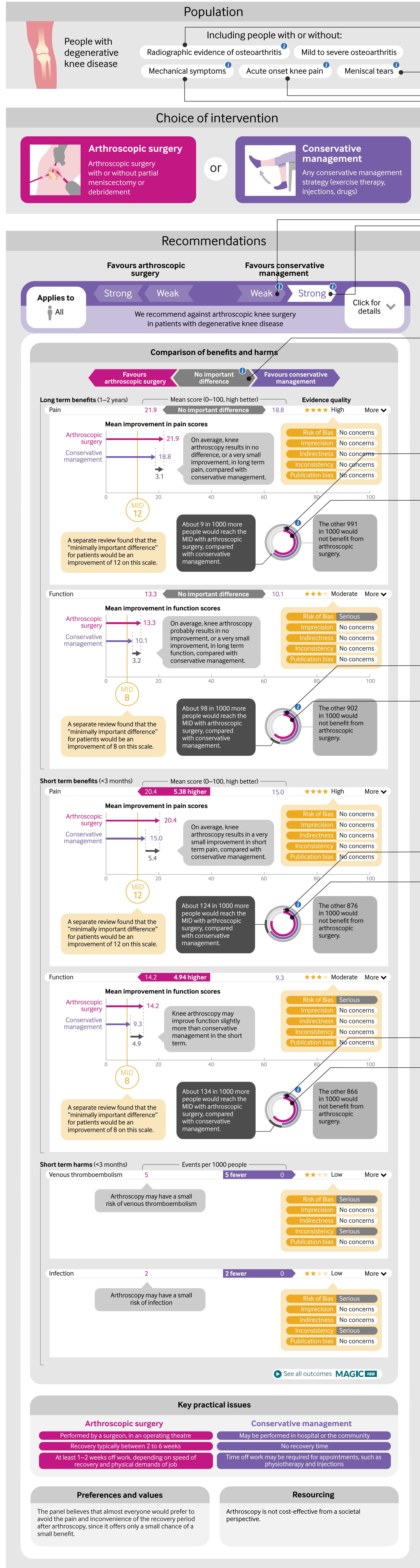


Contextual information, provided when viewer interacts with these elements (by hovering the mouse or touching the screen)

Static screenshot of the fully-expanded graphic



X-ray or MRI changes of arthritis

Tear in knee cartilage

Pain started suddenly or slowly

Locking, clicking, catching

Benefits outweigh harms for the majority, but not for everyone. The majority of patients would likely want this option

Benefits outweigh harms for almost everyone. All or nearly all informed patients would likely want this option

The panel found that this difference was not important for most patients because the intervention effects were negligible and/or very imprecise (such as statistically not significant)

With conservative management, 622 of 1000 people had improved symptoms which reached the MID (minimally important difference)

With arthroscopic surgery, 631 of 1000 people had improved symptoms which reached the MID (minimally important difference)

With conservative management, 538 of 1000 people had improved symptoms which reached the MID (minimally important difference)

With arthroscopic surgery, 636 of 1000 people had improved symptoms which reached the MID (minimally important difference)

With conservative management, 669 of 1000 people had improved symptoms which reached the MID (minimally important difference)

With arthroscopic surgery, 793 of 1000 people had improved symptoms which reached the MID (minimally important difference)

With conservative management, 519 of 1000 people had improved symptoms which reached the MID (minimally important difference)

With arthroscopic surgery, 653 of 1000 people had improved symptoms which reached the MID (minimally important difference)

This section is hidden until the "more" button is clicked

This section is hidden until the "more" button is clicked

This section is hidden initially

This section is hidden until the "more" button is clicked

This section is hidden until the "more" button is clicked

This section is hidden until the "more" button is clicked

This section is hidden until the "more" button is clicked

© 2017 BMJ Publishing group Ltd.

Disclaimer: This infographic is not a clinical decision aid. This information is provided without any representations, conditions or warranties that it is accurate or up-to-date. BMJ and its licensors assume no responsibility for any aspect of treatment administered with the aid of this information. Any reliance placed on this information is strictly at the user's own risk. For the full disclaimer, visit <http://www.bmj.com/permissions>

Find recommendations, evidence summaries and consultation decision aids for use in practice **MAGIC app**

thebmj See an interactive version of this graphic online <http://bmj.co/rrArth>