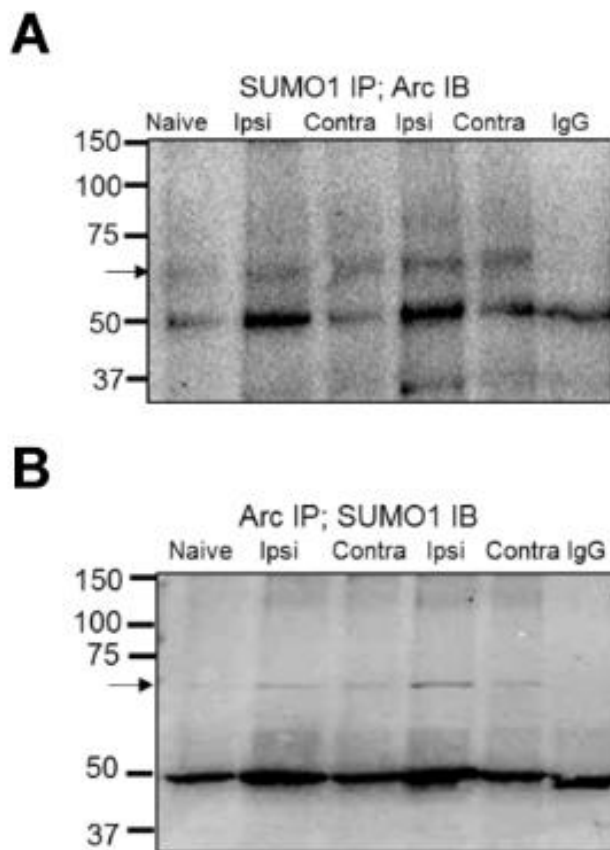


## Supplementary material

### SUPPLEMENTAL FIGURE 1.

(A) Sample blot of SUMO1 immunoprecipitation, Arc immunoblot. (B) Sample blot of Arc immunoprecipitation, SUMO1 immunoblot. Bidirectional coimmunoprecipitation of dentate gyrus lysate samples detects a 65 kDa Arc and SUMO1 immunoreactive band that increases in intensity in the HFS-treated dentate gyrus.



**SUPPLEMENTAL FIGURE 2.**

**A-C.** Coimmunoprecipitation of Arc binding partners. Arc was immunoprecipitated from dentate gyrus lysates obtained 1 hour post-HFS, and the resulting pellet was immunoblotted for candidate binding partners. **(A)** CaMKII $\beta$  and CaMKII $\alpha$  **(B)**, PSD-95 **(C)** dynamin 2. **(D-F)** Reverse immunoprecipitation. Non-modified 50 kDa Arc (but not 65 kDa SUMO1-ylated Arc) is detected in complex with immunoprecipitated CaMKII $\alpha$ , CaMKII $\beta$ , PSD-95, and dynamin 2. Representative blots based on at least three independent biological replicates (LTP experiments). Blots in each panel are from a single gel.

