

Spatial dynamics of TB within a highly urbanised Asian metropolis using point patterns

Sourav Das*, Alex R. Cook[†], Win Wah[†], Khin Mar Kyi Win**, Cynthia Bin Eng Chee**, Yee Tang Wang**, Hsu Li Yang^{†**†}

*School of Mathematics, University of Bristol.

[†] Saw Swee Hock School of Public Health, National University of Singapore and National University Health System.

** Tuberculosis Control Unit, Singapore TB Elimination Program, Ministry of Health, Singapore.

[†]corresponding author: hsuliyang@gmail.com

Supplementary Information

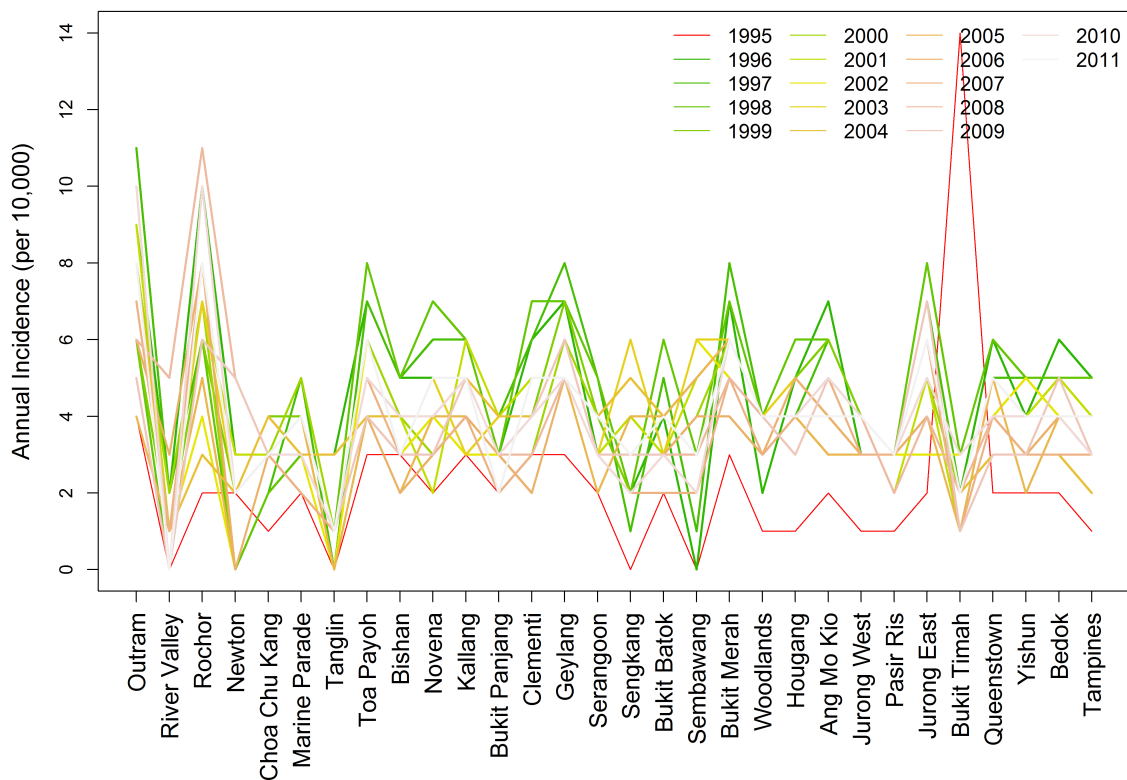


Figure S.1: Figure shows Annual incidence (per 10,000) of resident TB across thirty planning areas of Singapore between 1995 and 2011. Planning areas (x-axis) are presented in increasing order of land area.