

Cyclooxygenase-2 Signalling Pathway in the Cortex is involved in the Pathophysiological Mechanisms in the Rat Model of Depression

Qi Chen¹, Ying Luo¹, Shengnan Kuang¹, Yang Yang¹, Xiaoyan Tian¹, Jie Ma¹, Shaoshan Mai¹, Lai Xue¹, Junqing Yang^{1*}

¹ Department of Pharmacology, Chongqing Medical University, the Key Laboratory of Biochemistry and Molecular Pharmacology, Chongqing 400016, China

*Corresponding author:

Prof. Junqing Yang,

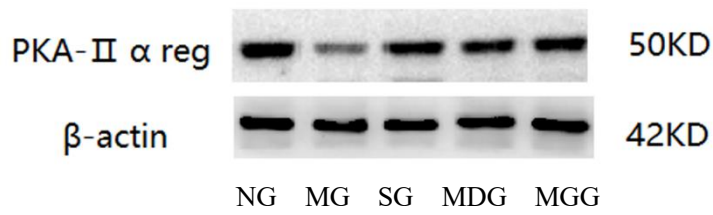
Department of Pharmacology, Chongqing Medical University, Chongqing 400016, China;

Tel: +86-23-68485161; Fax: +86-23-68485161;

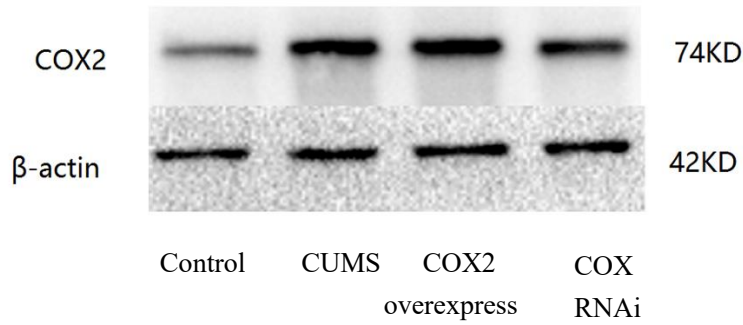
E-mail: 1139627371@qq.com

Qi Chen and Ying Luo are co-first authors.

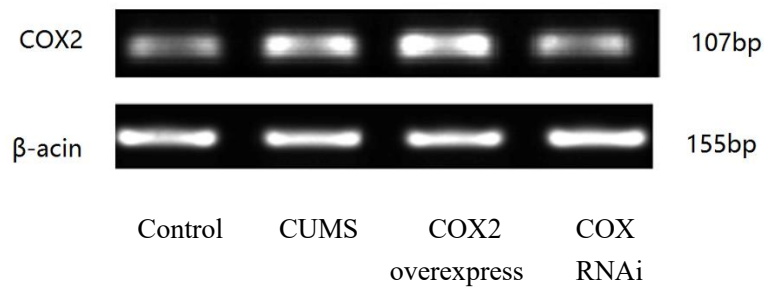
Supplementary Figure 3 The Original Western- blotting figure of PKAII α reg protein for Figure 3



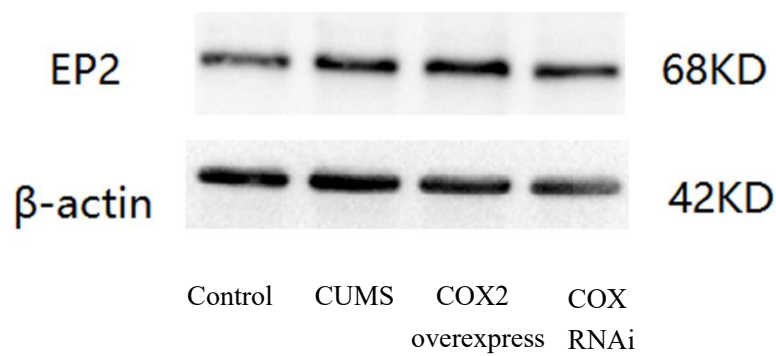
Supplementary Figure 7 The Original Western- blotting figure of COX2 protein for Figure 7



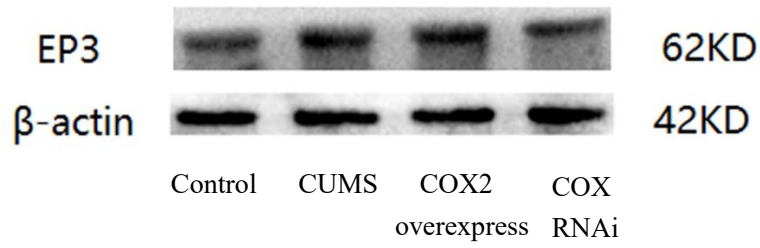
Supplementary Figure 7 The Original RT-PCR figure of COX2 mRNA for Figure 7



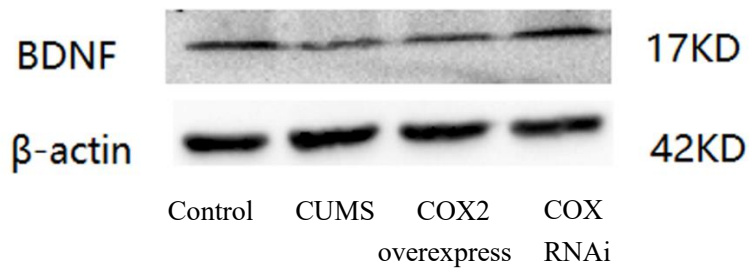
Supplementary Figure 8 The Original Western- blotting figure of EP2 protein for Figure 8



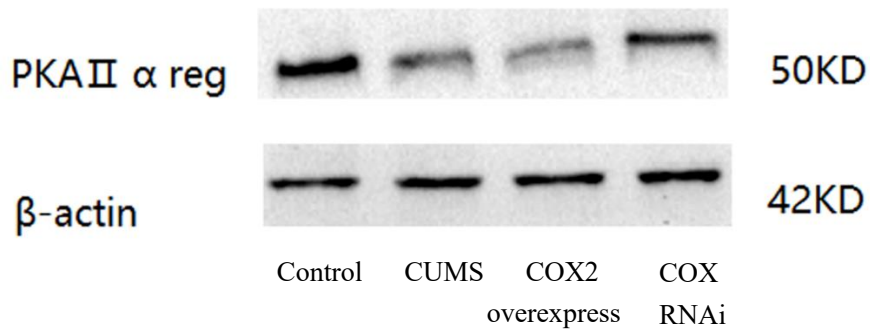
Supplementary Figure 8 The Original Western- blotting figure of EP3 protein for Figure 8



Supplementary Figure 8 The Original Western- blotting figure of BDNF protein for Figure 8



Supplementary Figure 8 The Original Western- blotting figure of PKA-II α reg protein for Figure 8



Supplementary Figure 8 The Original Western- blotting figure of p-CREB protein for Figure 8

