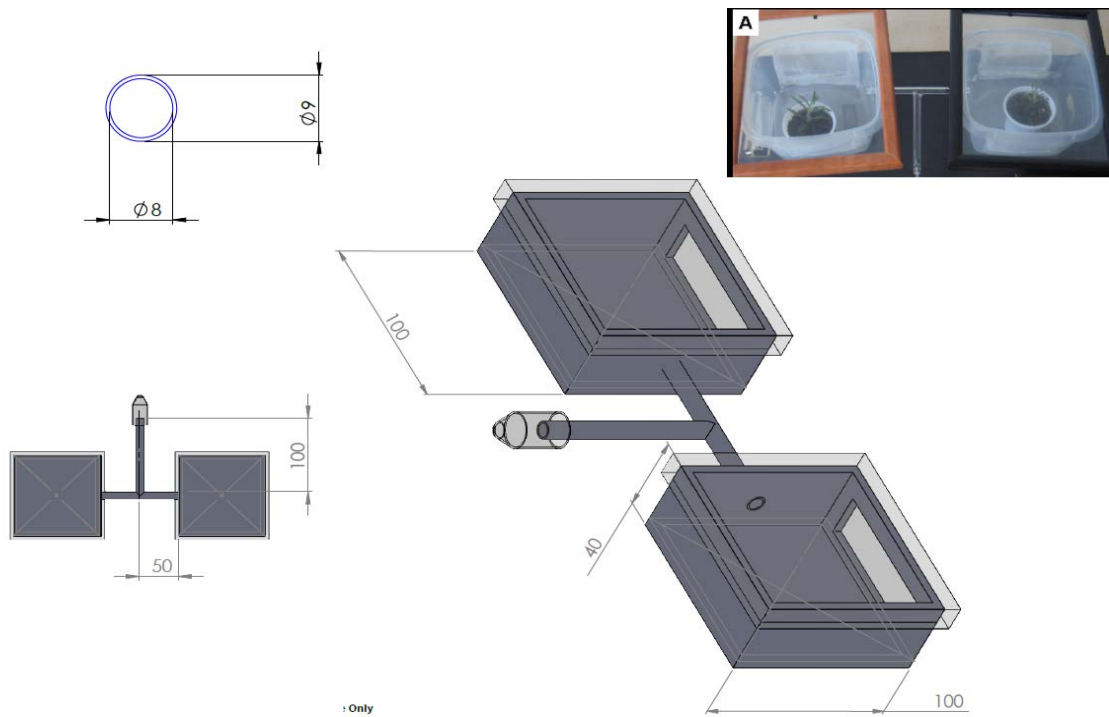
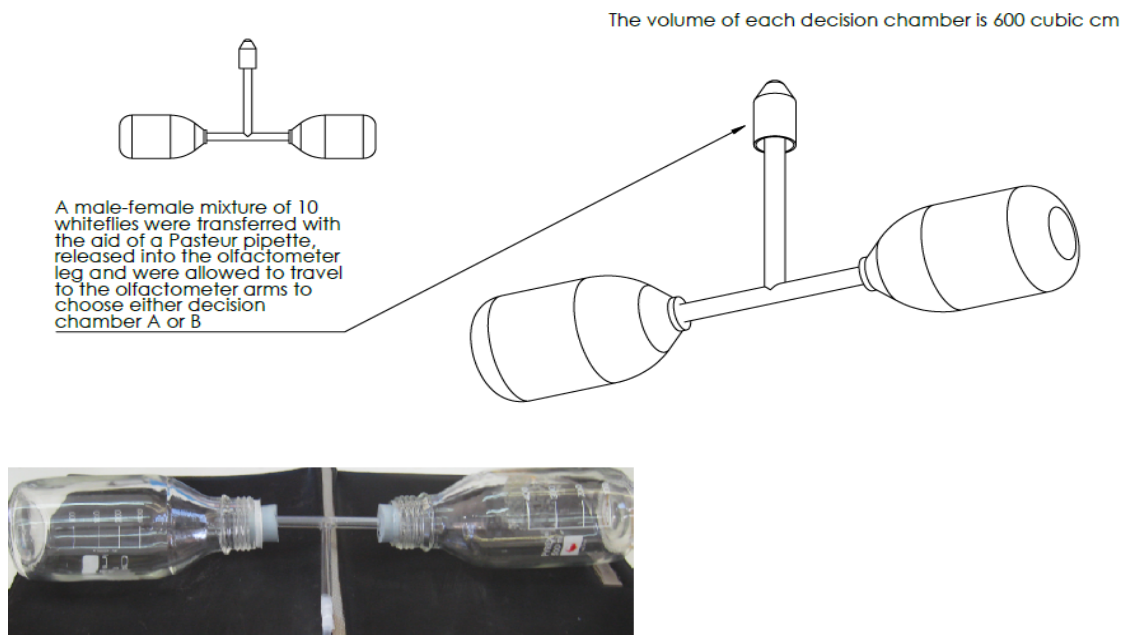


**a**



**b**



**Fig S1.** The experimental setup used for choice and no-choice tests. Two cube-shaped plastic chambers containing rosemary young plants for comparing the preference of adult whiteflies were connected with a T-shaped glass tunnel on a dark background (a). No-choice laboratory experiments for a specific volatiles were conducted using the T- shaped apparatus for connecting two horizontally laid bottles (0.6 L each), and placed on a black background (b). The insects were introduced into the glass tunnel and allowed to choose between the bottles, led only by their sense of smell.