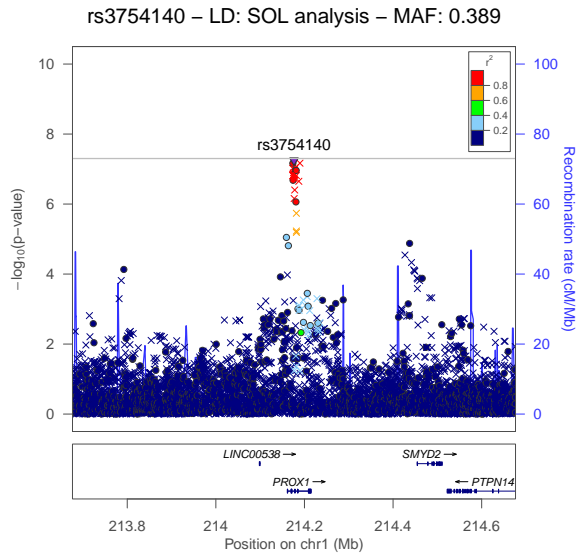
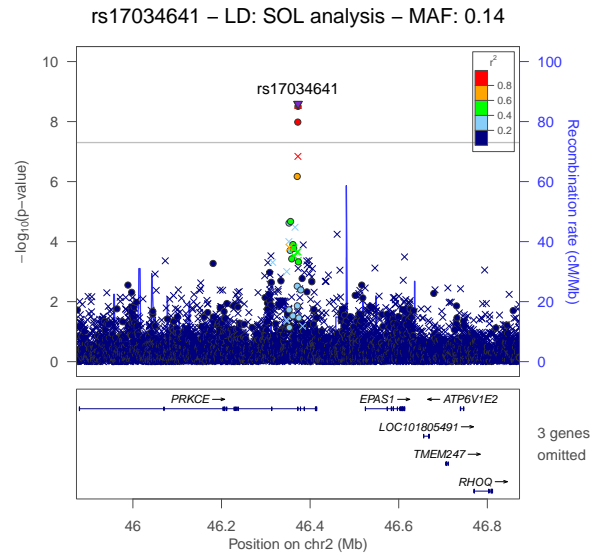


Fig S2 Locus zoom plots for loci significantly associated with red cell traits in HCHS/SOL

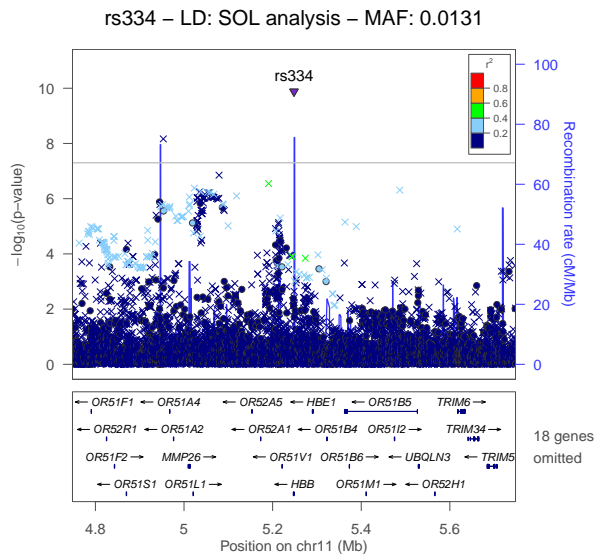
Fig S2.1 HCT



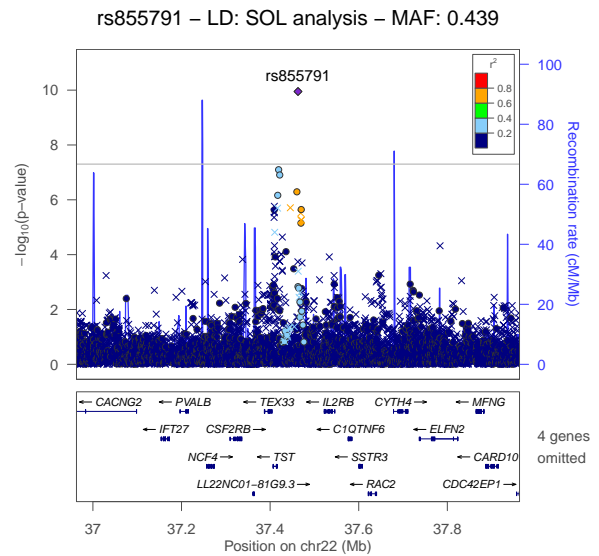
(a) Locus:PROX1, lead variant:rs3754140



(b) Locus:PRKCE, lead variant:rs17034641

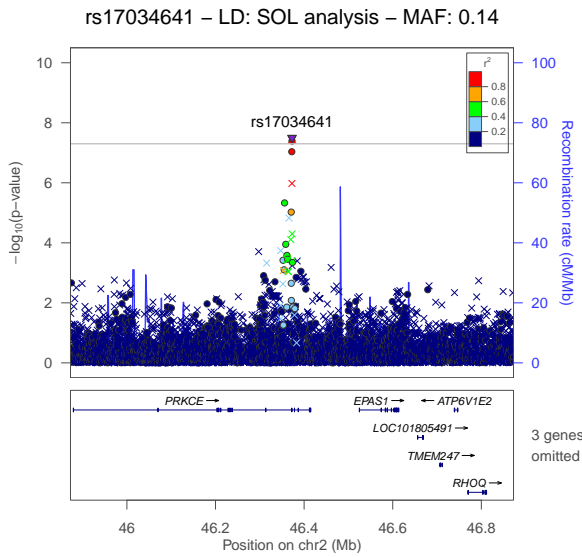


(c) Locus:HBB, lead variant:rs334

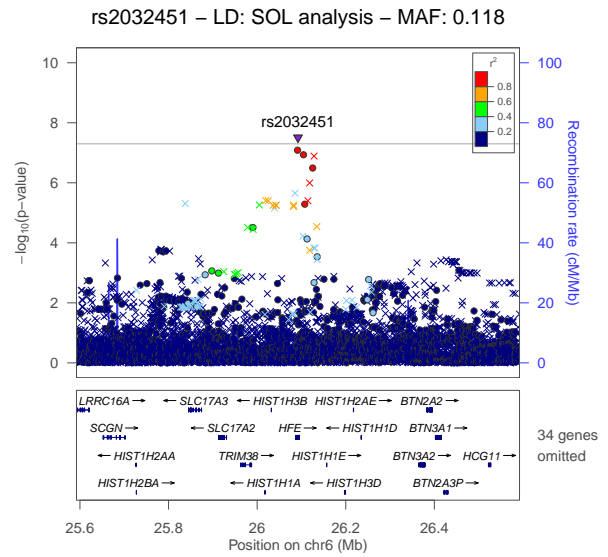


(d) Locus:TMPRSS6, lead variant:rs855791

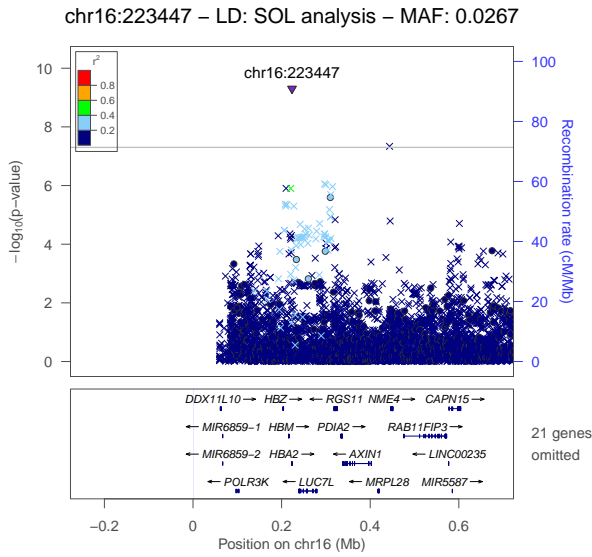
Fig S2.2 HGB



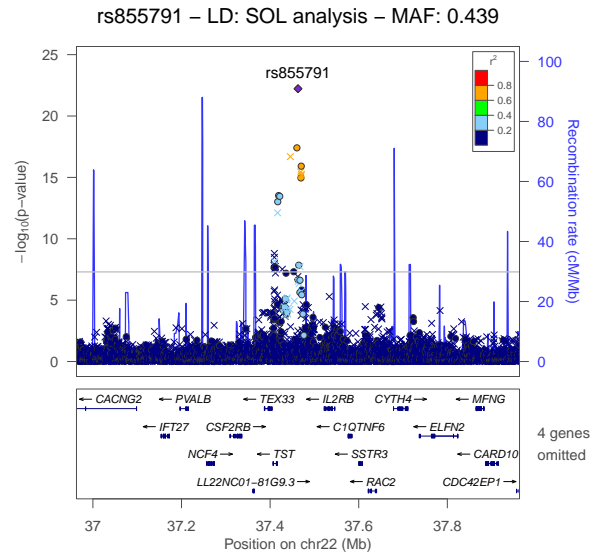
(a) Locus:PRKCE, lead variant:rs17034641



(b) Locus:HFE, lead variant:rs2032451

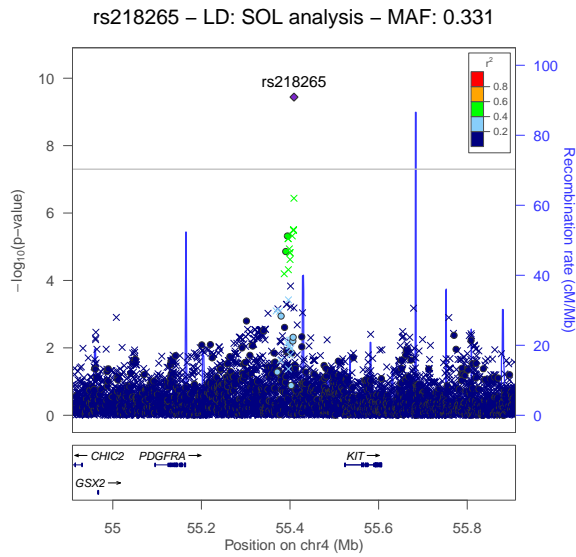


(c) Locus:HBA1/HBA2, lead variant:esv2676630

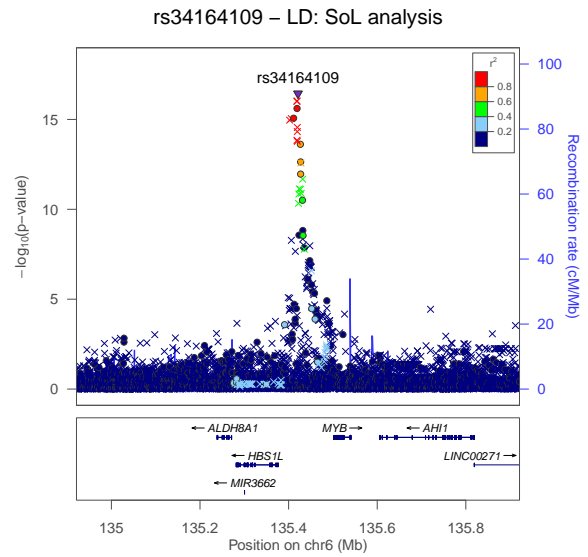


(d) Locus:TMPRSS6, lead variant:rs855791

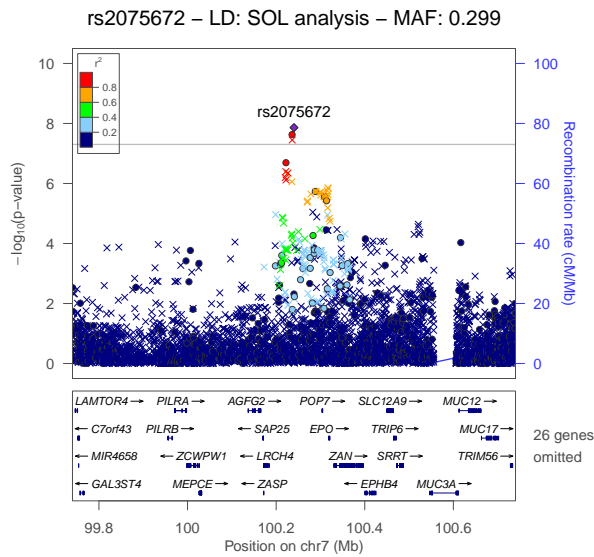
Fig S2.3 RBC count



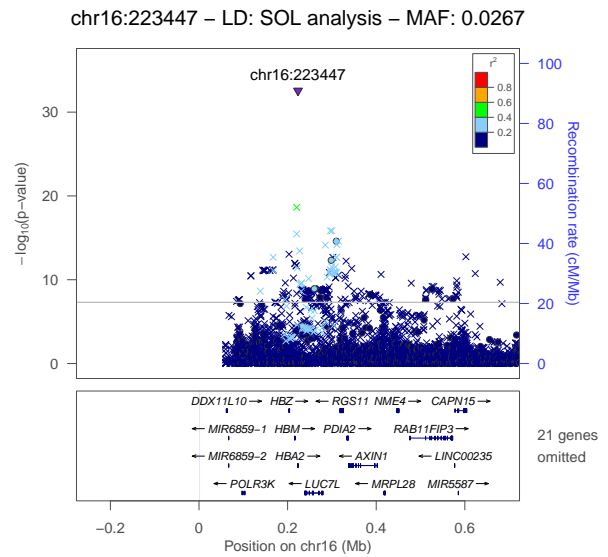
(a) Locus:KIT, lead variant:rs218265



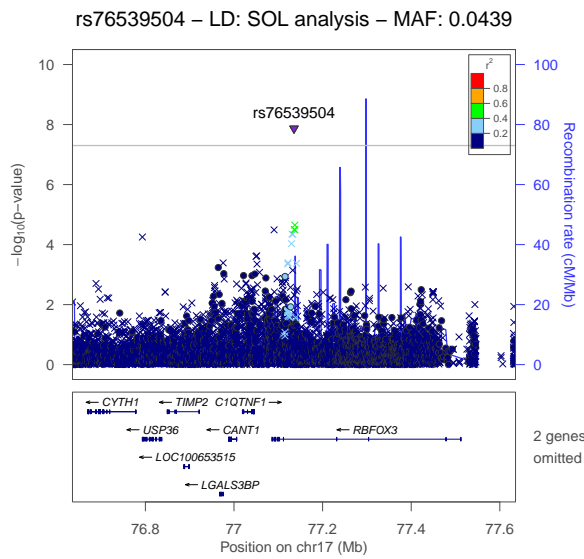
(b) Locus:HBS1L/MYB, lead variant:rs34164109



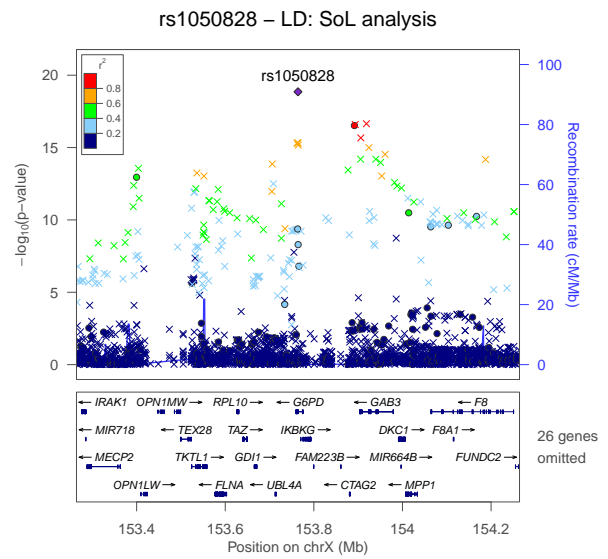
(c) Locus:TFR2, lead variant:rs2075672



(d) Locus:HBA1/HBA2, lead variant:esv2676630

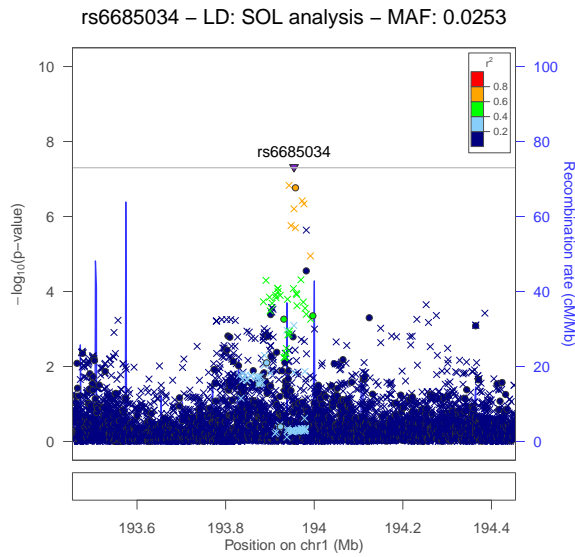


(e) Locus:RBFQX3, lead variant:rs76539504

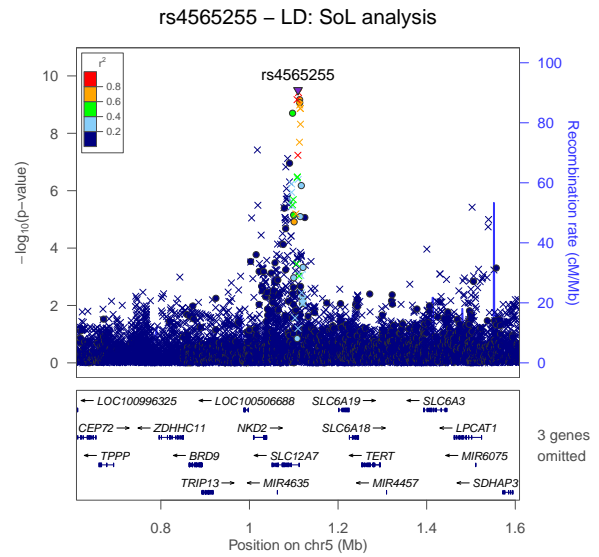


(f) Locus:G6PD, lead variant:rs1050828

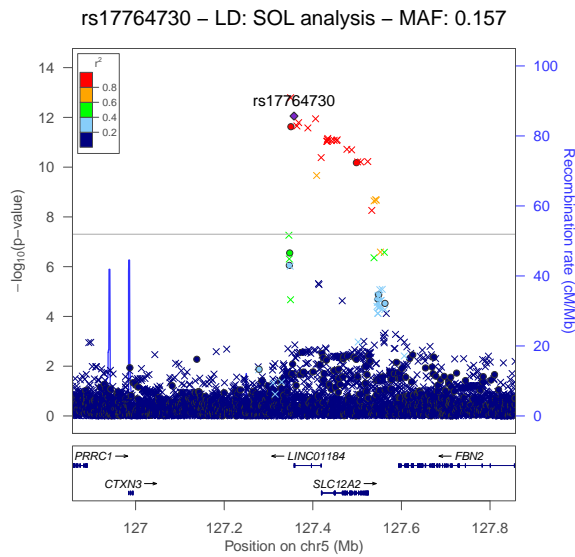
Fig S2.4 RDW



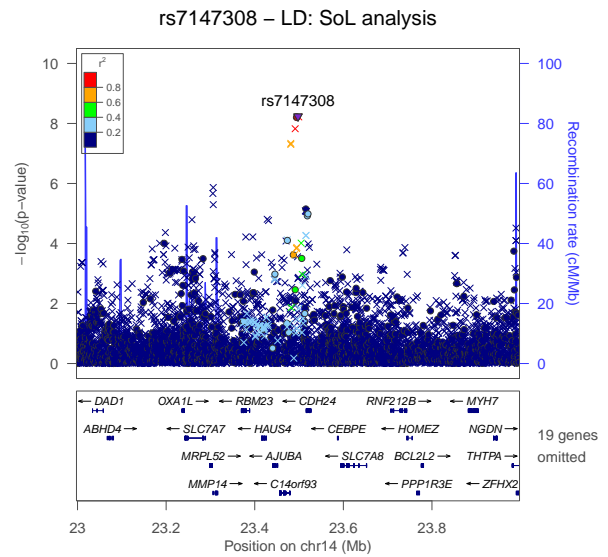
(a) Locus: Intergenic, lead variant: rs6685034



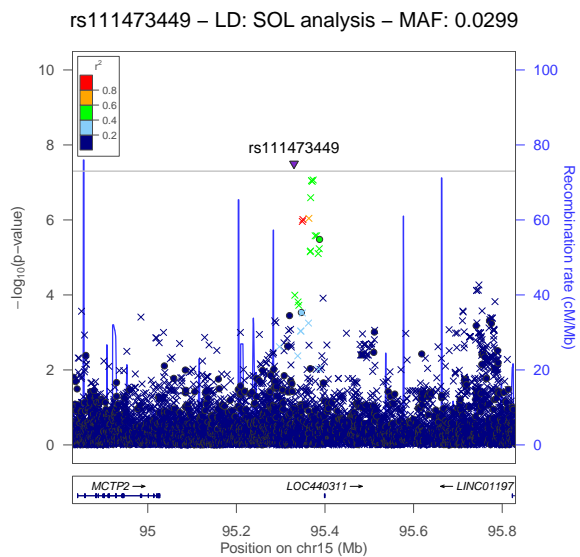
(b) Locus: SLC12A7, lead variant: rs4565255



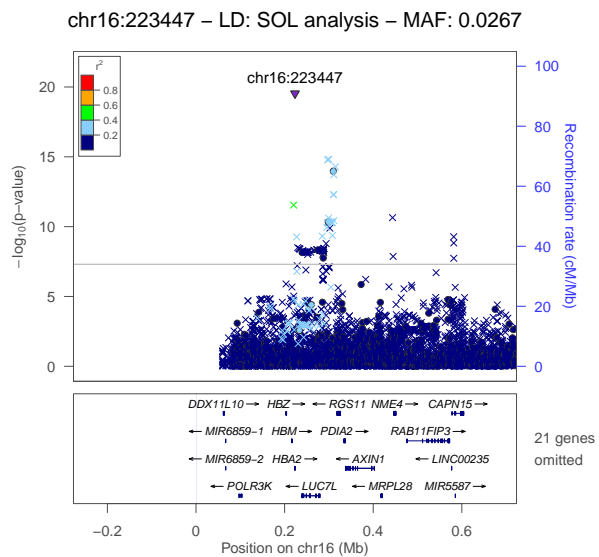
(c) Locus: SLC12A2, lead variant: rs17764730



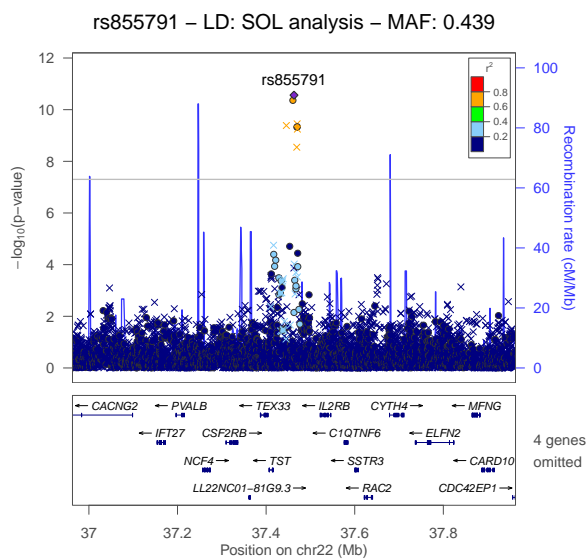
(d) Locus: PSMB5, lead variant: rs7147308



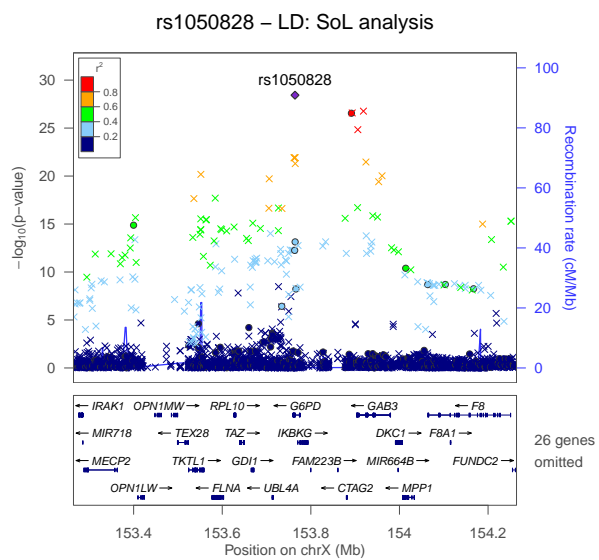
(e) Locus:MCTP2, lead variant:rs111473449



(f) Locus:HBA1/HBA2, lead variant:esv2676630

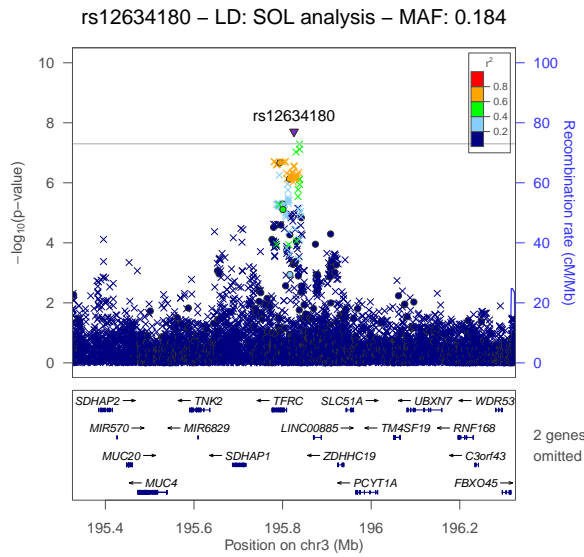


(g) Locus:TMPRSS6, lead variant:rs855791

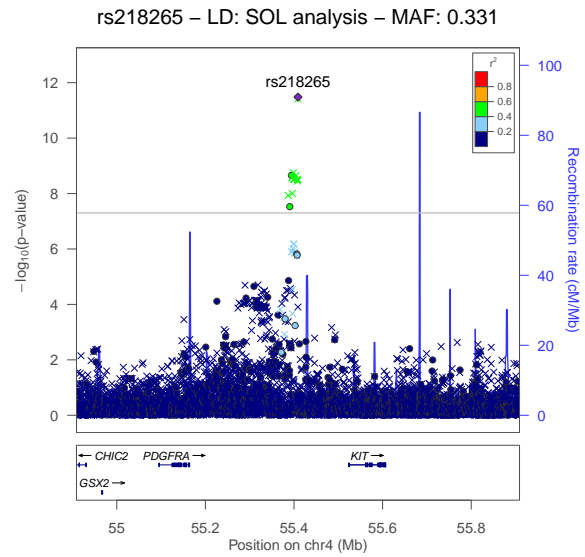


(h) Locus:G6PD, lead variant:rs1050828

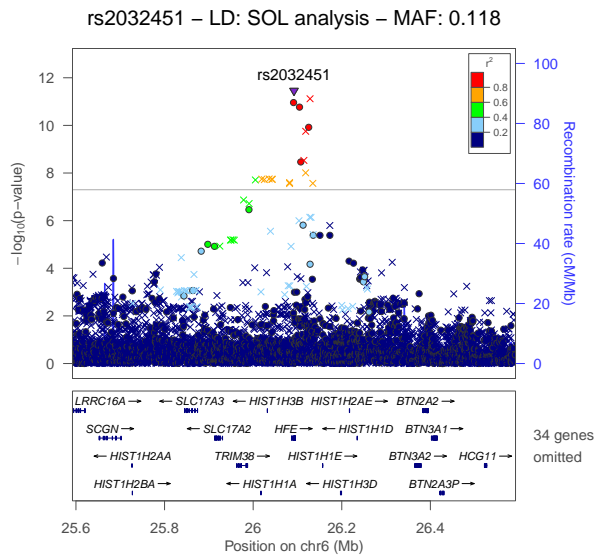
Fig S2.5 MCH



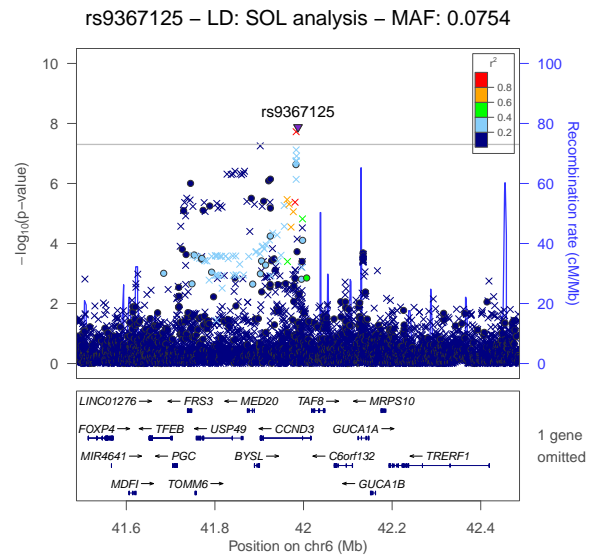
(a) Locus:TFRC, lead variant:rs12634180



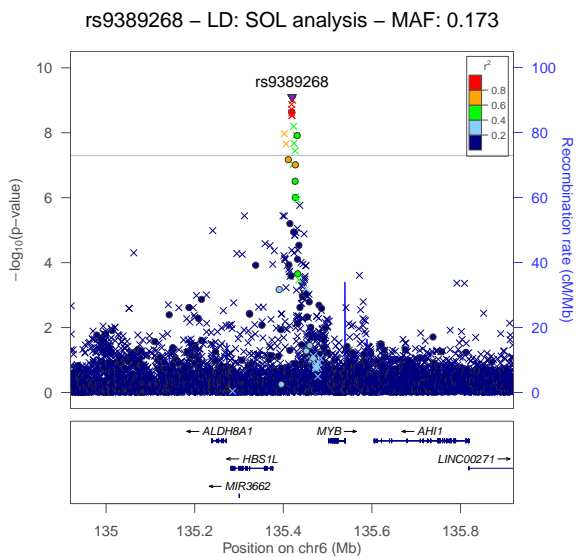
(b) Locus:KIT, lead variant:rs218265



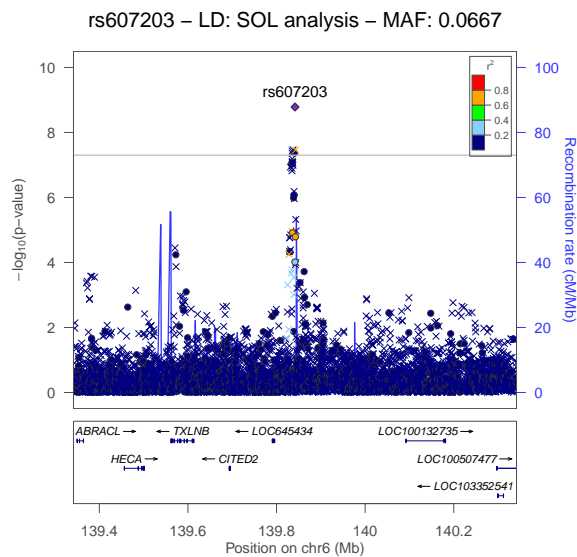
(c) Locus:HFE, lead variant:rs2032451



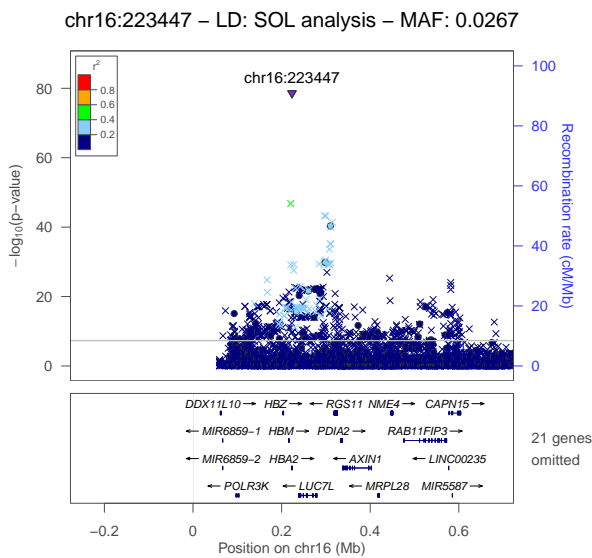
(d) Locus:CCND3, lead variant:rs9367125



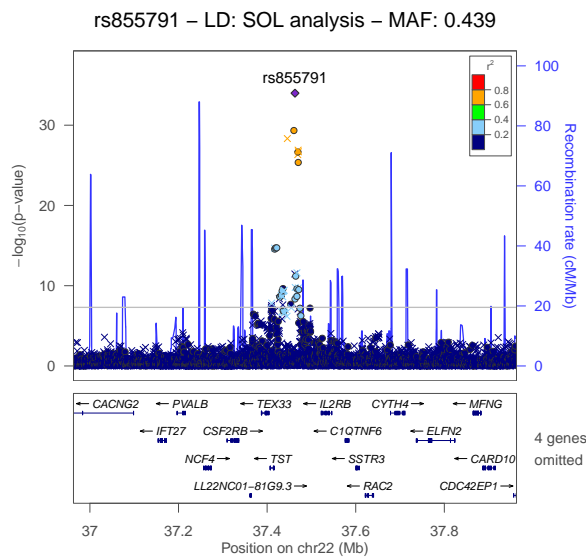
(e) Locus:HBS1L/MYB, lead variant:rs9389268



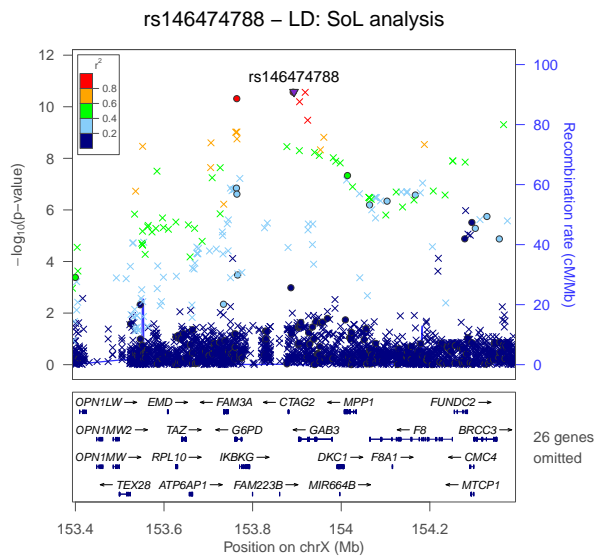
(f) Locus:CITED2, lead variant:rs607203



(g) Locus:HBA1/HBA2, lead variant:esv2676630

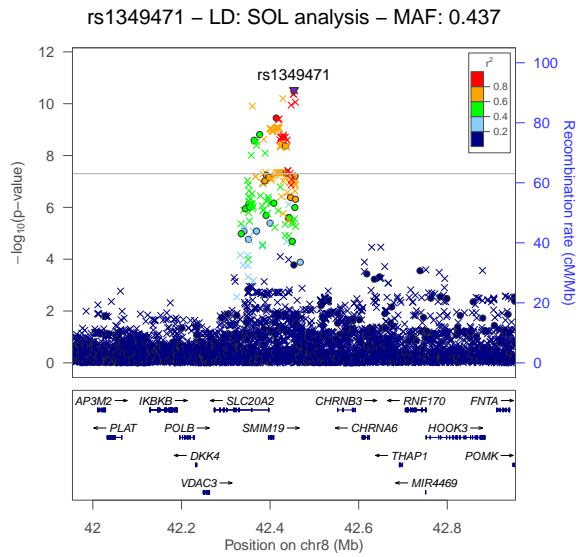


(h) Locus:TMPRSS6, lead variant:rs855791

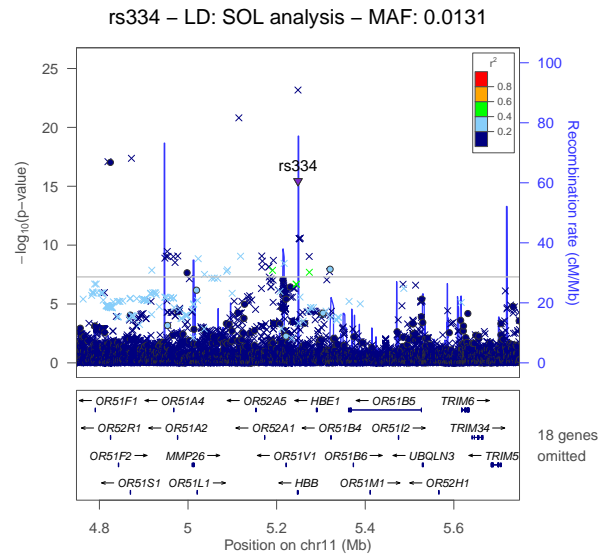


(i) Locus:CTAG2/GAB3, lead variant:rs146474788

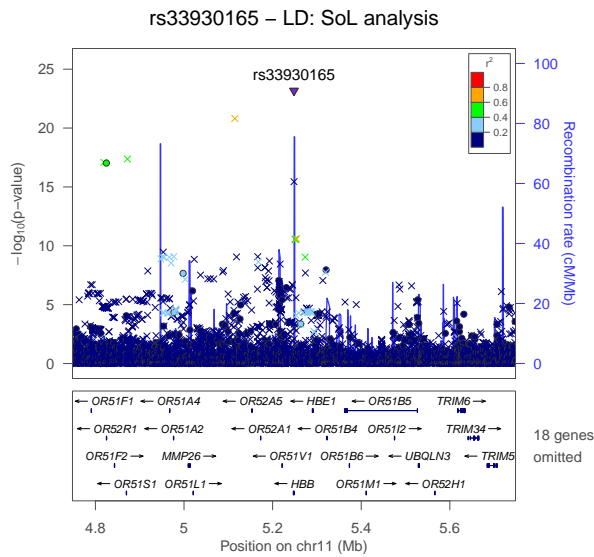
Fig S2.6 MCHC



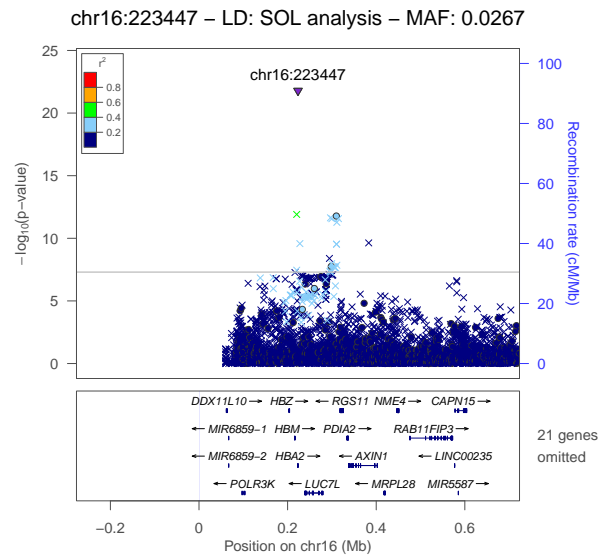
(a) Locus:SMIM19, lead variant:rs1349471



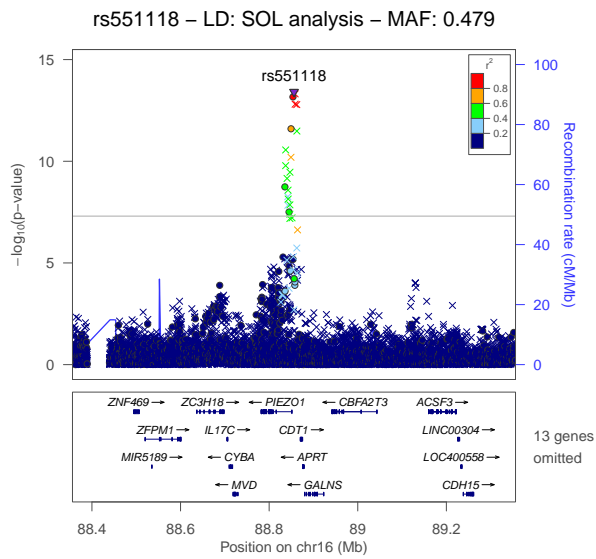
(b) Locus:HBB, lead variant:rs334



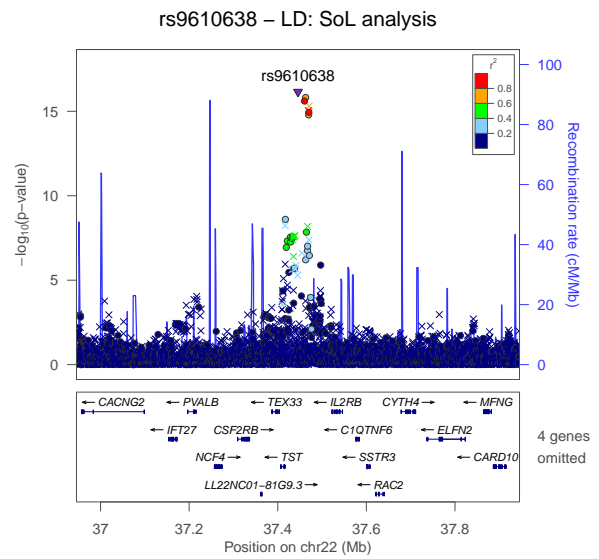
(c) Locus:HBB, lead variant:rs33930165



(d) Locus:HBA1/HBA2, lead variant:esv2676630

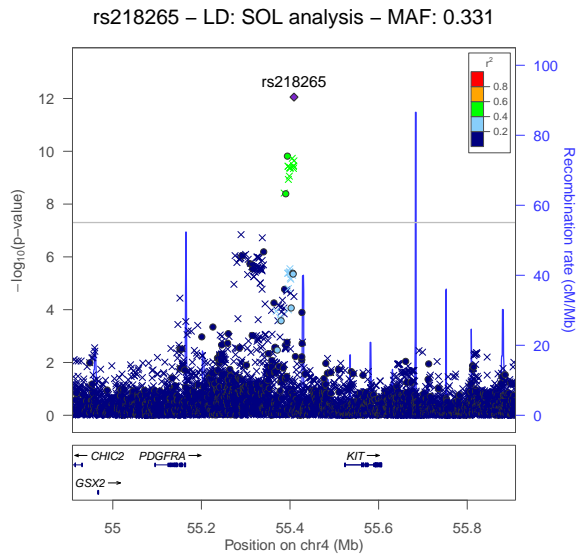


(e) Locus:PIEZO1, lead variant:rs551118

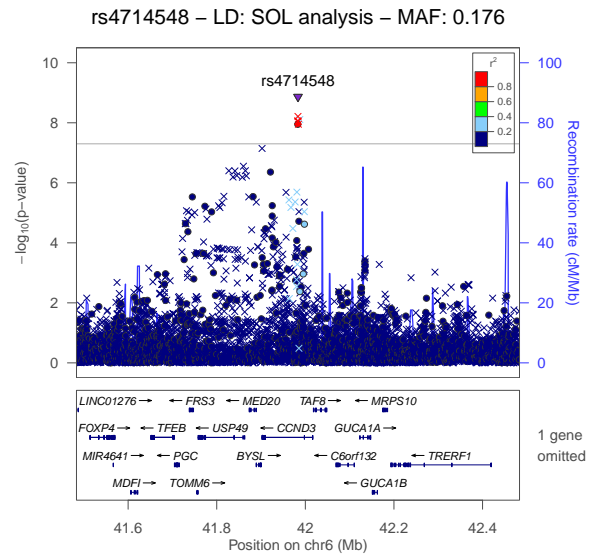


(f) Locus:KCTD17, lead variant:rs9610638

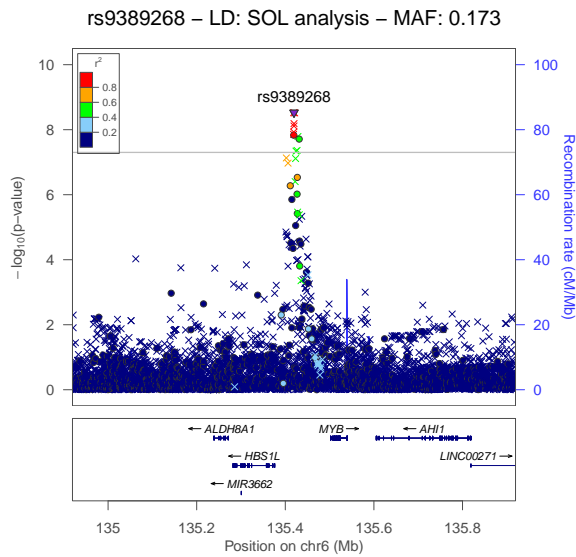
Fig S2.7 MCV



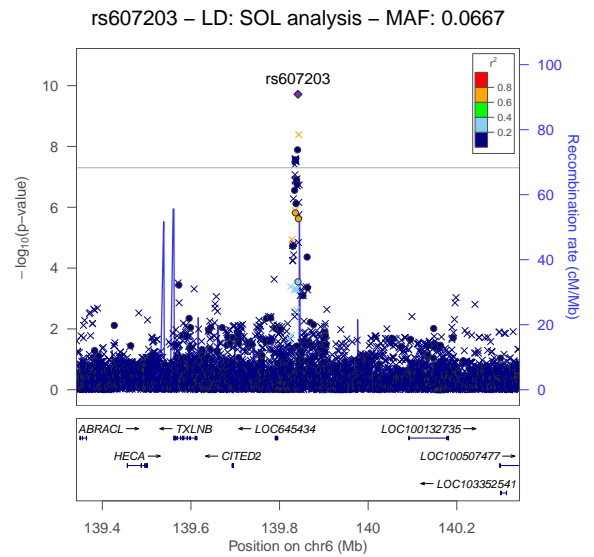
(a) Locus:KIT, lead variant:rs218265



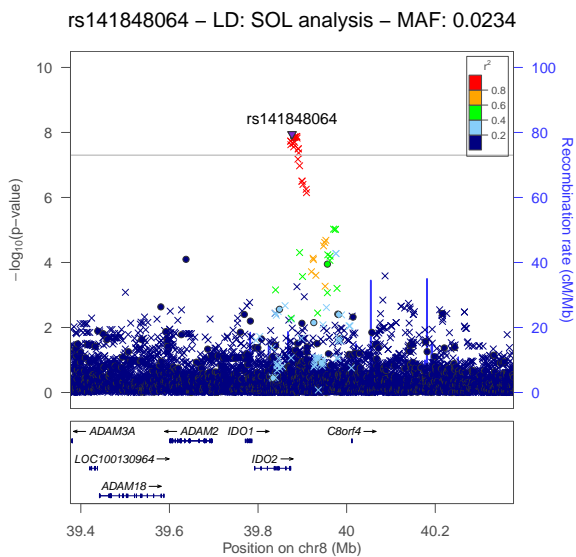
(b) Locus:CCND3, lead variant:rs4714548



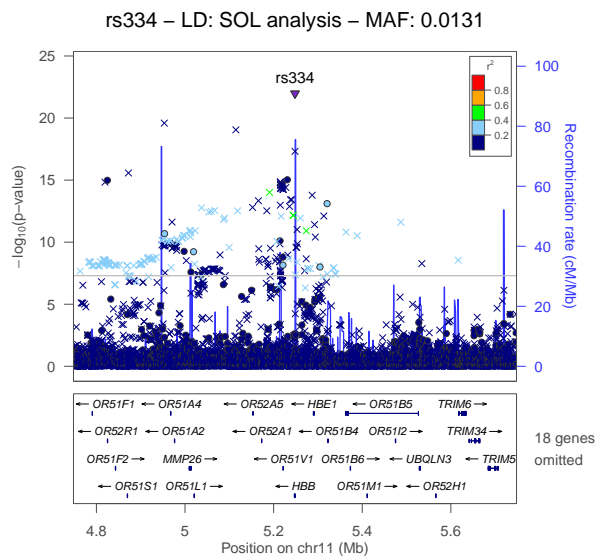
(c) Locus:HBS1L/MYB, lead variant:rs9389268



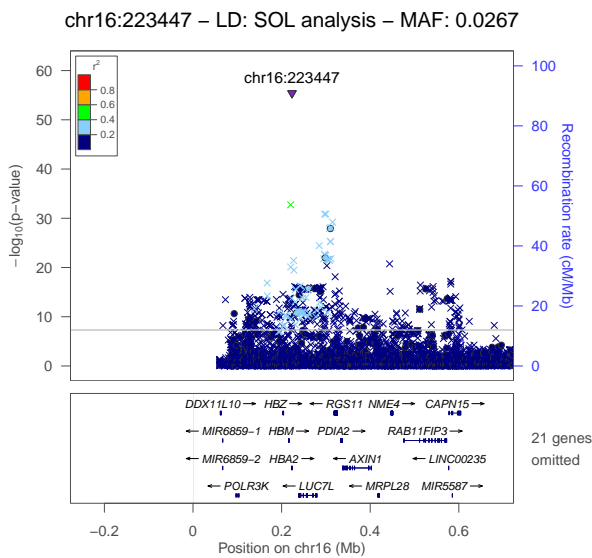
(d) Locus:CITED2, lead variant:rs607203



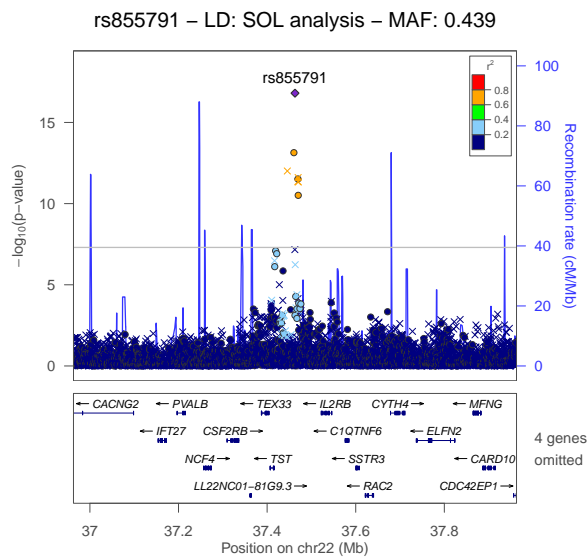
(e) Locus:IDO2, lead variant:rs141848064



(f) Locus:HBB, lead variant:rs334

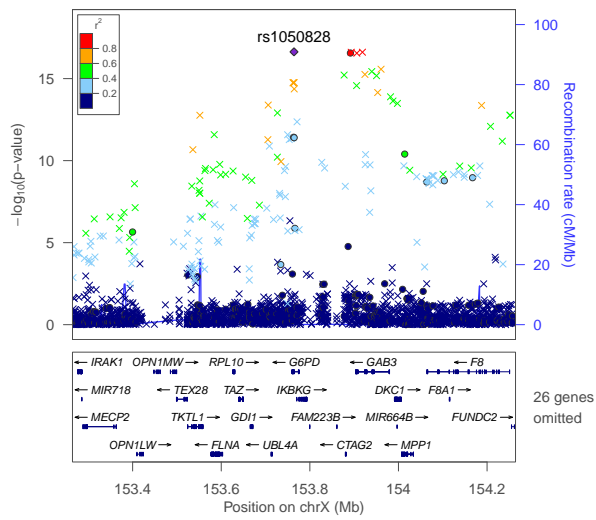


(g) Locus:HBA1/HBA2, lead variant:esv2676630



(h) Locus:TMPRSS6, lead variant:rs855791

rs1050828 – LD: SoL analysis



(i) Locus:G6PD, lead variant:rs1050828