

Supplementary information

Structure-based dynamic arrays in regulatory domains of sodium-calcium exchanger (NCX) isoforms

Moshe Giladi^{1,#}, Su Youn Lee^{2,#}, Yarden Ariely¹, Yotam Teldan¹, Rotem Granit¹,
Roi Strulovich¹, Yoni Haitin¹, Ka Young Chung^{2,*}, and Daniel Khananshvili^{1,*}

¹Department of Physiology and Pharmacology, Tel-Aviv University, Tel-Aviv 69978,
Israel

²School of Pharmacy, Sungkyunkwan University, Jangan-gu, Suwon, 440-746,
South Korea

[#]These authors contributed equally to this work

*Corresponding authors:

Professor Ka Young Chung
School of Pharmacy, Sungkyunkwan University,
Jangan-gu, Suwon, 16419, South Korea,
E-mail kychung2@skku.edu

Professor Daniel Khananshvili
Department of Physiology and Pharmacology
Sackler School of Medicine, Tel-Aviv University
Ramat-Aviv, Tel-Aviv 69978, Israel
Tel: 972-3-640-9961; Fax: 972-3-640-9113
E-mail: dhanan@post.tau.ac.il

Running title: Isoform-specific regulatory modes in NCX2 and NCX3

Supplementary figure legends

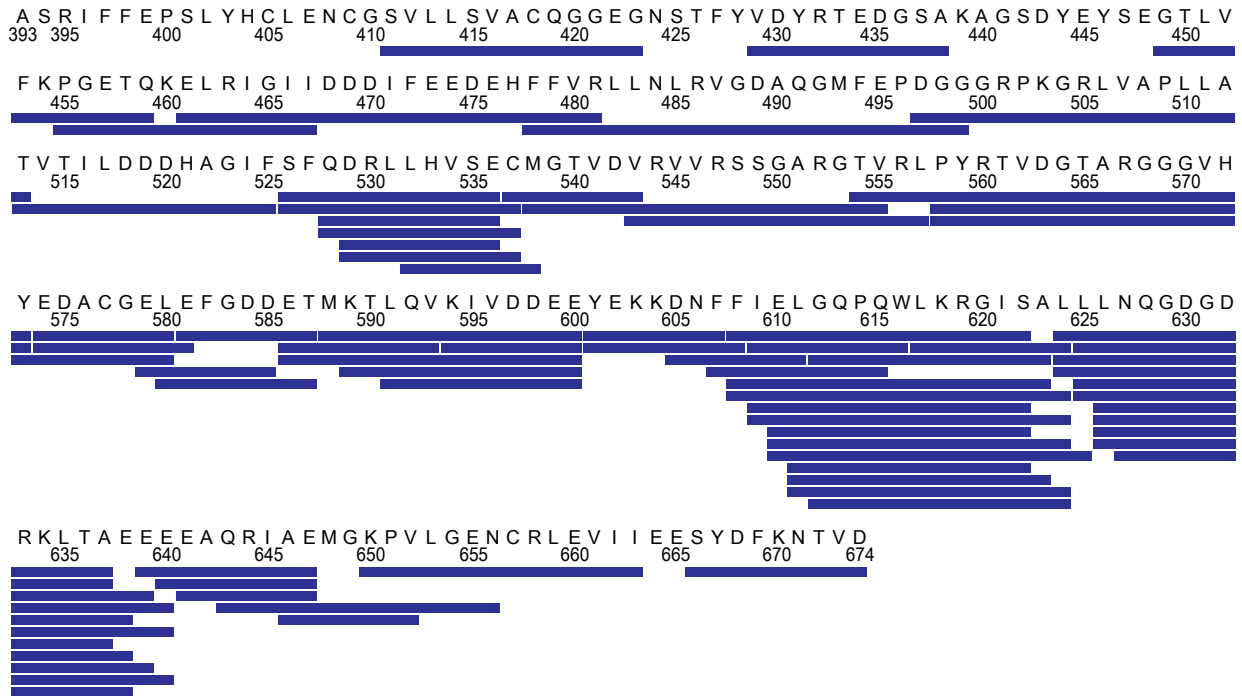
Figure S1. Sequence coverage of NCX2-CBD12 and NCX3-CBD12. (A) Peptic peptides of NCX2-CBD12 are displayed as blue bars. (B) Peptic peptides of NCX3-CBD12-AC are displayed as pink bars, peptic peptides of NCX3-CBD12-B are displayed as light-blue bars, and peptic peptides identical in both splice variants are displayed as blue bars.

Figure S2. HDX-MS profiles of NCX2-CBD12 and NCX3-CBD12. HDX-MS profiles of apo NCX2-CBD12 (A), Ca²⁺-bound NCX2-CBD12 (B), apo NCX3-CBD12-AC (C), Ca²⁺-bound NCX3-CBD12-AC (D), apo NCX3-CBD12-B (E), and Ca²⁺-bound NCX3-CBD12-B (F) at different deuterium uptake duration (as indicated) are overlaid on the models of the respective proteins.

Figure S3. HDX-MS uptake plots of NCX2-CBD12 and NCX3-CBD12. The uptake plots of selected peptides affected by Ca²⁺ binding in NCX2 (A), NCX3-AC (B), and NCX3-B (C) are displayed. * p < 0.05.

Figure S1

A NCX2-CBD12



B NCX3-CBD12-AC/B

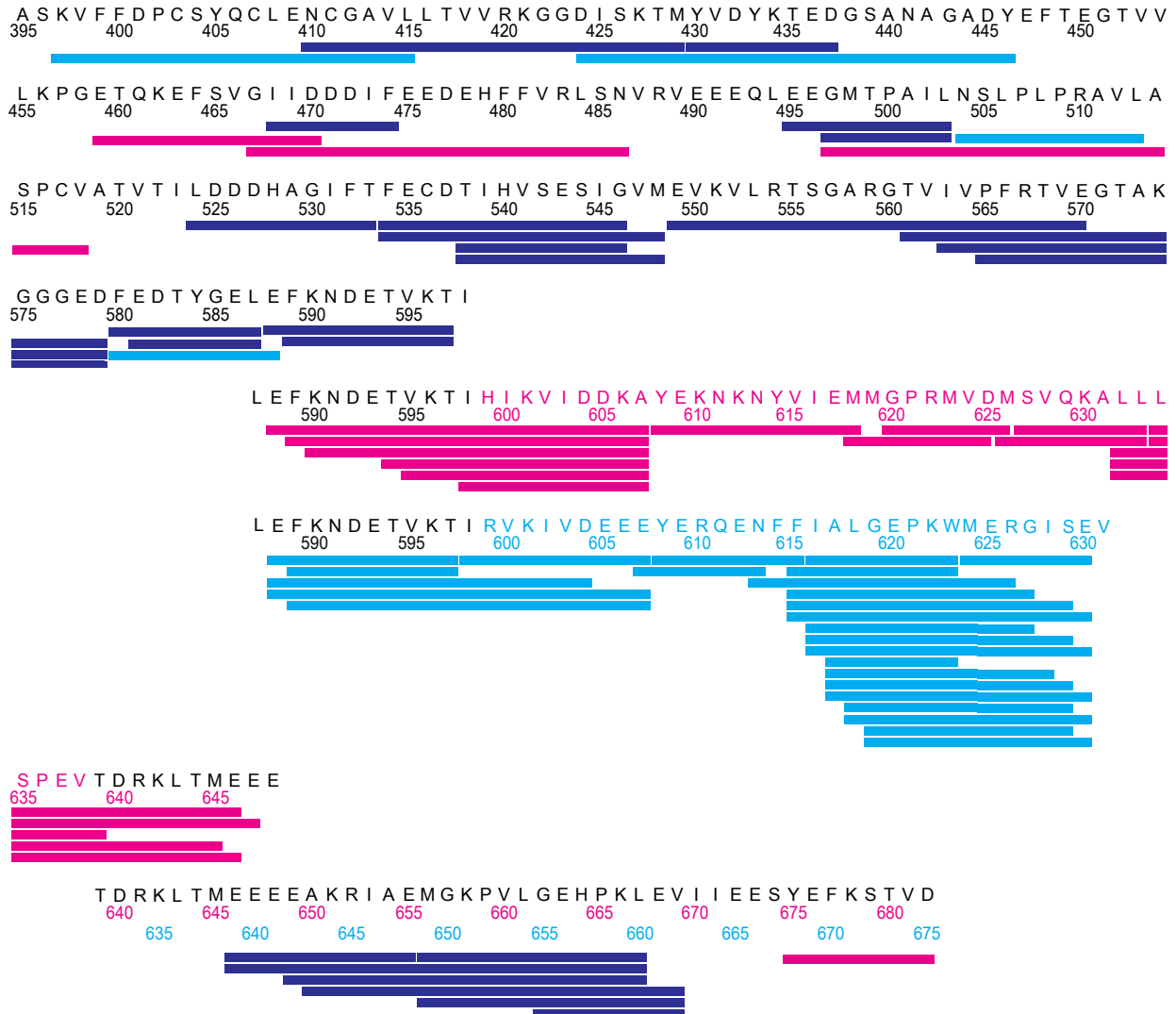
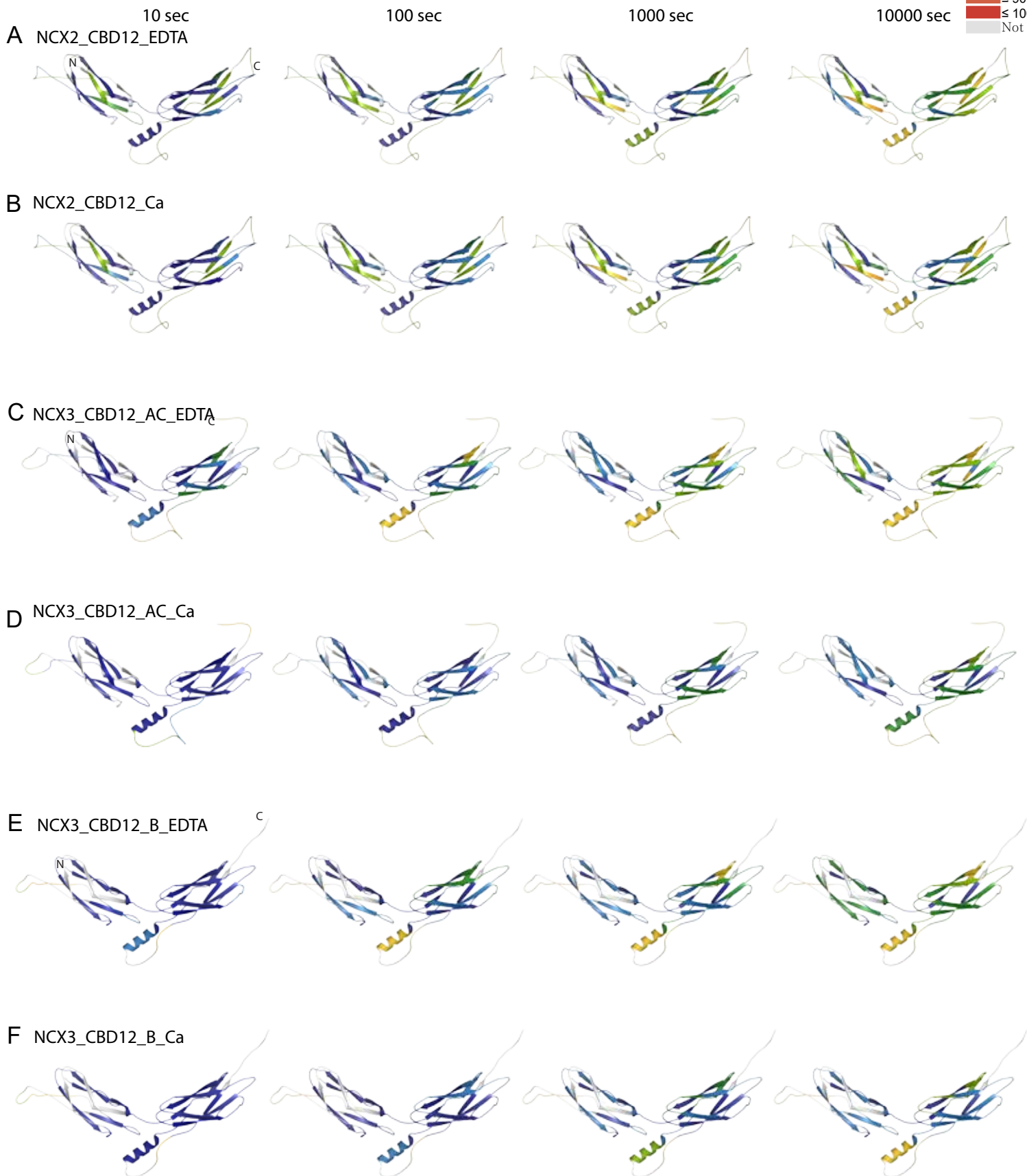
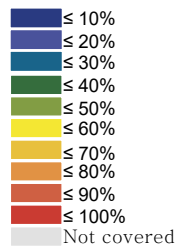
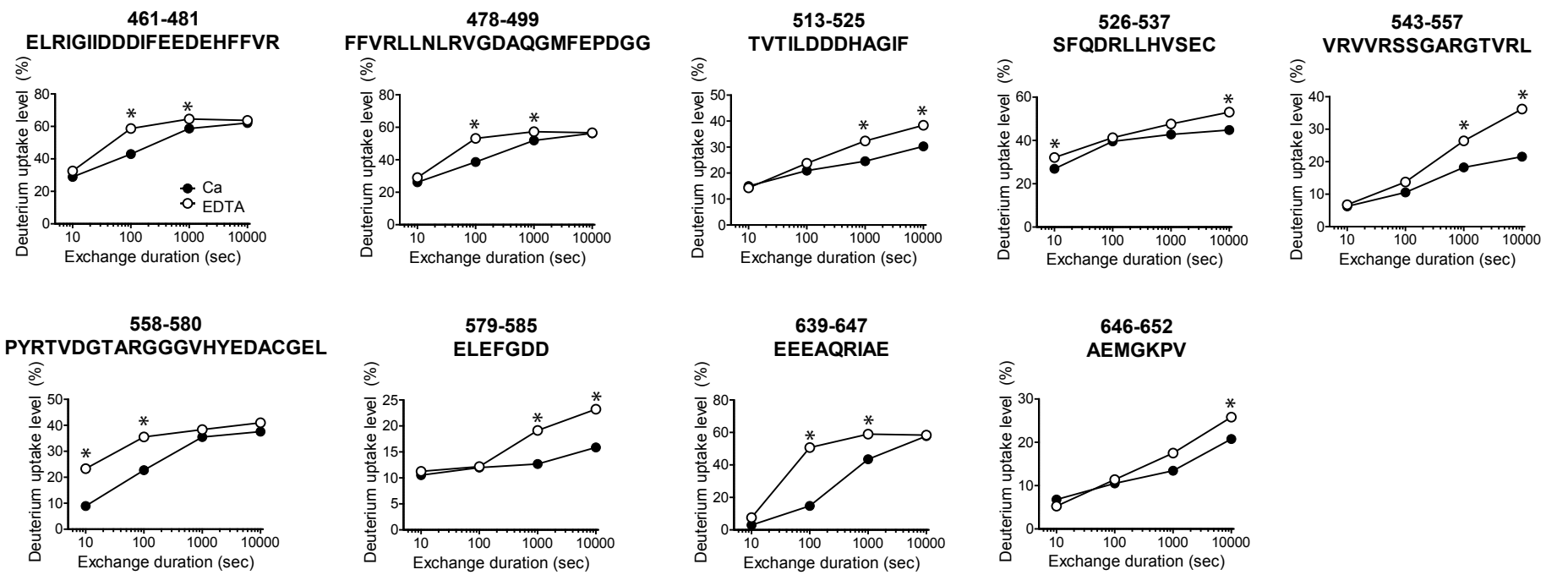


Figure S2

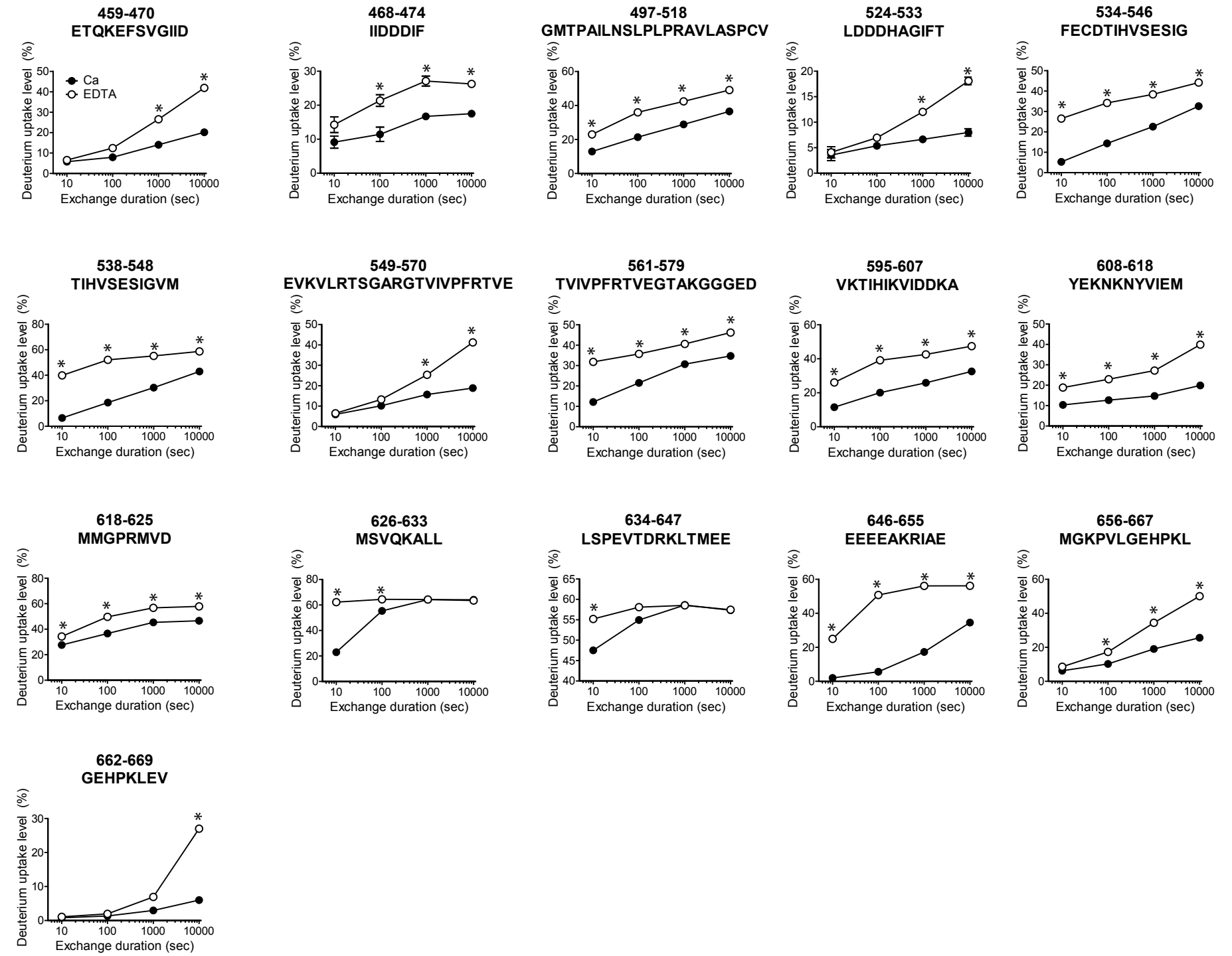


NCX2_CBD12

Figure S3



NCX3_CBD12_AC



NCX3_CBD12_B

