

Supplementary Information for "Transcriptional landscape of epithelial and immune cell populations revealed through FACS-seq of healthy human skin"

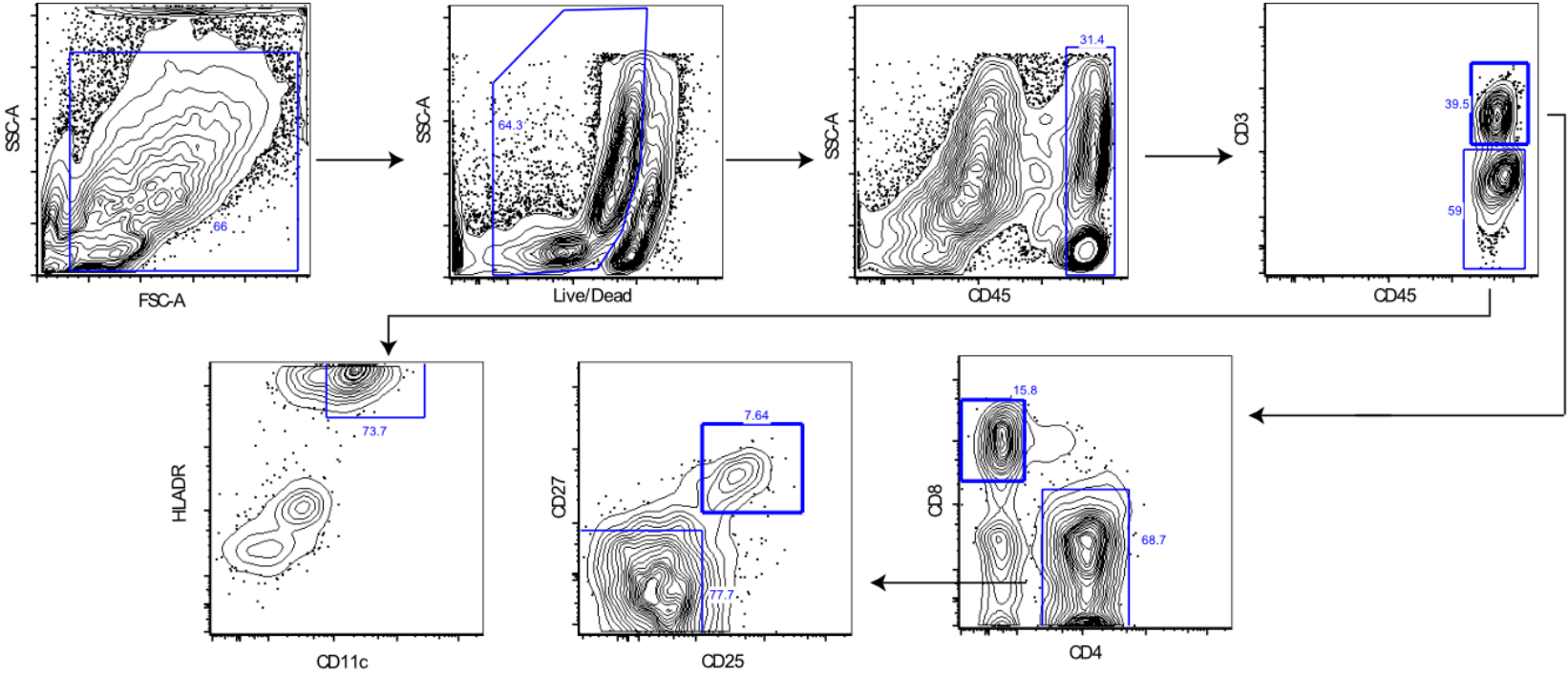
Richard S. Ahn^{1*}, Keyon Taravati¹, Kevin Lai¹, Kristina M. Lee¹, Joanne Nititham¹,
Rashmi Gupta¹, David S. Chang^{2,3}, Sarah T. Arron¹, Michael Rosenblum¹, Wilson Liao¹

¹Department of Dermatology, University of California, San Francisco, San Francisco, CA. ²Department of Plastic Surgery, California Pacific Medical Center, San Francisco, CA

³Department of Surgery, University of California, San Francisco, San Francisco, CA

*Correspondence should be addressed to Richard Ahn, PhD, Department of Dermatology, University of California, San Francisco, 2340 Sutter Street, Box 0808, San Francisco, CA 94143-0808, USA (email: richard.ahn@ucsf.edu)

Supplementary Figure 1a. FACS gating strategy for sorting out CD4+ T effectors, CD8+ T cells, and dendritic cells.



Supplementary Figure 1b. FACS gating strategy for isolating keratinocytes.

