

Title: Assessment of neutrophil-to-lymphocyte ratio, platelet-to-lymphocyte ratio and platelet count as predictors of long-term outcome after R0 resection for colorectal cancer.

Authors: Corrado Pedrazzani,*¹ Guido Mantovani,¹ Eduardo Fernandes,² Fabio Bagante,¹ Gian Luca Salvagno,³ Niccolò Surci,¹ Tommaso Campagnaro,¹ Andrea Ruzzenente,¹ Elisa Danese,³ Giuseppe Lippi,³ Alfredo Guglielmi.¹

Authors' affiliation: ¹Division of General and Hepatobiliary Surgery, Department of Surgical Sciences, Dentistry, Gynecology and Pediatrics, University of Verona, Verona, Italy; ²Division of Minimally Invasive, General and Robotic Surgery, University of Illinois at Chicago, Chicago, US; ³Section of Clinical Biochemistry, Department of Neurological, Biomedical and Movement Sciences, University of Verona, Verona, Italy

Correspondence to: Dott. Corrado Pedrazzani, Chirurgia Generale e Epatobiliare, Policlinico "G.B. Rossi", Piazzale Scuro 10, 37134 Verona, Italia. Tel: ++39 (0)45 8124464-4655; Fax: ++39 (0)45 8027426; E-mail: corrado.pedrazzani@univr.it

Table S1. Multivariable survival analysis including platelet-to-lymphocyte ratio (PLR) for the 603 patients under study.

	Overall Survival		Cancer-related Survival	
	HR (95% CI)	p value	HR (95% CI)	p value
Age (years)		<0.001		0.013
≤ 68.9 years	-		-	
> 68.9 years	3.14 (2.18-4.53)		1.75 (1.13-2.71)	
Gender		0.058		0.058
Female	-		-	
Male	1.39 (0.99-1.95)		1.56 (0.99-2.45)	
Histological Type		0.66		0.11
Adenocarcinoma	-		-	
Mucinous	0.91 (0.59-1.38)		0.62 (0.34-1.12)	
TNM Stage		<0.001		<0.001
Stage I	-		-	
Stage II	1.55 (0.87-2.74)		2.67 (0.89-7.96)	
Stage III	2.83 (1.61-4.97)		9.59 (3.41-26.99)	
Stage IV	7.11 (3.79-13.33)		30.63 (10.58-86.67)	
Platelet-to-lymphocyte ratio		0.034		0.22
L-PLR	-		-	
H-PLR	1.86 (1.05-3.32)		1.64 (0.74-3.62)	

^a Values in parentheses are 95% confidence intervals. Hazard ratio and p values were derived from Cox regression analysis, controlling for all other variables.

Table S2. Multivariable survival analysis including platelet count (PC) for the 603 patients under study.

	Overall Survival		Cancer-related Survival	
	HR (95% CI)	p value	HR (95% CI)	p value
Age (years)		<0.001		0.013
≤ median	-		-	
> median	3.15 (2.18-4.53)		1.73 (1.12-2.67)	
Gender		0.033		0.046
Female	-		-	
Male	1.45 (1.03-2.05)		1.59 (1.01-2.51)	
Histological Type		0.49		0.09
Adenocarcinoma	-		-	
Mucinous	0.86 (0.57-1.31)		0.59 (0.33-1.08)	
TNM Stage		<0.001		<0.001
Stage I	-		-	
Stage II	1.53 (0.86-2.71)		2.59 (0.87-7.71)	
Stage III	2.76 (1.57-4.85)		9.18 (3.26-25.84)	
Stage IV	6.81 (3.62-12.8)		30.06 (10.37-87.14)	
Platelet count		0.036		0.07
L-PC	-		-	
H-PC	1.48 (1.03-2.13)		1.53 (0.96-2.45)	

^a Values in parentheses are 95% confidence intervals. Hazard ratio and p values were derived from Cox regression analysis, controlling for all other variables.

Figure legends

Figure S1. Receiver Operating Characteristic curves plotting the true-positive rate (sensitivity) against the false-positive rate (1-specificity) at various threshold of a) NLR, b) PLR, and c) PC as predictors of overall survival.

Figure S2. Kaplan-Meier curves for a) overall survival ($p=0.070$) and b) cancer-related survival ($p=0.239$) stratified by PLR

Figure S3. Kaplan-Meier curves for a) overall survival ($p=0.122$) and b) cancer-related survival ($p=0.151$) stratified by PC

Figure S4. Linear regression analysis modelling the relationship between age and NLR in a) CRC patients ($r=0.076$; $r^2=0.006$; $p=0.063$) and b) control population ($r=0.008$; $r^2=0.000$; $p=0.560$)

Figure S5. Linear regression analysis modelling the relationship between age and PLR in a) CRC patients ($r=0.015$; $r^2=0.000$; $p=0.727$) and b) control population ($r=0.068$; $r^2=0.005$; $p<0.001$)

Figure S6. Linear regression analysis modelling the relationship between age and PC in a) CRC patients ($r=0.155$; $r^2=0.024$; $p<0.001$) and b) control population ($r=0.056$; $r^2=0.003$; $p<0.001$)

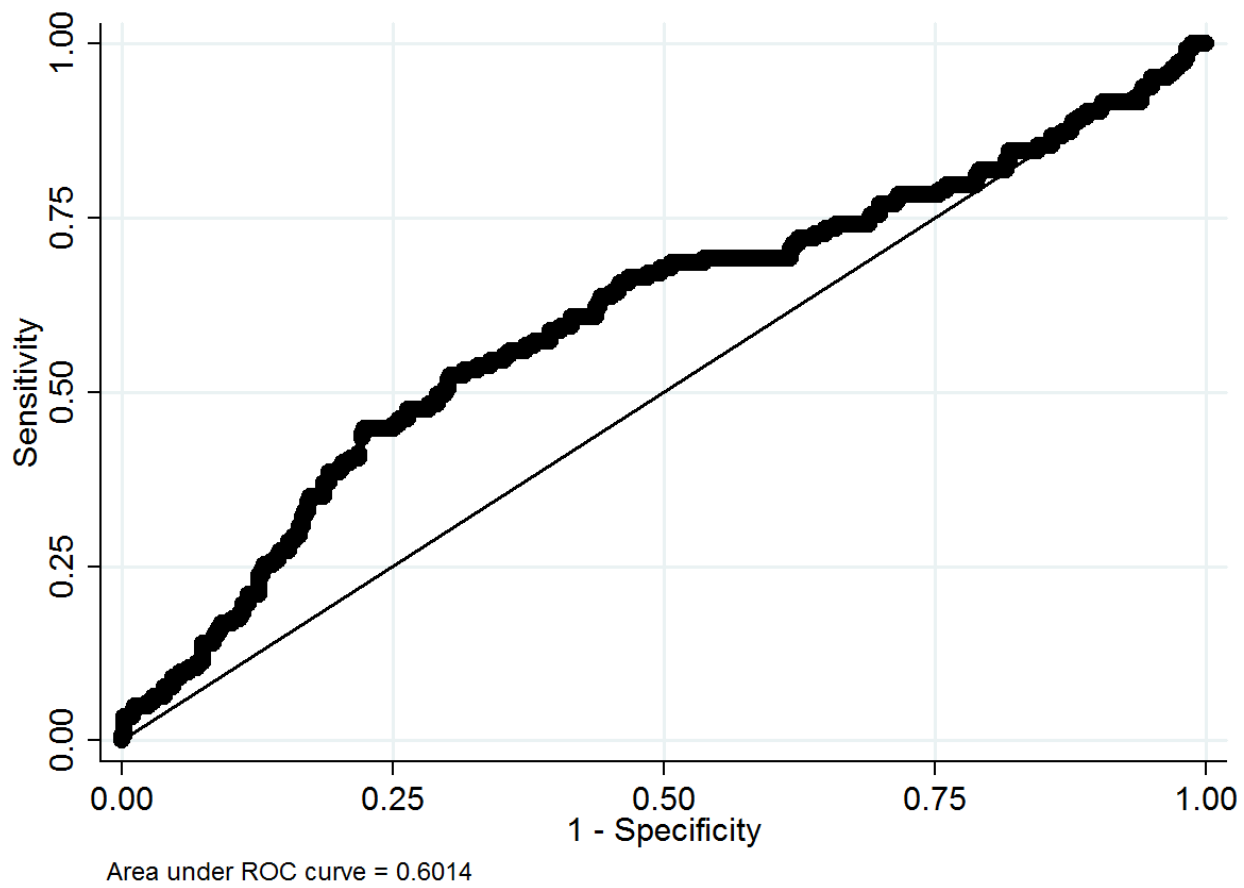


Figure S1(a)

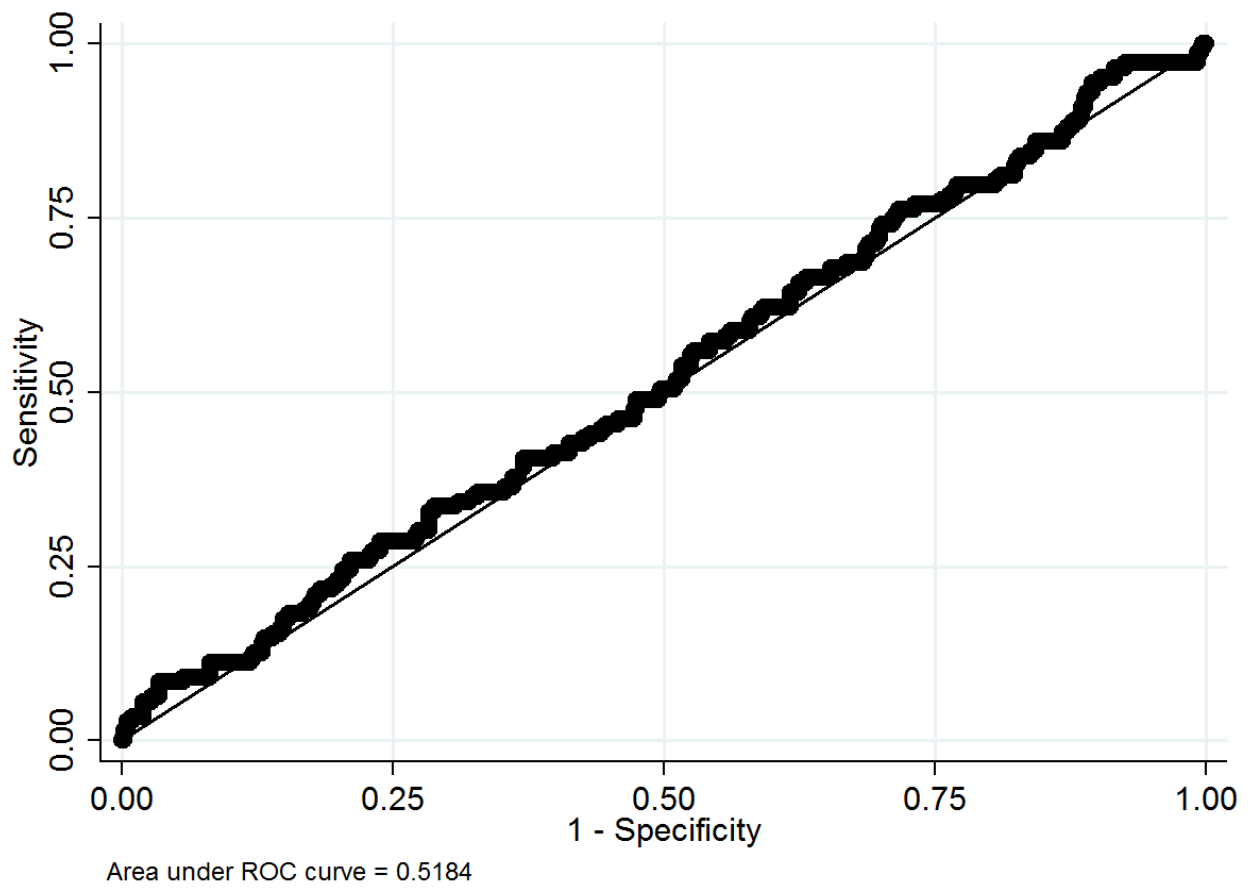


Figure S1(b)

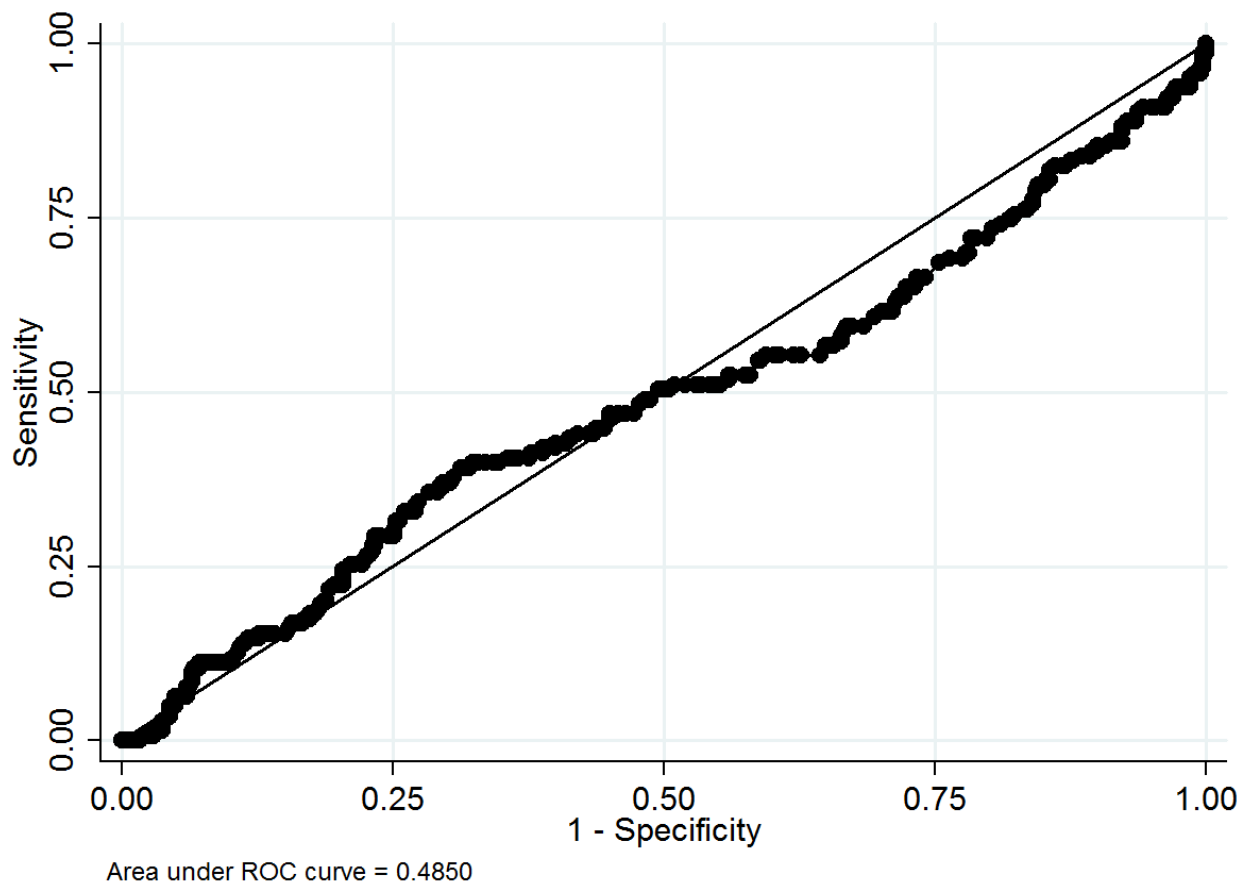


Figure S1(c)

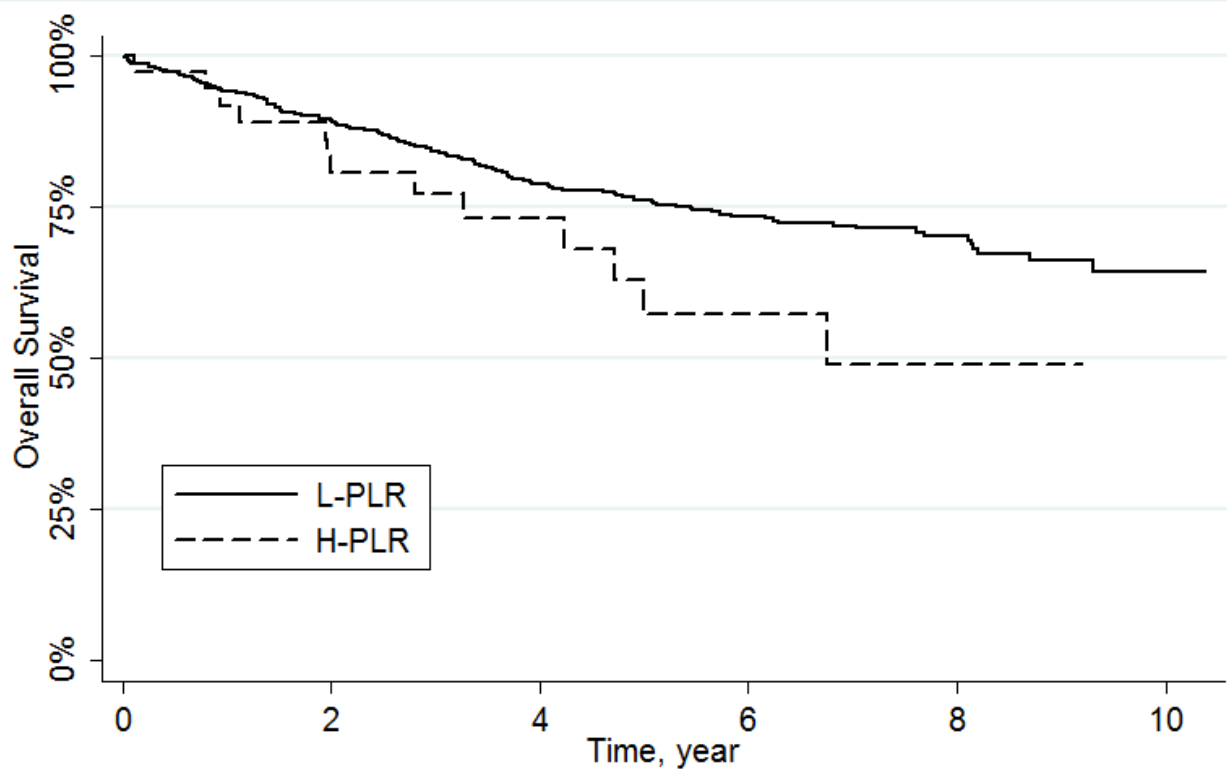


Figure S2(a)

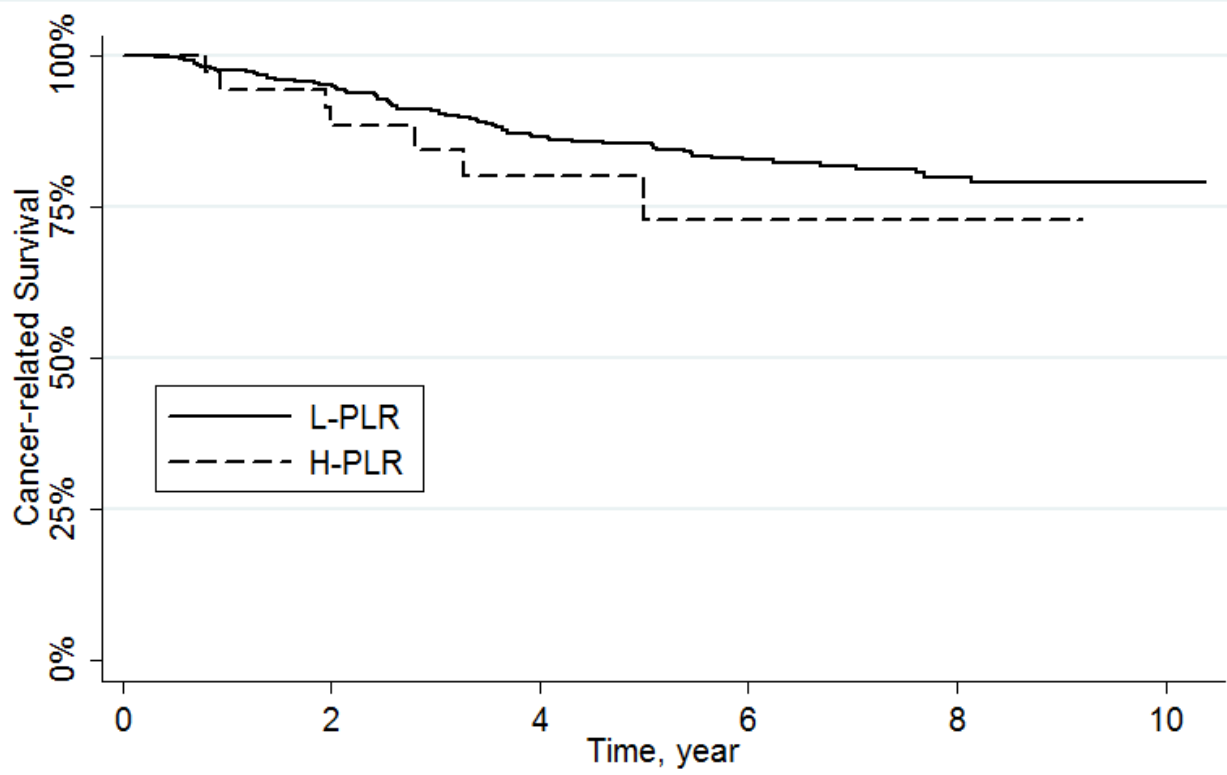


Figure S2(b)

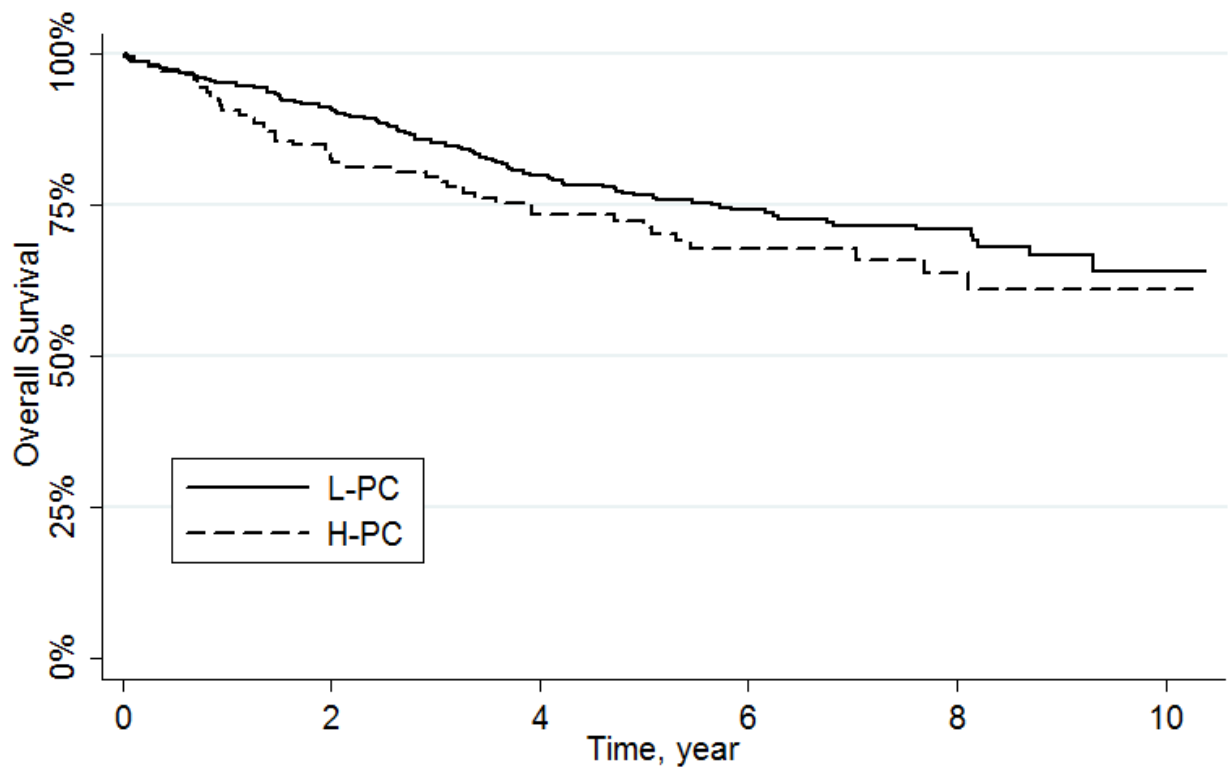


Figure S3(a)

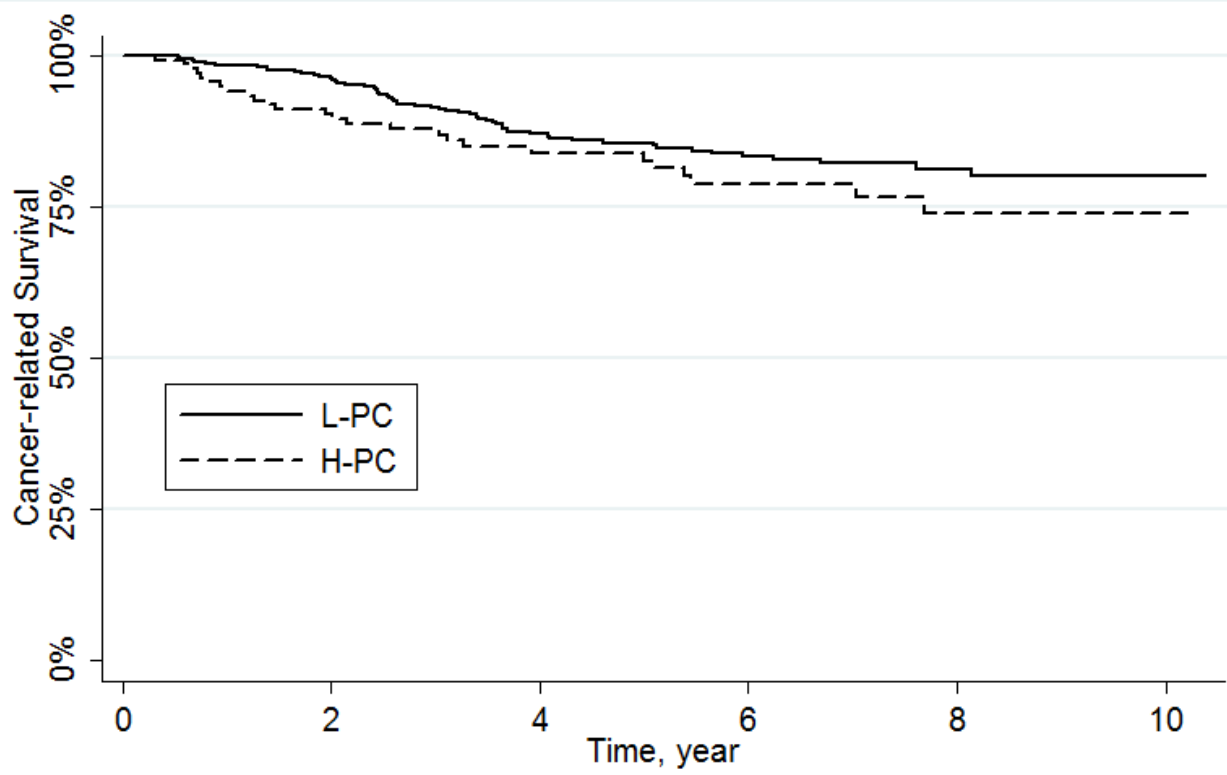


Figure S3(b)

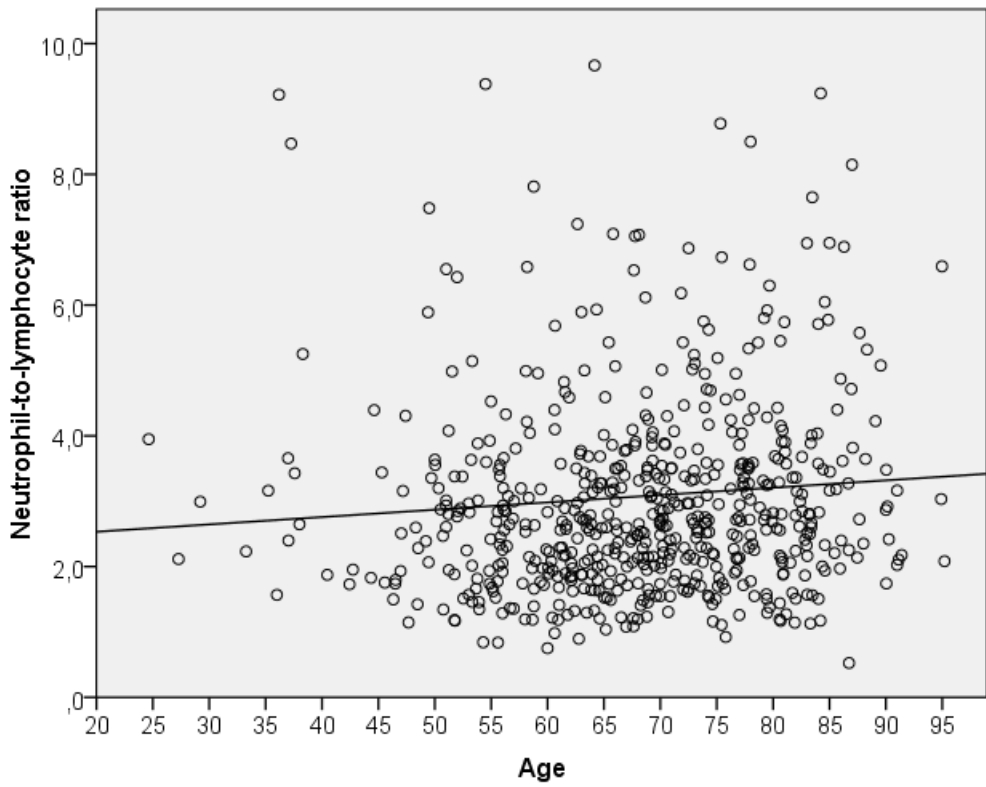


Figure S4(a)

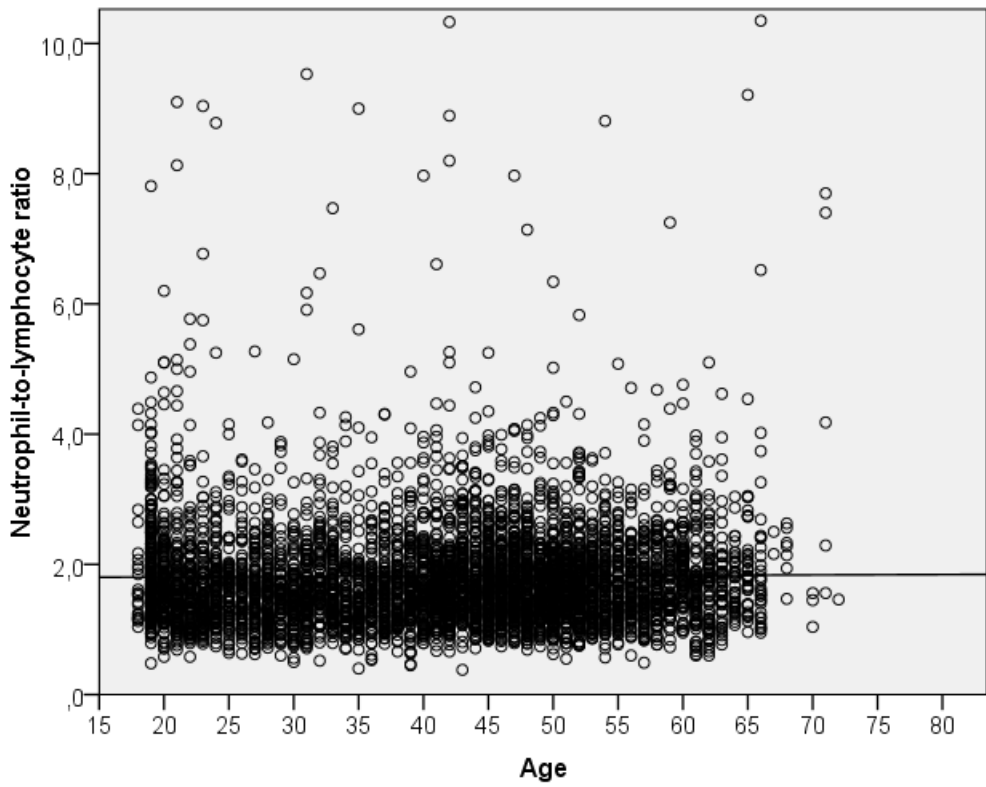


Figure S4(a)

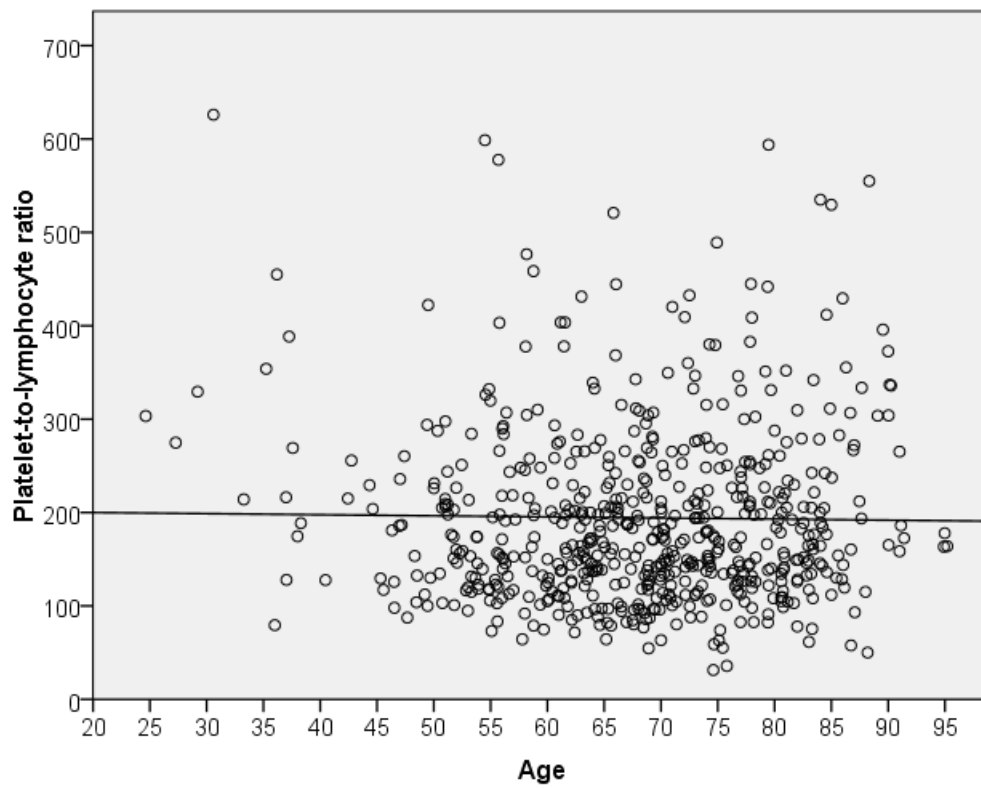


Figure S5(a)

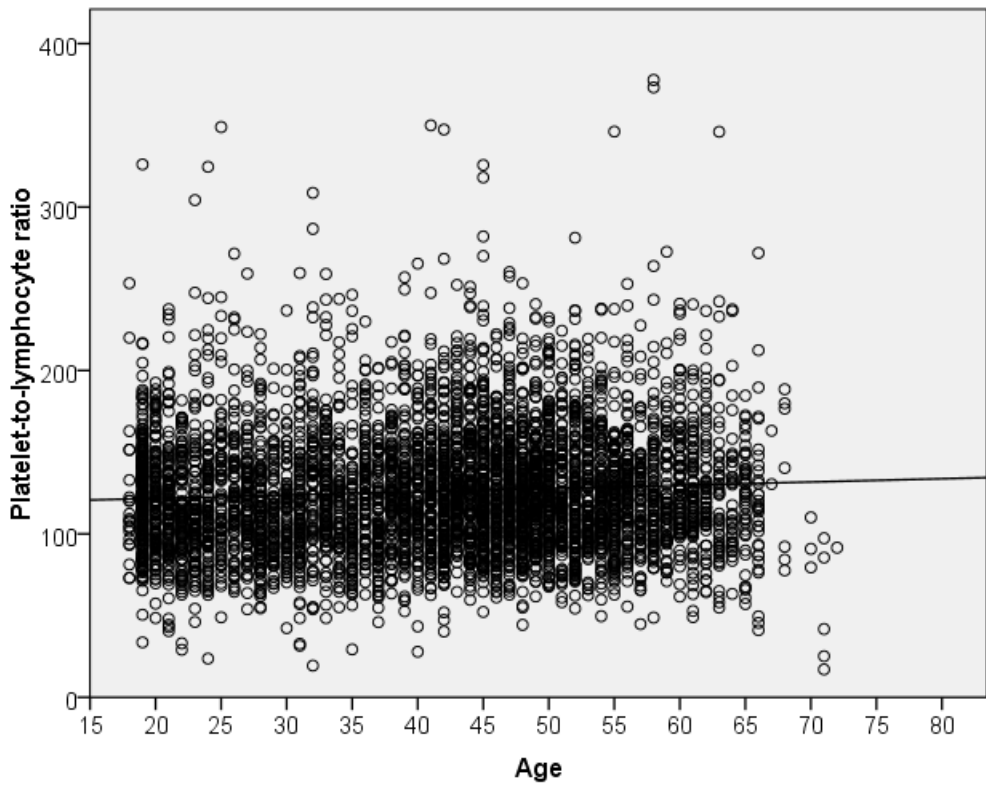


Figure S5(b)

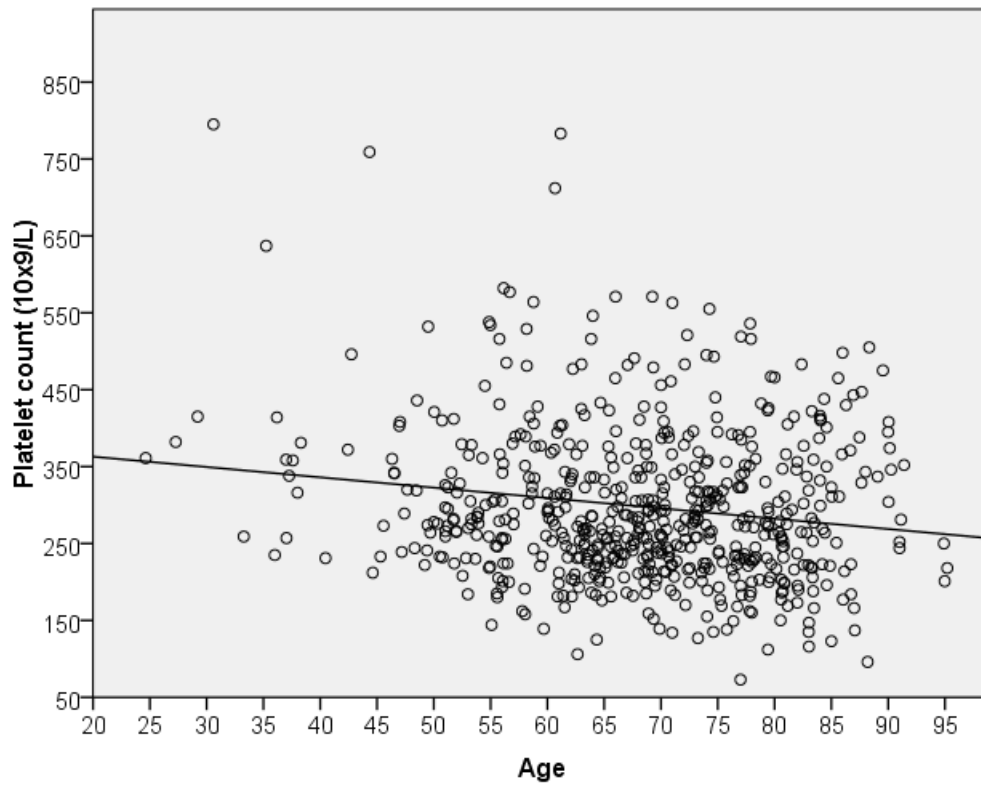


Figure S6(a)

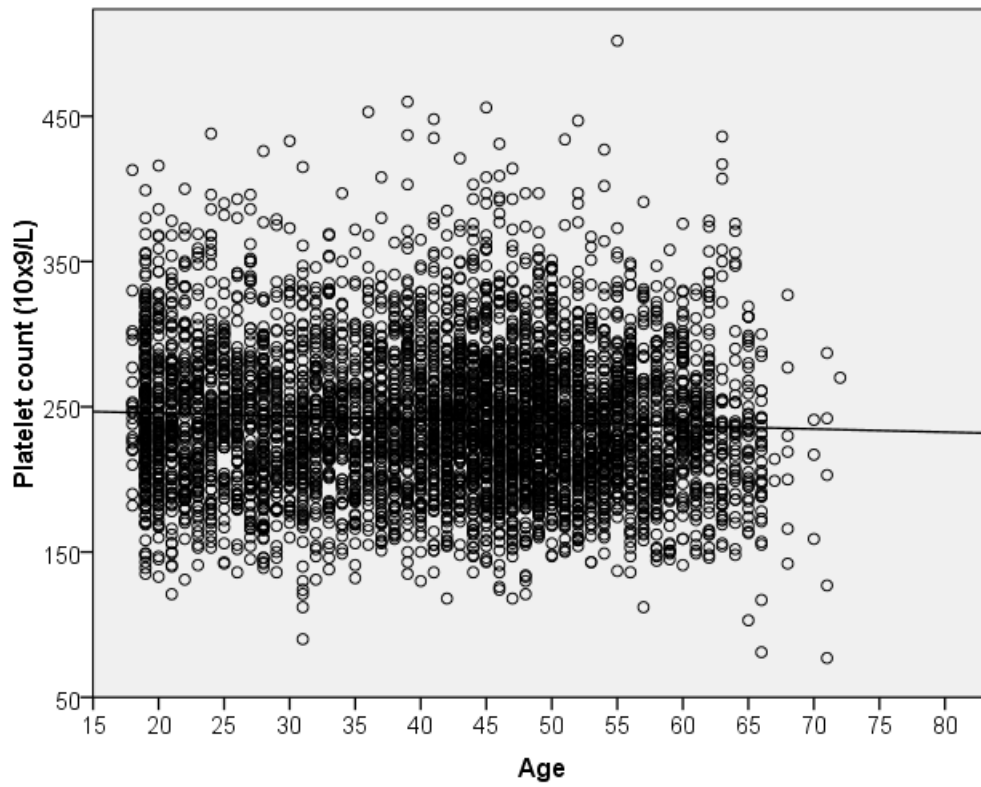


Figure S6(b)