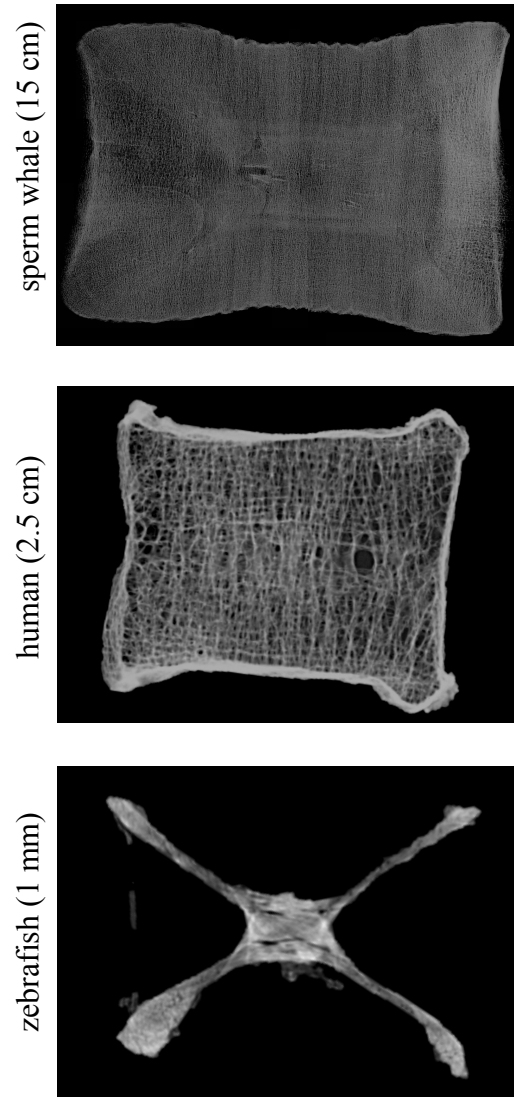


Supplemental Figure:

“Vertebral bone microarchitecture and osteocyte characteristics of three toothed whale species with varying diving behaviour.” by T Rolvien, M Hahn, U Siebert, K Püschel, H-J Wilke, B Busse, M Amling, and R Oheim



Contact radiography of the L1 vertebral body indicates the differences among sperm whale, human and zebrafish. While human vertebral bodies are composed of cortical bone and a relatively homogenous trabecular structure, both whales and zebrafish (as well as most other fish) show a central concentration of bone mass (Anterior vertebral body height in parentheses).