

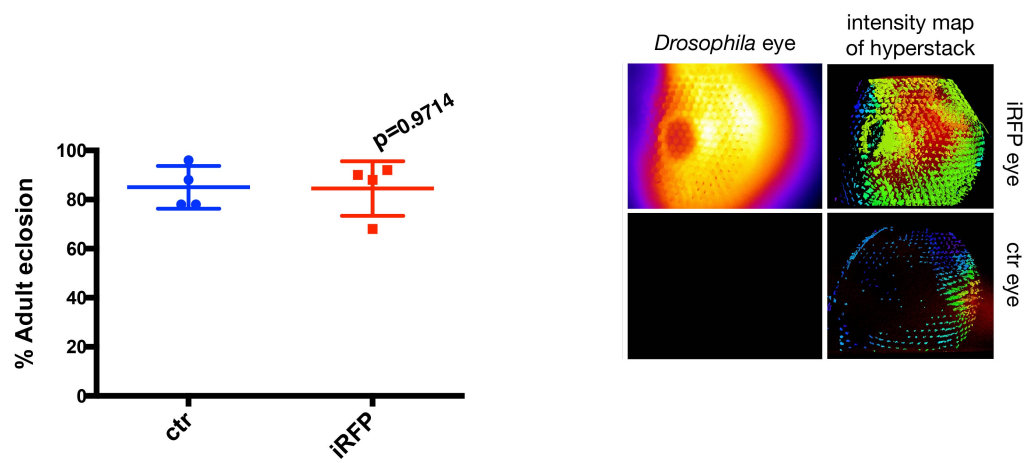
Development of an inducible mouse model of iRFP713 to track
recombinase activity and tumour development *in vivo*.

*Andreas K. Hock¹, Eric Cheung¹, Timothy J. Humpton¹, Tiziana Monteverde¹, Viola Paulus-Hock², Pearl Lee¹,
Ewan McGhee¹, Alessandro Scopelliti¹, Daniel J. Murphy¹, Douglas Strathdee¹, Karen Blyth¹ and Karen H.
Vousden^{1,3}*

¹*Cancer Research UK Beatson Institute, Switchback Road, Glasgow, G61 1BD, UK*

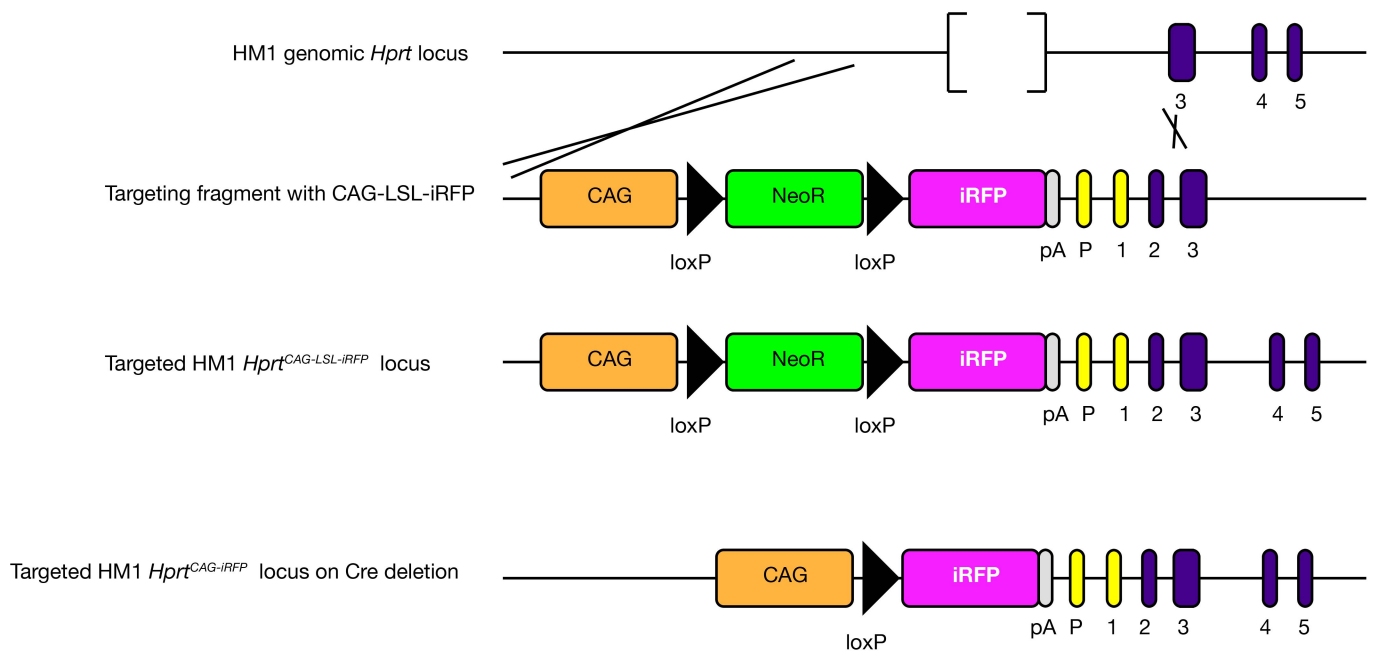
²*Institute of Cancer Sciences, University of Glasgow, Switchback Road, Glasgow, G61 1QH, UK*

³*Corresponding author*

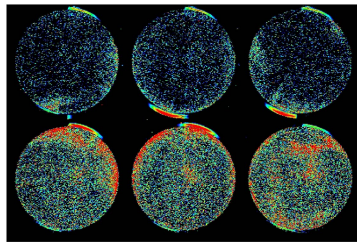


Supplementary Figure 1:

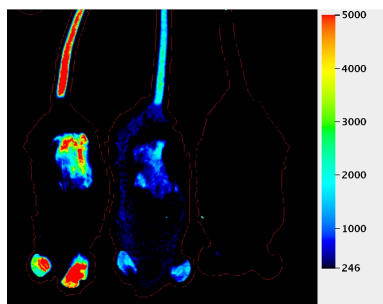
Left: Adult eclosion of control and iRFP *Drosophila*. Bars represents mean and SD.
 Right: Microscopic analysis of *Drosophila* eye.



Supplementary Figure 2: Knock-in strategy of LSL-iRFP

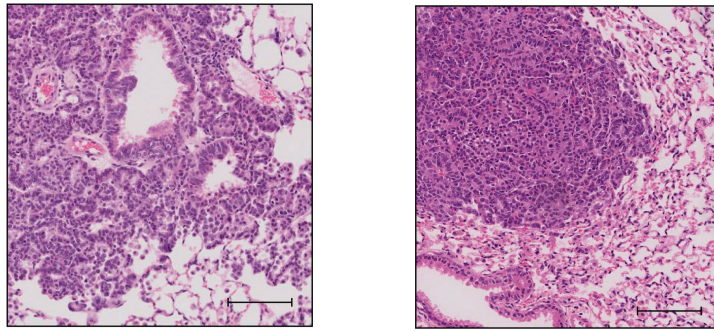


Supplementary Figure 3: LI-COR Odyssey scan of Cre induced mouse embryonic stem cells (mESCs). Deletion of the STOP cassette by transient expression of Cre in transfected mESC allows expression of iRFP and selection of clones.

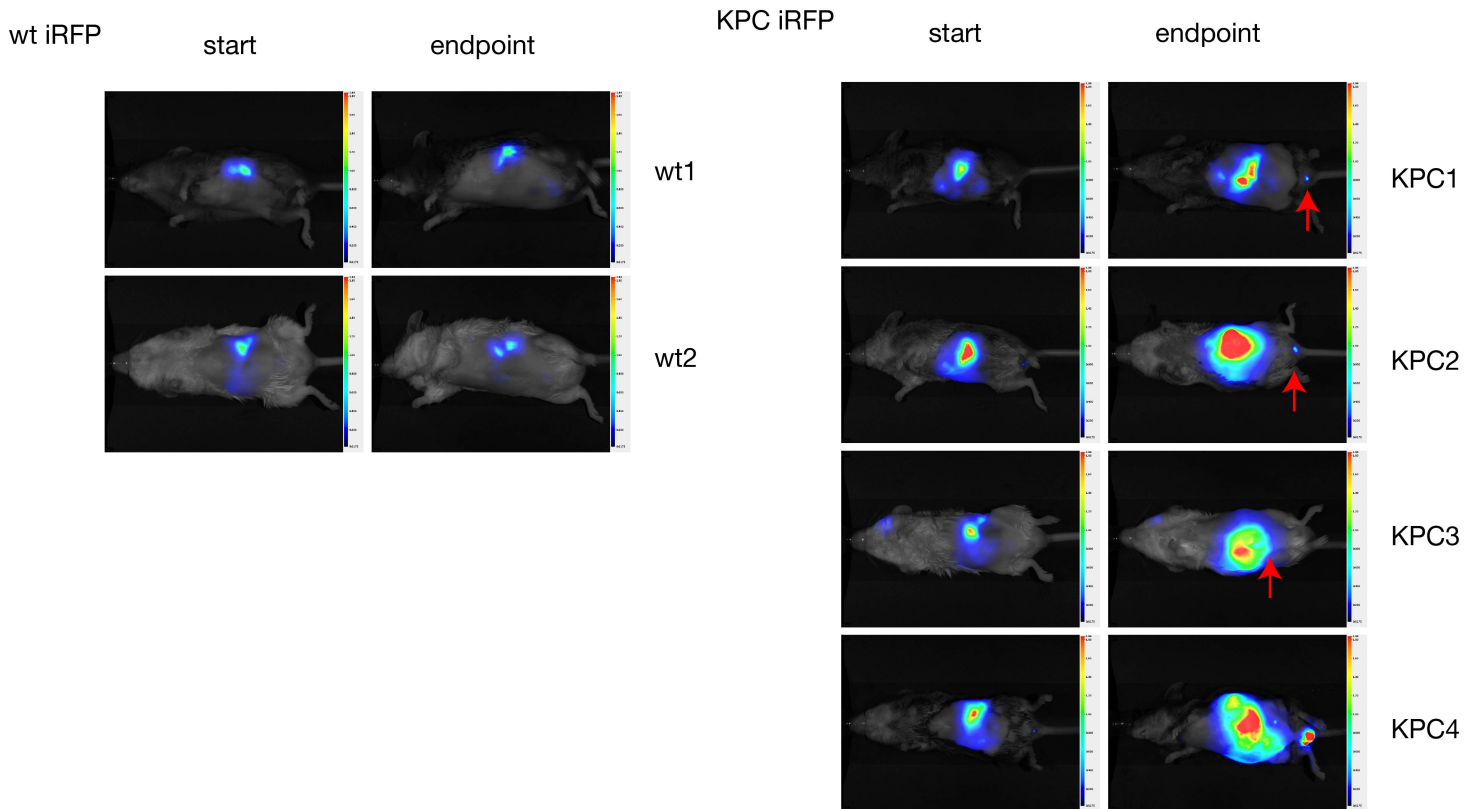


treated 4X control
single treatment

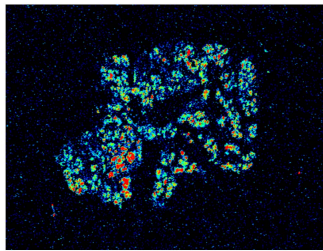
Supplementary Figure 4: Scan of tamoxifen induced mice.
Animals were induced as indicated and imaged on a LI-COR Odyssey.



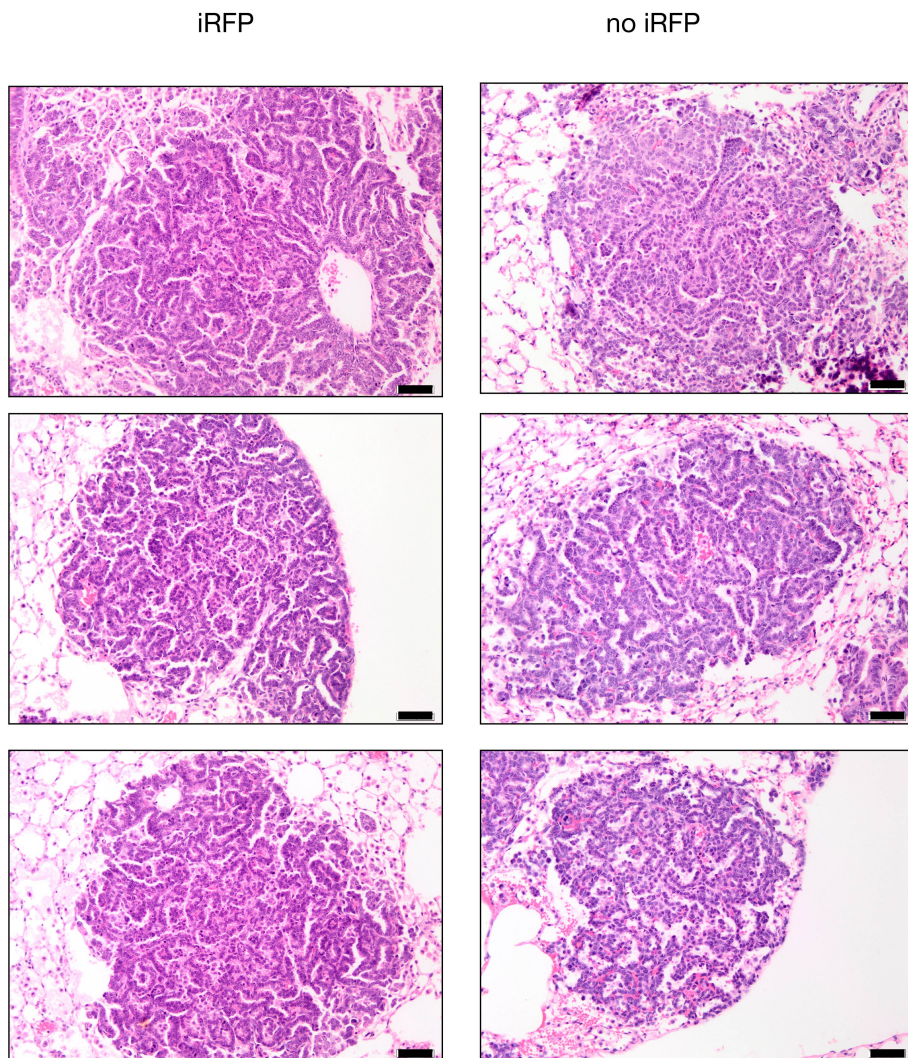
Supplementary Figure 5: HE stains of resected lung. Scale bar equals 100 μ m.



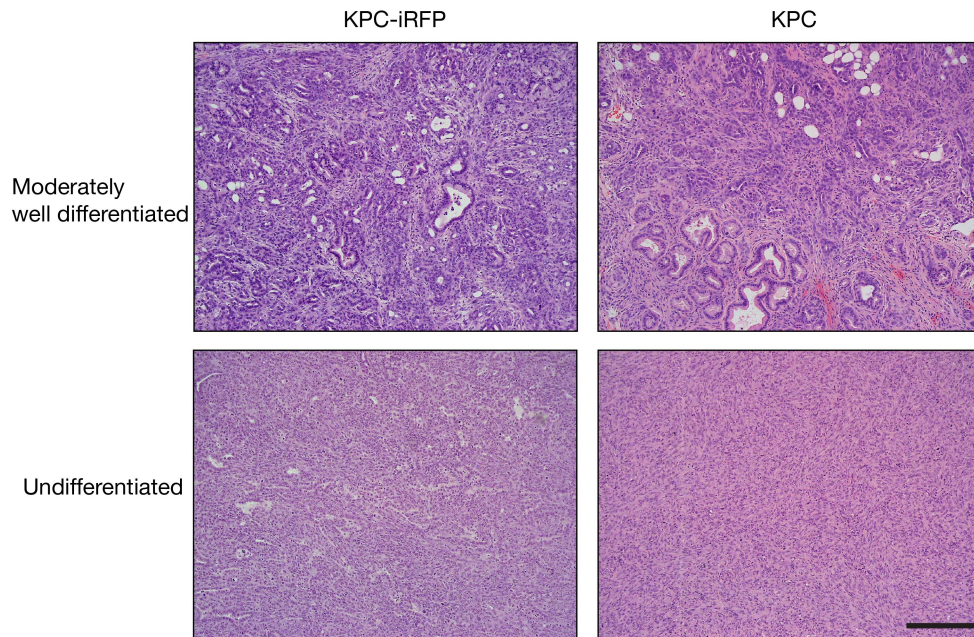
Supplementary Figure 6: LI-COR PEARL images of mice quantified in Fig. 4d. The red arrow highlights anal papilloma. Identical LUTs were used.



Supplementary Figure 7: LI-COR Odyssey scan of pancreatic tumor frozen section.



Supplementary Figure 8: Histological comparison of lung tumours with and without iRFP. Different lung tumours from an animal with (left) and without iRFP (right) have similar histology. Bar is 500µm



Supplementary Figure 9: Histological comparison of PDAC with and without iRFP. Both KPC with and without iRFP have similar histology of PDAC, such as moderately well differentiated with some glandular features (upper panels) and relatively more undifferentiated morphology (lower panels). Bar is 20 μ m.