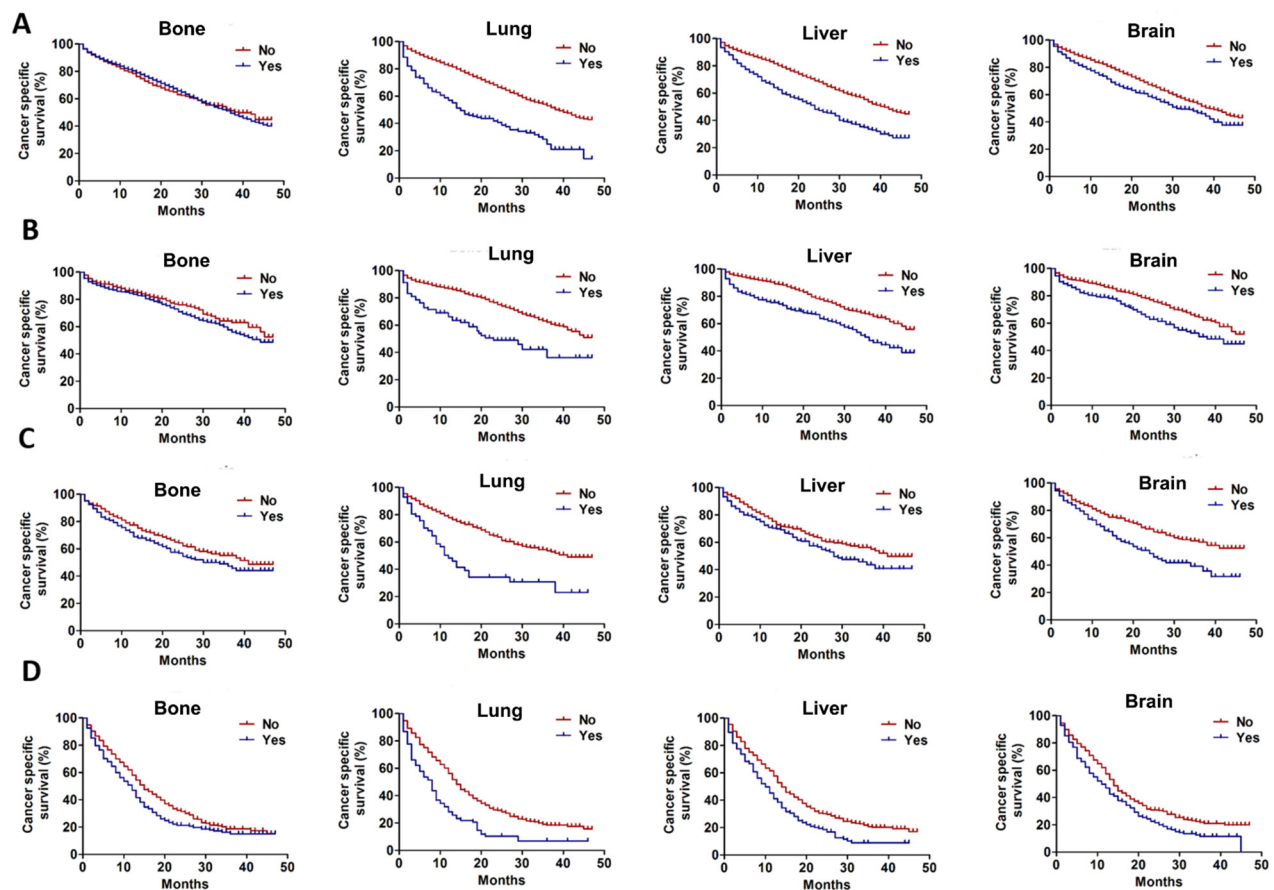


The prognosis analysis of different metastasis pattern in patients with different breast cancer subtypes: a SEER based study

SUPPLEMENTARY FIGURE



Supplementary Figure 1: The effect of specific metastasis site on CSS in breast cancer patients according different BCS. **A.** the effect of specific metastasis site on CSS in breast cancer patients with HR+/HER2- (bone: $\chi^2=0.085$, $P=0.770$; lung: $\chi^2=111.75$, $P<0.001$; liver: $\chi^2=158.71$, $P<0.001$; brain: $\chi^2=45.17$, $P<0.001$). **B.** the effect of specific metastasis site on CSS in breast cancer patients with HR+/HER2+ (bone: $\chi^2=1.82$, $P=0.177$; lung: $\chi^2=20.163$, $P<0.001$; liver: $\chi^2=52.81$, $P<0.001$; brain: $\chi^2=15.75$, $P<0.001$). **C.** the effect of specific metastasis site on CSS in breast cancer patients with HR-/HER2+ (bone: $\chi^2=4.11$, $P=0.043$; lung: $\chi^2=28.64$, $P<0.001$; liver: $\chi^2=15.58$, $P<0.001$; brain: $\chi^2=20.34$, $P<0.001$). **D.** the effect of specific metastasis site on CSS in breast cancer patients with HR-/HER2- (bone: $\chi^2=15.10$, $P<0.001$; lung: $\chi^2=39.94$, $P<0.001$; liver: $\chi^2=29.93$, $P<0.001$; brain: $\chi^2=18.54$, $P<0.001$).