

Supporting Information

for

The effect of cyclodextrin complexation on the solubility and photostability of nerolidol as pure compound and as main constituent of cabreuva essential oil

Joyce Azzi^{1,2}, Pierre-Edouard Danjou², David Landy², Steven Ruellan², Lizette Auezova¹, H el ene Greige-Gerges¹ and Sophie Fourmentin^{*2}

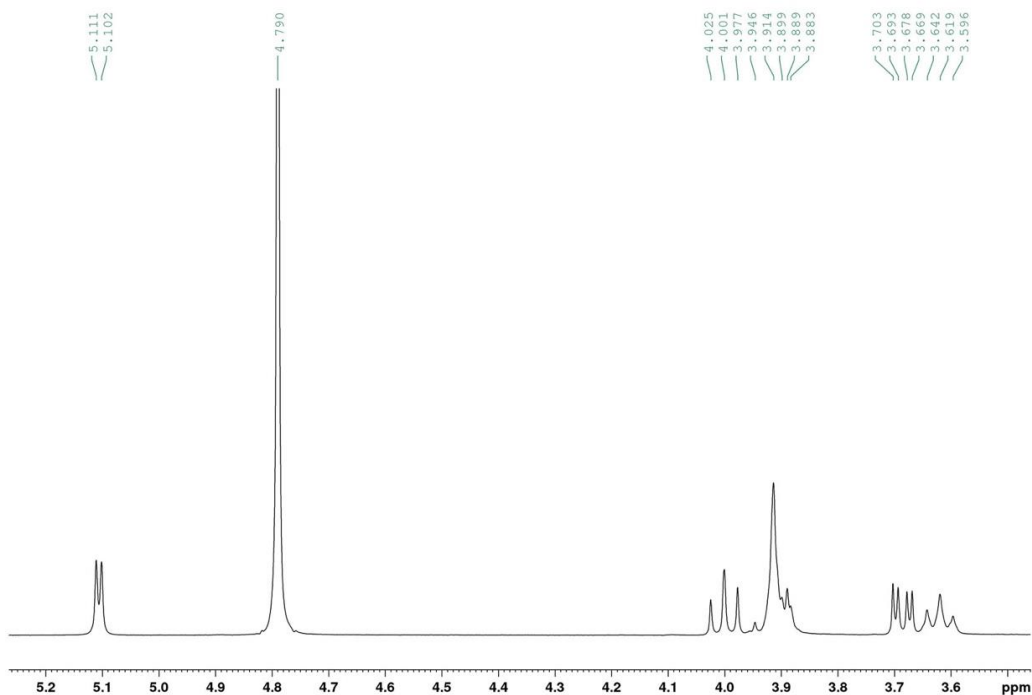
Address: ¹Bioactive Molecules Research Group, Doctoral School of Sciences and Technologies, Faculty of Sciences, Jdaidet El-Matn, Lebanese University, Lebanon and ²Unit e de Chimie Environnementale et Interactions sur le Vivant (UCEIV, EA 4492), SFR Condorcet FR CNRS 3417, ULCO, F-59140 Dunkerque, France.

Email: Sophie Fourmentin - lamotte@univ-littoral.fr

*Corresponding author

¹H NMR spectra

(a)



(b)

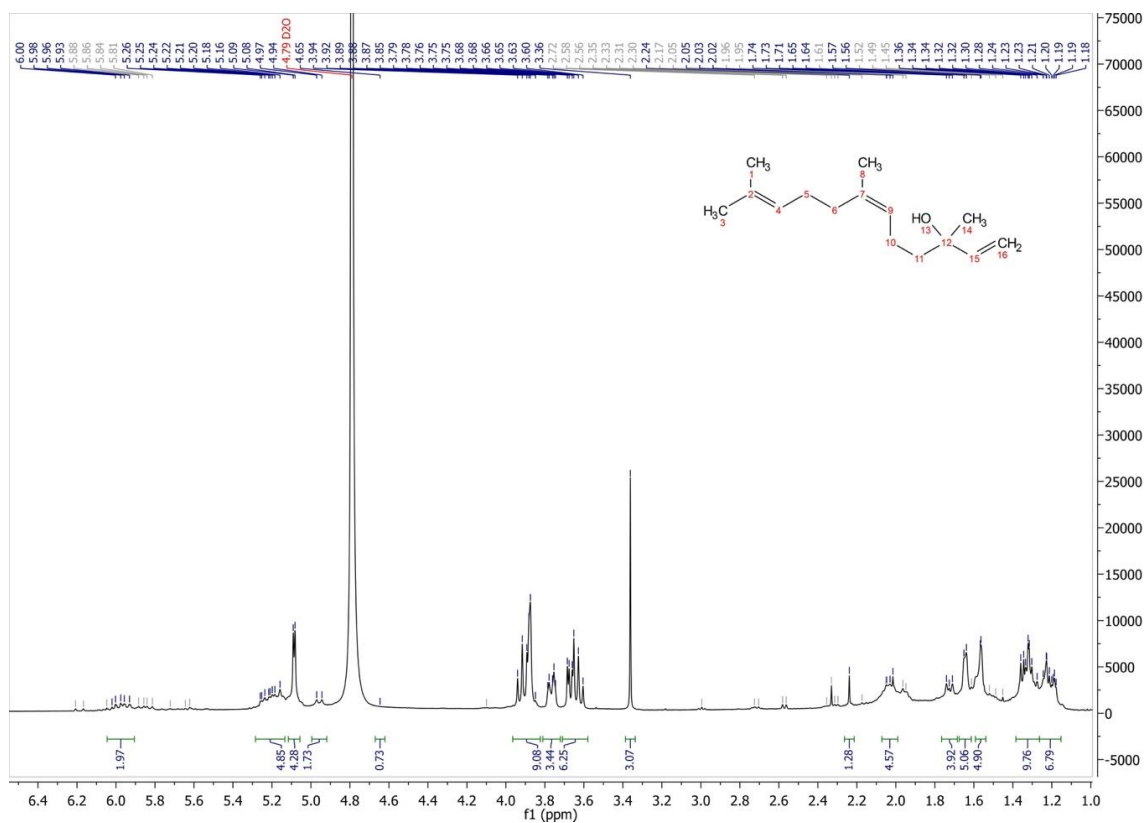


Figure 1: ^1H RMN spectra for β -CD (a) and β -CD/trans-Ner inclusion complex (b) solutions in D_2O .