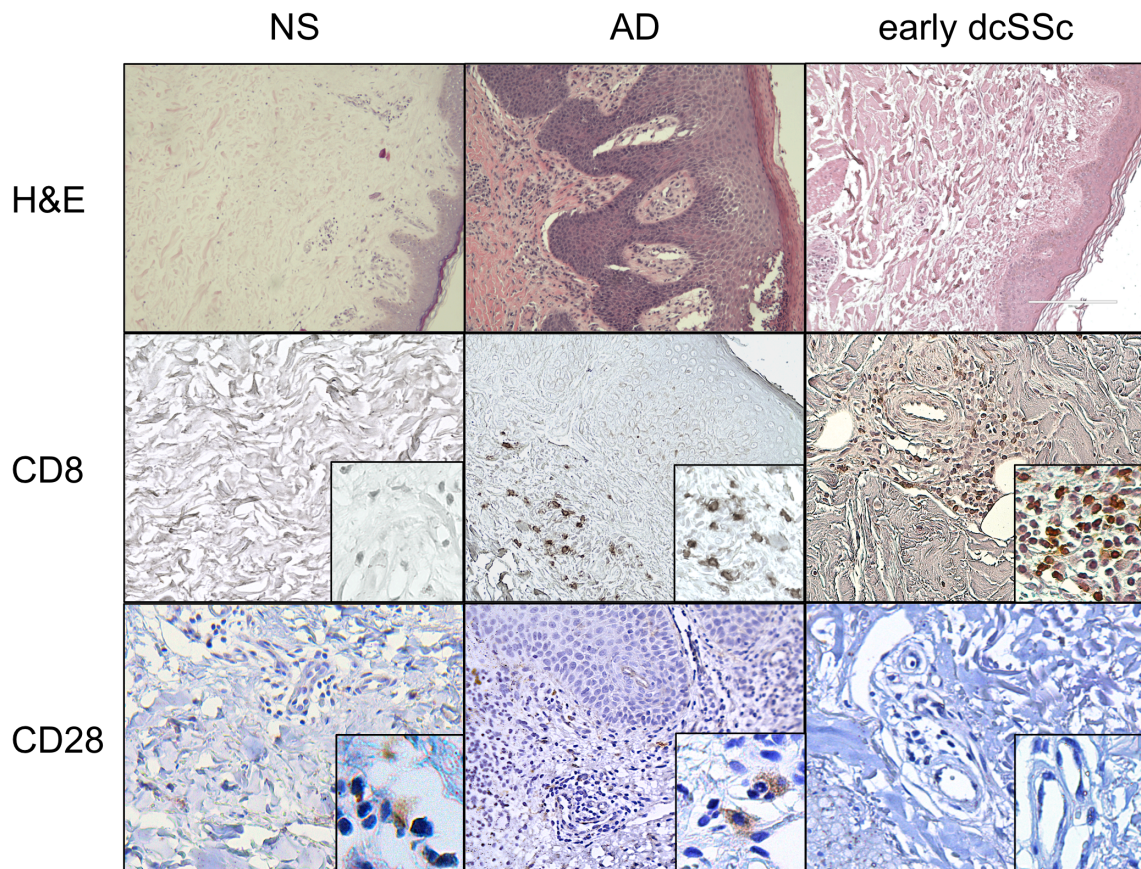


# Skin-resident effector memory CD8+CD28- T cells exhibit a pro-fibrotic phenotype in patients with systemic sclerosis

Gang Li<sup>1†</sup>, Adriana T. Larregina<sup>2, 1, 3</sup>, Robyn T. Domsic<sup>4</sup>, Donna B. Stolz<sup>5</sup>, Thomas A. Medsger Jr.<sup>4</sup>, Robert Lafyatis<sup>4</sup>, and Patrizia Fuschiotti<sup>\*4,1</sup>.

## Supplemental Data



**Figure S1. Immunohistochemical localization of CD8+CD28- T cells in early dcSSc skin biopsies.** Comparative histological analysis (H&E, 200X) and sequential staining with CD8 and CD28 antibodies, using peroxidase anti-peroxidase (brown stain, 200X; insets 400X) of skin samples from normal donors (normal skin, NS), atopic dermatitis (AD), and early dcSSc patients.