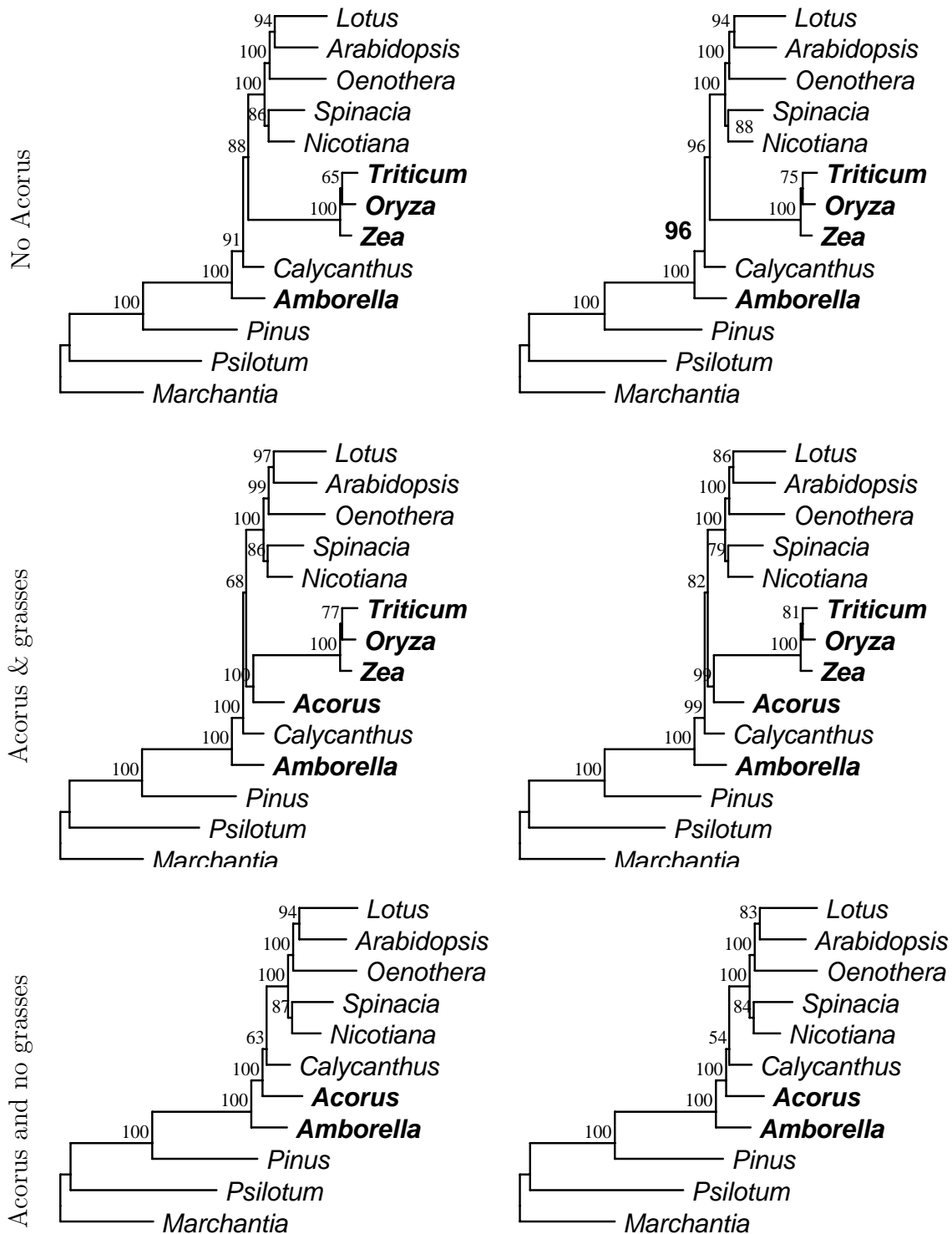


2 rate categories

4 rate categories



**Comparison of gamma distributed rates with 2 versus 4 rate categories:** This figure shows that using two rate categories gives essentially the same results as using four rate categories with this dataset. The dataset is the first- and second-position 61 gene matrix with either grasses, *Acorus*, or both used to represent monocots. The ML HKY85 model was used and parameters were estimated as described in Methods.