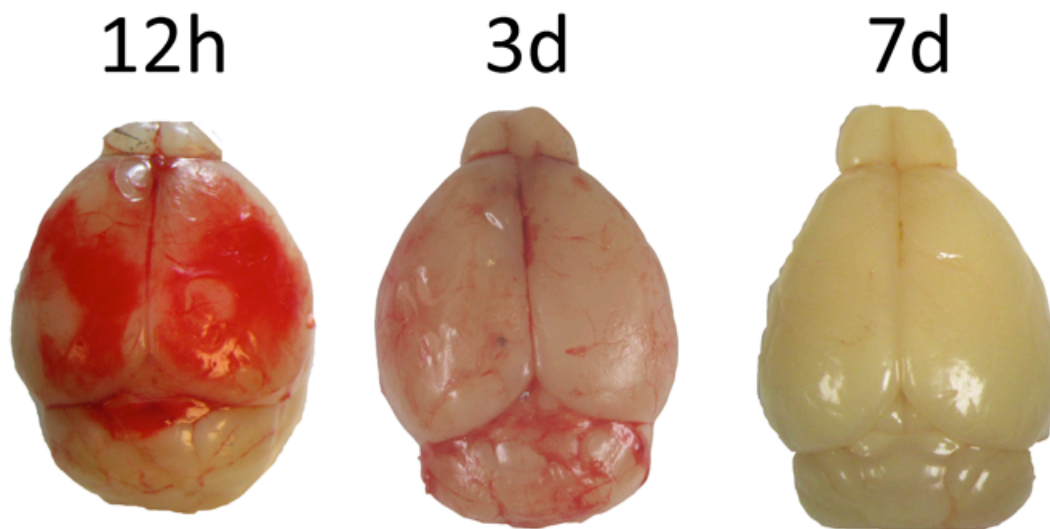


Supplemental Table 1. Systemic physiological parameters

<i>Paradigm</i>	<i>Species</i>	<i>Cistern</i>	<i>Group</i>	<i>Time</i>	<i>pH</i>	<i>pCO₂</i>	<i>pO₂</i>	<i>BP</i>	
I. Spontaneous SD	Mouse	pc	SAH	3h	7.36±0.05	40±4	109±13	83±11	
				12h	7.32±0.04	36±4	120±17	76±6	
				72h	7.34±0.02	43±2	121±14	84±3	
II. SD susceptibility	Mouse	pc	Saline	12h	7.35±0.02	39±5	134±18	98±6	
				SAH	12h	7.31±0.03	38±5	129±15	95±10
				72h	7.37±0.01	36±4	124±22	100±8	
		cm	Saline	12h	7.32±0.02	40±2	159±7	76±1	
	SAH			12h	7.31±0.02	41±2	164±15	74±2	
	Rat	cm	Saline	5d	7.46±0.04	38±5	144±9	96±4	
SAH				5d	7.46±0.04	36±4	133±18	101±11	
III. CBF during SD	Mouse	pc	Saline	12h	7.36±0.03	34±4	118±15	77±2	
				SAH	12h	7.34±0.03	32±3	118±19	74±8
				72h	7.33±0.04	30±3	131±10	72±4	
				7d	7.37±0.02	28±4	146±16	74±7	
	Rat	cm	Saline	5d	7.46±0.03	38±5	144±9	96±4	
				SAH	5d	7.46±0.04	36±4	133±18	102±12
IV. fMCAO	Mouse	pc	Saline	12h	7.34±0.04	40±4	99±13	76±11	
				SAH	12h	7.34±0.05	38±7	95±9	72±9
				72h	7.37±0.04	40±5	97±14	83±7	
				7d	7.33±0.04	39±5	92±7	76±11	
		cm	Saline	12h	7.32±0.02	41±4	146±6	73±3	
				SAH	12h	7.37±0.03	32±4	152±5	74±4
V. dMCAO	Mouse	pc	Saline	12h	7.37±0.06	34±6	158±43	74±6	
				SAH	12h	7.37±0.04	32±6	181±40	76±7
				72h	7.37±0.03	35±5	113±7	79±6	
				7d	7.35±0.02	34±2	109±13	72±4	
		cm	Saline	12h	7.36±0.05	33±4	180±8	65±6	
				SAH	12h	7.41±0.11	31±10	182±5	74±7

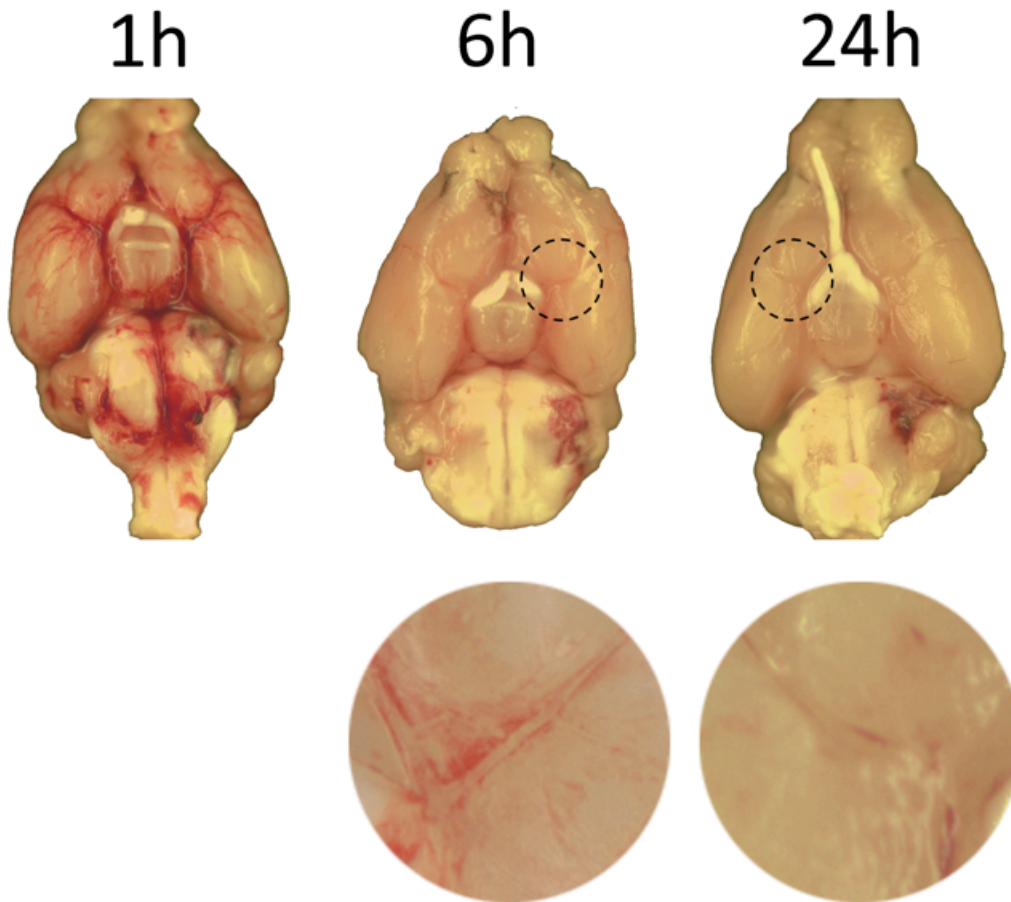
Supplemental Table 2. Electrophysiological properties of SD after SAH.

Cohort	Group	Time	SD Duration	SD Amplitude
Mouse pcSAH	Naïve	-	46±17	25±3
	Saline	12h	45±9	25±2
	SAH	12h	49±13	24±3
	SAH	72h	56±10	26±5
Mouse cmSAH	Saline	12h	37±11	20±2
	SAH	12h	64±33	22±2
Rat cmSAH	Saline	5d	24±5	24±2
	SAH	5d	28±8	22±4



Supplemental Figure 1. Gross examination of pcSAH.

Representative views after pcSAH at different time points show blood clearance over time. Brains were removed after intracardiac perfusion to clear intravascular blood, and then freshly photographed for qualitative assessment. Mice were studied at 12 hours (n=9), 72 hours (n=14) and 7 days (n=7) after pcSAH.



Supplemental Figure 2. Gross examination of cmSAH.

Representative views after cmSAH at different time points show blood clearance over time. Brains were removed after intracardiac perfusion to clear intravascular blood, and then freshly photographed for qualitative assessment. Insets show perivascular tracking of subarachnoid blood around the middle cerebral artery origin, and its clearance in cmSAH (dashed circles). Mice were studied at 1 (n=17), 6 (n=3) and 24 hours (n=3) after cmSAH.