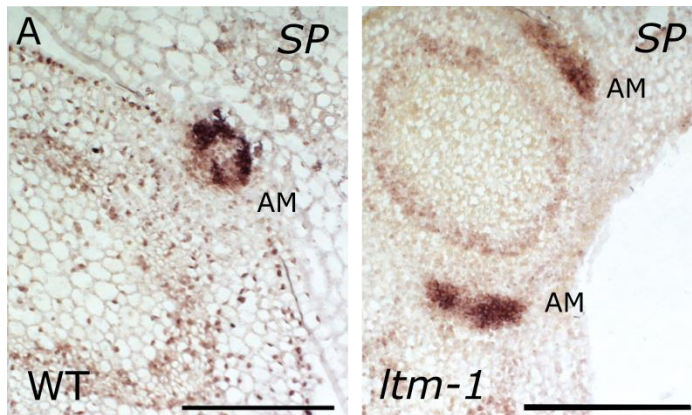


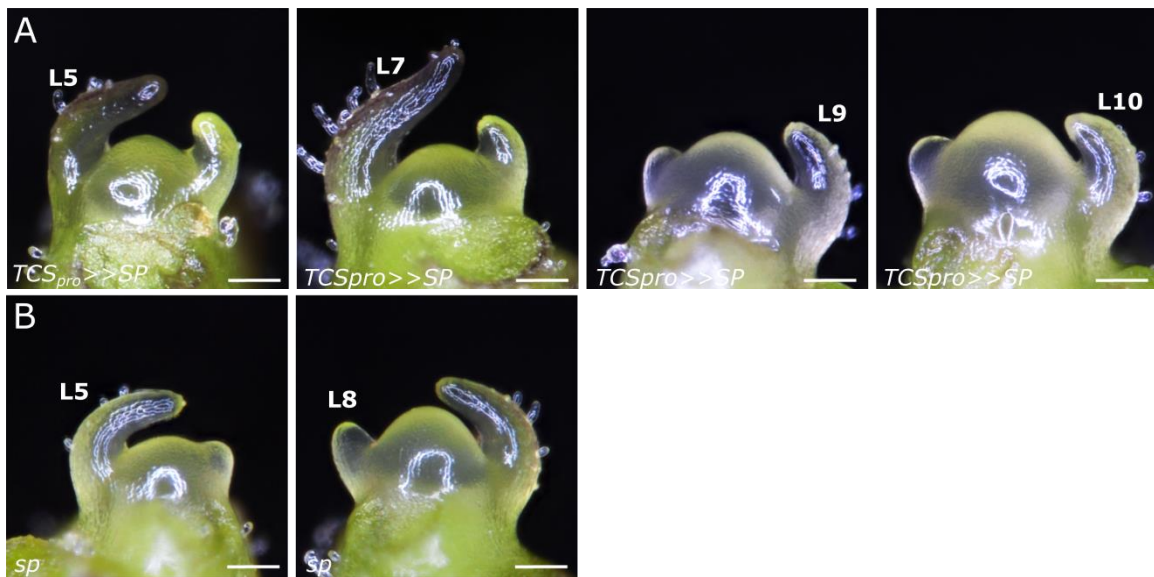
**Supplemental Figure 1. Pre-floral development of WT and *Itm* seedlings**  
(Supports Figure 1.)

A developmental series of WT (A) and *Itm-1* (B) seedlings photographed at the same stages as the PSMs shown in Figure 1.



**Supplemental Figure 2. Expression of *SP* in axillary meristems (Supports Figure 5.)**

**(A)** Distribution of *SP* RNA in young and vegetative axillary meristems of WT and *ltm-1* plants. Expression was similar in the axillary meristems of both genotypes. Scale bar = 200  $\mu$ m.



**Supplemental Figure 3. The role of SP in meristem doming (Supports Figure 6.)**

**(A)** Precocious doming in *TCS<sub>pro</sub>>>SP* vegetative PSM.

**(B)** The vegetative PSM and TM of *sp* plants.

Scale bar = 100  $\mu$ m.