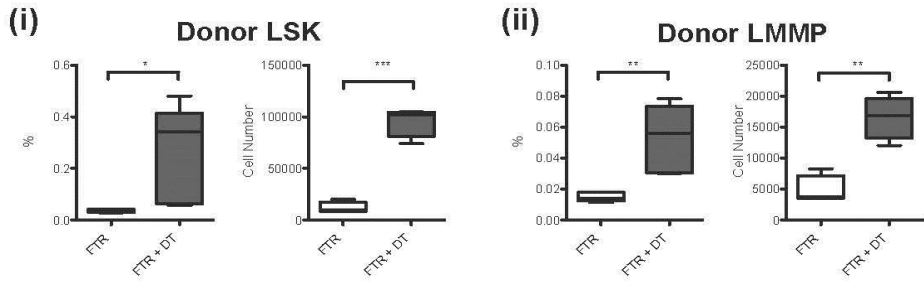
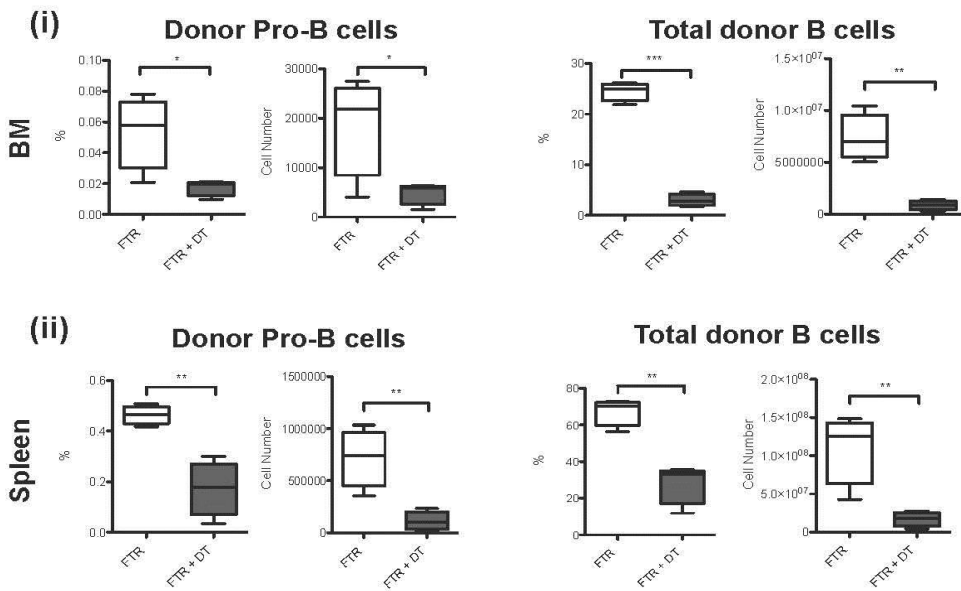
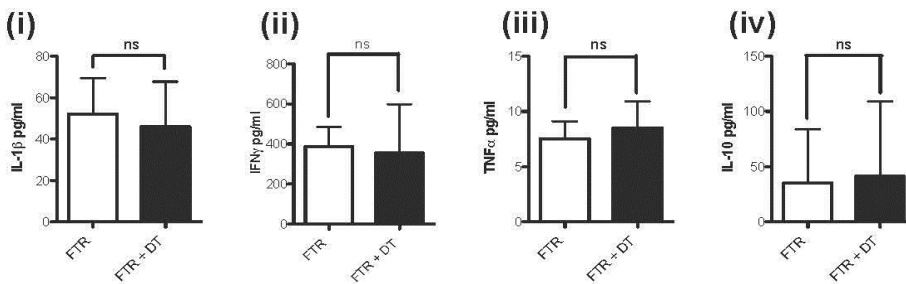
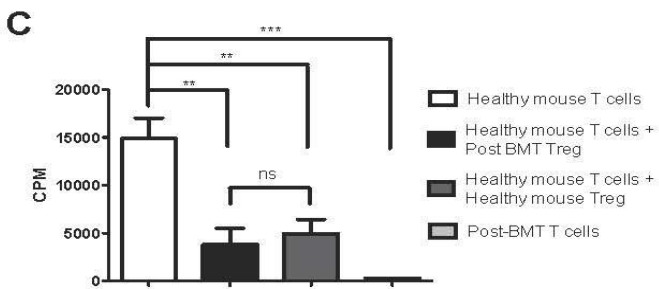
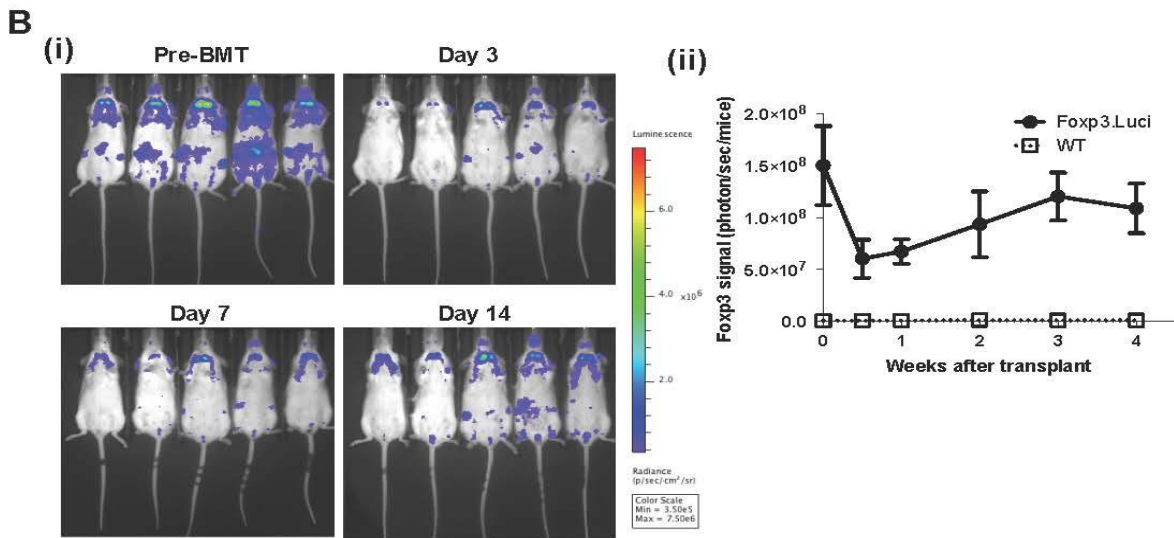
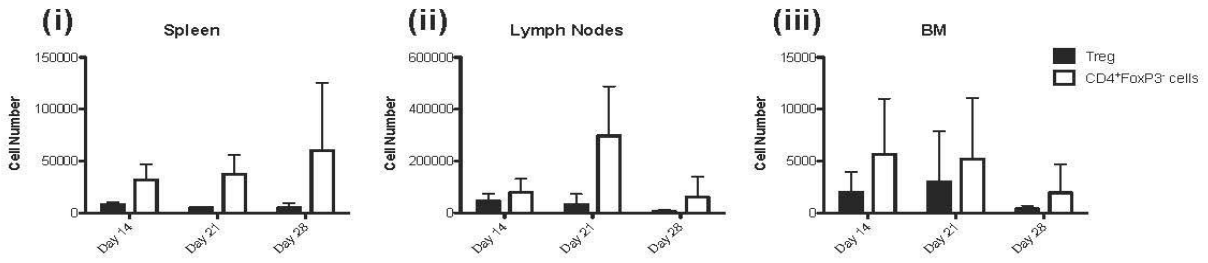


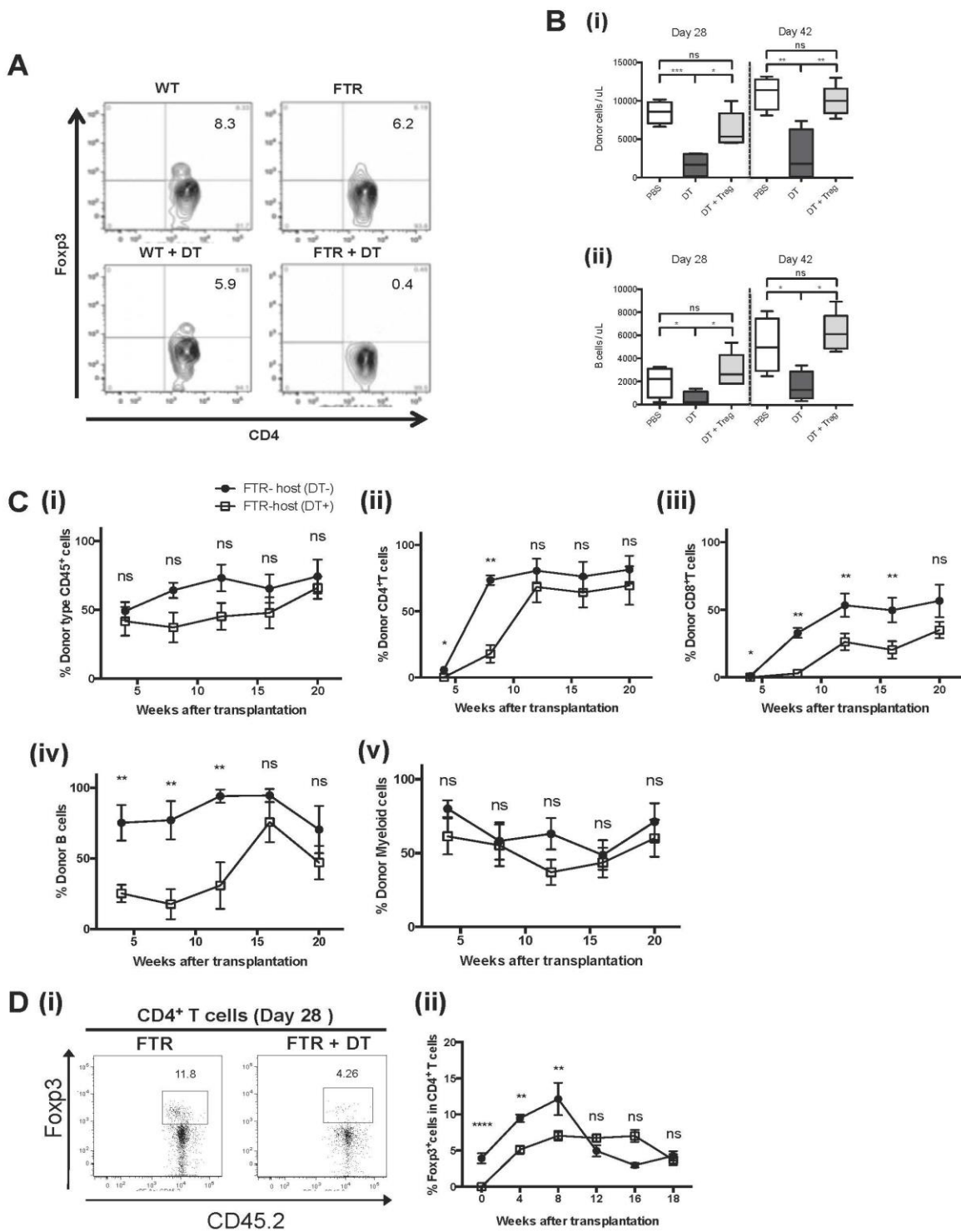
Supplementary Fig 1. Activation of self-reactive BM T cells following Treg depletion.

A**B****C**

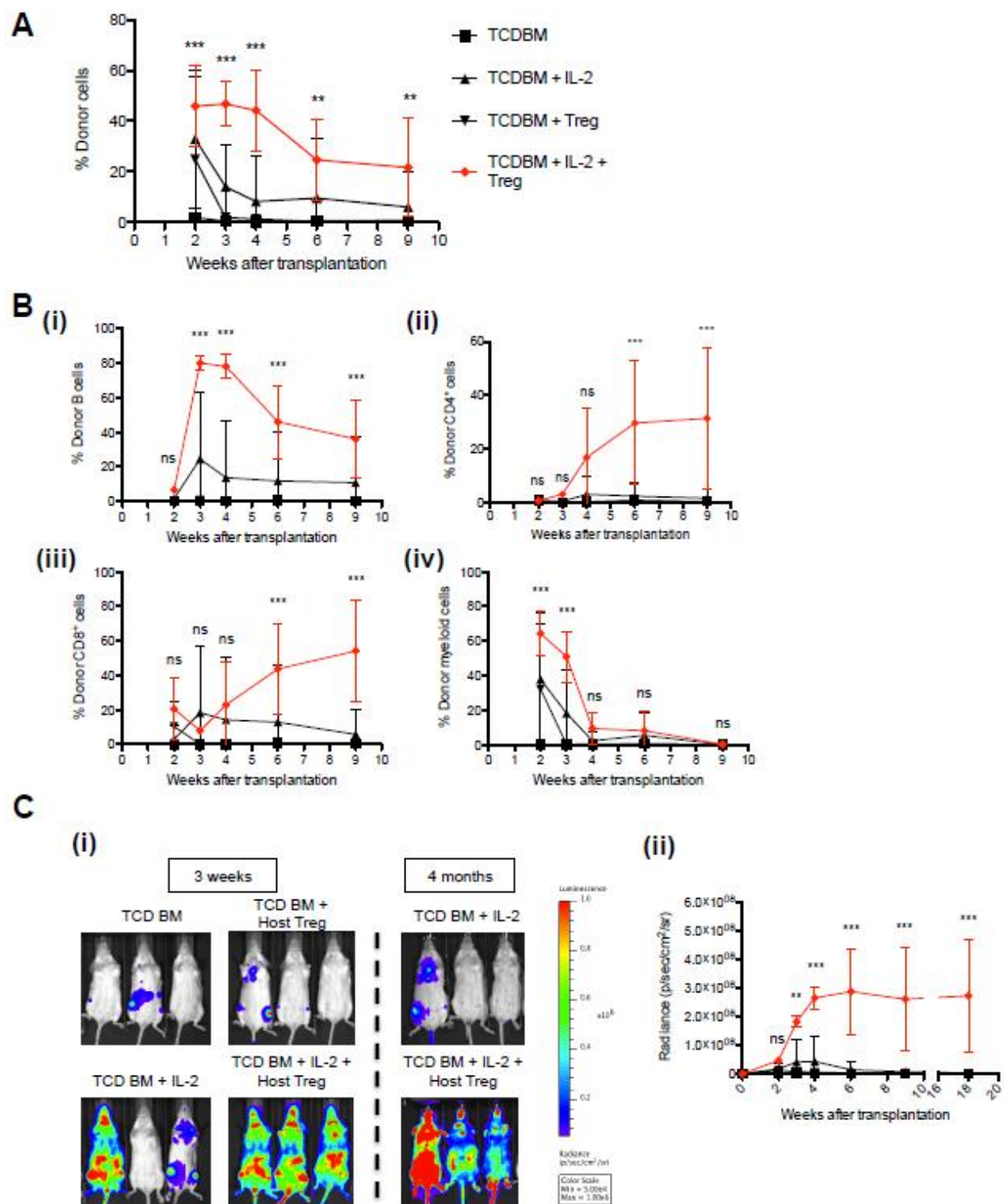
Supplementary Fig 2. Host-Treg depletion induces a block in the early phases of B cell differentiation after syngeneic transplantation



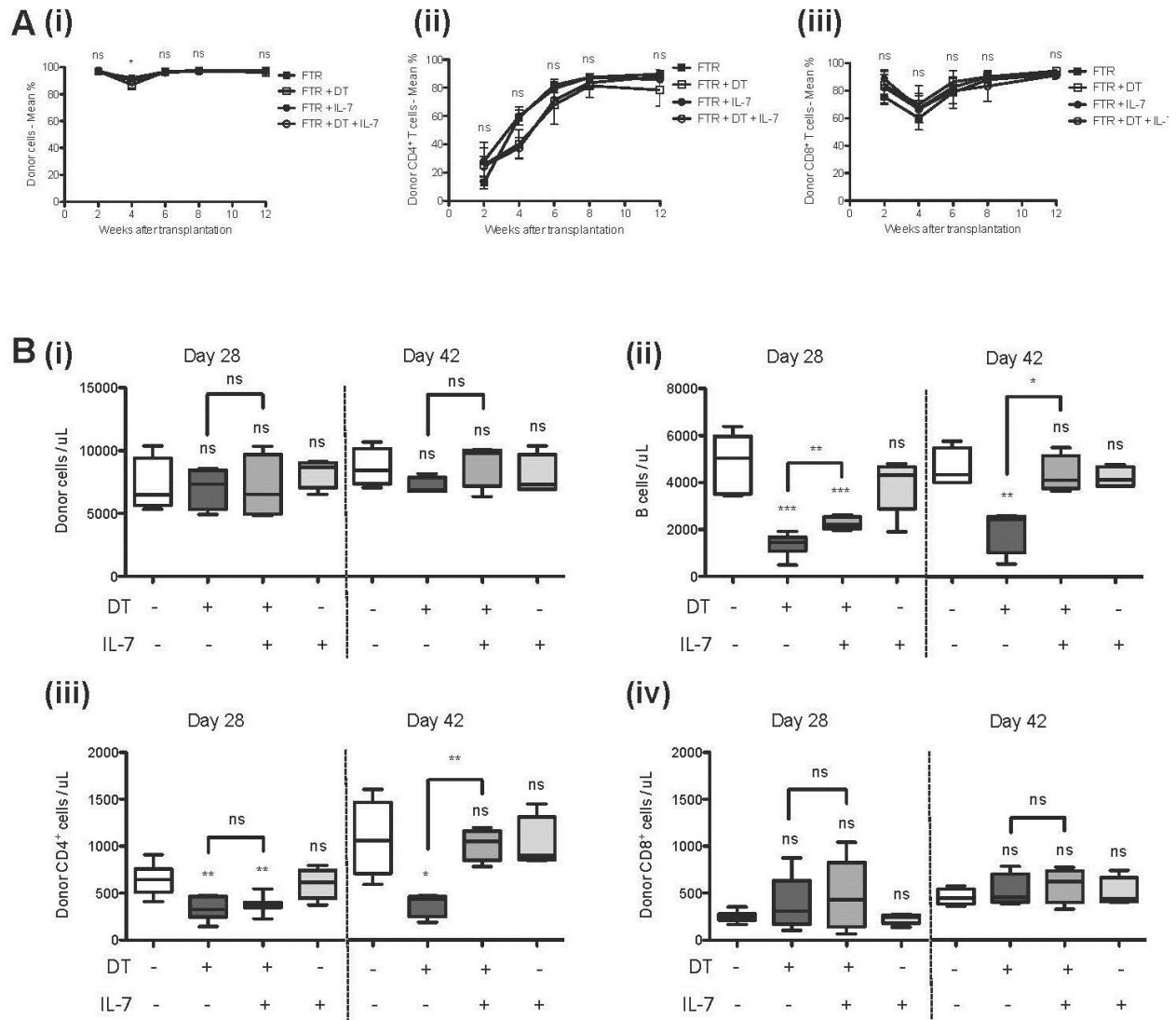
Supplementary Fig 3. Residual host derived Treg after transplantation retain suppressive function.



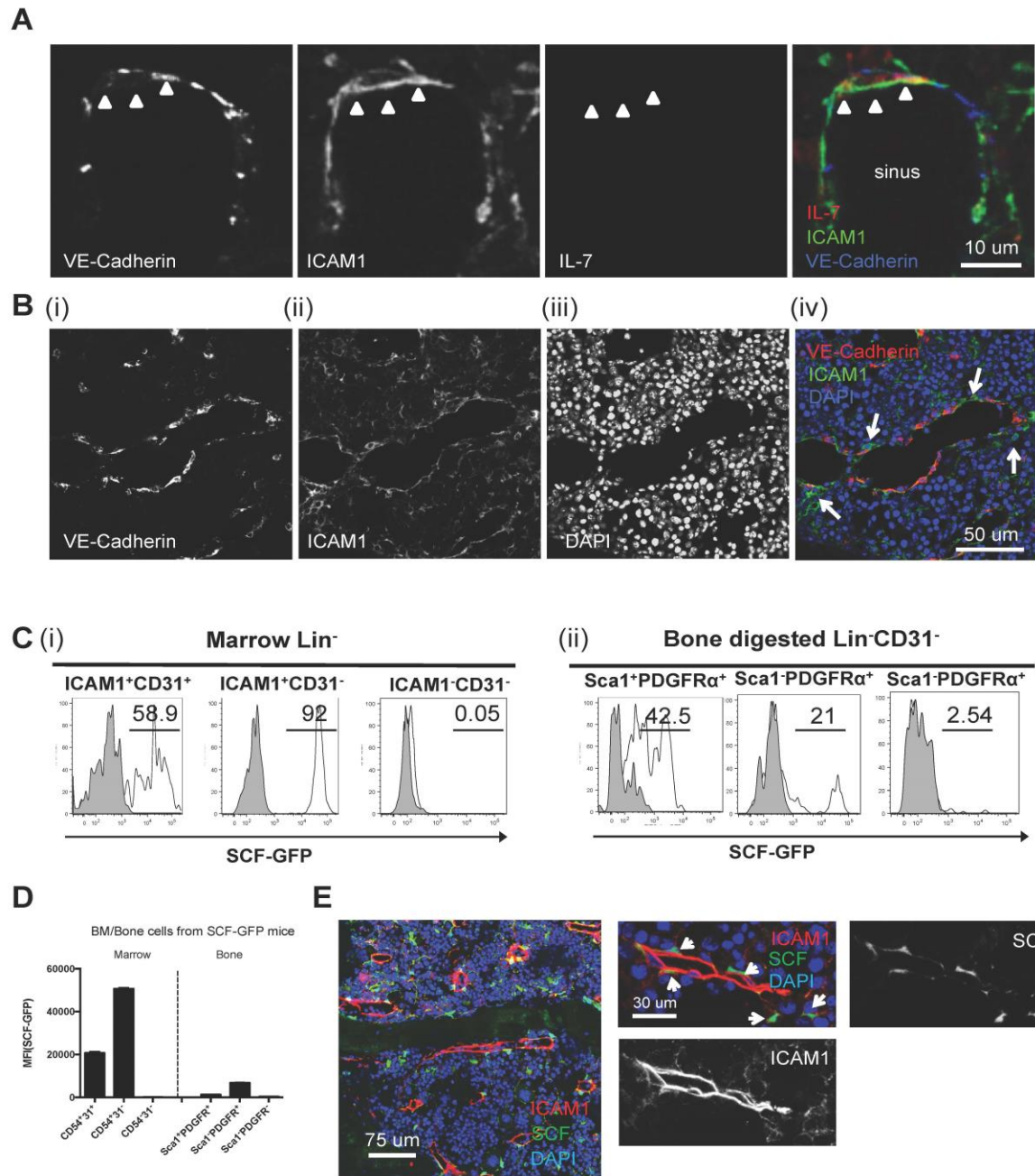
Supplementary Fig 4. Host Treg adoptive transfer rescues donor engraftment and B cell reconstitution in Treg-depleted allogeneic transplanted mice.



Supplementary Fig 5. In vivo treatment with host Treg and low doses of IL-2 promotes donor engraftment and donor lymphoid reconstitution in sublethally irradiated transplanted immune competent mice



Supplementary Fig 6. IL-7 treatment rescues donor B cell reconstitution without impacting other lymphoid cell lineages in syngeneic transplanted Treg-depleted mice



Supplementary Fig 7. Non endothelial ICAM1⁺ cells are perivascular stromal cells and the majority of ICAM1⁺CD31⁻CD45⁻TER119⁻ non hematopoietic cells in BM are SCF-secreting niche cells.