

**SUPPLEMENTAL MATERIAL**

**Prediction of Stroke Subtype and Recanalization Using  
Susceptibility Vessel Sign on Susceptibility Weighted MRI**

**Dong-Wan Kang, MD\*;** **Han-Gil Jeong, MD, MSc\*;** **Do Yeon Kim, MD;** **Wook-Jin  
Yang, MD;** **Seung-Hoon Lee, MD, PhD, FAHA**

Department of Neurology, Seoul National University Hospital, Seoul, Korea

\* These authors contributed equally to this work.

Corresponding author:

Pf. Seung-Hoon Lee, MD, PhD, FAHA

Department of Neurology, Seoul National University Hospital

101 Daehak-ro, Jongro-gu, Seoul, 03080, Republic of Korea

Tel.: +82-2-2072-1014

Fax: +82-2-3672-7553

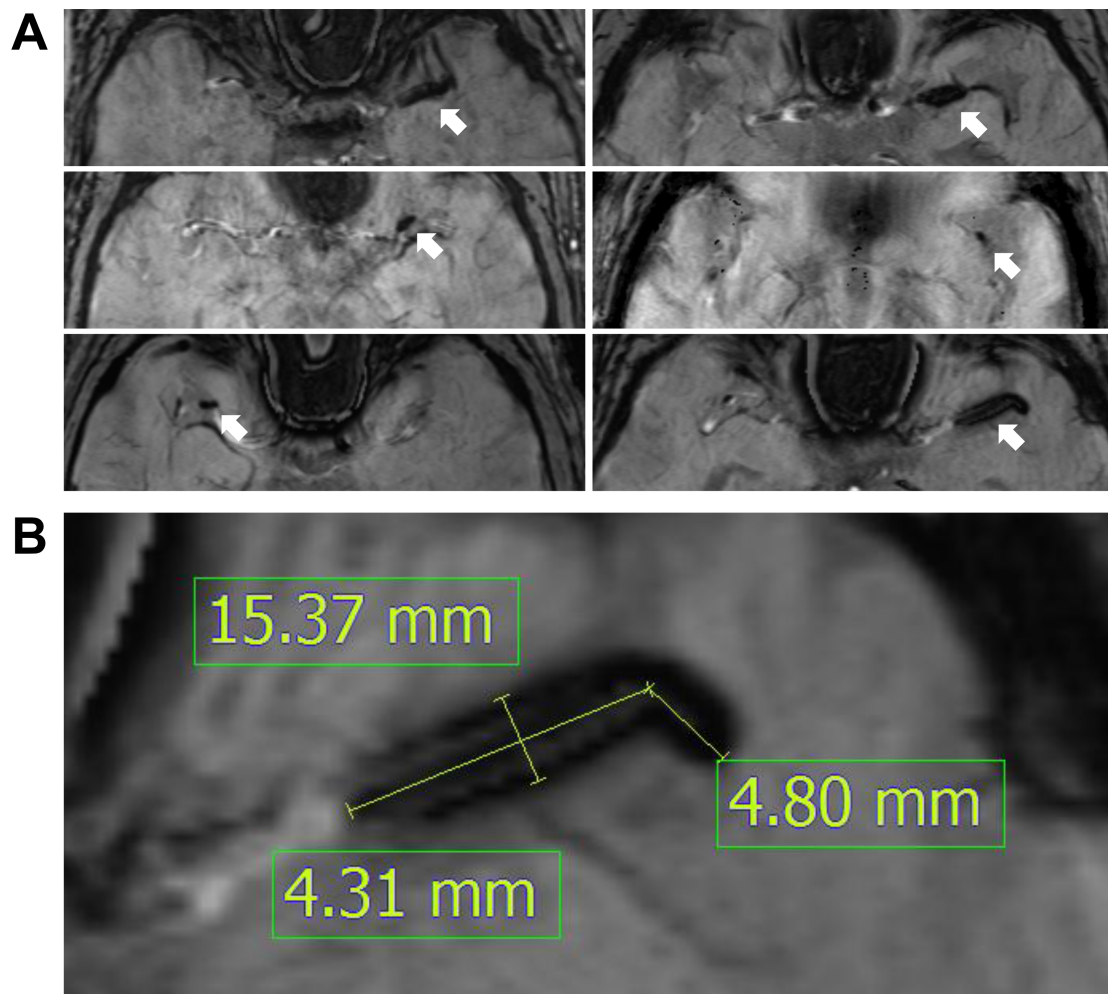
E-mail: [sb0516@snu.ac.kr](mailto:sb0516@snu.ac.kr)

**Supplemental Table I** - Clinical and imaging characteristics according to different MR scanners.

Variables	MR machine			<i>P</i> value
	Verio 3T SWI (n = 60)	Discovery 3T SWAN (n = 14)	Signa 1.5T SWAN (n = 15)	
<b>Demographics</b>				
Age	69 ± 12	64 ± 17	72 ± 14	0.24
Females	29 (48%)	3 (21%)	10 (67%)	0.05
<b>Risk factors</b>				
Hypertension	36 (60%)	5 (36%)	13 (87%)	0.02
Diabetes	19 (32%)	5 (36%)	6 (40%)	0.82
Hyperlipidemia	17 (28%)	6 (43%)	5 (33%)	0.57
Atrial fibrillation	29 (48%)	6 (43%)	12 (80%)	0.06
Ever smoking	17 (28%)	5 (26%)	1 (7%)	0.15
Previous stroke or TIA	14 (23%)	7 (50%)	3 (20%)	0.28
<b>SVS parameters</b>				
SVS presence	47 (78%)	9 (64%)	13 (87%)	0.34
SVS diameter (mm)	3.9 ± 2.5	3.7 ± 3.3	4.2 ± 4.2	0.23
SVS length (mm)	10.1 ± 8.1	7.6 ± 6.9	10.0 ± 8.1	0.94
SVS volume (mm <sup>3</sup> )	239.5 ± 265.0	244.9 ± 309.7	218.8 ± 265.1	0.96
<b>Site of Occlusion</b>				
ICA-T	12 (20%)	4 (29%)	2 (13%)	0.63
MCA M1	38 (63%)	6 (43%)	10 (67%)	
MCA M2 or ACA	10 (17%)	4 (67%)	3 (20%)	
<b>Stroke Subtype</b>				
Cardioembolism	37 (62%)	7 (50%)	13 (87%)	0.51
Large artery atherosclerosis	17 (28%)	5 (36%)	2 (13%)	
Other determined	4 (7%)	1 (7%)	0 (0%)	
Undetermined	2 (3%)	1 (7%)	0 (0%)	
Recanalization	47 (78.3%)	12 (85.7%)	11 (73.3%)	0.72
Admission NIHSS	15.5 [9.25, 19]	13 [7.75, 16.25]	15 [11, 18]	0.34
Stent-retriever use	45 (75%)	10 (71%)	14 (93%)	0.26
IV rt-PA- yes	26 (43%)	5 (36%)	4 (27%)	0.48
IV rt-PA to MRI (min)	46 ± 24	49 ± 6	24 ± 25	0.31
Symptom onset to puncture (h)	5.6 ± 2.7	5.7 ± 4.7	7.0 ± 3.7	0.36
Puncture to recanalization (min)	40 ± 33	42 ± 30	34 ± 35	0.74

**Supplemental Figure I** – Variable size of SVSs and their measurement on SWMRI.

**A.** Variable size of SVSs were shown on SWMRI. **B.** The SVS length between the proximal and distal parts of the SVS was measured. The SVS diameter was obtained by measuring the largest transverse distance perpendicular to the SVS length.



**Supplemental Figure II** – Distribution of the SVS diameter and length (n = 89) in this study.

