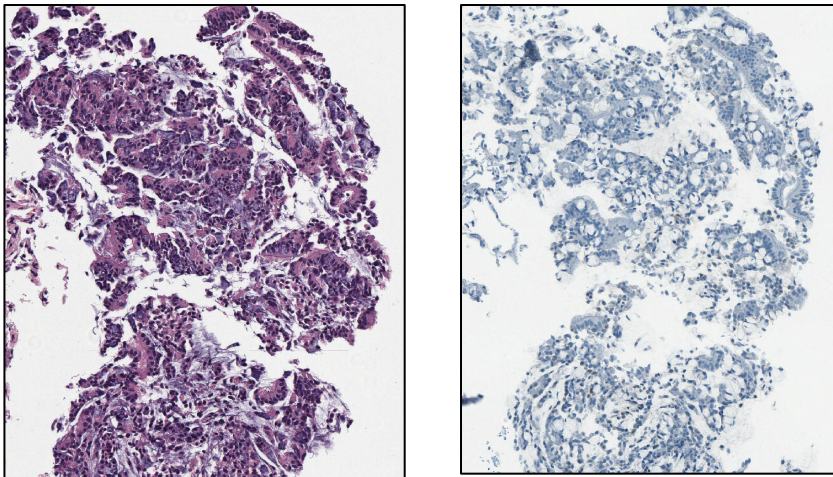
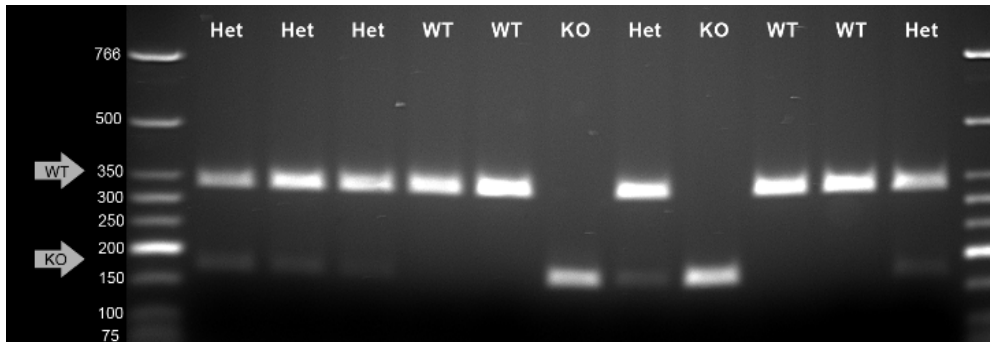


Supplemental Figure 1. Tissue samples of human bone metastases were harvested by LCM from areas of tumors negative (top) or positive (middle) for AR as well as normal stromal tissue (bottom). Areas positive for AR show interconnected meshwork of stroma and non cancerous cells displaying a negative staining.



Supplemental Figure 2. Specimen from a lung metastasis biopsy in a patient with advanced prostate adenocarcinoma, stained with Hematoxylin-Eosin (left) and for AR (right). The entire tumor tissue appears to lack AR expression, as is commonly observed in visceral metastases in this type of patients.



Supplemental Figure 3. Representative gel image of IL-1R mouse genotyping by polymerase chain reaction. Multiplex PCR was performed as described in methods; product was then subjected to electrophoresis on a 2% Agarose-TBE gel, stained with ethidium bromide, and imaged with 302 nm transillumination. Wild-Type (WT) allele produces a 350 base pair (bp) product, while the knockout (KO) allele results in a 172 bp amplicon. Presence of both alleles in a single individual indicates heterozygous (Het) genotype.

SAMPLE	SYNAPTOPHYSIN	CHROMOGRANIN A
MOUSE NEURONAL CULTURE	POSITIVE	POSITIVE
BONE MET #1 [AR +]	NEGATIVE	NEGATIVE
BONE MET #2 [AR+]	NEGATIVE	NEGATIVE
BONE MET #1 [AR -]	NEGATIVE	NEGATIVE
BONE MET #1 [AR -]	NEGATIVE	NEGATIVE
LUNG [AR -]	POSITIVE	POSITIVE

Supplemental Table 1. Results of qRT-PCR for neuroendocrine markers synaptophysin and chromogranin A in human tissues isolated by LCM, indicating that none of the bone metastases surveyed exhibit a neuroendocrine phenotype, while the visceral metastasis proved positive for both markers; cultured mouse neurons were included as a positive control.

Species	Protein	Gene Symbol	TaqMan Assay ID
Human	Prostein	<i>SLC45A3</i>	Hs00263832
Human	Androgen Receptor	<i>AR</i>	Hs04272737
Human	Interleukin-1 β	<i>IL1B</i>	Hs01555410_m1
Human	PDGFR α	<i>PDGFRA</i>	Hs00998028_m1
Human	GAPDH	<i>GAPDH</i>	Hs99999905_m1
Human	Synaptophysin	<i>SYP</i>	Hs00300531_m1
Human	Chromogranin A	<i>CHGA</i>	Hs00900370_m1
Mouse	GAPDH	<i>Gapdh</i>	Mm99999915_g1
Mouse	S100A4	<i>s100a4</i>	Mm00803371_m1
Mouse	COX-2	<i>Ptgs2</i>	Mm00478374_m1

Supplemental Table 2. Primer-probe sets used for qRT-PCR analysis in the present study.