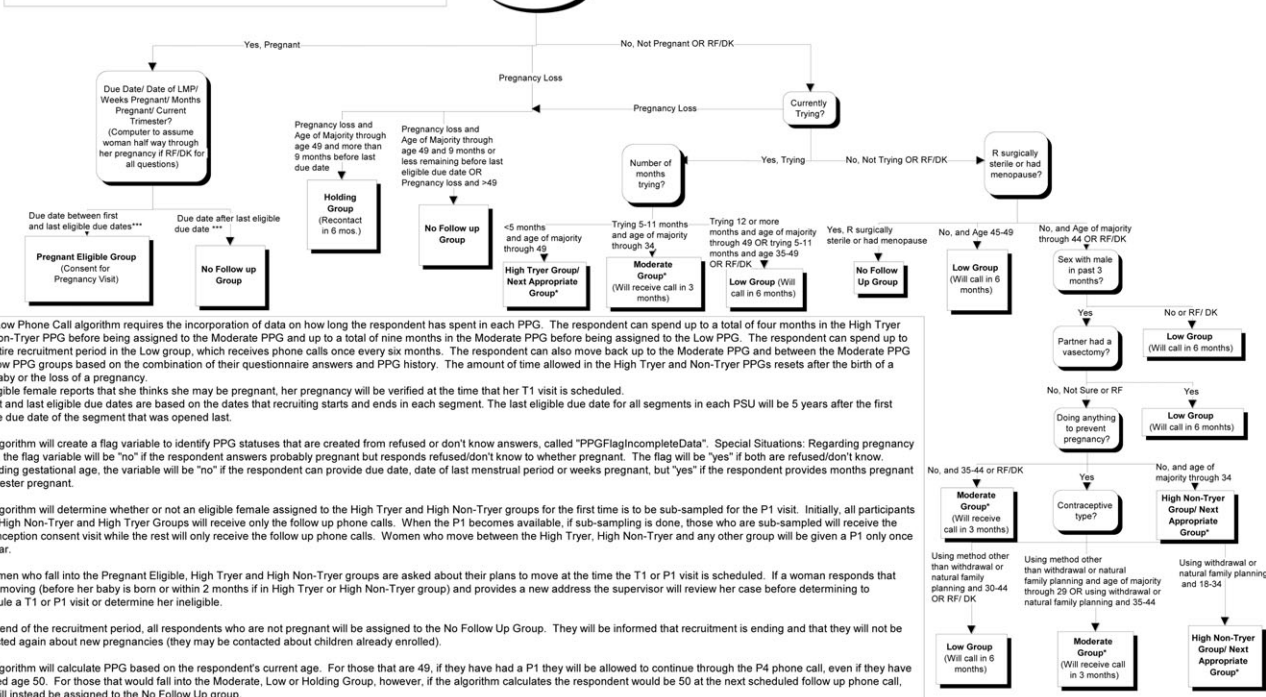


Introduction for All Calls
 It's been about six months since someone from the National Children's Study has spoken with you and I'm calling to update some information we have for you. A lot can change in six months, so I may ask you questions that we've previously asked. The National Children's Study is enrolling women of childbearing age to get information about pregnancy. Because we are interested in pregnancy, it is important for us to know if you are currently pregnant.



Supplementary Figure S4 Initial pregnancy screening algorithm and follow-up algorithms for the National Children's Study Vanguard Centers. Low probability call. Follow-up algorithm for low PPG participants. From May to December 2009, low PPG participants were contacted at 6 months after initial or interval screening, and PPG was reassessed using this algorithm. If the determination was that a participant's PPG had changed, then the next follow-up utilized the algorithm for the new PPG. After December 2009, low PPG participants were recontacted at 3-month intervals. Abbreviations: T1, first trimester study visit; P1, 1-month follow-up call; P2, 2-month follow-up call; P4, 4-month follow-up call; RF, refused; DK, do not know.