

*Data dictionary***S4 File Data repository - Knowledge**

<b>Data Set Name</b>	WORK.KNOW	<b>Observations</b>	1857
<b>Member Type</b>	DATA	<b>Variables</b>	54
<b>Engine</b>	V9	<b>Indexes</b>	0
<b>Created</b>	08/15/2014 10:53:47	<b>Observation Length</b>	432
<b>Last Modified</b>	08/15/2014 10:53:47	<b>Deleted Observations</b>	0
<b>Protection</b>		<b>Compressed</b>	NO
<b>Data Set Type</b>		<b>Sorted</b>	NO
<b>Label</b>			
<b>Data Representation</b>	WINDOWS_64		
<b>Encoding</b>	wlatin1 Western (Windows)		

**Alphabetic List of Variables and Attributes**

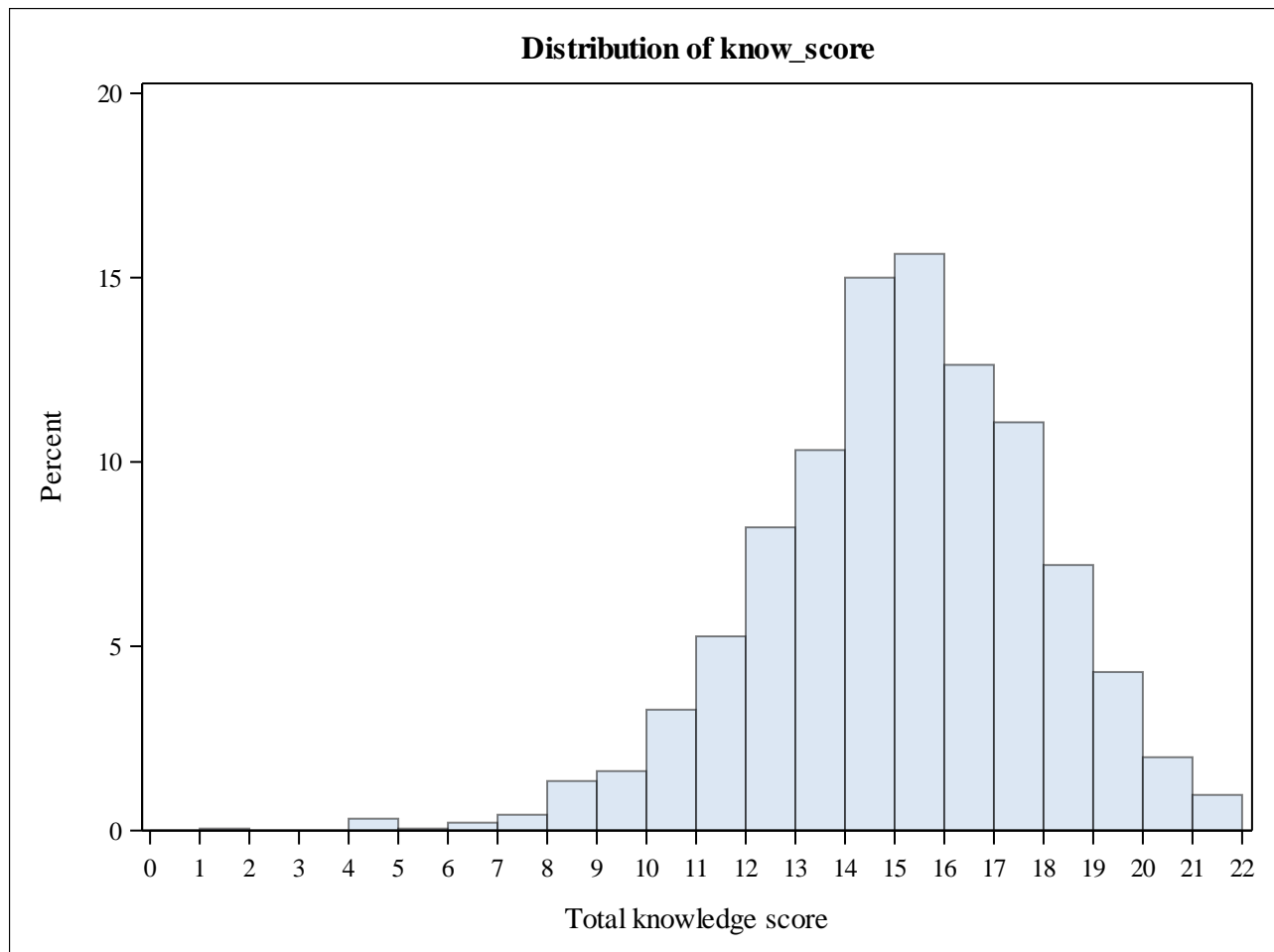
#	Variable	Type	Len	Format	Informat	Label
4	date	Num	8	MMDDYY10.		Date of submission
1	dim_user_id	Num	8	BEST12.	BEST32.	dim_user_idect ID
2	event	Num	8	LESSONTYPEID.		Time
3	group	Num	8	GRP.		Study group
23	know_q4	Num	8	KNOWQ4F.		Under recently enacted Pennsylvania law, for an act (or failure to act) to count as abuse/neglect, which of the following must be true?
24	know_q5	Num	8	KNOWQ5F.		Under Pennsylvania law, you can be held legally liable if you suspect child abuse/neglect and report it, but it turns out to be unfounded.
25	know_q6	Num	8	KNOWQ6F.		Under Pennsylvania law, once you have reasonable cause to suspect child abuse/neglect, you must report your suspicion to authorities:
26	know_q7	Num	8	KNOWQ7F.		Under Pennsylvania law, you must report:
27	know_q8	Num	8	KNOWQ8F.		According to newly enacted Pennsylvania law, you are required to report suspected child abuse/neglect to:
28	know_q9	Num	8	KNOWQ9F.		To count as physical child abuse, it must result in a child experiencing:
21	know_q10	Num	8	YN.		Under Pennsylvania law, are you required to report suspected child abuse/neglect if a child was put at significant risk for being injured even when no injury or harm actually occurred?
29	know_q11	Num	8	KNOWQ11F.		Requirements for reporting suspected child abuse/neglect refer to recent events. How long ago counts as recent under Pennsylvania law?
22	know_q12	Num	8	YN.		Do you feel confident in your ability to identify signs of child abuse/neglect?
30	know_q13	Num	8	KNOWQ13F.		How prepared do you feel to report child abuse/neglect should the need arise?
52	know_q10_correct	Num	8	YN.		Knowledge Question 10 correct
53	know_q11_correct	Num	8	YN.		Knowledge Question 11 correct

*Data dictionary*

<b>Alphabetic List of Variables and Attributes</b>						
<b>#</b>	<b>Variable</b>	<b>Type</b>	<b>Len</b>	<b>Format</b>	<b>Informat</b>	<b>Label</b>
6	know_q1a	Num	8	YN.		Physically restrain a child by locking them in a closet
31	know_q1a_correct	Num	8	YN.		Knowledge Question 1a correct
7	know_q1b	Num	8	YN.		Place duct tape over a child's mouth as a form of punishment
32	know_q1b_correct	Num	8	YN.		Knowledge Question 1b correct
8	know_q1c	Num	8	YN.		Cause any kind of physical injury
33	know_q1c_correct	Num	8	YN.		Knowledge Question 1c correct
9	know_q1d	Num	8	YN.		Cause substantial pain from disciplining a child
34	know_q1d_correct	Num	8	YN.		Knowledge Question 1d correct
10	know_q1e	Num	8	YN.		Impair physical functioning from disciplining a child
35	know_q1e_correct	Num	8	YN.		Knowledge Question 1e correct
11	know_q1f	Num	8	YN.		Forcefully slap a child under one year of age
36	know_q1f_correct	Num	8	YN.		Knowledge Question 1f correct
12	know_q1g	Num	8	YN.		Expose a child to domestic violence
37	know_q1g_correct	Num	8	YN.		Knowledge Question 1g correct
13	know_q2a	Num	8	YN.		Any bruising in an infant who hasn't started pulling to stand
38	know_q2a_correct	Num	8	YN.		Knowledge Question 2a correct
14	know_q2b	Num	8	YN.		Any bruising in a child younger than 5 years old
39	know_q2b_correct	Num	8	YN.		Knowledge Question 2b correct
15	know_q2c	Num	8	YN.		Any bruising from spanking
40	know_q2c_correct	Num	8	YN.		Knowledge Question 2c correct
16	know_q2d	Num	8	YN.		Bruising on toddler's shins
41	know_q2d_correct	Num	8	YN.		Knowledge Question 2d correct
17	know_q2e	Num	8	YN.		Bruising on toddler's ears
42	know_q2e_correct	Num	8	YN.		Knowledge Question 2e correct
18	know_q3a	Num	8	YN.		Financial penalty
43	know_q3a_correct	Num	8	YN.		Knowledge Question 3a correct
19	know_q3b	Num	8	YN.		Loss of professional license
44	know_q3b_correct	Num	8	YN.		Knowledge Question 3b correct
20	know_q3c	Num	8	YN.		Incarceration
45	know_q3c_correct	Num	8	YN.		Knowledge Question 3c correct
46	know_q4_correct	Num	8	YN.		Knowledge Question 4 correct
47	know_q5_correct	Num	8	YN.		Knowledge Question 5 correct
48	know_q6_correct	Num	8	YN.		Knowledge Question 6 correct
49	know_q7_correct	Num	8	YN.		Knowledge Question 7 correct

*Data dictionary***Alphabetic List of Variables and Attributes**

#	Variable	Type	Len	Format	Informat	Label
50	know_q8_correct	Num	8	YN.		Knowledge Question 8 correct
51	know_q9_correct	Num	8	YN.		Knowledge Question 9 correct
54	know_score	Num	8			Total knowledge score
5	time	Num	8	TIME.		Time of submission



Analysis Variable : know_score Total knowledge score							
N	N Miss	Mean	Std Dev	Median	Quartile Range	Minimum	Maximum
1856	1	14.62	2.80	15.00	4.00	1.00	21.00

Analysis Variable : know_score Total knowledge score										
Study group	Time	N Obs	N	N Miss	Mean	Std Dev	Median	Quartile Range	Minimum	Maximum
Control	Pre-survey	371	371	0	13.53	2.66	14.00	3.00	4.00	21.00
	Post-survey	365	365	0	16.30	2.09	16.00	3.00	9.00	21.00
	Re-test	371	371	0	13.59	2.64	14.00	3.00	1.00	21.00
Experimental	Pre-survey	377	376	1	13.52	2.60	14.00	3.00	4.00	21.00
	Post-survey	373	373	0	16.20	2.29	16.00	3.00	4.00	21.00

<b>Total knowledge score</b>				
<b>know_score</b>	<b>Frequency</b>	<b>Percent</b>	<b>Cumulative Frequency</b>	<b>Cumulative Percent</b>
<b>1</b>	1	0.05	1	0.05
<b>4</b>	6	0.32	7	0.38
<b>5</b>	1	0.05	8	0.43
<b>6</b>	4	0.22	12	0.65
<b>7</b>	8	0.43	20	1.08
<b>8</b>	25	1.35	45	2.42
<b>9</b>	30	1.62	75	4.04
<b>10</b>	61	3.29	136	7.33
<b>11</b>	98	5.28	234	12.61
<b>12</b>	153	8.24	387	20.85
<b>13</b>	192	10.34	579	31.20
<b>14</b>	278	14.98	857	46.17
<b>15</b>	290	15.63	1147	61.80
<b>16</b>	234	12.61	1381	74.41
<b>17</b>	206	11.10	1587	85.51
<b>18</b>	134	7.22	1721	92.73
<b>19</b>	80	4.31	1801	97.04
<b>20</b>	37	1.99	1838	99.03
<b>21</b>	18	0.97	1856	100.00
<b>Frequency Missing = 1</b>				

<b>Physically restrain a child by locking them in a closet</b>				
<b>know_q1a</b>	<b>Frequency</b>	<b>Percent</b>	<b>Cumulative Frequency</b>	<b>Cumulative Percent</b>
<b>no</b>	33	1.78	33	1.78
<b>YES</b>	1786	96.18	1819	97.95
<b>Unsure</b>	38	2.05	1857	100.00

<b>Table 1 of know_q1a by event</b>				
<b>Controlling for group=Control</b>				
<b>know_q1a(Physically restrain a child by locking them in a closet)</b>	<b>event(Time)</b>			
<b>Frequency Percent Row Pct Col Pct</b>	<b>Pre-survey</b>	<b>Post-survey</b>	<b>Re-test</b>	<b>Total</b>
<b>no</b>	11 0.99 57.89 2.96	1 0.09 5.26 0.27	7 0.63 36.84 1.89	19 1.72
<b>YES</b>	349 31.53 32.83 94.07	363 32.79 34.15 99.45	351 31.71 33.02 94.61	1063 96.03
<b>Unsure</b>	11 0.99 44.00 2.96	1 0.09 4.00 0.27	13 1.17 52.00 3.50	25 2.26
<b>Total</b>	371 33.51	365 32.97	371 33.51	1107 100.00

<b>Table 2 of know_q1a by event</b>				
<b>Controlling for group=Experimental</b>				
<b>know_q1a(Physically restrain a child by locking them in a closet)</b>	<b>event(Time)</b>			
<b>Frequency Percent Row Pct Col Pct</b>	<b>Pre-survey</b>	<b>Post-survey</b>	<b>Re-test</b>	<b>Total</b>
<b>no</b>	8 1.07 57.14 2.12	6 0.80 42.86 1.61	0 0.00 0.00 .	14 1.87
<b>YES</b>	357 47.60 49.38 94.69	366 48.80 50.62 98.12	0 0.00 0.00 .	723 96.40
<b>Unsure</b>	12 1.60 92.31 3.18	1 0.13 7.69 0.27	0 0.00 0.00 .	13 1.73
<b>Total</b>	377 50.27	373 49.73	0 0.00	750 100.00

Knowledge Question 1a correct				
know_q1a_correct	Frequency	Percent	Cumulative Frequency	Cumulative Percent
no	71	3.82	71	3.82
YES	1786	96.18	1857	100.00

Table 1 of know_q1a_correct by event				
Controlling for group=Control				
know_q1a_correct(Knowledge Question 1a correct)	event(Time)			
Frequency Percent Row Pct Col Pct	Pre-survey	Post-survey	Re-test	Total
no	22 1.99 50.00 5.93	2 0.18 4.55 0.55	20 1.81 45.45 5.39	44 3.97
YES	349 31.53 32.83 94.07	363 32.79 34.15 99.45	351 31.71 33.02 94.61	1063 96.03
Total	371 33.51	365 32.97	371 33.51	1107 100.00

Table 2 of know_q1a_correct by event				
Controlling for group=Experimental				
know_q1a_correct(Knowledge Question 1a correct)	event(Time)			
Frequency Percent Row Pct Col Pct	Pre-survey	Post-survey	Re-test	Total
no	20 2.67 74.07 5.31	7 0.93 25.93 1.88	0 0.00 0.00 .	27 3.60
YES	357 47.60 49.38 94.69	366 48.80 50.62 98.12	0 0.00 0.00 .	723 96.40
Total	377 50.27	373 49.73	0 0.00	750 100.00



<b>Place duct tape over a child's mouth as a form of punishment</b>				
<b>know_q1b</b>	<b>Frequency</b>	<b>Percent</b>	<b>Cumulative Frequency</b>	<b>Cumulative Percent</b>
<b>no</b>	38	2.05	38	2.05
<b>YES</b>	1771	95.37	1809	97.42
<b>Unsure</b>	48	2.58	1857	100.00

<b>Table 1 of know_q1b by event</b>				
<b>Controlling for group=Control</b>				
<b>know_q1b(Place duct tape over a child's mouth as a form of punishment)</b>	<b>event(Time)</b>			
<b>Frequency Percent Row Pct Col Pct</b>	<b>Pre-survey</b>	<b>Post-survey</b>	<b>Re-test</b>	<b>Total</b>
<b>no</b>	11 0.99 55.00 2.96	4 0.36 20.00 1.10	5 0.45 25.00 1.35	20 1.81
<b>YES</b>	346 31.26 32.83 93.26	358 32.34 33.97 98.08	350 31.62 33.21 94.34	1054 95.21
<b>Unsure</b>	14 1.26 42.42 3.77	3 0.27 9.09 0.82	16 1.45 48.48 4.31	33 2.98
<b>Total</b>	371 33.51	365 32.97	371 33.51	1107 100.00

<b>Table 2 of know_q1b by event</b>				
<b>Controlling for group=Experimental</b>				
<b>know_q1b(Place duct tape over a child's mouth as a form of punishment)</b>	<b>event(Time)</b>			
<b>Frequency Percent Row Pct Col Pct</b>	<b>Pre-survey</b>	<b>Post-survey</b>	<b>Re-test</b>	<b>Total</b>
<b>no</b>	9 1.20 50.00 2.39	9 1.20 50.00 2.41	0 0.00 0.00 .	18 2.40
<b>YES</b>	355 47.33 49.51 94.16	362 48.27 50.49 97.05	0 0.00 0.00 .	717 95.60
<b>Unsure</b>	13 1.73 86.67 3.45	2 0.27 13.33 0.54	0 0.00 0.00 .	15 2.00
<b>Total</b>	377 50.27	373 49.73	0 0.00	750 100.00

Knowledge Question 1b correct				
know_q1b_correct	Frequency	Percent	Cumulative Frequency	Cumulative Percent
no	86	4.63	86	4.63
YES	1771	95.37	1857	100.00

Table 1 of know_q1b_correct by event				
Controlling for group=Control				
know_q1b_correct(Knowledge Question 1b correct)	event(Time)			
Frequency Percent Row Pct Col Pct	Pre-survey	Post-survey	Re-test	Total
no	25 2.26 47.17 6.74	7 0.63 13.21 1.92	21 1.90 39.62 5.66	53 4.79
YES	346 31.26 32.83 93.26	358 32.34 33.97 98.08	350 31.62 33.21 94.34	1054 95.21
Total	371 33.51	365 32.97	371 33.51	1107 100.00

Table 2 of know_q1b_correct by event				
Controlling for group=Experimental				
know_q1b_correct(Knowledge Question 1b correct)	event(Time)			
Frequency Percent Row Pct Col Pct	Pre-survey	Post-survey	Re-test	Total
no	22 2.93 66.67 5.84	11 1.47 33.33 2.95	0 0.00 0.00 .	33 4.40
YES	355 47.33 49.51 94.16	362 48.27 50.49 97.05	0 0.00 0.00 .	717 95.60
Total	377 50.27	373 49.73	0 0.00	750 100.00

<b>Cause any kind of physical injury</b>				
<b>know_q1c</b>	<b>Frequency</b>	<b>Percent</b>	<b>Cumulative Frequency</b>	<b>Cumulative Percent</b>
<b>no</b>	146	7.86	146	7.86
<b>YES</b>	1598	86.05	1744	93.91
<b>Unsure</b>	113	6.09	1857	100.00

<b>Table 1 of know_q1c by event</b>				
<b>Controlling for group=Control</b>				
<b>know_q1c(Cause any kind of physical injury)</b>	<b>event(Time)</b>			
<b>Frequency Percent Row Pct Col Pct</b>	<b>Pre-survey</b>	<b>Post-survey</b>	<b>Re-test</b>	<b>Total</b>
<b>no</b>	23 2.08 28.05 6.20	36 3.25 43.90 9.86	23 2.08 28.05 6.20	82 7.41
<b>YES</b>	313 28.27 33.19 84.37	322 29.09 34.15 88.22	308 27.82 32.66 83.02	943 85.19
<b>Unsure</b>	35 3.16 42.68 9.43	7 0.63 8.54 1.92	40 3.61 48.78 10.78	82 7.41
<b>Total</b>	371 33.51	365 32.97	371 33.51	1107 100.00

<b>Table 2 of know_q1c by event</b>				
<b>Controlling for group=Experimental</b>				
<b>know_q1c(Cause any kind of physical injury)</b>	<b>event(Time)</b>			
<b>Frequency Percent Row Pct Col Pct</b>	<b>Pre-survey</b>	<b>Post-survey</b>	<b>Re-test</b>	<b>Total</b>
<b>no</b>	27 3.60 42.19 7.16	37 4.93 57.81 9.92	0 0.00 0.00 .	64 8.53
<b>YES</b>	324 43.20 49.47 85.94	331 44.13 50.53 88.74	0 0.00 0.00 .	655 87.33
<b>Unsure</b>	26 3.47 83.87 6.90	5 0.67 16.13 1.34	0 0.00 0.00 .	31 4.13
<b>Total</b>	377 50.27	373 49.73	0 0.00	750 100.00

Knowledge Question 1c correct				
know_q1c_correct	Frequency	Percent	Cumulative Frequency	Cumulative Percent
no	1711	92.14	1711	92.14
YES	146	7.86	1857	100.00

Table 1 of know_q1c_correct by event				
Controlling for group=Control				
know_q1c_correct(Knowledge Question 1c correct)	event(Time)			
Frequency Percent Row Pct Col Pct	Pre-survey	Post-survey	Re-test	Total
no	348 31.44 33.95 93.80	329 29.72 32.10 90.14	348 31.44 33.95 93.80	1025 92.59
YES	23 2.08 28.05 6.20	36 3.25 43.90 9.86	23 2.08 28.05 6.20	82 7.41
<b>Total</b>	371 33.51	365 32.97	371 33.51	1107 100.00

Table 2 of know_q1c_correct by event				
Controlling for group=Experimental				
know_q1c_correct(Knowledge Question 1c correct)	event(Time)			
Frequency Percent Row Pct Col Pct	Pre-survey	Post-survey	Re-test	Total
no	350 46.67 51.02 92.84	336 44.80 48.98 90.08	0 0.00 0.00 .	686 91.47
YES	27 3.60 42.19 7.16	37 4.93 57.81 9.92	0 0.00 0.00 .	64 8.53
<b>Total</b>	377 50.27	373 49.73	0 0.00	750 100.00

<b>Cause substantial pain from disciplining a child</b>				
<b>know_q1d</b>	<b>Frequency</b>	<b>Percent</b>	<b>Cumulative Frequency</b>	<b>Cumulative Percent</b>
<b>no</b>	35	1.88	35	1.88
<b>YES</b>	1761	94.83	1796	96.72
<b>Unsure</b>	61	3.28	1857	100.00

<b>Table 1 of know_q1d by event</b>				
<b>Controlling for group=Control</b>				
<b>know_q1d(Cause substantial pain from disciplining a child)</b>	<b>event(Time)</b>			
<b>Frequency Percent Row Pct Col Pct</b>	<b>Pre-survey</b>	<b>Post-survey</b>	<b>Re-test</b>	<b>Total</b>
<b>no</b>	9 0.81 56.25 2.43	3 0.27 18.75 0.82	4 0.36 25.00 1.08	16 1.45
<b>YES</b>	340 30.71 32.26 91.64	360 32.52 34.16 98.63	354 31.98 33.59 95.42	1054 95.21
<b>Unsure</b>	22 1.99 59.46 5.93	2 0.18 5.41 0.55	13 1.17 35.14 3.50	37 3.34
<b>Total</b>	371 33.51	365 32.97	371 33.51	1107 100.00

<b>Table 2 of know_q1d by event</b>				
<b>Controlling for group=Experimental</b>				
<b>know_q1d(Cause substantial pain from disciplining a child)</b>	<b>event(Time)</b>			
<b>Frequency Percent Row Pct Col Pct</b>	<b>Pre-survey</b>	<b>Post-survey</b>	<b>Re-test</b>	<b>Total</b>
<b>no</b>	13 1.73 68.42 3.45	6 0.80 31.58 1.61	0 0.00 0.00 .	19 2.53
<b>YES</b>	342 45.60 48.37 90.72	365 48.67 51.63 97.86	0 0.00 0.00 .	707 94.27
<b>Unsure</b>	22 2.93 91.67 5.84	2 0.27 8.33 0.54	0 0.00 0.00 .	24 3.20
<b>Total</b>	377 50.27	373 49.73	0 0.00	750 100.00



Knowledge Question 1d correct				
know_q1d_correct	Frequency	Percent	Cumulative Frequency	Cumulative Percent
no	96	5.17	96	5.17
YES	1761	94.83	1857	100.00

Table 1 of know_q1d_correct by event				
Controlling for group=Control				
know_q1d_correct(Knowledge Question 1d correct)	event(Time)			
Frequency Percent Row Pct Col Pct	Pre-survey	Post-survey	Re-test	Total
no	31 2.80 58.49 8.36	5 0.45 9.43 1.37	17 1.54 32.08 4.58	53 4.79
YES	340 30.71 32.26 91.64	360 32.52 34.16 98.63	354 31.98 33.59 95.42	1054 95.21
<b>Total</b>	371 33.51	365 32.97	371 33.51	1107 100.00

Table 2 of know_q1d_correct by event				
Controlling for group=Experimental				
know_q1d_correct(Knowledge Question 1d correct)	event(Time)			
Frequency Percent Row Pct Col Pct	Pre-survey	Post-survey	Re-test	Total
no	35 4.67 81.40 9.28	8 1.07 18.60 2.14	0 0.00 0.00 .	43 5.73
YES	342 45.60 48.37 90.72	365 48.67 51.63 97.86	0 0.00 0.00 .	707 94.27
<b>Total</b>	377 50.27	373 49.73	0 0.00	750 100.00

<b>Impair physical functioning from disciplining a child</b>				
<b>know_q1e</b>	<b>Frequency</b>	<b>Percent</b>	<b>Cumulative Frequency</b>	<b>Cumulative Percent</b>
<b>no</b>	24	1.29	24	1.29
<b>YES</b>	1768	95.21	1792	96.50
<b>Unsure</b>	65	3.50	1857	100.00

<b>Table 1 of know_q1e by event</b>				
<b>Controlling for group=Control</b>				
<b>know_q1e(Impair physical functioning from disciplining a child)</b>	<b>event(Time)</b>			
<b>Frequency Percent Row Pct Col Pct</b>	<b>Pre-survey</b>	<b>Post-survey</b>	<b>Re-test</b>	<b>Total</b>
<b>no</b>	6 0.54 46.15 1.62	2 0.18 15.38 0.55	5 0.45 38.46 1.35	13 1.17
<b>YES</b>	344 31.07 32.45 92.72	361 32.61 34.06 98.90	355 32.07 33.49 95.69	1060 95.75
<b>Unsure</b>	21 1.90 61.76 5.66	2 0.18 5.88 0.55	11 0.99 32.35 2.96	34 3.07
<b>Total</b>	371 33.51	365 32.97	371 33.51	1107 100.00

<b>Table 2 of know_q1e by event</b>				
<b>Controlling for group=Experimental</b>				
<b>know_q1e(Impair physical functioning from disciplining a child)</b>	<b>event(Time)</b>			
<b>Frequency Percent Row Pct Col Pct</b>	<b>Pre-survey</b>	<b>Post-survey</b>	<b>Re-test</b>	<b>Total</b>
<b>no</b>	8 1.07 72.73 2.12	3 0.40 27.27 0.80	0 0.00 0.00 .	11 1.47
<b>YES</b>	340 45.33 48.02 90.19	368 49.07 51.98 98.66	0 0.00 0.00 .	708 94.40
<b>Unsure</b>	29 3.87 93.55 7.69	2 0.27 6.45 0.54	0 0.00 0.00 .	31 4.13
<b>Total</b>	377 50.27	373 49.73	0 0.00	750 100.00

<b>Knowledge Question 1e correct</b>				
<b>know_q1e_correct</b>	<b>Frequency</b>	<b>Percent</b>	<b>Cumulative Frequency</b>	<b>Cumulative Percent</b>
<b>no</b>	89	4.79	89	4.79
<b>YES</b>	1768	95.21	1857	100.00

<b>Table 1 of know_q1e_correct by event</b>				
<b>Controlling for group=Control</b>				
<b>know_q1e_correct(Knowledge Question 1e correct)</b>	<b>event(Time)</b>			
<b>Frequency Percent Row Pct Col Pct</b>	<b>Pre-survey</b>	<b>Post-survey</b>	<b>Re-test</b>	<b>Total</b>
<b>no</b>	27 2.44 57.45 7.28	4 0.36 8.51 1.10	16 1.45 34.04 4.31	47 4.25
<b>YES</b>	344 31.07 32.45 92.72	361 32.61 34.06 98.90	355 32.07 33.49 95.69	1060 95.75
<b>Total</b>	371 33.51	365 32.97	371 33.51	1107 100.00

<b>Table 2 of know_q1e_correct by event</b>				
<b>Controlling for group=Experimental</b>				
<b>know_q1e_correct(Knowledge Question 1e correct)</b>	<b>event(Time)</b>			
<b>Frequency Percent Row Pct Col Pct</b>	<b>Pre-survey</b>	<b>Post-survey</b>	<b>Re-test</b>	<b>Total</b>
<b>no</b>	37 4.93 88.10 9.81	5 0.67 11.90 1.34	0 0.00 0.00 .	42 5.60
<b>YES</b>	340 45.33 48.02 90.19	368 49.07 51.98 98.66	0 0.00 0.00 .	708 94.40
<b>Total</b>	377 50.27	373 49.73	0 0.00	750 100.00

<b>Forcefully slap a child under one year of age</b>				
<b>know_q1f</b>	<b>Frequency</b>	<b>Percent</b>	<b>Cumulative Frequency</b>	<b>Cumulative Percent</b>
<b>no</b>	35	1.88	35	1.88
<b>YES</b>	1777	95.69	1812	97.58
<b>Unsure</b>	45	2.42	1857	100.00

<b>Table 1 of know_q1f by event</b>				
<b>Controlling for group=Control</b>				
<b>know_q1f(Forcefully slap a child under one year of age)</b>	<b>event(Time)</b>			
<b>Frequency Percent Row Pct Col Pct</b>	<b>Pre-survey</b>	<b>Post-survey</b>	<b>Re-test</b>	<b>Total</b>
<b>no</b>	10 0.90 62.50 2.70	1 0.09 6.25 0.27	5 0.45 31.25 1.35	16 1.45
<b>YES</b>	347 31.35 32.46 93.53	363 32.79 33.96 99.45	359 32.43 33.58 96.77	1069 96.57
<b>Unsure</b>	14 1.26 63.64 3.77	1 0.09 4.55 0.27	7 0.63 31.82 1.89	22 1.99
<b>Total</b>	371 33.51	365 32.97	371 33.51	1107 100.00

<b>Table 2 of know_q1f by event</b>				
<b>Controlling for group=Experimental</b>				
<b>know_q1f(Forcefully slap a child under one year of age)</b>	<b>event(Time)</b>			
<b>Frequency Percent Row Pct Col Pct</b>	<b>Pre-survey</b>	<b>Post-survey</b>	<b>Re-test</b>	<b>Total</b>
<b>no</b>	15 2.00 78.95 3.98	4 0.53 21.05 1.07	0 0.00 0.00 .	19 2.53
<b>YES</b>	340 45.33 48.02 90.19	368 49.07 51.98 98.66	0 0.00 0.00 .	708 94.40
<b>Unsure</b>	22 2.93 95.65 5.84	1 0.13 4.35 0.27	0 0.00 0.00 .	23 3.07
<b>Total</b>	377 50.27	373 49.73	0 0.00	750 100.00

Knowledge Question 1f correct				
know_q1f_correct	Frequency	Percent	Cumulative Frequency	Cumulative Percent
no	80	4.31	80	4.31
YES	1777	95.69	1857	100.00

Table 1 of know_q1f_correct by event				
Controlling for group=Control				
know_q1f_correct(Knowledge Question 1f correct)	event(Time)			
Frequency Percent Row Pct Col Pct	Pre-survey	Post-survey	Re-test	Total
no	24 2.17 63.16 6.47	2 0.18 5.26 0.55	12 1.08 31.58 3.23	38 3.43
YES	347 31.35 32.46 93.53	363 32.79 33.96 99.45	359 32.43 33.58 96.77	1069 96.57
<b>Total</b>	371 33.51	365 32.97	371 33.51	1107 100.00

Table 2 of know_q1f_correct by event				
Controlling for group=Experimental				
know_q1f_correct(Knowledge Question 1f correct)	event(Time)			
Frequency Percent Row Pct Col Pct	Pre-survey	Post-survey	Re-test	Total
no	37 4.93 88.10 9.81	5 0.67 11.90 1.34	0 0.00 0.00 .	42 5.60
YES	340 45.33 48.02 90.19	368 49.07 51.98 98.66	0 0.00 0.00 .	708 94.40
<b>Total</b>	377 50.27	373 49.73	0 0.00	750 100.00

<b>Expose a child to domestic violence</b>				
<b>know_q1g</b>	<b>Frequency</b>	<b>Percent</b>	<b>Cumulative Frequency</b>	<b>Cumulative Percent</b>
<b>no</b>	230	12.39	230	12.39
<b>YES</b>	1431	77.06	1661	89.45
<b>Unsure</b>	196	10.55	1857	100.00

<b>Table 1 of know_q1g by event</b>				
<b>Controlling for group=Control</b>				
<b>know_q1g(Expose a child to domestic violence)</b>	<b>event(Time)</b>			
<b>Frequency Percent Row Pct Col Pct</b>	<b>Pre-survey</b>	<b>Post-survey</b>	<b>Re-test</b>	<b>Total</b>
<b>no</b>	31 2.80 24.41 8.36	71 6.41 55.91 19.45	25 2.26 19.69 6.74	127 11.47
<b>YES</b>	277 25.02 32.25 74.66	286 25.84 33.29 78.36	296 26.74 34.46 79.78	859 77.60
<b>Unsure</b>	63 5.69 52.07 16.98	8 0.72 6.61 2.19	50 4.52 41.32 13.48	121 10.93
<b>Total</b>	371 33.51	365 32.97	371 33.51	1107 100.00



<b>Table 2 of know_q1g by event</b>				
<b>Controlling for group=Experimental</b>				
<b>know_q1g(Expose a child to domestic violence)</b>	<b>event(Time)</b>			
<b>Frequency Percent Row Pct Col Pct</b>	<b>Pre-survey</b>	<b>Post-survey</b>	<b>Re-test</b>	<b>Total</b>
<b>no</b>	27 3.60 26.21 7.16	76 10.13 73.79 20.38	0 0.00 0.00 .	103 13.73
<b>YES</b>	282 37.60 49.30 74.80	290 38.67 50.70 77.75	0 0.00 0.00 .	572 76.27
<b>Unsure</b>	68 9.07 90.67 18.04	7 0.93 9.33 1.88	0 0.00 0.00 .	75 10.00
<b>Total</b>	377 50.27	373 49.73	0 0.00	750 100.00

Knowledge Question 1g correct				
know_q1g_correct	Frequency	Percent	Cumulative Frequency	Cumulative Percent
no	1627	87.61	1627	87.61
YES	230	12.39	1857	100.00

Table 1 of know_q1g_correct by event				
Controlling for group=Control				
know_q1g_correct(Knowledge Question 1g correct)	event(Time)			
Frequency Percent Row Pct Col Pct	Pre-survey	Post-survey	Re-test	Total
no	340 30.71 34.69 91.64	294 26.56 30.00 80.55	346 31.26 35.31 93.26	980 88.53
YES	31 2.80 24.41 8.36	71 6.41 55.91 19.45	25 2.26 19.69 6.74	127 11.47
<b>Total</b>	371 33.51	365 32.97	371 33.51	1107 100.00

Table 2 of know_q1g_correct by event				
Controlling for group=Experimental				
know_q1g_correct(Knowledge Question 1g correct)	event(Time)			
Frequency Percent Row Pct Col Pct	Pre-survey	Post-survey	Re-test	Total
no	350 46.67 54.10 92.84	297 39.60 45.90 79.62	0 0.00 0.00 .	647 86.27
YES	27 3.60 26.21 7.16	76 10.13 73.79 20.38	0 0.00 0.00 .	103 13.73
<b>Total</b>	377 50.27	373 49.73	0 0.00	750 100.00

<b>Any bruising in an infant who hasn't started pulling to stand</b>				
<b>know_q2a</b>	<b>Frequency</b>	<b>Percent</b>	<b>Cumulative Frequency</b>	<b>Cumulative Percent</b>
<b>no</b>	71	3.83	71	3.83
<b>YES</b>	1662	89.55	1733	93.37
<b>Unsure</b>	123	6.63	1856	100.00
<b>Frequency Missing = 1</b>				

<b>Table 1 of know_q2a by event</b>				
<b>Controlling for group=Control</b>				
<b>know_q2a(Any bruising in an infant who hasn't started pulling to stand)</b>	<b>event(Time)</b>			
<b>Frequency Percent Row Pct Col Pct</b>	<b>Pre-survey</b>	<b>Post-survey</b>	<b>Re-test</b>	<b>Total</b>
<b>no</b>	20 1.81 45.45 5.39	4 0.36 9.09 1.10	20 1.81 45.45 5.39	44 3.97
<b>YES</b>	308 27.82 31.27 83.02	360 32.52 36.55 98.63	317 28.64 32.18 85.44	985 88.98
<b>Unsure</b>	43 3.88 55.13 11.59	1 0.09 1.28 0.27	34 3.07 43.59 9.16	78 7.05
<b>Total</b>	371 33.51	365 32.97	371 33.51	1107 100.00

<b>Table 2 of know_q2a by event</b>				
<b>Controlling for group=Experimental</b>				
<b>know_q2a(Any bruising in an infant who hasn't started pulling to stand)</b>	<b>event(Time)</b>			
<b>Frequency Percent Row Pct Col Pct</b>	<b>Pre-survey</b>	<b>Post-survey</b>	<b>Re-test</b>	<b>Total</b>
<b>no</b>	19 2.54 70.37 5.05	8 1.07 29.63 2.14	0 0.00 0.00 .	27 3.60
<b>YES</b>	316 42.19 46.68 84.04	361 48.20 53.32 96.78	0 0.00 0.00 .	677 90.39
<b>Unsure</b>	41 5.47 91.11 10.90	4 0.53 8.89 1.07	0 0.00 0.00 .	45 6.01
<b>Total</b>	376 50.20	373 49.80	0 0.00	749 100.00
<b>Frequency Missing = 1</b>				

Knowledge Question 2a correct				
know_q2a_correct	Frequency	Percent	Cumulative Frequency	Cumulative Percent
no	194	10.45	194	10.45
YES	1662	89.55	1856	100.00
Frequency Missing = 1				

Table 1 of know_q2a_correct by event				
Controlling for group=Control				
know_q2a_correct(Knowledge Question 2a correct)	event(Time)			
Frequency Percent Row Pct Col Pct	Pre-survey	Post-survey	Re-test	Total
no	63 5.69 51.64 16.98	5 0.45 4.10 1.37	54 4.88 44.26 14.56	122 11.02
YES	308 27.82 31.27 83.02	360 32.52 36.55 98.63	317 28.64 32.18 85.44	985 88.98
Total	371 33.51	365 32.97	371 33.51	1107 100.00

Table 2 of know_q2a_correct by event				
Controlling for group=Experimental				
know_q2a_correct(Knowledge Question 2a correct)	event(Time)			
Frequency Percent Row Pct Col Pct	Pre-survey	Post-survey	Re-test	Total
no	60 8.01 83.33 15.96	12 1.60 16.67 3.22	0 0.00 0.00 .	72 9.61
YES	316 42.19 46.68 84.04	361 48.20 53.32 96.78	0 0.00 0.00 .	677 90.39
Total	376 50.20	373 49.80	0 0.00	749 100.00
Frequency Missing = 1				

<b>Any bruising in a child younger than 5 years old</b>				
<b>know_q2b</b>	<b>Frequency</b>	<b>Percent</b>	<b>Cumulative Frequency</b>	<b>Cumulative Percent</b>
<b>no</b>	876	47.20	876	47.20
<b>YES</b>	686	36.96	1562	84.16
<b>Unsure</b>	294	15.84	1856	100.00
<b>Frequency Missing = 1</b>				

<b>Table 1 of know_q2b by event</b>				
<b>Controlling for group=Control</b>				
<b>know_q2b(Any bruising in a child younger than 5 years old)</b>	<b>event(Time)</b>			
<b>Frequency Percent Row Pct Col Pct</b>	<b>Pre-survey</b>	<b>Post-survey</b>	<b>Re-test</b>	<b>Total</b>
<b>no</b>	165 14.91 32.80 44.47	188 16.98 37.38 51.51	150 13.55 29.82 40.43	503 45.44
<b>YES</b>	120 10.84 28.24 32.35	162 14.63 38.12 44.38	143 12.92 33.65 38.54	425 38.39
<b>Unsure</b>	86 7.77 48.04 23.18	15 1.36 8.38 4.11	78 7.05 43.58 21.02	179 16.17
<b>Total</b>	371 33.51	365 32.97	371 33.51	1107 100.00

<b>Table 2 of know_q2b by event</b>				
<b>Controlling for group=Experimental</b>				
<b>know_q2b(Any bruising in a child younger than 5 years old)</b>	<b>event(Time)</b>			
<b>Frequency Percent Row Pct Col Pct</b>	<b>Pre-survey</b>	<b>Post-survey</b>	<b>Re-test</b>	<b>Total</b>
<b>no</b>	167 22.30 44.77 44.41	206 27.50 55.23 55.23	0 0.00 0.00 .	373 49.80
<b>YES</b>	116 15.49 44.44 30.85	145 19.36 55.56 38.87	0 0.00 0.00 .	261 34.85
<b>Unsure</b>	93 12.42 80.87 24.73	22 2.94 19.13 5.90	0 0.00 0.00 .	115 15.35
<b>Total</b>	376 50.20	373 49.80	0 0.00	749 100.00
<b>Frequency Missing = 1</b>				

<b>Knowledge Question 2b correct</b>				
<b>know_q2b_correct</b>	<b>Frequency</b>	<b>Percent</b>	<b>Cumulative Frequency</b>	<b>Cumulative Percent</b>
<b>no</b>	980	52.80	980	52.80
<b>YES</b>	876	47.20	1856	100.00
<b>Frequency Missing = 1</b>				

<b>Table 1 of know_q2b_correct by event</b>				
<b>Controlling for group=Control</b>				
<b>know_q2b_correct(Knowledge Question 2b correct)</b>	<b>event(Time)</b>			
<b>Frequency Percent Row Pct Col Pct</b>	<b>Pre-survey</b>	<b>Post-survey</b>	<b>Re-test</b>	<b>Total</b>
<b>no</b>	206 18.61 34.11 55.53	177 15.99 29.30 48.49	221 19.96 36.59 59.57	604 54.56
<b>YES</b>	165 14.91 32.80 44.47	188 16.98 37.38 51.51	150 13.55 29.82 40.43	503 45.44
<b>Total</b>	371 33.51	365 32.97	371 33.51	1107 100.00

<b>Table 2 of know_q2b_correct by event</b>				
<b>Controlling for group=Experimental</b>				
<b>know_q2b_correct(Knowledge Question 2b correct)</b>	<b>event(Time)</b>			
<b>Frequency Percent Row Pct Col Pct</b>	<b>Pre-survey</b>	<b>Post-survey</b>	<b>Re-test</b>	<b>Total</b>
<b>no</b>	209 27.90 55.59 55.59	167 22.30 44.41 44.77	0 0.00 0.00 .	376 50.20
<b>YES</b>	167 22.30 44.77 44.41	206 27.50 55.23 55.23	0 0.00 0.00 .	373 49.80
<b>Total</b>	376 50.20	373 49.80	0 0.00	749 100.00
<b>Frequency Missing = 1</b>				



<b>Any bruising from spanking</b>				
<b>know_q2c</b>	<b>Frequency</b>	<b>Percent</b>	<b>Cumulative Frequency</b>	<b>Cumulative Percent</b>
<b>no</b>	51	2.75	51	2.75
<b>YES</b>	1714	92.35	1765	95.10
<b>Unsure</b>	91	4.90	1856	100.00
<b>Frequency Missing = 1</b>				

<b>Table 1 of know_q2c by event</b>				
<b>Controlling for group=Control</b>				
<b>know_q2c(Any bruising from spanking)</b>	<b>event(Time)</b>			
<b>Frequency Percent Row Pct Col Pct</b>	<b>Pre-survey</b>	<b>Post-survey</b>	<b>Re-test</b>	<b>Total</b>
<b>no</b>	7 0.63 38.89 1.89	7 0.63 38.89 1.92	4 0.36 22.22 1.08	18 1.63
<b>YES</b>	337 30.44 32.72 90.84	353 31.89 34.27 96.71	340 30.71 33.01 91.64	1030 93.04
<b>Unsure</b>	27 2.44 45.76 7.28	5 0.45 8.47 1.37	27 2.44 45.76 7.28	59 5.33
<b>Total</b>	371 33.51	365 32.97	371 33.51	1107 100.00

<b>Table 2 of know_q2c by event</b>				
<b>Controlling for group=Experimental</b>				
<b>know_q2c(Any bruising from spanking)</b>	<b>event(Time)</b>			
<b>Frequency Percent Row Pct Col Pct</b>	<b>Pre-survey</b>	<b>Post-survey</b>	<b>Re-test</b>	<b>Total</b>
<b>no</b>	16 2.14 48.48 4.26	17 2.27 51.52 4.56	0 0.00 0.00 .	33 4.41
<b>YES</b>	332 44.33 48.54 88.30	352 47.00 51.46 94.37	0 0.00 0.00 .	684 91.32
<b>Unsure</b>	28 3.74 87.50 7.45	4 0.53 12.50 1.07	0 0.00 0.00 .	32 4.27
<b>Total</b>	376 50.20	373 49.80	0 0.00	749 100.00
<b>Frequency Missing = 1</b>				

Knowledge Question 2c correct				
know_q2c_correct	Frequency	Percent	Cumulative Frequency	Cumulative Percent
no	142	7.65	142	7.65
YES	1714	92.35	1856	100.00
Frequency Missing = 1				

Table 1 of know_q2c_correct by event				
Controlling for group=Control				
know_q2c_correct(Knowledge Question 2c correct)	event(Time)			
Frequency Percent Row Pct Col Pct	Pre-survey	Post-survey	Re-test	Total
no	34 3.07 44.16 9.16	12 1.08 15.58 3.29	31 2.80 40.26 8.36	77 6.96
YES	337 30.44 32.72 90.84	353 31.89 34.27 96.71	340 30.71 33.01 91.64	1030 93.04
Total	371 33.51	365 32.97	371 33.51	1107 100.00

Table 2 of know_q2c_correct by event				
Controlling for group=Experimental				
know_q2c_correct(Knowledge Question 2c correct)	event(Time)			
Frequency Percent Row Pct Col Pct	Pre-survey	Post-survey	Re-test	Total
no	44 5.87 67.69 11.70	21 2.80 32.31 5.63	0 0.00 0.00 .	65 8.68
YES	332 44.33 48.54 88.30	352 47.00 51.46 94.37	0 0.00 0.00 .	684 91.32
Total	376 50.20	373 49.80	0 0.00	749 100.00
Frequency Missing = 1				

<b>Bruising on toddler's shins</b>				
<b>know_q2d</b>	<b>Frequency</b>	<b>Percent</b>	<b>Cumulative Frequency</b>	<b>Cumulative Percent</b>
<b>no</b>	1091	58.78	1091	58.78
<b>YES</b>	476	25.65	1567	84.43
<b>Unsure</b>	289	15.57	1856	100.00
<b>Frequency Missing = 1</b>				

<b>Table 1 of know_q2d by event</b>				
<b>Controlling for group=Control</b>				
<b>know_q2d(Bruising on toddler's shins)</b>	<b>event(Time)</b>			
<b>Frequency Percent Row Pct Col Pct</b>	<b>Pre-survey</b>	<b>Post-survey</b>	<b>Re-test</b>	<b>Total</b>
<b>no</b>	226 20.42 34.77 60.92	211 19.06 32.46 57.81	213 19.24 32.77 57.41	650 58.72
<b>YES</b>	65 5.87 23.64 17.52	131 11.83 47.64 35.89	79 7.14 28.73 21.29	275 24.84
<b>Unsure</b>	80 7.23 43.96 21.56	23 2.08 12.64 6.30	79 7.14 43.41 21.29	182 16.44
<b>Total</b>	371 33.51	365 32.97	371 33.51	1107 100.00

<b>Table 2 of know_q2d by event</b>				
<b>Controlling for group=Experimental</b>				
<b>know_q2d(Bruising on toddler's shins)</b>	<b>event(Time)</b>			
<b>Frequency Percent Row Pct Col Pct</b>	<b>Pre-survey</b>	<b>Post-survey</b>	<b>Re-test</b>	<b>Total</b>
<b>no</b>	218 29.11 49.43 57.98	223 29.77 50.57 59.79	0 0.00 0.00 .	441 58.88
<b>YES</b>	75 10.01 37.31 19.95	126 16.82 62.69 33.78	0 0.00 0.00 .	201 26.84
<b>Unsure</b>	83 11.08 77.57 22.07	24 3.20 22.43 6.43	0 0.00 0.00 .	107 14.29
<b>Total</b>	376 50.20	373 49.80	0 0.00	749 100.00
<b>Frequency Missing = 1</b>				

<b>Knowledge Question 2d correct</b>				
<b>know_q2d_correct</b>	<b>Frequency</b>	<b>Percent</b>	<b>Cumulative Frequency</b>	<b>Cumulative Percent</b>
<b>no</b>	765	41.22	765	41.22
<b>YES</b>	1091	58.78	1856	100.00
<b>Frequency Missing = 1</b>				

<b>Table 1 of know_q2d_correct by event</b>				
<b>Controlling for group=Control</b>				
<b>know_q2d_correct(Knowledge Question 2d correct)</b>	<b>event(Time)</b>			
<b>Frequency Percent Row Pct Col Pct</b>	<b>Pre-survey</b>	<b>Post-survey</b>	<b>Re-test</b>	<b>Total</b>
<b>no</b>	145 13.10 31.73 39.08	154 13.91 33.70 42.19	158 14.27 34.57 42.59	457 41.28
<b>YES</b>	226 20.42 34.77 60.92	211 19.06 32.46 57.81	213 19.24 32.77 57.41	650 58.72
<b>Total</b>	371 33.51	365 32.97	371 33.51	1107 100.00

<b>Table 2 of know_q2d_correct by event</b>				
<b>Controlling for group=Experimental</b>				
<b>know_q2d_correct(Knowledge Question 2d correct)</b>	<b>event(Time)</b>			
<b>Frequency Percent Row Pct Col Pct</b>	<b>Pre-survey</b>	<b>Post-survey</b>	<b>Re-test</b>	<b>Total</b>
<b>no</b>	158 21.09 51.30 42.02	150 20.03 48.70 40.21	0 0.00 0.00 .	308 41.12
<b>YES</b>	218 29.11 49.43 57.98	223 29.77 50.57 59.79	0 0.00 0.00 .	441 58.88
<b>Total</b>	376 50.20	373 49.80	0 0.00	749 100.00
<b>Frequency Missing = 1</b>				

<b>Bruising on toddler's ears</b>				
<b>know_q2e</b>	<b>Frequency</b>	<b>Percent</b>	<b>Cumulative Frequency</b>	<b>Cumulative Percent</b>
<b>no</b>	113	6.09	113	6.09
<b>YES</b>	1506	81.14	1619	87.23
<b>Unsure</b>	237	12.77	1856	100.00
<b>Frequency Missing = 1</b>				

<b>Table 1 of know_q2e by event</b>				
<b>Controlling for group=Control</b>				
<b>know_q2e(Bruising on toddler's ears)</b>	<b>event(Time)</b>			
<b>Frequency Percent Row Pct Col Pct</b>	<b>Pre-survey</b>	<b>Post-survey</b>	<b>Re-test</b>	<b>Total</b>
<b>no</b>	24 2.17 36.36 6.47	14 1.26 21.21 3.84	28 2.53 42.42 7.55	66 5.96
<b>YES</b>	274 24.75 30.58 73.85	343 30.98 38.28 93.97	279 25.20 31.14 75.20	896 80.94
<b>Unsure</b>	73 6.59 50.34 19.68	8 0.72 5.52 2.19	64 5.78 44.14 17.25	145 13.10
<b>Total</b>	371 33.51	365 32.97	371 33.51	1107 100.00

<b>Table 2 of know_q2e by event</b>				
<b>Controlling for group=Experimental</b>				
<b>know_q2e(Bruising on toddler's ears)</b>	<b>event(Time)</b>			
<b>Frequency Percent Row Pct Col Pct</b>	<b>Pre-survey</b>	<b>Post-survey</b>	<b>Re-test</b>	<b>Total</b>
<b>no</b>	28 3.74 59.57 7.45	19 2.54 40.43 5.09	0 0.00 0.00 .	47 6.28
<b>YES</b>	265 35.38 43.44 70.48	345 46.06 56.56 92.49	0 0.00 0.00 .	610 81.44
<b>Unsure</b>	83 11.08 90.22 22.07	9 1.20 9.78 2.41	0 0.00 0.00 .	92 12.28
<b>Total</b>	376 50.20	373 49.80	0 0.00	749 100.00
<b>Frequency Missing = 1</b>				



Knowledge Question 2e correct				
know_q2e_correct	Frequency	Percent	Cumulative Frequency	Cumulative Percent
no	350	18.86	350	18.86
YES	1506	81.14	1856	100.00
Frequency Missing = 1				

Table 1 of know_q2e_correct by event				
Controlling for group=Control				
know_q2e_correct(Knowledge Question 2e correct)	event(Time)			
Frequency Percent Row Pct Col Pct	Pre-survey	Post-survey	Re-test	Total
no	97 8.76 45.97 26.15	22 1.99 10.43 6.03	92 8.31 43.60 24.80	211 19.06
YES	274 24.75 30.58 73.85	343 30.98 38.28 93.97	279 25.20 31.14 75.20	896 80.94
Total	371 33.51	365 32.97	371 33.51	1107 100.00

Table 2 of know_q2e_correct by event				
Controlling for group=Experimental				
know_q2e_correct(Knowledge Question 2e correct)	event(Time)			
Frequency Percent Row Pct Col Pct	Pre-survey	Post-survey	Re-test	Total
no	111 14.82 79.86 29.52	28 3.74 20.14 7.51	0 0.00 0.00 .	139 18.56
YES	265 35.38 43.44 70.48	345 46.06 56.56 92.49	0 0.00 0.00 .	610 81.44
Total	376 50.20	373 49.80	0 0.00	749 100.00
Frequency Missing = 1				

<b>Financial penalty</b>				
<b>know_q3a</b>	<b>Frequency</b>	<b>Percent</b>	<b>Cumulative Frequency</b>	<b>Cumulative Percent</b>
<b>no</b>	245	13.20	245	13.20
<b>YES</b>	1146	61.75	1391	74.95
<b>Unsure</b>	465	25.05	1856	100.00
<b>Frequency Missing = 1</b>				

<b>Table 1 of know_q3a by event</b>				
<b>Controlling for group=Control</b>				
<b>know_q3a(Financial penalty)</b>	<b>event(Time)</b>			
<b>Frequency Percent Row Pct Col Pct</b>	<b>Pre-survey</b>	<b>Post-survey</b>	<b>Re-test</b>	<b>Total</b>
<b>no</b>	49 4.43 36.57 13.21	34 3.07 25.37 9.32	51 4.61 38.06 13.75	134 12.10
<b>YES</b>	165 14.91 25.27 44.47	316 28.55 48.39 86.58	172 15.54 26.34 46.36	653 58.99
<b>Unsure</b>	157 14.18 49.06 42.32	15 1.36 4.69 4.11	148 13.37 46.25 39.89	320 28.91
<b>Total</b>	371 33.51	365 32.97	371 33.51	1107 100.00

<b>Table 2 of know_q3a by event</b>				
<b>Controlling for group=Experimental</b>				
<b>know_q3a(Financial penalty)</b>	<b>event(Time)</b>			
<b>Frequency Percent Row Pct Col Pct</b>	<b>Pre-survey</b>	<b>Post-survey</b>	<b>Re-test</b>	<b>Total</b>
<b>no</b>	64 8.54 57.66 17.02	47 6.28 42.34 12.60	0 0.00 0.00 .	111 14.82
<b>YES</b>	184 24.57 37.32 48.94	309 41.26 62.68 82.84	0 0.00 0.00 .	493 65.82
<b>Unsure</b>	128 17.09 88.28 34.04	17 2.27 11.72 4.56	0 0.00 0.00 .	145 19.36
<b>Total</b>	376 50.20	373 49.80	0 0.00	749 100.00
<b>Frequency Missing = 1</b>				

Knowledge Question 3a correct				
know_q3a_correct	Frequency	Percent	Cumulative Frequency	Cumulative Percent
no	710	38.25	710	38.25
YES	1146	61.75	1856	100.00
Frequency Missing = 1				

Table 1 of know_q3a_correct by event				
Controlling for group=Control				
know_q3a_correct(Knowledge Question 3a correct)	event(Time)			
Frequency Percent Row Pct Col Pct	Pre-survey	Post-survey	Re-test	Total
no	206 18.61 45.37 55.53	49 4.43 10.79 13.42	199 17.98 43.83 53.64	454 41.01
YES	165 14.91 25.27 44.47	316 28.55 48.39 86.58	172 15.54 26.34 46.36	653 58.99
Total	371 33.51	365 32.97	371 33.51	1107 100.00

Table 2 of know_q3a_correct by event				
Controlling for group=Experimental				
know_q3a_correct(Knowledge Question 3a correct)	event(Time)			
Frequency Percent Row Pct Col Pct	Pre-survey	Post-survey	Re-test	Total
no	192 25.63 75.00 51.06	64 8.54 25.00 17.16	0 0.00 0.00 .	256 34.18
YES	184 24.57 37.32 48.94	309 41.26 62.68 82.84	0 0.00 0.00 .	493 65.82
Total	376 50.20	373 49.80	0 0.00	749 100.00
Frequency Missing = 1				

<b>Loss of professional license</b>				
<b>know_q3b</b>	<b>Frequency</b>	<b>Percent</b>	<b>Cumulative Frequency</b>	<b>Cumulative Percent</b>
<b>no</b>	68	3.66	68	3.66
<b>YES</b>	1596	85.99	1664	89.66
<b>Unsure</b>	192	10.34	1856	100.00
<b>Frequency Missing = 1</b>				

<b>Table 1 of know_q3b by event</b>				
<b>Controlling for group=Control</b>				
<b>know_q3b(Loss of professional license)</b>	<b>event(Time)</b>			
<b>Frequency Percent Row Pct Col Pct</b>	<b>Pre-survey</b>	<b>Post-survey</b>	<b>Re-test</b>	<b>Total</b>
<b>no</b>	11 0.99 27.50 2.96	14 1.26 35.00 3.84	15 1.36 37.50 4.04	40 3.61
<b>YES</b>	303 27.37 31.93 81.67	343 30.98 36.14 93.97	303 27.37 31.93 81.67	949 85.73
<b>Unsure</b>	57 5.15 48.31 15.36	8 0.72 6.78 2.19	53 4.79 44.92 14.29	118 10.66
<b>Total</b>	371 33.51	365 32.97	371 33.51	1107 100.00

<b>Table 2 of know_q3b by event</b>				
<b>Controlling for group=Experimental</b>				
<b>know_q3b(Loss of professional license)</b>	<b>event(Time)</b>			
<b>Frequency Percent Row Pct Col Pct</b>	<b>Pre-survey</b>	<b>Post-survey</b>	<b>Re-test</b>	<b>Total</b>
<b>no</b>	8 1.07 28.57 2.13	20 2.67 71.43 5.36	0 0.00 0.00 .	28 3.74
<b>YES</b>	303 40.45 46.83 80.59	344 45.93 53.17 92.23	0 0.00 0.00 .	647 86.38
<b>Unsure</b>	65 8.68 87.84 17.29	9 1.20 12.16 2.41	0 0.00 0.00 .	74 9.88
<b>Total</b>	376 50.20	373 49.80	0 0.00	749 100.00
<b>Frequency Missing = 1</b>				

Knowledge Question 3b correct				
know_q3b_correct	Frequency	Percent	Cumulative Frequency	Cumulative Percent
no	260	14.01	260	14.01
YES	1596	85.99	1856	100.00
Frequency Missing = 1				

Table 1 of know_q3b_correct by event				
Controlling for group=Control				
know_q3b_correct(Knowledge Question 3b correct)	event(Time)			
Frequency Percent Row Pct Col Pct	Pre-survey	Post-survey	Re-test	Total
no	68 6.14 43.04 18.33	22 1.99 13.92 6.03	68 6.14 43.04 18.33	158 14.27
YES	303 27.37 31.93 81.67	343 30.98 36.14 93.97	303 27.37 31.93 81.67	949 85.73
Total	371 33.51	365 32.97	371 33.51	1107 100.00

Table 2 of know_q3b_correct by event				
Controlling for group=Experimental				
know_q3b_correct(Knowledge Question 3b correct)	event(Time)			
Frequency Percent Row Pct Col Pct	Pre-survey	Post-survey	Re-test	Total
no	73 9.75 71.57 19.41	29 3.87 28.43 7.77	0 0.00 0.00 .	102 13.62
YES	303 40.45 46.83 80.59	344 45.93 53.17 92.23	0 0.00 0.00 .	647 86.38
Total	376 50.20	373 49.80	0 0.00	749 100.00
Frequency Missing = 1				

<b>Incarceration</b>				
<b>know_q3c</b>	<b>Frequency</b>	<b>Percent</b>	<b>Cumulative Frequency</b>	<b>Cumulative Percent</b>
<b>no</b>	269	14.49	269	14.49
<b>YES</b>	1153	62.12	1422	76.62
<b>Unsure</b>	434	23.38	1856	100.00
<b>Frequency Missing = 1</b>				

<b>Table 1 of know_q3c by event</b>				
<b>Controlling for group=Control</b>				
<b>know_q3c(Incarceration)</b>	<b>event(Time)</b>			
<b>Frequency Percent Row Pct Col Pct</b>	<b>Pre-survey</b>	<b>Post-survey</b>	<b>Re-test</b>	<b>Total</b>
<b>no</b>	62 5.60 38.75 16.71	34 3.07 21.25 9.32	64 5.78 40.00 17.25	160 14.45
<b>YES</b>	177 15.99 26.58 47.71	307 27.73 46.10 84.11	182 16.44 27.33 49.06	666 60.16
<b>Unsure</b>	132 11.92 46.98 35.58	24 2.17 8.54 6.58	125 11.29 44.48 33.69	281 25.38
<b>Total</b>	371 33.51	365 32.97	371 33.51	1107 100.00



<b>Table 2 of know_q3c by event</b>				
<b>Controlling for group=Experimental</b>				
<b>know_q3c(Incarceration)</b>	<b>event(Time)</b>			
<b>Frequency Percent Row Pct Col Pct</b>	<b>Pre-survey</b>	<b>Post-survey</b>	<b>Re-test</b>	<b>Total</b>
<b>no</b>	69 9.21 63.30 18.35	40 5.34 36.70 10.72	0 0.00 0.00 .	109 14.55
<b>YES</b>	170 22.70 34.91 45.21	317 42.32 65.09 84.99	0 0.00 0.00 .	487 65.02
<b>Unsure</b>	137 18.29 89.54 36.44	16 2.14 10.46 4.29	0 0.00 0.00 .	153 20.43
<b>Total</b>	376 50.20	373 49.80	0 0.00	749 100.00
<b>Frequency Missing = 1</b>				

Knowledge Question 3c correct				
know_q3c_correct	Frequency	Percent	Cumulative Frequency	Cumulative Percent
no	703	37.88	703	37.88
YES	1153	62.12	1856	100.00
Frequency Missing = 1				

Table 1 of know_q3c_correct by event				
Controlling for group=Control				
know_q3c_correct(Knowledge Question 3c correct)	event(Time)			
Frequency Percent Row Pct Col Pct	Pre-survey	Post-survey	Re-test	Total
no	194 17.52 43.99 52.29	58 5.24 13.15 15.89	189 17.07 42.86 50.94	441 39.84
YES	177 15.99 26.58 47.71	307 27.73 46.10 84.11	182 16.44 27.33 49.06	666 60.16
Total	371 33.51	365 32.97	371 33.51	1107 100.00

Table 2 of know_q3c_correct by event				
Controlling for group=Experimental				
know_q3c_correct(Knowledge Question 3c correct)	event(Time)			
Frequency Percent Row Pct Col Pct	Pre-survey	Post-survey	Re-test	Total
no	206 27.50 78.63 54.79	56 7.48 21.37 15.01	0 0.00 0.00 .	262 34.98
YES	170 22.70 34.91 45.21	317 42.32 65.09 84.99	0 0.00 0.00 .	487 65.02
Total	376 50.20	373 49.80	0 0.00	749 100.00
Frequency Missing = 1				

<b>Under recently enacted Pennsylvania law, for an act (or failure to act) to count as abuse/neglect, which of the following must be true?</b>				
<b>know_q4</b>	<b>Frequency</b>	<b>Percent</b>	<b>Cumulative Frequency</b>	<b>Cumulative Percent</b>
<b>Any of the above</b>	756	40.73	756	40.73
<b>All of the above</b>	1073	57.81	1829	98.55
<b>None of the above</b>	27	1.45	1856	100.00
<b>Frequency Missing = 1</b>				

<b>Table 1 of know_q4 by event</b>				
<b>Controlling for group=Control</b>				
<b>know_q4(Under recently enacted Pennsylvania law, for an act (or failure to act) to count as abuse/neglect, which of the following must be true?)</b>	<b>event(Time)</b>			
	<b>Pre-survey</b>	<b>Post-survey</b>	<b>Re-test</b>	<b>Total</b>
<b>Frequency Percent Row Pct Col Pct</b>				
<b>Any of the above</b>	148 13.37 31.62 39.89	167 15.09 35.68 45.75	153 13.82 32.69 41.24	468 42.28
<b>All of the above</b>	216 19.51 34.67 58.22	195 17.62 31.30 53.42	212 19.15 34.03 57.14	623 56.28
<b>None of the above</b>	7 0.63 43.75 1.89	3 0.27 18.75 0.82	6 0.54 37.50 1.62	16 1.45
<b>Total</b>	371 33.51	365 32.97	371 33.51	1107 100.00

<b>Table 2 of know_q4 by event</b>				
<b>Controlling for group=Experimental</b>				
<b>know_q4(Under recently enacted Pennsylvania law, for an act (or failure to act) to count as abuse/neglect, which of the following must be true?)</b>	<b>event(Time)</b>			
<b>Frequency Percent Row Pct Col Pct</b>	<b>Pre-survey</b>	<b>Post-survey</b>	<b>Re-test</b>	<b>Total</b>
<b>Any of the above</b>	135 18.02 46.88 35.90	153 20.43 53.13 41.02	0 0.00 0.00 .	288 38.45
<b>All of the above</b>	235 31.38 52.22 62.50	215 28.70 47.78 57.64	0 0.00 0.00 .	450 60.08
<b>None of the above</b>	6 0.80 54.55 1.60	5 0.67 45.45 1.34	0 0.00 0.00 .	11 1.47
<b>Total</b>	376 50.20	373 49.80	0 0.00	749 100.00
<b>Frequency Missing = 1</b>				

<b>Knowledge Question 4 correct</b>				
<b>know_q4_correct</b>	<b>Frequency</b>	<b>Percent</b>	<b>Cumulative Frequency</b>	<b>Cumulative Percent</b>
<b>no</b>	1100	59.27	1100	59.27
<b>YES</b>	756	40.73	1856	100.00
<b>Frequency Missing = 1</b>				

<b>Table 1 of know_q4_correct by event</b>				
<b>Controlling for group=Control</b>				
<b>know_q4_correct(Knowledge Question 4 correct)</b>	<b>event(Time)</b>			
<b>Frequency Percent Row Pct Col Pct</b>	<b>Pre-survey</b>	<b>Post-survey</b>	<b>Re-test</b>	<b>Total</b>
<b>no</b>	223 20.14 34.90 60.11	198 17.89 30.99 54.25	218 19.69 34.12 58.76	639 57.72
<b>YES</b>	148 13.37 31.62 39.89	167 15.09 35.68 45.75	153 13.82 32.69 41.24	468 42.28
<b>Total</b>	371 33.51	365 32.97	371 33.51	1107 100.00

<b>Table 2 of know_q4_correct by event</b>				
<b>Controlling for group=Experimental</b>				
<b>know_q4_correct(Knowledge Question 4 correct)</b>	<b>event(Time)</b>			
<b>Frequency Percent Row Pct Col Pct</b>	<b>Pre-survey</b>	<b>Post-survey</b>	<b>Re-test</b>	<b>Total</b>
<b>no</b>	241 32.18 52.28 64.10	220 29.37 47.72 58.98	0 0.00 0.00 .	461 61.55
<b>YES</b>	135 18.02 46.88 35.90	153 20.43 53.13 41.02	0 0.00 0.00 .	288 38.45
<b>Total</b>	376 50.20	373 49.80	0 0.00	749 100.00
<b>Frequency Missing = 1</b>				

<b>Under Pennsylvania law, you can be held legally liable if you suspect child abuse/neglect and report it, but it turns out to be unfounded.</b>				
<b>know_q5</b>	<b>Frequency</b>	<b>Percent</b>	<b>Cumulative Frequency</b>	<b>Cumulative Percent</b>
<b>True</b>	205	11.05	205	11.05
<b>False</b>	1319	71.07	1524	82.11
<b>I am unsure</b>	332	17.89	1856	100.00
<b>Frequency Missing = 1</b>				

<b>Table 1 of know_q5 by event</b>				
<b>Controlling for group=Control</b>				
<b>know_q5(Under Pennsylvania law, you can be held legally liable if you suspect child abuse/neglect and report it, but it turns out to be unfounded.)</b>	<b>event(Time)</b>			
	<b>Pre-survey</b>	<b>Post-survey</b>	<b>Re-test</b>	<b>Total</b>
<b>Frequency</b>				
<b>Percent</b>				
<b>Row Pct</b>				
<b>Col Pct</b>				
<b>True</b>	28	59	42	129
	2.53	5.33	3.79	11.65
	21.71	45.74	32.56	
	7.55	16.16	11.32	
<b>False</b>	236	294	233	763
	21.32	26.56	21.05	68.93
	30.93	38.53	30.54	
	63.61	80.55	62.80	
<b>I am unsure</b>	107	12	96	215
	9.67	1.08	8.67	19.42
	49.77	5.58	44.65	
	28.84	3.29	25.88	
<b>Total</b>	371	365	371	1107
	33.51	32.97	33.51	100.00

<b>Table 2 of know_q5 by event</b>				
<b>Controlling for group=Experimental</b>				
<b>know_q5(Under Pennsylvania law, you can be held legally liable if you suspect child abuse/neglect and report it, but it turns out to be unfounded.)</b>	<b>event(Time)</b>			
	<b>Pre-survey</b>	<b>Post-survey</b>	<b>Re-test</b>	<b>Total</b>
<b>Frequency Percent Row Pct Col Pct</b>				
<b>True</b>	28 3.74 36.84 7.45	48 6.41 63.16 12.87	0 0.00 0.00 .	76 10.15
<b>False</b>	242 32.31 43.53 64.36	314 41.92 56.47 84.18	0 0.00 0.00 .	556 74.23
<b>I am unsure</b>	106 14.15 90.60 28.19	11 1.47 9.40 2.95	0 0.00 0.00 .	117 15.62
<b>Total</b>	376 50.20	373 49.80	0 0.00	749 100.00
<b>Frequency Missing = 1</b>				

<b>Knowledge Question 5 correct</b>				
<b>know_q5_correct</b>	<b>Frequency</b>	<b>Percent</b>	<b>Cumulative Frequency</b>	<b>Cumulative Percent</b>
<b>no</b>	537	28.93	537	28.93
<b>YES</b>	1319	71.07	1856	100.00
<b>Frequency Missing = 1</b>				

<b>Table 1 of know_q5_correct by event</b>				
<b>Controlling for group=Control</b>				
<b>know_q5_correct(Knowledge Question 5 correct)</b>	<b>event(Time)</b>			
<b>Frequency Percent Row Pct Col Pct</b>	<b>Pre-survey</b>	<b>Post-survey</b>	<b>Re-test</b>	<b>Total</b>
<b>no</b>	135 12.20 39.24 36.39	71 6.41 20.64 19.45	138 12.47 40.12 37.20	344 31.07
<b>YES</b>	236 21.32 30.93 63.61	294 26.56 38.53 80.55	233 21.05 30.54 62.80	763 68.93
<b>Total</b>	371 33.51	365 32.97	371 33.51	1107 100.00

<b>Table 2 of know_q5_correct by event</b>				
<b>Controlling for group=Experimental</b>				
<b>know_q5_correct(Knowledge Question 5 correct)</b>	<b>event(Time)</b>			
<b>Frequency Percent Row Pct Col Pct</b>	<b>Pre-survey</b>	<b>Post-survey</b>	<b>Re-test</b>	<b>Total</b>
<b>no</b>	134 17.89 69.43 35.64	59 7.88 30.57 15.82	0 0.00 0.00 .	193 25.77
<b>YES</b>	242 32.31 43.53 64.36	314 41.92 56.47 84.18	0 0.00 0.00 .	556 74.23
<b>Total</b>	376 50.20	373 49.80	0 0.00	749 100.00
<b>Frequency Missing = 1</b>				



<b>Under Pennsylvania law, once you have reasonable cause to suspect child abuse/neglect, you must report your suspicion to authorities:</b>				
<b>know_q6</b>	<b>Frequency</b>	<b>Percent</b>	<b>Cumulative Frequency</b>	<b>Cumulative Percent</b>
<b>Within a day</b>	269	14.49	269	14.49
<b>Within 48 hours</b>	248	13.36	517	27.86
<b>Within 72 hours</b>	34	1.83	551	29.69
<b>Immediately</b>	1093	58.89	1644	88.58
<b>Within a week</b>	9	0.48	1653	89.06
<b>I am unsure</b>	203	10.94	1856	100.00
<b>Frequency Missing = 1</b>				

<b>Table 1 of know_q6 by event</b>				
<b>Controlling for group=Control</b>				
<b>know_q6(Under Pennsylvania law, once you have reasonable cause to suspect child abuse/neglect, you must report your suspicion to authorities:)</b>	<b>event(Time)</b>			
	<b>Pre-survey</b>	<b>Post-survey</b>	<b>Re-test</b>	<b>Total</b>
<b>Frequency Percent Row Pct Col Pct</b>				
<b>Within a day</b>	53 4.79 31.93 14.29	49 4.43 29.52 13.42	64 5.78 38.55 17.25	166 15.00
<b>Within 48 hours</b>	64 5.78 42.38 17.25	26 2.35 17.22 7.12	61 5.51 40.40 16.44	151 13.64
<b>Within 72 hours</b>	5 0.45 29.41 1.35	5 0.45 29.41 1.37	7 0.63 41.18 1.89	17 1.54
<b>Immediately</b>	196 17.71 31.41 52.83	273 24.66 43.75 74.79	155 14.00 24.84 41.78	624 56.37
<b>Within a week</b>	0 0.00 0.00 0.00	4 0.36 80.00 1.10	1 0.09 20.00 0.27	5 0.45
<b>I am unsure</b>	53 4.79 36.81 14.29	8 0.72 5.56 2.19	83 7.50 57.64 22.37	144 13.01
<b>Total</b>	371 33.51	365 32.97	371 33.51	1107 100.00

<b>Table 2 of know_q6 by event</b>				
<b>Controlling for group=Experimental</b>				
<b>know_q6(Under Pennsylvania law, once you have reasonable cause to suspect child abuse/neglect, you must report your suspicion to authorities:)</b>	<b>event(Time)</b>			
	<b>Pre-survey</b>	<b>Post-survey</b>	<b>Re-test</b>	<b>Total</b>
<b>Frequency Percent Row Pct Col Pct</b>				
<b>Within a day</b>	48 6.41 46.60 12.77	55 7.34 53.40 14.75	0 0.00 0.00 .	103 13.75
<b>Within 48 hours</b>	57 7.61 58.76 15.16	40 5.34 41.24 10.72	0 0.00 0.00 .	97 12.95
<b>Within 72 hours</b>	14 1.87 82.35 3.72	3 0.40 17.65 0.80	0 0.00 0.00 .	17 2.27
<b>Immediately</b>	205 27.37 43.71 54.52	264 35.25 56.29 70.78	0 0.00 0.00 .	469 62.62
<b>Within a week</b>	2 0.27 50.00 0.53	2 0.27 50.00 0.54	0 0.00 0.00 .	4 0.53
<b>I am unsure</b>	50 6.68 84.75 13.30	9 1.20 15.25 2.41	0 0.00 0.00 .	59 7.88
<b>Total</b>	376 50.20	373 49.80	0 0.00	749 100.00
<b>Frequency Missing = 1</b>				

<b>Knowledge Question 6 correct</b>				
<b>know_q6_correct</b>	<b>Frequency</b>	<b>Percent</b>	<b>Cumulative Frequency</b>	<b>Cumulative Percent</b>
<b>no</b>	763	41.11	763	41.11
<b>YES</b>	1093	58.89	1856	100.00
<b>Frequency Missing = 1</b>				

<b>Table 1 of know_q6_correct by event</b>				
<b>Controlling for group=Control</b>				
<b>know_q6_correct(Knowledge Question 6 correct)</b>	<b>event(Time)</b>			
<b>Frequency Percent Row Pct Col Pct</b>	<b>Pre-survey</b>	<b>Post-survey</b>	<b>Re-test</b>	<b>Total</b>
<b>no</b>	175 15.81 36.23 47.17	92 8.31 19.05 25.21	216 19.51 44.72 58.22	483 43.63
<b>YES</b>	196 17.71 31.41 52.83	273 24.66 43.75 74.79	155 14.00 24.84 41.78	624 56.37
<b>Total</b>	371 33.51	365 32.97	371 33.51	1107 100.00

<b>Table 2 of know_q6_correct by event</b>				
<b>Controlling for group=Experimental</b>				
<b>know_q6_correct(Knowledge Question 6 correct)</b>	<b>event(Time)</b>			
<b>Frequency Percent Row Pct Col Pct</b>	<b>Pre-survey</b>	<b>Post-survey</b>	<b>Re-test</b>	<b>Total</b>
<b>no</b>	171 22.83 61.07 45.48	109 14.55 38.93 29.22	0 0.00 0.00 .	280 37.38
<b>YES</b>	205 27.37 43.71 54.52	264 35.25 56.29 70.78	0 0.00 0.00 .	469 62.62
<b>Total</b>	376 50.20	373 49.80	0 0.00	749 100.00
<b>Frequency Missing = 1</b>				

<b>Under Pennsylvania law, you must report:</b>				
<b>know_q7</b>	<b>Frequency</b>	<b>Percent</b>	<b>Cumulative Frequency</b>	<b>Cumulative Percent</b>
<b>Whenever I think it is possible that a child has been abused/neglected</b>	247	13.31	247	13.31
<b>Only when I am certain that a child has been abused/neglected</b>	76	4.09	323	17.40
<b>Whenever I have reasonable cause to suspect that a child has been abused/neglected</b>	1472	79.31	1795	96.71
<b>Only if I think it is more likely than not that a child has been abused/neglected</b>	18	0.97	1813	97.68
<b>I am unsure</b>	43	2.32	1856	100.00
<b>Frequency Missing = 1</b>				

<b>Table 1 of know_q7 by event</b>				
<b>Controlling for group=Control</b>				
<b>know_q7(Under Pennsylvania law, you must report:)</b>	<b>event(Time)</b>			
<b>Frequency Percent Row Pct Col Pct</b>	<b>Pre-survey</b>	<b>Post-survey</b>	<b>Re-test</b>	<b>Total</b>
<b>Whenever I think it is possible that a child has been abused/neglected</b>	55 4.97 37.67 14.82	27 2.44 18.49 7.40	64 5.78 43.84 17.25	146 13.19
<b>Only when I am certain that a child has been abused/neglected</b>	21 1.90 42.00 5.66	8 0.72 16.00 2.19	21 1.90 42.00 5.66	50 4.52
<b>Whenever I have reasonable cause to suspect that a child has been abused/neglected</b>	273 24.66 31.24 73.58	327 29.54 37.41 89.59	274 24.75 31.35 73.85	874 78.95
<b>Only if I think it is more likely than not that a child has been abused/neglected</b>	2 0.18 33.33 0.54	2 0.18 33.33 0.55	2 0.18 33.33 0.54	6 0.54
<b>I am unsure</b>	20 1.81 64.52 5.39	1 0.09 3.23 0.27	10 0.90 32.26 2.70	31 2.80
<b>Total</b>	371 33.51	365 32.97	371 33.51	1107 100.00

Table 2 of know_q7 by event				
Controlling for group=Experimental				
know_q7(Under Pennsylvania law, you must report:)	event(Time)			
Frequency Percent Row Pct Col Pct	Pre-survey	Post-survey	Re-test	Total
<b>Whenever I think it is possible that a child has been abused/neglected</b>	57 7.61 56.44 15.16	44 5.87 43.56 11.80	0 0.00 0.00 .	101 13.48
<b>Only when I am certain that a child has been abused/neglected</b>	18 2.40 69.23 4.79	8 1.07 30.77 2.14	0 0.00 0.00 .	26 3.47
<b>Whenever I have reasonable cause to suspect that a child has been abused/neglected</b>	283 37.78 47.32 75.27	315 42.06 52.68 84.45	0 0.00 0.00 .	598 79.84
<b>Only if I think it is more likely than not that a child has been abused/neglected</b>	6 0.80 50.00 1.60	6 0.80 50.00 1.61	0 0.00 0.00 .	12 1.60
<b>I am unsure</b>	12 1.60 100.00 3.19	0 0.00 0.00 0.00	0 0.00 0.00 .	12 1.60
<b>Total</b>	376 50.20	373 49.80	0 0.00	749 100.00
<b>Frequency Missing = 1</b>				

Knowledge Question 7 correct				
know_q7_correct	Frequency	Percent	Cumulative Frequency	Cumulative Percent
no	384	20.69	384	20.69
YES	1472	79.31	1856	100.00
Frequency Missing = 1				

Table 1 of know_q7_correct by event				
Controlling for group=Control				
know_q7_correct(Knowledge Question 7 correct)	event(Time)			
Frequency Percent Row Pct Col Pct	Pre-survey	Post-survey	Re-test	Total
no	98 8.85 42.06 26.42	38 3.43 16.31 10.41	97 8.76 41.63 26.15	233 21.05
YES	273 24.66 31.24 73.58	327 29.54 37.41 89.59	274 24.75 31.35 73.85	874 78.95
Total	371 33.51	365 32.97	371 33.51	1107 100.00

Table 2 of know_q7_correct by event				
Controlling for group=Experimental				
know_q7_correct(Knowledge Question 7 correct)	event(Time)			
Frequency Percent Row Pct Col Pct	Pre-survey	Post-survey	Re-test	Total
no	93 12.42 61.59 24.73	58 7.74 38.41 15.55	0 0.00 0.00 .	151 20.16
YES	283 37.78 47.32 75.27	315 42.06 52.68 84.45	0 0.00 0.00 .	598 79.84
Total	376 50.20	373 49.80	0 0.00	749 100.00
Frequency Missing = 1				

<b>According to newly enacted Pennsylvania law, you are required to report suspected child abuse/neglect to:</b>				
<b>know_q8</b>	<b>Frequency</b>	<b>Percent</b>	<b>Cumulative Frequency</b>	<b>Cumulative Percent</b>
<b>The police</b>	108	5.82	108	5.82
<b>ChildLine only</b>	576	31.03	684	36.85
<b>My supervisor only</b>	55	2.96	739	39.82
<b>Both ChildLine and my supervisor</b>	981	52.86	1720	92.67
<b>I am unsure</b>	136	7.33	1856	100.00
<b>Frequency Missing = 1</b>				

<b>Table 1 of know_q8 by event</b>				
<b>Controlling for group=Control</b>				
<b>know_q8(According to newly enacted Pennsylvania law, you are required to report suspected child abuse/neglect to:)</b>	<b>event(Time)</b>			
<b>Frequency Percent Row Pct Col Pct</b>	<b>Pre-survey</b>	<b>Post-survey</b>	<b>Re-test</b>	<b>Total</b>
<b>The police</b>	29 2.62 40.28 7.82	13 1.17 18.06 3.56	30 2.71 41.67 8.09	72 6.50
<b>ChildLine only</b>	115 10.39 31.51 31.00	135 12.20 36.99 36.99	115 10.39 31.51 31.00	365 32.97
<b>My supervisor only</b>	15 1.36 45.45 4.04	5 0.45 15.15 1.37	13 1.17 39.39 3.50	33 2.98
<b>Both ChildLine and my supervisor</b>	169 15.27 30.90 45.55	207 18.70 37.84 56.71	171 15.45 31.26 46.09	547 49.41
<b>I am unsure</b>	43 3.88 47.78 11.59	5 0.45 5.56 1.37	42 3.79 46.67 11.32	90 8.13
<b>Total</b>	371 33.51	365 32.97	371 33.51	1107 100.00



<b>Table 2 of know_q8 by event</b>				
<b>Controlling for group=Experimental</b>				
<b>know_q8(According to newly enacted Pennsylvania law, you are required to report suspected child abuse/neglect to:)</b>	<b>event(Time)</b>			
<b>Frequency Percent Row Pct Col Pct</b>	<b>Pre-survey</b>	<b>Post-survey</b>	<b>Re-test</b>	<b>Total</b>
<b>The police</b>	25 3.34 69.44 6.65	11 1.47 30.56 2.95	0 0.00 0.00 .	36 4.81
<b>ChildLine only</b>	85 11.35 40.28 22.61	126 16.82 59.72 33.78	0 0.00 0.00 .	211 28.17
<b>My supervisor only</b>	19 2.54 86.36 5.05	3 0.40 13.64 0.80	0 0.00 0.00 .	22 2.94
<b>Both ChildLine and my supervisor</b>	203 27.10 46.77 53.99	231 30.84 53.23 61.93	0 0.00 0.00 .	434 57.94
<b>I am unsure</b>	44 5.87 95.65 11.70	2 0.27 4.35 0.54	0 0.00 0.00 .	46 6.14
<b>Total</b>	376 50.20	373 49.80	0 0.00	749 100.00
<b>Frequency Missing = 1</b>				

Knowledge Question 8 correct				
know_q8_correct	Frequency	Percent	Cumulative Frequency	Cumulative Percent
no	875	47.14	875	47.14
YES	981	52.86	1856	100.00
Frequency Missing = 1				

Table 1 of know_q8_correct by event				
Controlling for group=Control				
know_q8_correct(Knowledge Question 8 correct)	event(Time)			
Frequency Percent Row Pct Col Pct	Pre-survey	Post-survey	Re-test	Total
no	202 18.25 36.07 54.45	158 14.27 28.21 43.29	200 18.07 35.71 53.91	560 50.59
YES	169 15.27 30.90 45.55	207 18.70 37.84 56.71	171 15.45 31.26 46.09	547 49.41
Total	371 33.51	365 32.97	371 33.51	1107 100.00

Table 2 of know_q8_correct by event				
Controlling for group=Experimental				
know_q8_correct(Knowledge Question 8 correct)	event(Time)			
Frequency Percent Row Pct Col Pct	Pre-survey	Post-survey	Re-test	Total
no	173 23.10 54.92 46.01	142 18.96 45.08 38.07	0 0.00 0.00 .	315 42.06
YES	203 27.10 46.77 53.99	231 30.84 53.23 61.93	0 0.00 0.00 .	434 57.94
Total	376 50.20	373 49.80	0 0.00	749 100.00
Frequency Missing = 1				

<b>To count as physical child abuse, it must result in a child experiencing:</b>				
<b>know_q9</b>	<b>Frequency</b>	<b>Percent</b>	<b>Cumulative Frequency</b>	<b>Cumulative Percent</b>
<b>Severe pain</b>	37	4.95	37	4.95
<b>Any pain</b>	407	54.48	444	59.44
<b>Substantial pain</b>	119	15.93	563	75.37
<b>Long-lasting pain</b>	43	5.76	606	81.12
<b>I am unsure</b>	141	18.88	747	100.00
<b>Frequency Missing = 1110</b>				

<b>Table 1 of know_q9 by event</b>				
<b>Controlling for group=Control</b>				
<b>know_q9(To count as physical child abuse, it must result in a child experiencing:)</b>	<b>event(Time)</b>			
<b>Frequency Percent Row Pct Col Pct</b>	<b>Pre-survey</b>	<b>Post-survey</b>	<b>Re-test</b>	<b>Total</b>
<b>Severe pain</b>	10 2.70 100.00 2.70	0 0.00 0.00 .	0 0.00 0.00 .	10 2.70
<b>Any pain</b>	203 54.72 100.00 54.72	0 0.00 0.00 .	0 0.00 0.00 .	203 54.72
<b>Substantial pain</b>	62 16.71 100.00 16.71	0 0.00 0.00 .	0 0.00 0.00 .	62 16.71
<b>Long-lasting pain</b>	25 6.74 100.00 6.74	0 0.00 0.00 .	0 0.00 0.00 .	25 6.74
<b>I am unsure</b>	71 19.14 100.00 19.14	0 0.00 0.00 .	0 0.00 0.00 .	71 19.14
<b>Total</b>	371 100.00	0 0.00	0 0.00	371 100.00
<b>Frequency Missing = 736</b>				

<b>Table 2 of know_q9 by event</b>				
<b>Controlling for group=Experimental</b>				
<b>know_q9(To count as physical child abuse, it must result in a child experiencing:)</b>	<b>event(Time)</b>			
<b>Frequency Percent Row Pct Col Pct</b>	<b>Pre-survey</b>	<b>Post-survey</b>	<b>Re-test</b>	<b>Total</b>
<b>Severe pain</b>	27 7.18 100.00 7.18	0 0.00 0.00 .	0 0.00 0.00 .	27 7.18
<b>Any pain</b>	204 54.26 100.00 54.26	0 0.00 0.00 .	0 0.00 0.00 .	204 54.26
<b>Substantial pain</b>	57 15.16 100.00 15.16	0 0.00 0.00 .	0 0.00 0.00 .	57 15.16
<b>Long-lasting pain</b>	18 4.79 100.00 4.79	0 0.00 0.00 .	0 0.00 0.00 .	18 4.79
<b>I am unsure</b>	70 18.62 100.00 18.62	0 0.00 0.00 .	0 0.00 0.00 .	70 18.62
<b>Total</b>	376 100.00	0 0.00	0 0.00	376 100.00
<b>Frequency Missing = 374</b>				

<b>Knowledge Question 9 correct</b>				
<b>know_q9_correct</b>	<b>Frequency</b>	<b>Percent</b>	<b>Cumulative Frequency</b>	<b>Cumulative Percent</b>
<b>no</b>	628	84.07	628	84.07
<b>YES</b>	119	15.93	747	100.00
<b>Frequency Missing = 1110</b>				

<b>Table 1 of know_q9_correct by event</b>				
<b>Controlling for group=Control</b>				
<b>know_q9_correct(Knowledge Question 9 correct)</b>	<b>event(Time)</b>			
<b>Frequency Percent Row Pct Col Pct</b>	<b>Pre-survey</b>	<b>Post-survey</b>	<b>Re-test</b>	<b>Total</b>
<b>no</b>	309 83.29 100.00 83.29	0 0.00 0.00 .	0 0.00 0.00 .	309 83.29
<b>YES</b>	62 16.71 100.00 16.71	0 0.00 0.00 .	0 0.00 0.00 .	62 16.71
<b>Total</b>	371 100.00	0 0.00	0 0.00	371 100.00
<b>Frequency Missing = 736</b>				

<b>Table 2 of know_q9_correct by event</b>				
<b>Controlling for group=Experimental</b>				
<b>know_q9_correct(Knowledge Question 9 correct)</b>	<b>event(Time)</b>			
<b>Frequency Percent Row Pct Col Pct</b>	<b>Pre-survey</b>	<b>Post-survey</b>	<b>Re-test</b>	<b>Total</b>
<b>no</b>	319 84.84 100.00 84.84	0 0.00 0.00 .	0 0.00 0.00 .	319 84.84
<b>YES</b>	57 15.16 100.00 15.16	0 0.00 0.00 .	0 0.00 0.00 .	57 15.16
<b>Total</b>	376 100.00	0 0.00	0 0.00	376 100.00
<b>Frequency Missing = 374</b>				

<b>Under Pennsylvania law, are you required to report suspected child abuse/neglect if a child was put at significant risk for being injured even when no injury or harm actually occurred?</b>				
<b>know_q10</b>	<b>Frequency</b>	<b>Percent</b>	<b>Cumulative Frequency</b>	<b>Cumulative Percent</b>
<b>no</b>	54	2.91	54	2.91
<b>YES</b>	1538	82.87	1592	85.78
<b>Unsure</b>	264	14.22	1856	100.00
<b>Frequency Missing = 1</b>				

<b>Table 1 of know_q10 by event</b>				
<b>Controlling for group=Control</b>				
<b>know_q10(Under Pennsylvania law, are you required to report suspected child abuse/neglect if a child was put at significant risk for being injured even when no injury or harm actually occurred?)</b>	<b>event(Time)</b>			
	<b>Pre-survey</b>	<b>Post-survey</b>	<b>Re-test</b>	<b>Total</b>
<b>Frequency Percent Row Pct Col Pct</b>				
<b>no</b>	23 2.08 58.97 6.20	9 0.81 23.08 2.47	7 0.63 17.95 1.89	39 3.52
<b>YES</b>	264 23.85 29.50 71.16	349 31.53 38.99 95.62	282 25.47 31.51 76.01	895 80.85
<b>Unsure</b>	84 7.59 48.55 22.64	7 0.63 4.05 1.92	82 7.41 47.40 22.10	173 15.63
<b>Total</b>	371 33.51	365 32.97	371 33.51	1107 100.00

<b>Table 2 of know_q10 by event</b>				
<b>Controlling for group=Experimental</b>				
<b>know_q10(Under Pennsylvania law, are you required to report suspected child abuse/neglect if a child was put at significant risk for being injured even when no injury or harm actually occurred?)</b>	<b>event(Time)</b>			
	<b>Pre-survey</b>	<b>Post-survey</b>	<b>Re-test</b>	<b>Total</b>
<b>Frequency Percent Row Pct Col Pct</b>				
<b>no</b>	10 1.34 66.67 2.66	5 0.67 33.33 1.34	0 0.00 0.00 .	15 2.00
<b>YES</b>	278 37.12 43.23 73.94	365 48.73 56.77 97.86	0 0.00 0.00 .	643 85.85
<b>Unsure</b>	88 11.75 96.70 23.40	3 0.40 3.30 0.80	0 0.00 0.00 .	91 12.15
<b>Total</b>	376 50.20	373 49.80	0 0.00	749 100.00
<b>Frequency Missing = 1</b>				

<b>Knowledge Question 10 correct</b>				
<b>know_q10_correct</b>	<b>Frequency</b>	<b>Percent</b>	<b>Cumulative Frequency</b>	<b>Cumulative Percent</b>
<b>no</b>	318	17.13	318	17.13
<b>YES</b>	1538	82.87	1856	100.00
<b>Frequency Missing = 1</b>				

<b>Table 1 of know_q10_correct by event</b>				
<b>Controlling for group=Control</b>				
<b>know_q10_correct(Knowledge Question 10 correct)</b>	<b>event(Time)</b>			
<b>Frequency Percent Row Pct Col Pct</b>	<b>Pre-survey</b>	<b>Post-survey</b>	<b>Re-test</b>	<b>Total</b>
<b>no</b>	107 9.67 50.47 28.84	16 1.45 7.55 4.38	89 8.04 41.98 23.99	212 19.15
<b>YES</b>	264 23.85 29.50 71.16	349 31.53 38.99 95.62	282 25.47 31.51 76.01	895 80.85
<b>Total</b>	371 33.51	365 32.97	371 33.51	1107 100.00

<b>Table 2 of know_q10_correct by event</b>				
<b>Controlling for group=Experimental</b>				
<b>know_q10_correct(Knowledge Question 10 correct)</b>	<b>event(Time)</b>			
<b>Frequency Percent Row Pct Col Pct</b>	<b>Pre-survey</b>	<b>Post-survey</b>	<b>Re-test</b>	<b>Total</b>
<b>no</b>	98 13.08 92.45 26.06	8 1.07 7.55 2.14	0 0.00 0.00 .	106 14.15
<b>YES</b>	278 37.12 43.23 73.94	365 48.73 56.77 97.86	0 0.00 0.00 .	643 85.85
<b>Total</b>	376 50.20	373 49.80	0 0.00	749 100.00
<b>Frequency Missing = 1</b>				



<b>Requirements for reporting suspected child abuse/neglect refer to recent events. How long ago counts as recent under Pennsylvania law?</b>				
<b>know_q11</b>	<b>Frequency</b>	<b>Percent</b>	<b>Cumulative Frequency</b>	<b>Cumulative Percent</b>
<b>1 day</b>	95	12.72	95	12.72
<b>1 week</b>	90	12.05	185	24.77
<b>1 month</b>	81	10.84	266	35.61
<b>1 year</b>	41	5.49	307	41.10
<b>2 years</b>	54	7.23	361	48.33
<b>I am unsure</b>	386	51.67	747	100.00
<b>Frequency Missing = 1110</b>				

<b>Table 1 of know_q11 by event</b>				
<b>Controlling for group=Control</b>				
<b>know_q11(Requirements for reporting suspected child abuse/neglect refer to recent events. How long ago counts as recent under Pennsylvania law?)</b>	<b>event(Time)</b>			
<b>Frequency Percent Row Pct Col Pct</b>	<b>Pre-survey</b>	<b>Post-survey</b>	<b>Re-test</b>	<b>Total</b>
<b>1 day</b>	43 11.59 100.00 11.59	0 0.00 0.00 .	0 0.00 0.00 .	43 11.59
<b>1 week</b>	39 10.51 100.00 10.51	0 0.00 0.00 .	0 0.00 0.00 .	39 10.51
<b>1 month</b>	38 10.24 100.00 10.24	0 0.00 0.00 .	0 0.00 0.00 .	38 10.24
<b>1 year</b>	22 5.93 100.00 5.93	0 0.00 0.00 .	0 0.00 0.00 .	22 5.93
<b>2 years</b>	25 6.74 100.00 6.74	0 0.00 0.00 .	0 0.00 0.00 .	25 6.74
<b>I am unsure</b>	204 54.99 100.00 54.99	0 0.00 0.00 .	0 0.00 0.00 .	204 54.99
<b>Total</b>	371 100.00	0 0.00	0 0.00	371 100.00
<b>Frequency Missing = 736</b>				

<b>Table 2 of know_q11 by event</b>				
<b>Controlling for group=Experimental</b>				
<b>know_q11(Requirements for reporting suspected child abuse/neglect refer to recent events. How long ago counts as recent under Pennsylvania law?)</b>	<b>event(Time)</b>			
<b>Frequency Percent Row Pct Col Pct</b>	<b>Pre-survey</b>	<b>Post-survey</b>	<b>Re-test</b>	<b>Total</b>
<b>1 day</b>	52 13.83 100.00 13.83	0 0.00 0.00 .	0 0.00 0.00 .	52 13.83
<b>1 week</b>	51 13.56 100.00 13.56	0 0.00 0.00 .	0 0.00 0.00 .	51 13.56
<b>1 month</b>	43 11.44 100.00 11.44	0 0.00 0.00 .	0 0.00 0.00 .	43 11.44
<b>1 year</b>	19 5.05 100.00 5.05	0 0.00 0.00 .	0 0.00 0.00 .	19 5.05
<b>2 years</b>	29 7.71 100.00 7.71	0 0.00 0.00 .	0 0.00 0.00 .	29 7.71
<b>I am unsure</b>	182 48.40 100.00 48.40	0 0.00 0.00 .	0 0.00 0.00 .	182 48.40
<b>Total</b>	376 100.00	0 0.00	0 0.00	376 100.00
<b>Frequency Missing = 374</b>				

<b>Knowledge Question 11 correct</b>				
<b>know_q11_correct</b>	<b>Frequency</b>	<b>Percent</b>	<b>Cumulative Frequency</b>	<b>Cumulative Percent</b>
<b>no</b>	693	92.77	693	92.77
<b>YES</b>	54	7.23	747	100.00
<b>Frequency Missing = 1110</b>				

<b>Table 1 of know_q11_correct by event</b>				
<b>Controlling for group=Control</b>				
<b>know_q11_correct(Knowledge Question 11 correct)</b>	<b>event(Time)</b>			
<b>Frequency Percent Row Pct Col Pct</b>	<b>Pre-survey</b>	<b>Post-survey</b>	<b>Re-test</b>	<b>Total</b>
<b>no</b>	346 93.26 100.00 93.26	0 0.00 0.00 .	0 0.00 0.00 .	346 93.26
<b>YES</b>	25 6.74 100.00 6.74	0 0.00 0.00 .	0 0.00 0.00 .	25 6.74
<b>Total</b>	371 100.00	0 0.00	0 0.00	371 100.00
<b>Frequency Missing = 736</b>				

<b>Table 2 of know_q11_correct by event</b>				
<b>Controlling for group=Experimental</b>				
<b>know_q11_correct(Knowledge Question 11 correct)</b>	<b>event(Time)</b>			
<b>Frequency Percent Row Pct Col Pct</b>	<b>Pre-survey</b>	<b>Post-survey</b>	<b>Re-test</b>	<b>Total</b>
<b>no</b>	347 92.29 100.00 92.29	0 0.00 0.00 .	0 0.00 0.00 .	347 92.29
<b>YES</b>	29 7.71 100.00 7.71	0 0.00 0.00 .	0 0.00 0.00 .	29 7.71
<b>Total</b>	376 100.00	0 0.00	0 0.00	376 100.00
<b>Frequency Missing = 374</b>				

<b>Do you feel confident in your ability to identify signs of child abuse/neglect?</b>				
<b>know_q12</b>	<b>Frequency</b>	<b>Percent</b>	<b>Cumulative Frequency</b>	<b>Cumulative Percent</b>
<b>no</b>	60	5.41	60	5.41
<b>YES</b>	1049	94.59	1109	100.00
<b>Frequency Missing = 748</b>				

<b>Table 1 of know_q12 by event</b>				
<b>Controlling for group=Control</b>				
<b>know_q12(Do you feel confident in your ability to identify signs of child abuse/neglect?)</b>	<b>event(Time)</b>			
	<b>Pre-survey</b>	<b>Post-survey</b>	<b>Re-test</b>	<b>Total</b>
<b>Frequency Percent Row Pct Col Pct</b>				
<b>no</b>	0 0.00 0.00 .	3 0.41 5.08 0.82	56 7.61 94.92 15.09	59 8.02
<b>YES</b>	0 0.00 0.00 .	362 49.18 53.47 99.18	315 42.80 46.53 84.91	677 91.98
<b>Total</b>	0 0.00	365 49.59	371 50.41	736 100.00
<b>Frequency Missing = 371</b>				

<b>Table 2 of know_q12 by event</b>				
<b>Controlling for group=Experimental</b>				
<b>know_q12(Do you feel confident in your ability to identify signs of child abuse/neglect?)</b>	<b>event(Time)</b>			
<b>Frequency Percent Row Pct Col Pct</b>	<b>Pre-survey</b>	<b>Post-survey</b>	<b>Re-test</b>	<b>Total</b>
<b>no</b>	0 0.00 0.00 .	1 0.27 100.00 0.27	0 0.00 0.00 .	1 0.27
<b>YES</b>	0 0.00 0.00 .	372 99.73 100.00 99.73	0 0.00 0.00 .	372 99.73
<b>Total</b>	0 0.00	373 100.00	0 0.00	373 100.00
<b>Frequency Missing = 377</b>				

<b>How prepared do you feel to report child abuse/neglect should the need arise?</b>				
<b>know_q13</b>	<b>Frequency</b>	<b>Percent</b>	<b>Cumulative Frequency</b>	<b>Cumulative Percent</b>
<b>Entirely unprepared</b>	12	1.08	12	1.08
<b>Unprepared</b>	11	0.99	23	2.07
<b>Somewhat unprepared</b>	22	1.98	45	4.06
<b>Neither prepared nor unprepared</b>	89	8.03	134	12.08
<b>Somewhat prepared</b>	146	13.17	280	25.25
<b>Prepared</b>	394	35.53	674	60.78
<b>Very well prepared</b>	435	39.22	1109	100.00
<b>Frequency Missing = 748</b>				

<b>Table 1 of know_q13 by event</b>				
<b>Controlling for group=Control</b>				
<b>know_q13(How prepared do you feel to report child abuse/neglect should the need arise?)</b>	<b>event(Time)</b>			
<b>Frequency Percent Row Pct Col Pct</b>	<b>Pre-survey</b>	<b>Post-survey</b>	<b>Re-test</b>	<b>Total</b>
<b>Entirely unprepared</b>	0 0.00 0.00 .	5 0.68 41.67 1.37	7 0.95 58.33 1.89	12 1.63
<b>Unprepared</b>	0 0.00 0.00 .	0 0.00 0.00 0.00	10 1.36 100.00 2.70	10 1.36
<b>Somewhat unprepared</b>	0 0.00 0.00 .	0 0.00 0.00 0.00	21 2.85 100.00 5.66	21 2.85
<b>Neither prepared nor unprepared</b>	0 0.00 0.00 .	10 1.36 12.66 2.74	69 9.38 87.34 18.60	79 10.73
<b>Somewhat prepared</b>	0 0.00 0.00 .	29 3.94 28.43 7.95	73 9.92 71.57 19.68	102 13.86
<b>Prepared</b>	0 0.00 0.00 .	122 16.58 52.59 33.42	110 14.95 47.41 29.65	232 31.52
<b>Very well prepared</b>	0 0.00 0.00 .	199 27.04 71.07 54.52	81 11.01 28.93 21.83	280 38.04
<b>Total</b>	0 0.00	365 49.59	371 50.41	736 100.00
<b>Frequency Missing = 371</b>				



<b>Table 2 of know_q13 by event</b>				
<b>Controlling for group=Experimental</b>				
<b>know_q13(How prepared do you feel to report child abuse/neglect should the need arise?)</b>	<b>event(Time)</b>			
<b>Frequency Percent Row Pct Col Pct</b>	<b>Pre-survey</b>	<b>Post-survey</b>	<b>Re-test</b>	<b>Total</b>
<b>Entirely unprepared</b>	0 0.00 . .	0 0.00 . 0.00	0 0.00 . .	0 0.00 . .
<b>Unprepared</b>	0 0.00 0.00 .	1 0.27 100.00 0.27	0 0.00 0.00 .	1 0.27 . .
<b>Somewhat unprepared</b>	0 0.00 0.00 .	1 0.27 100.00 0.27	0 0.00 0.00 .	1 0.27 . .
<b>Neither prepared nor unprepared</b>	0 0.00 0.00 .	10 2.68 100.00 2.68	0 0.00 0.00 .	10 2.68 . .
<b>Somewhat prepared</b>	0 0.00 0.00 .	44 11.80 100.00 11.80	0 0.00 0.00 .	44 11.80 . .
<b>Prepared</b>	0 0.00 0.00 .	162 43.43 100.00 43.43	0 0.00 0.00 .	162 43.43 . .
<b>Very well prepared</b>	0 0.00 0.00 .	155 41.55 100.00 41.55	0 0.00 0.00 .	155 41.55 . .
<b>Total</b>	0 0.00	373 100.00	0 0.00	373 100.00
<b>Frequency Missing = 377</b>				