



Figure S1 Screening of *Y. lipolytica* expressing EGs on indication plate containing YNBcasa medium supplemented with 0.2% w/v Azo-CM-Cellulose.

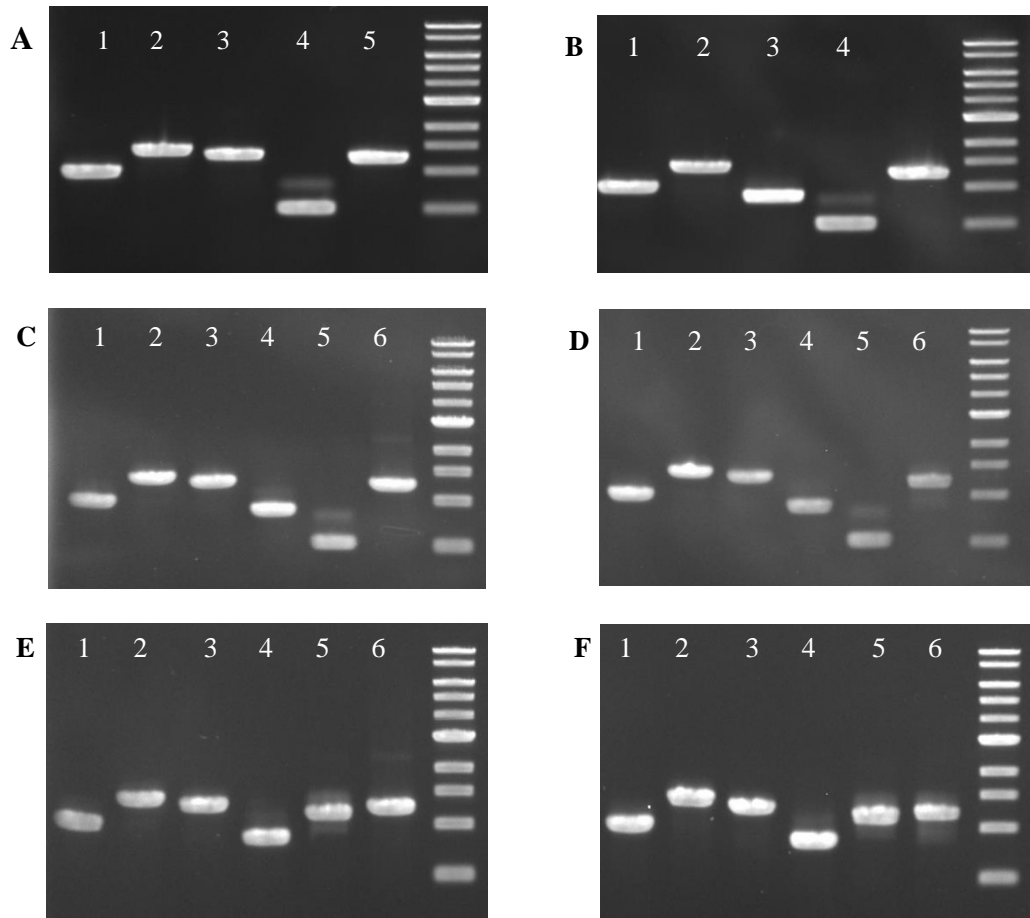


Figure S2 PCR verification of *Y. lipolytica* transformants expressing multiple cellulases (A) YLC1, Lane 1, 2, 3, 4, 5: *BGL1*, *BGL2*, *TrEGI*, *NcCBHI*, *TrCBHII*; (B) YLC2, Lane 1, 2, 3, 4, 5: *BGL1*, *BGL2*, *TrEGII*, *NcCBHI*, *TrCBHII*; (C) YLC3, Lane 1, 2, 3, 4, 5, 6: *BGL1*, *BGL2*, *TrEGI*, *TrEGII*, *NcCBHI*, *TrCBHII*; (D) YLC4, Lane 1, 2, 3, 4, 5, 6: *BGL1*, *BGL2*, *TrEGI*, *TrEGII*, *NcCBHI*, *4UASTrCBHII*; (E) YLC5, Lane 1, 2, 3, 4, 5, 6: *BGL1*, *BGL2*, *TrEGI*, *TrEGII*, *4UASNcCBHI*, *TrCBHII*; (F) YLC6, Lane 1, 2, 3, 4, 5, 6: *BGL1*, *BGL2*, *TrEGI*, *TrEGII*, *4UASNcCBHI*, *4UASTrCBHII*.

Table S1 The sequences of the oligonucleotide primers used for PCR verification of γ 1-transformants

Primer names	Sequence (5'-3')
VBGL1A	TTGACCCAGTAGCGGACCCAA
VBGL1B	GCCGACATTAGCCCTAACAGCAT
VBGL2A	GGTTGGCGGCGCATTGT
VBGL2B	TGTCGTCCACTCGGCTTTCATC
VEGIA	CACTTGCCGTTAAGGGCGTAGGGT
VEGIB	CTGGCTGTTGTCGTTCCAAATGCTG
VEGIIA	CTTGCCGTTAAGGGCGTAGGG
VEGIIB	CCATCGAGCATAATTGTGGATGTCG
VCBHIA	TTTGCTTTGTGGTTGGGACTTTAGC
VCBHIB	GGTTCGAGATCCGATGTTAGTGGAGTA
VCBHIIA	TTTGCTTTGTGGTTGGGACTTTAGCC
VCBHIIIB	AGGCGTTGGACCAGCCGTA
V4UASCBHIA	CGCCGCAAGGAATGGTGCA
V4UASCBHIB	GGTTCGAGATCCGATGTTAGTGGAGTA
V4UASCBHIIA	CGCCGCAAGGAATGGTGCA
V4UASCBHIIIB	CCGATCCGACTGGAGGTACTCTGGTAG