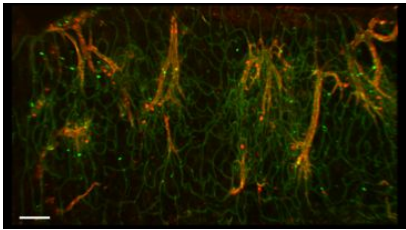


Supplemental Figure 7: DARC expression in whole mount adipose tissue

CD31 DARC



Surface area for CD31

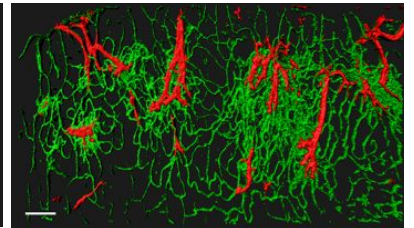
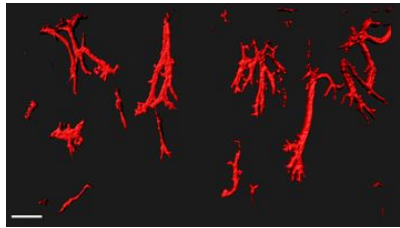
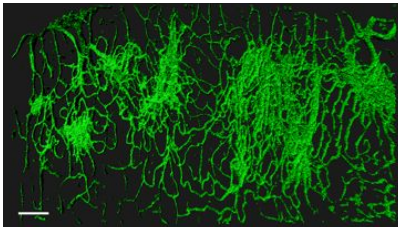
3161698.05 μm^2

Surface area for DARC

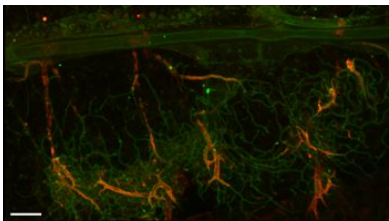
464211.96 μm^2

Merge of surface areas

14.68% overlap



CD31 DARC



Surface area for CD31

2187833.23 μm^2

Surface area for DARC

301388.47 μm^2

Merge of surface areas

13.78% overlap

