

Supplementary data

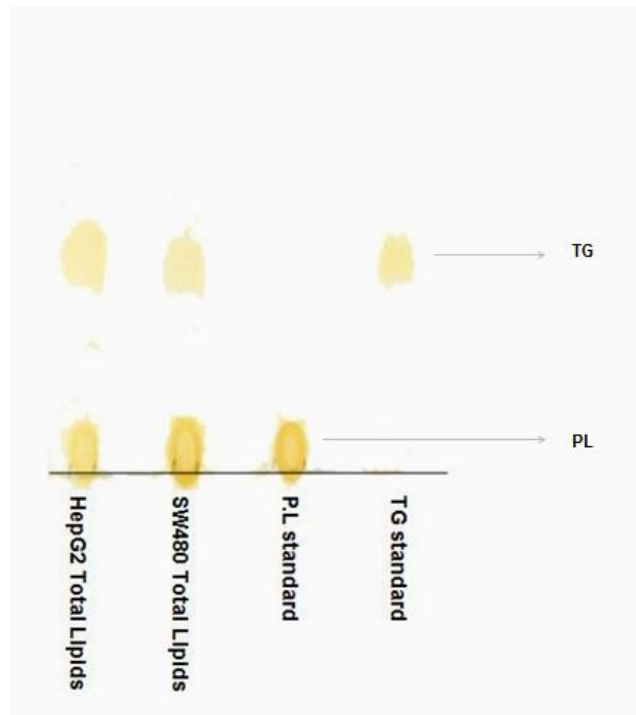
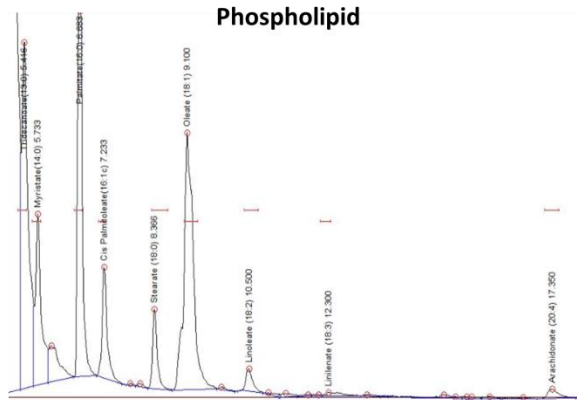
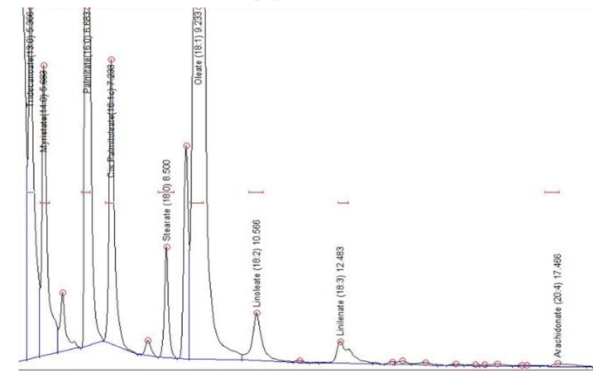


Fig. S1. Fractionation of phospholipid (PL) and triglycerides (TG) from HepG2 and SW480 total lipid extracts by thin layer chromatography technique. TLC plates were placed in a TLC tank containing a mobile phase (hexane/diethyl ether/acetic acid) for 90 minutes and targeted fractions were visualized by iodine crystals. Identified fractions are labeled according to the standards rate of flow.

HepG2



Triglyceride



SW480

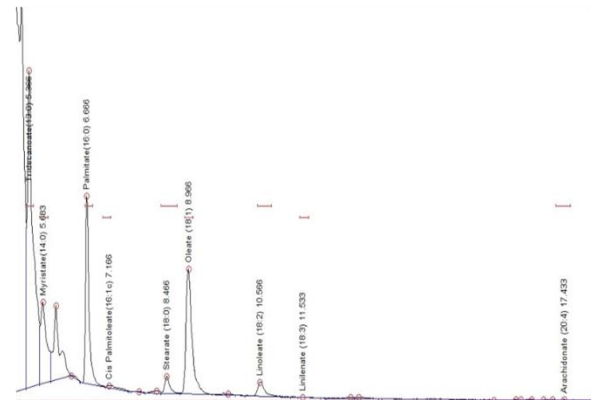
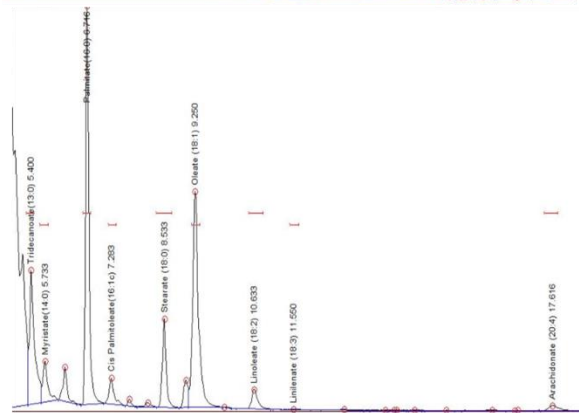


Fig. S2. Representative gas-liquid chromatograms of fatty acids from phospholipid (PL) and triglyceride (TG) fractions from HepG2 and SW480 cells.

HepG2 Cell line

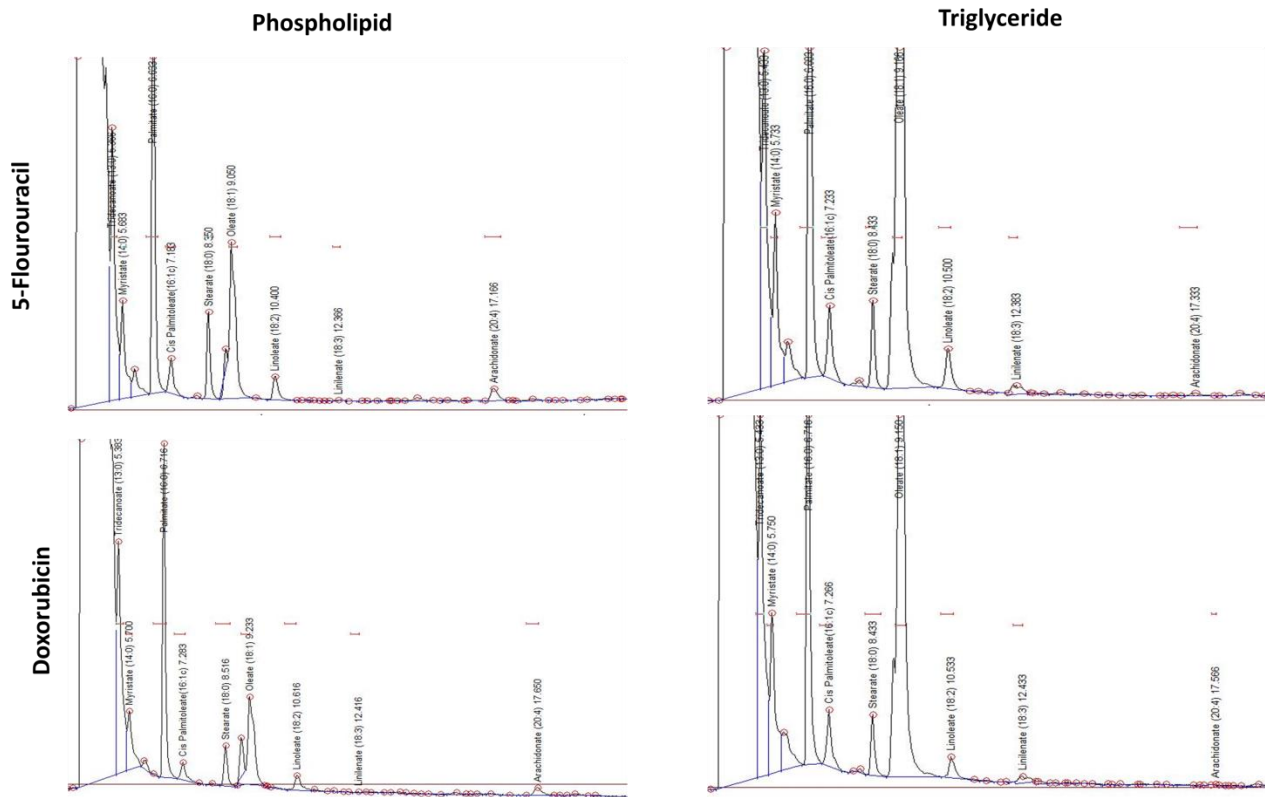


Fig. S3. Representative gas-liquid chromatograms of fatty acids from phospholipid (PL) and triglyceride (TG) fractions from 5-FU and/or dox treated HepG2 cells.

SW480 Cell line

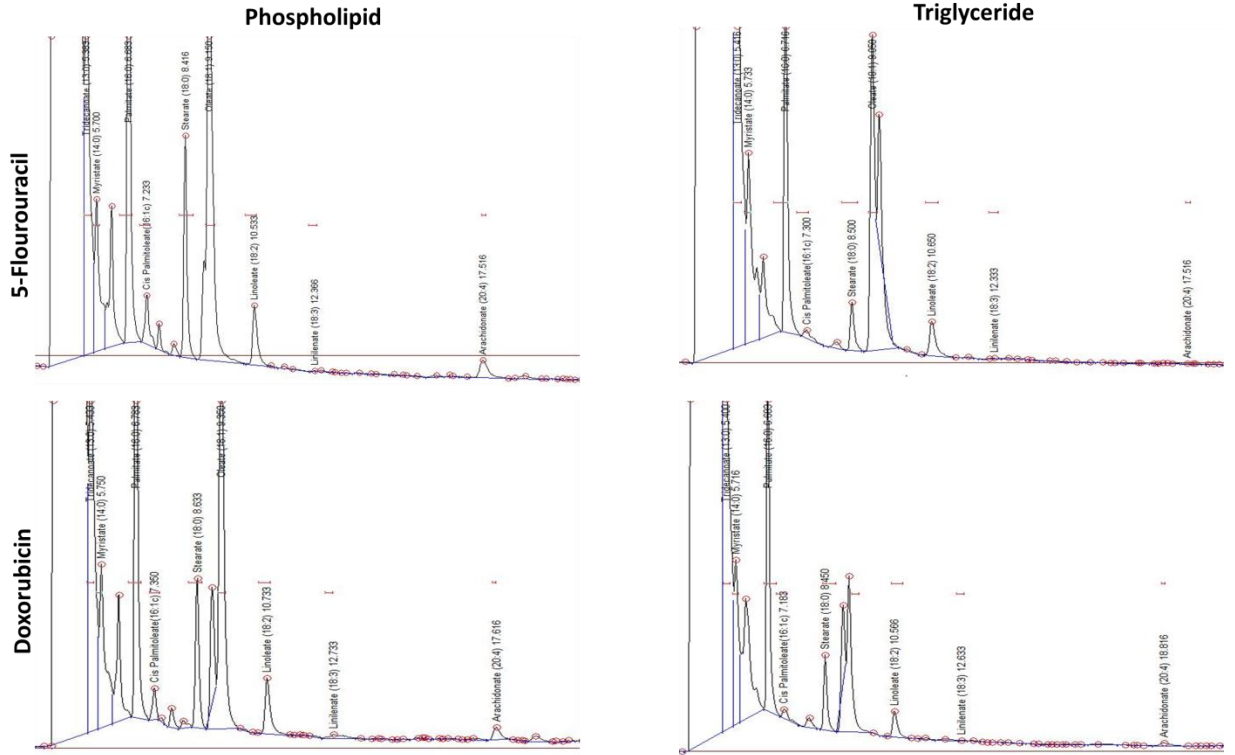


Fig. S4. Representative gas-liquid chromatograms of fatty acids from phospholipid (PL) and triglyceride (TG) fractions from 5-FU and/or dox treated SW480 cells.